



1

FR - CHARGER

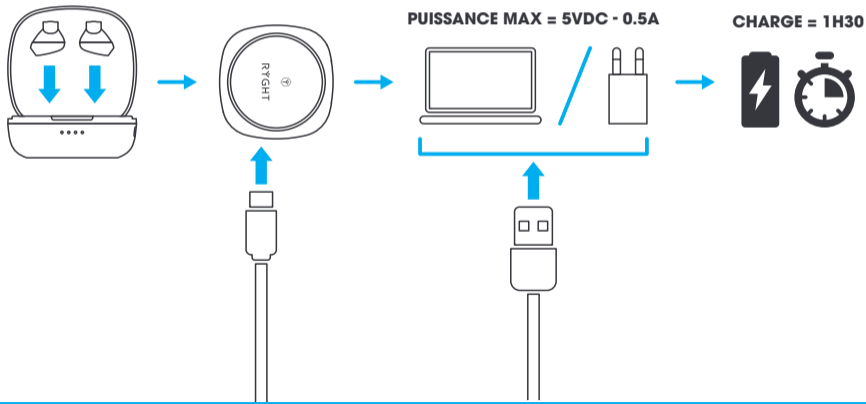
EN - CHARGE

DE - AUFLADEN

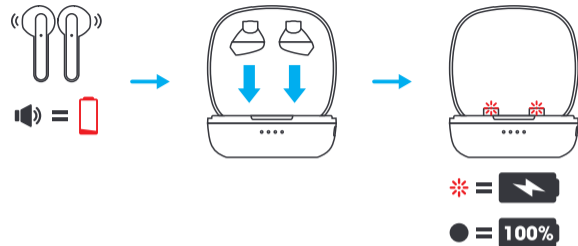
NL - OPLADEN

ES - CARGAR

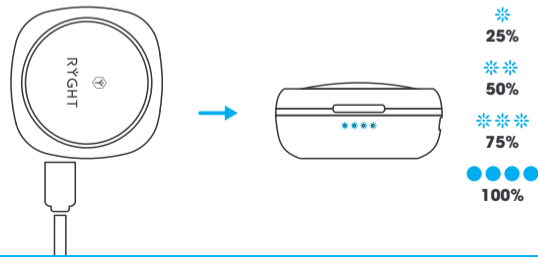
IT - CARICARE



EARPHONES



CASE





2

FR - APPAIRER

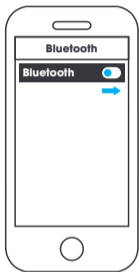
EN - PAIR

DE - PAAREN

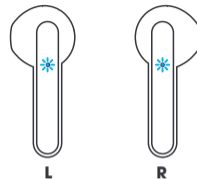
NL - KOPPELEN

ES - SINCRONIZAR

IT - ACCOPPIARE



LED STATUS



L

R



ON



OFF



PAIRING



CONNECTED



DISCONNECTED



RESET



3

FR - UTILISER

EN - USE

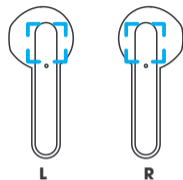
DE - BENUTZEN

NL - GEBRUIKEN

ES - UTILIZAR

IT - USARE

CONTROLS



TOUCH ZONE



TOUCH 1x



TOUCH 2x



TOUCH 3x



TOUCH 2sec



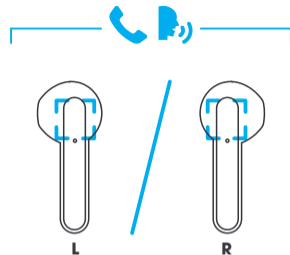
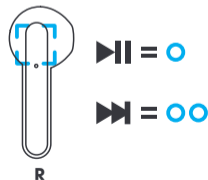
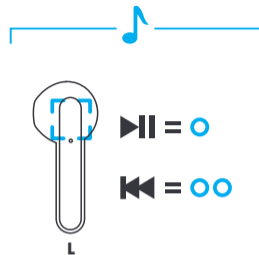
TOUCH 3sec



TOUCH 5sec



TOUCH 8sec



= ○



= ○○



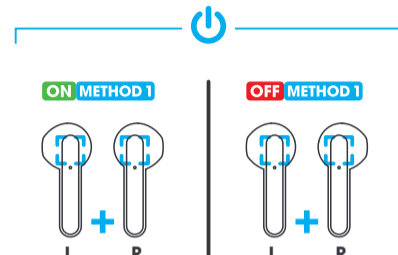
= ○



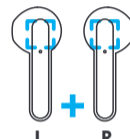
= ○○○



= ○○

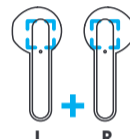


ON METHOD 1



ON = ○
3sec

OFF METHOD 1

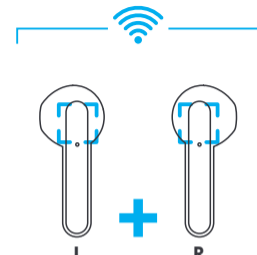


OFF = ○
5sec

ON METHOD 2



OFF METHOD 2



NOUVEL APPAIRAGE
NEW PAIRING
NEUE VERBINDUNG
NIEUWE KOPPELING
NUEVA CONEXIÓN
NUOVA CONNESSIONE



4

FR - ATTENTION

EN - WARNING

DE - WARNUNG

NL - WAARSCHUWING

ES - ADVERTENCIA

IT - AVERTENZA

FR. Écouter de la musique avec un volume élevé peut gravement nuire à l'audition.

EN. Listening at high volume levels for long periods can lead to permanent hearing defects.

DE. Das Hören mit Kopfhörern bei sehr hohen Lautstärken, vor allem über längere Zeit, kann Gehörschäden verursachen.

NL. Het langdurig luisteren naar muziek op hoog volume kan schade aan het gehoor veroorzaken.

ES. Un volumen excesivo durante un periodo prolongado de tiempo puede causar años auditivos permanentes.

IT. L'esposizione prolungata a un volume elevato può provocare danni permanenti all'udito.



5

FR - RÉINITIALISER

EN - RESET

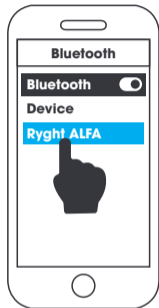
DE - ZURÜCKSETZEN

NL - RESETTEN

ES - REINICIAR

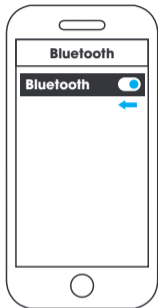
IT - RESET

1



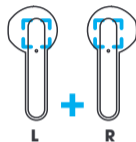
SUPPRIMER
DELETE
BESEITIGEN
VERWIJDEREN
SUPRIMIR
RIMUOVERE

2



DÉSACTIVER
DISABLE
DEAKTIVIEREN
UITSCHAKELEN
DESACTIVAR
DISATTIVARE

3



1 **OFF** = 5sec

2 = 8sec

RÉINITIALISATION
FACTORY RESET
RÜCKSTELLUNG
RESET-FUNCTIE
REESTABLECIMIENTO
REIMPOSTAZIONE

4

