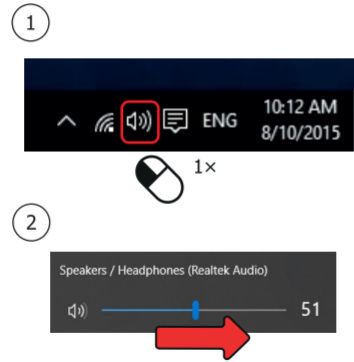


4. Installation - Windows 10/8/7

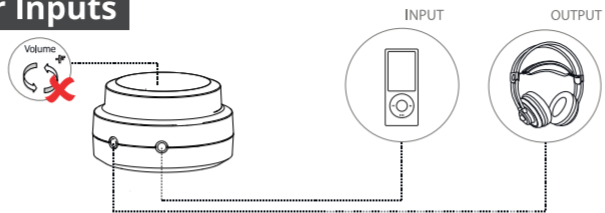
Windows 8



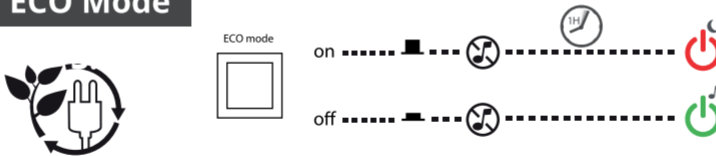
Windows 10/7/Vista



5. Other Inputs



6. ECO Mode



Frequently asked questions

<http://www.trust.com/23290/faq>

Trust

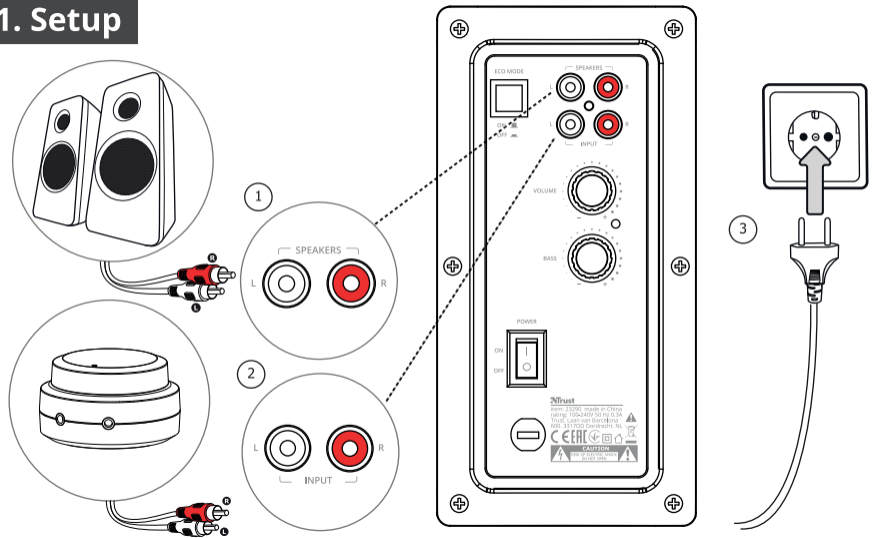
120 WATT
2.1 speaker set

TYTAN

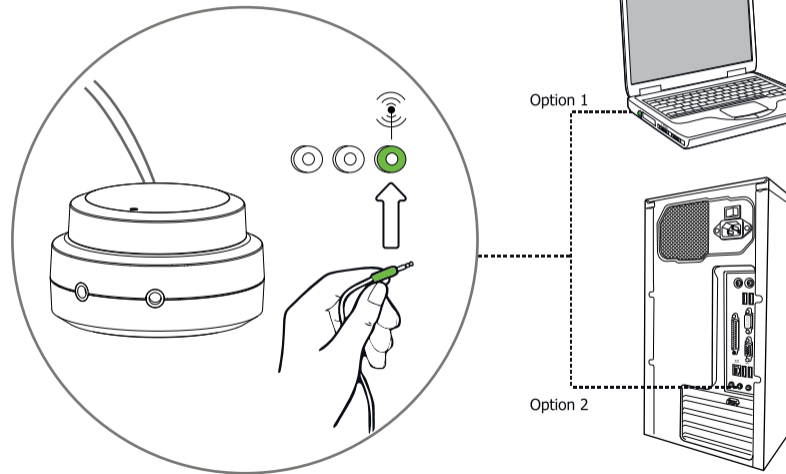


User Guide
Bedienungsanleitung
Mode d'emploi
Gebruikershandleiding
Manuale utente
Manual del usuario
Guia do utilizador
Brukerveiledning
Bruksanvisning
Käyttöopas
Brugsvejledning
Instrukcja obsługi
Návod k použití
Návod na používanie
Használati útmutató
Manual de utilizare
Ръководство за потребителя
Εγχειρίδιο χρήσης
Kullanici kılavuzu
Руководство пользователя
Uporabniški priročnik
Korisnički priručnik
Guia do usuário
Посібник користувача

1. Setup



2. Connecting Audio



3. Controls

