

Oral-B®

PRO powered by BRAUN

6000-7000

with wireless SmartGuide





如需了解更多产品信息,
请登陆我们的网站: www.oralb.com,
www.braun.com

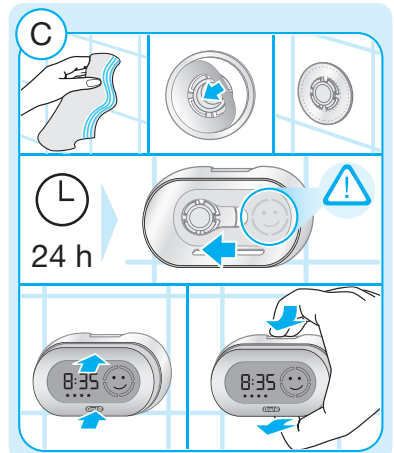
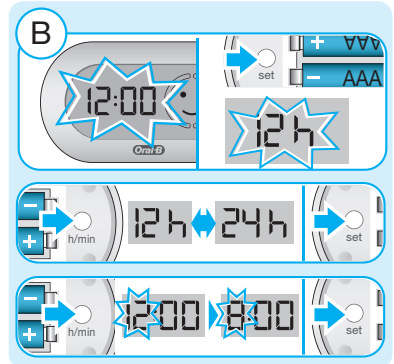
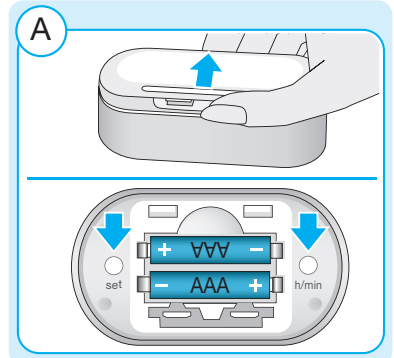
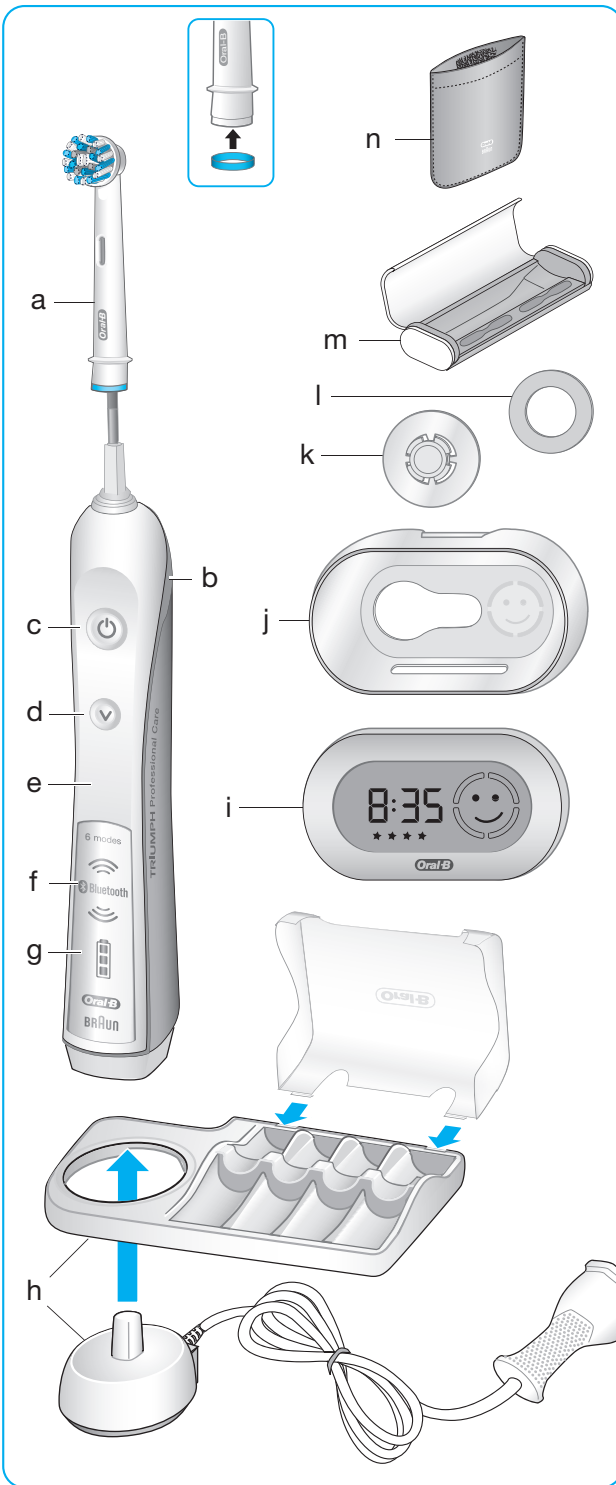
Internet:

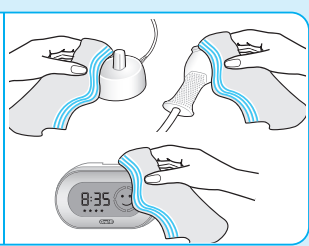
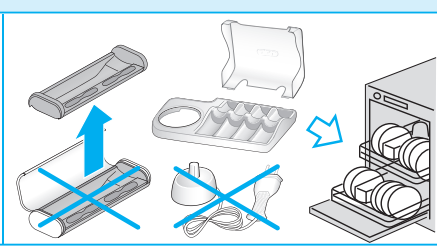
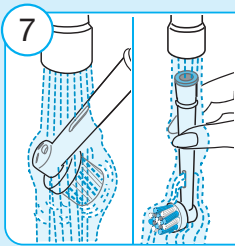
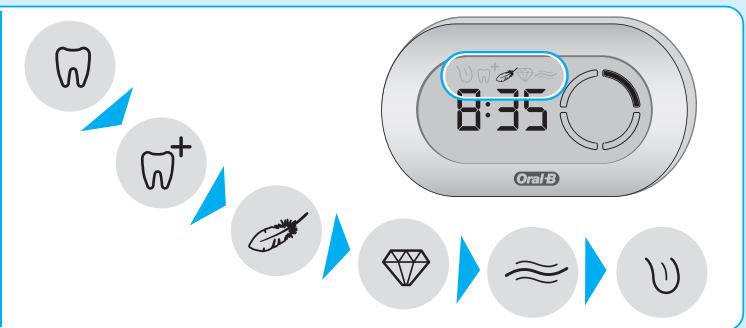
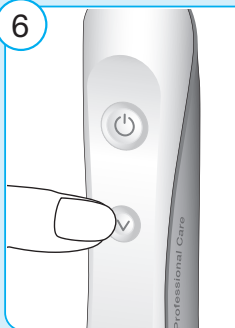
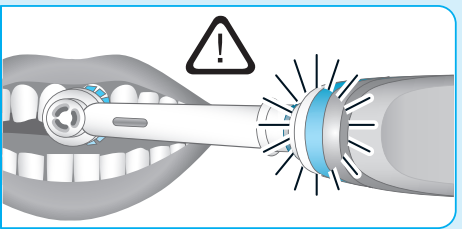
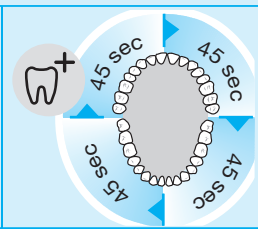
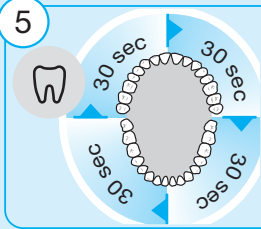
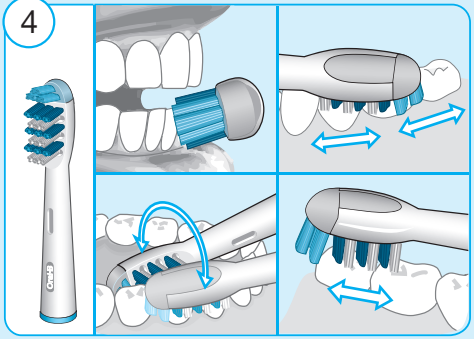
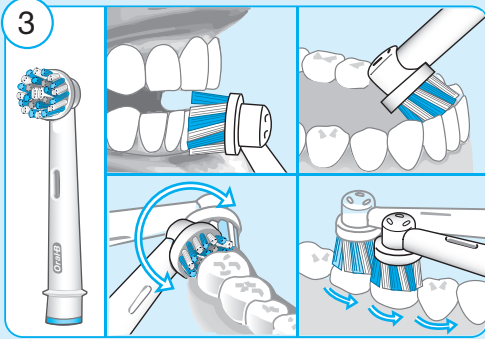
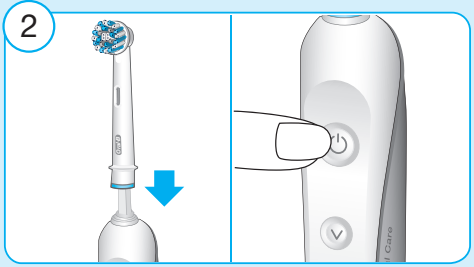
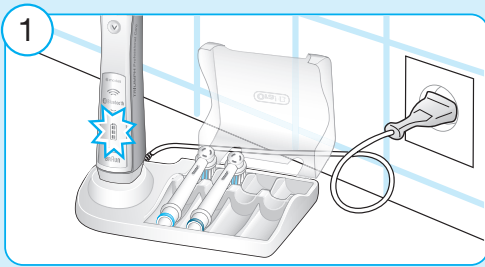
www.oralb.com
www.braun.com
www.service.braun.com

原产国: 德国
广州宝洁有限公司
地址: 广州市经济技术开发区滨河路一号
邮政编码: 510730
咨询热线: 8008201357 (供固定电话拨打);
4008201357 (供手机拨打)

Made in Germany
P&G Guangzhou Ltd.
Address: NO.1 Binhe Road
Economic Development Zone, Guangzhou
Post Code: 510730
Hotline: 8008201357 (for telephone),
4008201357 (for mobile phone)

充电器型号 3757
刷柄型号 3764c
包装盒型号 3742
Charger Type 3757
Handle Type 3764c
Display Type 3742





中文

欢迎您使用欧乐B电动牙刷！

在使用本牙刷之前，请仔细阅读本用户手册，并妥善保管以供日后查阅。

重要注意事项

- 定期检查电源线有否损坏。如有损坏请将充电单元送至博朗服务中心。已损坏或发生故障的电器不可继续使用。不要改动和自行维修本产品。这些行为可能会导致火灾、触电或造成其他伤害。
- 本产品不适合3岁以下儿童使用。3-14岁儿童和由于身体、感官和精神原因行动不便者及缺乏使用牙刷经验和知识的人群需要在有人监护下安全使用本产品，并了解可能存在的危险。
- 清洗和维修工作不要交给儿童。
- 不要让儿童玩耍本产品。
- 本产品只能用于本手册说明用途。不要使用厂商没有推荐使用的零配件。
- 每三个月更换一次牙刷刷头。如果刷头损坏或者出现松动，请及时更换。

睿智向导电池

- 如果电池没有电或者长时间不用，可能会出现漏液，处理漏液电池时应该避免皮肤接触。
- 不要让儿童接触电池，也不得吞咽电池，如果已经吞咽，请马上就医。
- 当电池没有电时，请立即拆除，同时更换所有电池。新旧电池、不同品牌或者型号电池不得混用。废旧电池请勿拆卸、充电或者丢弃在火中。

警告

- 如果产品摔落，即使没有看见损伤也要在下次使用前更换牙刷头。
- 不要将插座摆放在水里或其他液体中，或储藏在容易跌落浴缸或洗漱台的地方。不要接触已经掉入水中的插座，而要立即拔出插头。
- 除非拆除电池，不要拆解本产品，取出废旧电池时要小心，不要导致正(+)负(-)极短路。
- 拔出插头时请注意握住插头而不是电源线。不要用带水的手触碰插头，以免触电。

- 如果您正在接受口腔治疗，请在使用前咨询您的口腔专家。
- 本牙刷是个人护理设备，不是专门针对牙科诊所或者机构设计，不要给多个病人使用。

重要信息

- 您的欧乐B 6000-7000电动牙刷使用无线交互式网络连接显示(i)，和/或连接你的智能电话(请查阅《将牙刷连接到智能电话》部分细节)。
- 为避免电磁干扰或兼容性冲突，在受限环境(如飞机或医院特别标示区域)中使用前请关闭无线电传输。
- 关闭无线电的方法是，同时按下开/关键(c)和模式键(d)，持续3秒，直到无线电传输显示(f)关闭。按照同样操作程序可以重新启动无线电传输。
- 若您正在佩戴起搏器，请确保运行中的电动牙刷远离起搏器6英寸(15厘米)以上。当您怀疑起搏器受到干扰时，请关闭电动牙刷的无线电信号。

产品描述

- a 牙刷头
- b 压力感应指示灯(红色)/可视计时灯(绿色)
- c 开/关按键
- d 刷牙模式按键
- e 牙刷手柄
- f 无线电传输显示屏(采用蓝牙无线技术)
- g 充电指示灯
- h 充电单元(含充电器及带保护罩刷头盒)
- i 睿智向导
- j 睿智向导底座
- k 壁挂底座
- l 连接胶带
- m 旅行盒(取决于选购型号)
- n 旅行充电器袋(取决于选购型号)

规格

电压规格请参考充电器底座信息。

连接电源和充电

您的电动牙刷使用的是防水手柄，不导电，可以在浴室安全使用。

- 将充电器插入电源插座。充电电压有关标准请参阅充电器底部的标识。
- 当蓝色指示灯闪烁时，表示电动牙刷正在充电(见第3页图1)。当牙刷充满电时，指示灯关闭。牙刷充满一次电需要24小时，电量可供常规刷牙使用10天时间(每天两次，每次2分钟)。注意：完全放电后，蓝色指示灯不会立即开始闪烁，可能需要约10-15分钟才会开始闪烁。
- 当充电电池电量过低时，按牙刷开/关键后，蓝色低电量显示灯(Q)会闪烁几秒。如果充电电池电量为空，牙刷机会停止运转，电量显示灯显示橙色。充电40分钟即可继续使用2分钟。
- 日常使用时，手柄应该放在充电底座上，让牙刷保持充沛电力。电池不会出现过度充电。
- 电池维护：为了保持充电电池的最佳性能，在正常使用情况下，应该至少每半年拔下充电器，将牙刷手柄完全放电一次。

睿智向导调整

睿智向导(i)开始处于演示状态。打开牙刷后面的电池盒盖(第2页图A)，按《set》或者《h/min》键退出演示状态。显示屏闪烁显示《12:00》时，您可以调整时间。

注意：睿智向导初次使用之前如果显示空白(没有激活演示模式/没有安装电池)，在继续操作之前需要更换电池，我们提供更换电池。

时间设置

按住《set》按钮直到显示《12h》。快速按《h/min》键，可以切换选择《12h》或《24h》时间制式，按《set》键确认您的选择。当小时数字开始闪烁，按《h/min》键直到显示正确小时数字并按《set》确认。照此操作可以设置两位数分钟时间(第2页图B)。


睿智向导图标


(取决于选购型号)


显示图标 含义


 日常清洁模式


 深度清洁模式


 柔和模式


 美白模式

 按摩模式


 舌苔清洁模式

 用力过大，减小刷牙力度。

 《刷牙区间转换提示》
相关区间闪烁提示移动到下一刷牙部位。

 您已完成牙医推荐2分钟刷牙时间(采用深度清洁模式，刷牙时间为3分钟)。

★★★★★ 当刷牙完后，屏幕上会根据刷牙完成情况显示五角星奖励。

 睿智向导电池电量过低，请更换电池。

如何使用电动牙刷

刷牙技巧

打湿刷头挤上牙膏，您可以使用任何种类的牙膏。为免牙膏飞溅，请在启动电动牙刷先将刷头放置于口腔内(第3页图2)。顺序缓慢地移动刷头，使其在每颗牙齿表面停留数秒(第3页图3)。请从牙齿外侧开始，然后牙齿内侧，再到咀嚼面，均匀地清洗您口腔内四个刷牙区间。您还可以咨询您的牙科医生或口腔卫生专家获得适合您的刷牙技巧。

使用电动牙刷的前几天时，您的牙龈可能会有轻微的出血现象。通常，几天后此现象应会消失。若使用两周后仍持续有出血现象，请咨询您的牙科医生或口腔卫生专家。对于牙齿和牙龈敏感人群，欧乐B推荐您选择《柔和》模式(与可选欧乐B敏感刷头一起使用)。

计时器

您可以选择《2分钟计时》或者《专业计时》方式。《2分钟计时》设置会通过一声短音和绿色指示

灯(b)提示您牙医推荐的2分钟洗漱时间已到。《专业计时》设置每隔30秒(《深度清洁》模式为45秒)会通过一声短音和绿色指示灯(b),提示您到时间洗漱下一区间牙齿(第3页图5)。一声长音和绿色指示灯(b)表示到达专家推荐的2分钟洗漱时间(《深度清洁》模式为3分钟)。

即便牙刷手柄在洗漱过程中短时间暂停,计时器仍会记录保存之前的洗漱时间。若暂停时间超过30秒,或在暂停期间快速按下模式选择按键(d),计时器将重置。

个性化设置计时器

您的电动牙刷默认设置了《专业计时》计时模式。若您想个性化设置,请按刷牙模式键并持续3秒,直到睿智向导显示《:30》和《timer》。快速按下开/关按键切换到《2-Minute》计时模式,按模式选择按键确认。

压力感应器

若您对牙齿施加过度的压力时,红色压力感应灯(b)就会亮灯(第3页图5)。此外,当您在《日常清洁》模式或《深度清洁》模式洗漱时压力过度,刷牙模式就自动变为《柔和》模式,日常使用时,请定期适度按压刷头以检查压力感应器的运作。

注意:选择《舌苔清洁》模式,压力感应器处于关闭状态。

刷牙模式(取决于选购型号)

您的电动牙刷提供不同的刷牙模式:

- 《日常清洁》 日常刷牙标准模式
- 《深度清洁》 口腔清洁每区间刷牙时间延长至45秒(刷牙时间共3分钟)
- 《柔和》 轻柔彻底地清洁口腔敏感区域
- 《美白》 偶尔或者日常使用抛光
- 《按摩》 温柔按摩牙龈
- 《舌苔清洁》 偶尔或者日常使用清洁舌部

选择《舌苔清洁》模式,我们推荐使用柔软敏感型刷头EB17。清洁舌部可以使用牙膏,也可不使用牙膏。请小心全面清洁您舌部的每一个地方。推荐清洁时间是20秒,睿智向导会用笑脸提示洗漱完成。

您的电动牙刷启动后自动进入《日常清洁》模式,连续按刷牙模式按键(第3页图6),将转

换刷牙的模式。在任何刷牙模式下长按刷牙模式键,将返回《日常清洁模式》。当刷牙过程中牙刷被暂停时,牙刷会自动记录刷牙模式。当暂停超过30秒或者快速按模式键(d)刷牙模式将重置到日常清洁模式。

牙刷刷头

欧乐B为您提供各种不同的牙刷刷头,以配合您的牙刷手柄。我们的刷头可以精准清洁每颗牙齿。

欧乐B多角度清洁型牙刷头EB50



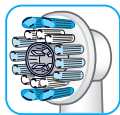
我们最先进的刷头。倾斜的刷毛可以精准清洁牙齿,强力清除牙菌斑。

欧乐B牙线效果型电动牙刷头EB25



配有微波脉冲刷毛,可以有效去除牙间部位突出的牙菌斑。

欧乐B专业美白型电动牙刷头EB18



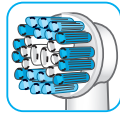
配有特殊抛光杯,可以很自然地美白您的牙齿。请注意,十二岁以下儿童不应使用欧乐B专业美白型刷头。

欧乐B柔软敏感型电动牙刷头EB17



配有超软刷毛结构,可以轻柔清洁牙齿和牙龈。

欧乐B精准清洁型电动牙刷头EB20



独有卷曲刷毛结构刷头可以包住每颗牙齿,同时深度清洁牙间缝隙。

所有电动牙刷头都配有浅蓝色显示[®]刷毛,帮助您检查是否需要更换刷头。随着每天刷牙两次,每次两分钟的彻底口腔清洁,半数刷毛会在大约3个月内由蓝色褪为白色,提醒您更换刷头。若在褪色前刷毛外张,这也许是您过度用力洗漱牙齿和牙龈所致。

我们不推荐使用矫正牙套人群使用欧乐B牙线效果型刷头或欧乐B三维美白型刷头。

同步您的电动牙刷

为了避免影响显示信息，在一个屋内配合一个睿智向导使用一把以上欧乐B电动牙刷，需要将刷柄分配到各自的睿智向导。

一个睿智向导最多可以同步两支电动牙刷。

要设置，请按住电池舱内的《h/min》键至少3秒，睿智向导显示《L---》。启动您的电动牙刷，自动开始同步程序。当显示《L-1-》时，设置完成。关闭电动牙刷。要设置第二支电动牙刷，打开第二支电动牙刷直到屏幕显示《L-2-》。当完成第二支电动牙刷同步设置后，屏幕显示《Full》。按《h/min》或《set》键退出同步模式，否则智能同步将在30秒后自动退出。

将牙刷连接到智能电话

您可以从应用商店™或者google play™免费下载欧乐B™应用。欧乐B™应用让您有机会更有效利用刷牙时间，制作刷牙进度图，定制你的刷牙设置(欲知使用软件的更多好处，请查阅欧乐B™应用使用说明)。

- 打开欧乐B™应用。此应用可以和智能向导(i)同时使用。
- 欧乐B™应用会指导您完成蓝牙连接配对。请注意：若您手机的蓝牙功能无法启用(请参考您的智能手机的使用手册)，欧乐B™应用的部分功能将无法使用。
- 一旦从充电器(h)拿起牙刷开始使用，或者按下(c)/(d)当中任何一个按钮，牙刷自动连接到欧乐B™应用。如果连接没有成功，轻轻按下牙刷手柄上的模式按钮(d)，等待建立连接。
- 应用更多说明会显示在你的智能电话上。
- 和牙刷手柄配合使用时，智能电话要放在牙刷附近。确保智能电话安全放置在干燥的地方。

注意：要连接你的蓝牙牙刷，你的智能电话必须支持蓝牙4.0(或者更高)版本。

本产品清洗建议

刷牙后，打开手柄将牙刷头放置于流水下彻底清洁。关掉电源并移除牙刷头。分别清洁手柄和刷头；在重新安装前需将它们擦干。清洗前应拆卸充电装置。牙刷头和保护罩可用水清洗。充电器及智能向导都只能用湿布清洁。清洁旅行盒(m)时，取出里面的部件，

里面的部件可用水清洗，旅行盒外壳只能用湿布清洁(第3页图7)。

重新装配旅行盒之前，必须确保所有部件完全干燥。牙刷和刷头在放入旅行盒之前要保持干燥状态。

注意：旅行盒上的污渍要马上清除。旅行盒应存放在清洁干燥的地方。

壁挂底座

如果您想将睿智向导固定于墙壁、镜面或其他平面上时，请使用连接胶带(l)和壁挂底座(k)。粘贴前确保所选的平面清洁干爽。先将连接胶带粘贴到壁挂底座的平整一侧，然后用力将壁挂底座粘贴到墙上。请勿在24小时内将睿智向导底座(j)放入壁挂底座。睿智向导应放入睿智向导底座内(第2页图C)，连接胶带不能应用于防尘胶带表面。

如有更改，恕不另行通知。

环保提示

本产品包含电池和/或可回收电子废物。为了保护环境，请不要在产品使用期期满后，将本产品与生活垃圾一起处理，请将其送至您本国提供的电子废物回收点。



保修

我们为产品提供2年的有限保修，保修期从购买之日开始计算。在保修期内对于材料或生产过程所引起的各种瑕疵，我们会免费处理，视情况予以修理或更换整个产品。本保修适用于全球范围内所有博朗公司及其指定供应商出售的博朗产品。

上述保修不包含以下内容：由于使用不当造成的产品损坏；正常使用引起的产品老化、磨损，尤其是刷头，以及对产品的价值或使用功能不产生影响的一些瑕疵。如果产品经过未经授权的人员修理，或产品使用了非博朗公司的零件，保修期立即终止。

本产品配有蓝牙智能连接无线电组件，无法和某种型号智能电话建立连接不属于设备保修范围，除非是本产品蓝牙智能连接无线电组件损坏造成。

蓝牙设备保修由各自制造商而不是博朗公司提供。博朗公司不能影响设备制造商或者向其推荐做出任何改变，因此，博朗公司无法对我们蓝牙系统兼容的蓝牙设备数量承担任何责任。为了确保欧乐B系统可靠运行，博朗公司保留在不事先通知的情况下，对设备功能、接口和菜单结构的系统实现做出必要技术修改或者变更的权利。

注意：旅行盒上的污渍要马上清除。旅行盒应存放在清洁干燥的地方。

若在保修期内需要维修，请在保修期内将本产品和销售单据一同交给授权的欧乐B 博朗售后服务中心。

本保证不影响您受法律保护的权利。

蓝牙无线电组件重要信息

尽管蓝牙设备所有说明功能都支持，欧乐B也无法确保连接100%的可靠性，100%符合操作功能。操作性能和连接可靠性直接取决于每个蓝牙设备、软件版本以及承载这些蓝牙设备的操作系统，以及蓝牙设备采用的公司安全规定。欧乐B坚持并严格实施蓝牙标准，确保蓝牙设备可以和欧乐B牙刷通信并正常运行。但是，如果设备制造商未能实施这一标准，蓝牙兼容性和功能会受到影响，用户会遇到操作或者与功能相关的问题。请注意，蓝牙设备上的软件可能严重影响兼容性和操作。

更换刷头保修

如果充电牙刷手柄损坏是由于使用了非欧乐B品牌更换刷头，欧乐B的保修终止。

欧乐B不推荐使用非欧乐B品牌更换刷头，原因是：

- 欧乐B无法控制非欧乐B品牌更换刷头的质量，因此，我们无法保证非欧乐B品牌更换刷头的清洁效果，也无法确保刷头与充电手柄之间通信和最初购买时完全一致。
- 欧乐B不能确保非欧乐B品牌更换刷头完全匹配欧乐B牙刷。
- 欧乐B不能预测非欧乐B品牌更换刷头对牙刷手柄磨损的长期影响。

所有欧乐B品牌更换刷头都有欧乐B品牌标识，符合欧乐B的高质量标准。欧乐B没有使用其它品牌名称销售更换刷头或者手柄零部件。

故障排除

故障现象	可能原因	解决办法
牙刷		
欧乐B牙刷手柄无法使用睿智向导	<ol style="list-style-type: none">1、和睿智向导同步失败2、无线电传输没有激活；无线电传输显示(f)没有打开3、牙刷手柄没有安装无线电传输模块	<ol style="list-style-type: none">1、按《同步你的牙刷》说明步骤重新同步牙刷2、同时按下开关机按钮(C)和模式按钮(d)持续3秒钟，直到无线电传输显示(f)打开，激活无线电传输3、安装有无线电传输模块的欧乐B牙刷手柄才能使用睿智向导
<ol style="list-style-type: none">1、每30秒(深度清洁模式为45秒)出现一声短音/绿灯闪烁2、2分钟后(深度清洁模式为3分钟)出现一声短音/绿灯闪烁	<ol style="list-style-type: none">1、激活了《专业记时》模式2、激活了《2分钟记时》模式	<ol style="list-style-type: none">1、设置你的计时器为《2分钟记时》模式，请遵照《个性化设置计时器》步骤设置2、设置你的计时器为《专业记时》模式(每30秒出现一声短音/绿灯闪烁)，请遵照《个性化设置计时器》步骤设置
牙龈轻度出血	<ol style="list-style-type: none">1、前几天使用可能会出现2、牙刷刷头有问题3、刷牙模式选择不正确	<ol style="list-style-type: none">1、使用几天后出血会停止，如果两周后还在流血，请咨询你的牙医或者口腔保健专家2、试试欧乐B《柔和》刷头3、切换到《柔和》模式试试
牙刷刷头		
欧乐B牙刷刷头无法安装到牙刷手柄上	欧乐B牙刷刷头和你的牙刷手柄不兼容	适合你的欧乐B牙刷手柄的欧乐B牙刷刷头不支持《Pulsonic》、《VitalityPulsonic》、《SonicComplete》、《CrossAction Power》
应用软件		
欧乐B应用软件无法(恰当)操作牙刷	<ol style="list-style-type: none">1、欧乐B应用没有打开2、智能手机蓝牙没有激活3、牙刷无线电传输没有激活；无线电传输显示(f)没有打开4、蓝牙连接断开5、你的智能手机不支持蓝牙4.0(或者更高)版本	<ol style="list-style-type: none">1、打开欧乐B应用软件2、根据手机用户手册激活你的智能电话蓝牙功能3、同时按下开关机按钮(C)和模式按钮(d)持续3秒钟，直到无线电传输显示(f)打开，激活无线电传输4、短暂按下模式选择按钮(d)重新连接。和牙刷手柄配合使用时，智能电话要放在牙刷手柄附近。5、为了连接牙刷手柄，你的智能手机必须支持蓝牙4.0(或者更高)版本

English

Welcome to Oral-B!

Before operating this toothbrush, please read these instructions and save this manual for future reference.

IMPORTANT

- Periodically check the cord for damage. If cord is damaged, take the charging unit to an Oral-B Service Centre. A damaged or non-functioning unit should no longer be used. Do not modify or repair the product. This may cause fire, electric shock or injury.
- This product is not intended for use by children under age three. Children from 3 to 14 years and persons with reduced physical, sensory or mental capabilities or lack of experience and knowledge can use the toothbrush, if they have been given supervision or instruction concerning use of the appliance in a safe way and understand the hazards involved.
- Cleaning and maintenance shall not be performed by children.
- Children shall not play with the appliance.
- Use this product only for its intended use as described in this manual. Do not use attachments which are not recommended by the manufacturer.
- Replace brush (head) every 3 months or sooner if brush head becomes loose due to damage.

SmartGuide batteries

- Batteries may leak if empty or not used for a long time. Avoid skin contact whilst handling leaking batteries.
- Keep away from children. Do not swallow. If swallowed, seek medical advice at once.
- Remove fully discharged batteries immediately. Replace all batteries at the same time. Do not mix used and

new batteries, different brands or types. Do not disassemble, recharge or dispose of in fire.

WARNING

- If the product is dropped, the brush head should be replaced before the next use even if no damage is visible.
- Do not place the charger in water or liquid or store where it can fall or be pulled into a tub or sink. Do not reach for it when fallen into water. Unplug immediately.
- Do not disassemble the product except when disposing of the battery. When taking out the battery for disposal of the unit, use caution not to short the positive (+) and negative (-) terminals.
- When unplugging, always hold the power plug instead of the cord. Do not touch the power plug with wet hands. This can cause an electric shock.
- If you are undergoing treatment for any oral care condition, consult your dental professional prior to use.
- This toothbrush is a personal care device and is not intended for use on multiple patients in a dental practice or institution.

Important Information

- Your Oral-B 6000-7000 can be used with an interactive wireless display (i) and/or with your smart phone (find details under «Connecting your toothbrush to your Smart Phone»).
- To avoid electromagnetic interference and/or compatibility conflicts, deactivate the radio transmission of your toothbrush handle (e) before using it in restricted surroundings, such as aircrafts or specially marked areas in hospitals.
- Deactivate radio transmission by simultaneously pressing the on/off (c) and mode button (d) for 3 seconds until the radio transmission display (f) goes off. Follow the same procedure to reactivate transmission again.
- Persons with pacemakers should always keep the toothbrush more than six inches (15 centimeters) from the pacemaker while turned on. Anytime you suspect interference is taking place, deactivate the radio transmission of your toothbrush.

Description

- a Brush head
- b Pressure sensor light (red)/visual timer light (green)
- c On/off button
- d Brushing mode button

- e Handle
- f Radio transmission display (with *Bluetooth*® wireless technology)
- g Charge level display
- h Charging unit (basic charger and brush head compartment with protective cover)
- i SmartGuide
- j SmartGuide holder
- k Wall mount
- l Adhesive ring
- m Travel case (depending on model)
- n Travel charger pouch (depending on model)

Connecting and charging

Your toothbrush has a waterproof handle, is electrically safe and designed for use in the bathroom.

- Plug the charger into an electrical outlet. For voltage specifications refer to the bottom of the charging unit.
- The flashing blue lights indicate that the toothbrush is charging (picture 1, page 4); once it is fully charged, the lights turn off. A full charge can take up to 24 hours and enables up to 10 days of regular brushing (twice a day, 2 minutes).
Note: After deep discharge, the blue lights might not flash immediately; it can take up to 10–15 minutes.
- If the rechargeable battery is low a blue light is flashing on the charge level display (g) for some seconds when turning your toothbrush on/off. If the rechargeable battery is empty the motor will stop and an orange light is flashing on the charge level display; it will need a 40-minute charge before you can use it for a 2-minute brushing.
- For everyday use, the handle can be stored on the charging unit to maintain it at full power. Overcharging is impossible.
- Battery maintenance: To maintain the maximum capacity of the rechargeable battery, unplug the charging unit and fully discharge the handle with regular use at least every 6 months.

SmartGuide adjustments

The SmartGuide (i) comes with a demonstration mode. Deactivate this mode by removing the compartment cover in the back (picture A, page 3) and push the «set» or «h/min» button. A flashing «12:00» indicates that you can now adjust the clock time.






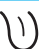





Note: If the SmartGuide display is blank before first use (no active demonstration mode/no batteries inserted) the batteries will need to be replaced/inserted before continuing. Batteries are supplied.

Clock Time

Press and hold the «set» button until «12h» is displayed. By briefly pressing the «h/min» button, you can toggle between «12h» or «24h» daytime format. Push «set» to confirm your choice. Then the hour digit starts flashing. Press the «h/min» button until the right hour appears and confirm with «set». Proceed same way to set both minute digits (picture B, page 3).

SmartGuide Icons

(depending on model)

Displayed Icon	Meaning
	«Daily Clean» mode
	«Deep Clean» mode
	«Sensitive» mode
	«Whitening» mode
	«Gum Care» mode
	«Tongue Cleaning» mode
	Too much pressure is applied. Reduce the brushing force.
	«Quadrant circle» Move to the next quadrant of your mouth when the relevant segment flashes.
	You reached the dentist recommended 2-minute brushing time (3-minute brushing time within the Deep Clean mode).
	After use your brushing time will be rewarded with stars.
 bAtte	SmartGuide batteries are low. Change batteries of the SmartGuide.

Using your toothbrush

Brushing technique

Wet brush head and apply any kind of toothpaste. To avoid splashing, guide the brush head to your teeth before switching on the appliance (picture 2, page 4). Guide the brush head slowly from tooth to tooth, spending a few seconds on each tooth surface (picture 3, page 4). Start brushing the outsides, then the insides and finally the chewing surfaces. Brush all four quadrants of your mouth equally. You may also consult your dentist or dental hygienist about the right technique for you.

In the first days of using any electric toothbrush, your gums may bleed slightly. In general, bleeding should stop after a few days. Should it persist after 2 weeks, please consult your dentist or dental hygienist. If you have sensitive teeth and/or gums, Oral-B recommends using the «Sensitive» mode (optional in combination with an Oral-B «Sensitive» brush head).

Timer

You can choose between «Professional» or «2-Minute» timer.

The «2-Minute» timer signals with a short stuttering sound and a green light (b) that the dentist recommended 2-minute brushing time has been reached.

The «Professional» timer signals with a short stuttering sound and a green light at 30-second intervals to move to the next quadrant of your mouth (45 seconds intervals within «Deep Clean» mode) (picture 5, page 4). A long stuttering sound and a green light indicate the end of the professionally recommended 2-minute brushing time (3-minute brushing time within «Deep Clean» mode).

The timer memorizes the elapsed brushing time, even when the handle is briefly switched off during brushing. The timer resets if pausing longer than 30 seconds or briefly pressing the mode button (d) during pause.

Personalizing the timer

Your toothbrush comes with the «Professional» timer activated. To change this, press and hold the brushing mode button for 3 seconds until the SmartGuide shows «:30» and «timer». Briefly press the on/off button to switch to the «2-Minute» timer. Push the mode button to confirm.

Pressure sensor

If you put excessive pressure on your teeth, the red pressure sensor light (b) will light up (picture 5, page 4). Additionally, when brushing in «Daily Clean» or «Deep Clean» mode, the brushing mode will change to the «Sensitive» mode. Periodically

check the operation of the pressure sensor by pressing moderately on the brush head during use. Note: In «Tongue Cleaning» mode the pressure sensor is turned off.

Brushing modes (depending on model)

Your toothbrush offers different brushing modes:

- «Daily Clean» – Standard mode for daily mouth cleaning
- «Deep Clean» – Mouth cleaning with extended brushing time of 45 seconds per quadrant (3 minute total brushing time)
- «Sensitive» – Gentle, yet thorough cleaning for sensitive areas
- «Whitening» – Polishing for occasional or everyday use
- «Gum Care» – Gentle massage of gums
- «Tongue Cleaning» – Tongue cleaning for occasional or everyday use

When operating the «Tongue Cleaning» mode, we recommend using the «Sensitive» brush head. You can brush your tongue either with or without toothpaste. Brush the whole area of your tongue systematically in gentle movements.

The recommended brushing time is 20 seconds; the SmartGuide will indicate completion with a smiley face.

Your toothbrush automatically starts in the «Daily Clean» mode. To switch to the other modes, successively press the mode button (picture 6, page 4). To return from any mode back to the «Daily Clean» mode, press and hold the mode button. The brushing mode is memorised even when the handle is briefly switched off during brushing. When pausing longer than 30 seconds or briefly pressing the mode button (d) during pause the brushing mode resets to the «Daily Clean» mode.

Brush heads

Oral-B offers you a variety of different Oral-B brush heads that fit your Oral-B toothbrush handle.

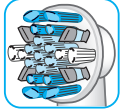
Our **oscillating-rotating brush heads** can be used for tooth-by-tooth precision cleaning.

Oral-B CrossAction brush head



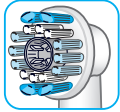
Our most advanced brush head. Angled bristles for a precise clean. Lifts and powers away plaque.

Oral-B FlossAction



features micropulse bristles that allow for an outstanding plaque removal in the interdental areas.

Oral-B 3D White



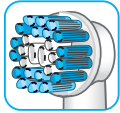
features a special polishing cup to naturally whiten your teeth. Please note that children under 12 years old should not use the Oral-B ProWhite brush head.

Oral-B Sensitive



features an extra soft bristle structure that is gentle on teeth and gums.

Oral-B Precision Clean



cups each tooth with a curved bristle trim and reaches deep between teeth at the same time.

Oral-B brush heads feature light blue INDICATOR® bristles to help you monitor brush head replacement need. With thorough brushing, twice a day for two minutes, the blue color will fade halfway approximately within 3 months, indicating the need to exchange your brush head. If the bristles splay before the color recedes, you may exert too much pressure on teeth and gums.

We do not recommend using the Oral-B «FlossAction» or Oral-B «3D White» brush head with braces.

Synchronizing your toothbrush

To avoid interference of display messages when using more than one Oral-B toothbrush with radio transmission and SmartGuide in the same household, you need to assign the handles to their respective SmartGuide.

You can synchronize a maximum of 2 handles with one SmartGuide. To do so, push the «h/min» button in the battery compartment for at least 3 seconds. The SmartGuide shows «L-1-». Turn on your handle to start the synchronization process. It is finished when «L-1-» is displayed. Turn off the handle. To assign a second handle to the same SmartGuide turn on the other handle until «L-2-» is displayed.

After having synchronized the second handle, «Full» will be displayed. Exit the synchronization mode by pressing the «h/min» or «set» button, otherwise it will end automatically after 30 seconds.

Connecting your toothbrush to your Smart Phone

Download the Oral-B™ app for free from App Store^(SM) or Google Play™. The Oral-B™ app gives you the opportunity to use your time more efficiently, chart your brushing progress and customize your toothbrush settings (for more benefits see the Oral-B™ app instructions).

- Start the Oral-B™ app. You can use the app and your SmartGuide (i) at the same time.
- The Oral-B™ app will guide you through the *Bluetooth* pairing procedure.
Note: Oral-B™ app functionality is limited if *Bluetooth* is deactivated on your phone (for directions please refer to your smart phone's user manual).
- Once you start using your toothbrush by lifting it off the plugged-in charger (h) or pressing any button (c)/(d), it automatically connects to the Oral-B™ app. If no connection has been established, briefly press the mode button (d) on your toothbrush handle and wait for a connection.
- Any further app instructions will be displayed on your smart phone.
- Keep your smart phone in close proximity when using it with your toothbrush handle. Make sure the smart phone is safely positioned in a dry place.

Note: Your smart phone must support *Bluetooth* 4.0 (or higher) in order to connect to your toothbrush handle.

Cleaning recommendations

After brushing, rinse your brush head under running water with the handle switched on. Switch off and remove the brush head. Clean handle and brush head separately; wipe them dry before reassembling. Disassemble the charging unit before cleaning. Brush head compartment and protective cover are dishwasher-safe. Both basic charger and SmartGuide should be cleaned with a damp cloth only. The removable inner part of the travel case (m) is dishwasher-safe. The outer case should only be wiped clean with a damp cloth (picture 7, page 4). Make sure that travel case parts are completely dry before reassembling and toothbrush/brush heads are dry before storing in the travel case.

Note: Clean stains on the travel case surface immediately. Store travel case in a clean and dry place.

Wall mount

Use the adhesive ring (l) with the wall mount (k) if you prefer to mount the SmartGuide on a wall, mirror or other surface. Make sure the chosen surface is clean and dry before adhering. Stick the adhesive ring on the even side of the wall mount and press it firmly to the wall. Wait 24h before sliding the SmartGuide holder (j) into the fixed wall mount. Place the SmartGuide into its holder (picture C, page 3). The adhesive ring will not work on dirt-repellent surfaces.

Environmental Notice

Product contains batteries and/or recyclable electric waste. For environment protection do not dispose in household waste, but for recycling take to electric waste collection points provided in your country.



Guarantee

We grant 2 years guarantee on the product commencing on the date of purchase. Within the guarantee period we will eliminate, free of charge, any defects in the appliance resulting from faults in materials or workmanship, either by repairing or replacing the complete appliance as we may choose.

This guarantee extends to every country where this appliance is supplied by Braun or its appointed distributor. This guarantee does not cover: damage due to improper use, normal wear or use, especially regarding the brush heads, as well as defects that have a negligible effect on the value or operation of the appliance.

The guarantee becomes void if repairs are undertaken by unauthorised persons and if original Braun parts are not used. This appliance is equipped with a *Bluetooth* Smart approved radio module. Failure to establish a *Bluetooth* Smart connection to specific smart phones is not covered under the device guarantee, unless the *Bluetooth* radio module of this appliance is damaged.

The *Bluetooth* devices are warranted by their own manufacturers and not by Oral-B. Oral-B does not influence or make any recommendations to device manufacturers, and therefore Oral-B does not assume any responsibility for the number of compatible devices with our *Bluetooth* systems.

Oral-B reserves the right, without any prior notice, to make any technical modifications or changes to system implementation of device features, interface, and menu structure changes that are deemed necessary to ensure that Oral-B systems function reliably.

To obtain service within the guarantee period, hand in or send the complete appliance with your sales receipt to an authorised Oral-B Braun Customer Service Centre.

This guarantee in no way affects your rights under statutory law.

Important information on *Bluetooth*® radio module

Although all indicated functions on the *Bluetooth* device are supported, Oral-B does not ensure 100% reliability in connection, and feature operation consistency. Operation performance and connection reliability are direct consequences of each individual *Bluetooth* device, software version as well as the operating system of those *Bluetooth* devices and company security regulations implemented on the device. Oral-B adheres to and strictly implements the *Bluetooth* standard by which *Bluetooth* devices can communicate and function in Oral-B toothbrushes. However, if device manufacturers fail to implement this standard, *Bluetooth* compatibility and features will be further compromised and the user may experience functional and feature-related issues. Please note that the software on the *Bluetooth* device can significantly affect compatibility and operation.

Warranty replacement brush heads

Oral-B warranty will be voided if electric rechargeable handle damage is found to be attributed to the use of non-Oral-B replacement brush heads.

Oral-B does not recommend the use of non Oral-B replacement brush heads.

- Oral-B has no control over the quality of non-Oral-B replacement brush heads. Therefore, we cannot ensure the cleaning performance of non-Oral-B replacement brush heads, as communicated with the electric rechargeable handle at time of initial purchase.
- Oral-B cannot ensure a good fit of non-Oral-B replacement brush heads.
- Oral-B cannot predict the long-term effect of non-Oral-B replacement brush heads on handle wear.

All Oral-B replacement brush heads carry the Oral-B logo and meet Oral-B's high quality standards. Oral-B does not sell replacement brush heads or handle parts under any other brand name.

Trouble Shooting

Problem	Possible reason	Remedy
TOOTHBRUSH		
Oral-B handle does not operate with SmartGuide	<ol style="list-style-type: none"> 1. Synchronizing with SmartGuide failed 2. Radio transmission is deactivated; radio transmission display (f) is turned off. 3. Handle has no radio transmission installed 	<ol style="list-style-type: none"> 1. Synchronize your toothbrush(es) (again). Follow steps under «Synchronizing your Toothbrush» 2.«Activate the radio transmission by simultaneously pressing the on/off (c) and mode button (d) for 3 seconds until the radio transmission display (f) turns on. 3. Oral-B handle with radio transmission installed can operate with SmartGuide only.
<ol style="list-style-type: none"> 1. Short stuttering sounds/flashing green light every 30 seconds (45 seconds in Deep Clean mode) 2. Stuttering sound/ flashing green light only after 2 minutes (3 minutes in Deep Clean mode) 	<ol style="list-style-type: none"> 1. «Professional timer» activated 2. «2-Minute timer» activated 	<ol style="list-style-type: none"> 1. Set your timer to 2-Minute timer; follow steps under «Personalizing the timer» 2. Set your timer to Professional timer (stuttering sounds/flashing green light every 30 seconds); follow steps under «Personalizing the timer»
Gums bleed slightly	<ol style="list-style-type: none"> 1. May happen in first days of usage 2. Brush head 3. Brushing mode 	<ol style="list-style-type: none"> 1. Bleeding should stop after a few days. Should it persist after 2 weeks, please consult your dentist or dental hygienist. 2. Try using the Oral-B «Sensitive» brush head. 3. Try using the «Sensitive» mode
BRUSH HEADS		
Oral-B brush head does not fit Oral-B handle	Oral-B brush head not compatible with your handle	Oral-B brush heads that fit your Oral-B handle do not fit «Pulsonic», «VitalitySonic», «Sonic Complete», «CrossAction Power»
APP		
Toothbrush does not operate (properly) with Oral-B app	<ol style="list-style-type: none"> 1. Oral-B app is turned off. 2. <i>Bluetooth</i> is not activated on your smart phone. 3. Radio transmission is deactivated; radio transmission display (f) is turned off. 4. Connection to <i>Bluetooth</i> has been lost. 5. Your smart phone does not support <i>Bluetooth</i> 4.0 (or higher). 	<ol style="list-style-type: none"> 1. Turn on Oral-B app. 2. Activate <i>Bluetooth</i> on your smart phone; described in its user manual. 3. Activate the radio transmission by simultaneously pressing the on/off (c) and mode button (d) for 3 seconds until the radio transmission display (f) turns on. 4. Briefly press the mode button (d) to re-connect. 5. Keep your smart phone in close proximity when using it with the toothbrush handle. 5. Your smart phone must support <i>Bluetooth</i> 4.0 (or higher) in order to connect to your toothbrush handle.