

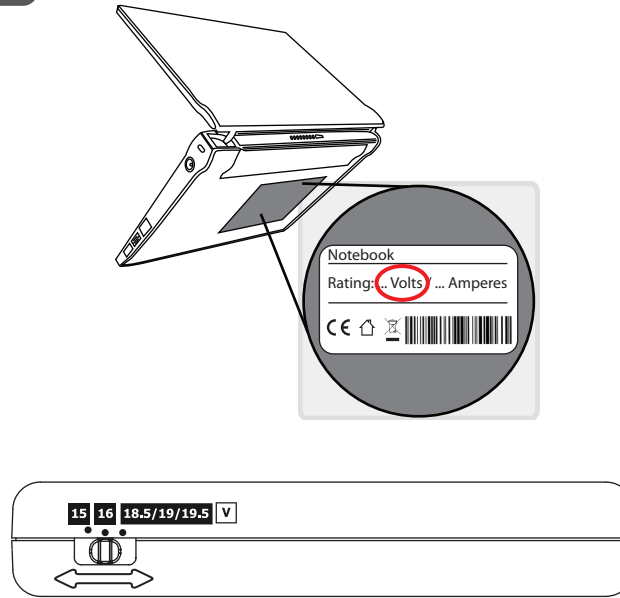


Quick Installation Guide

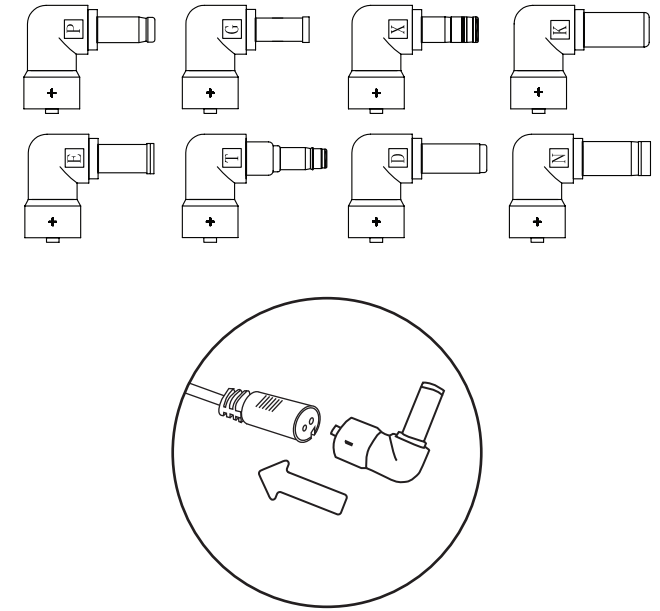
Slimline 70W Notebook Car Power Adapter

18065

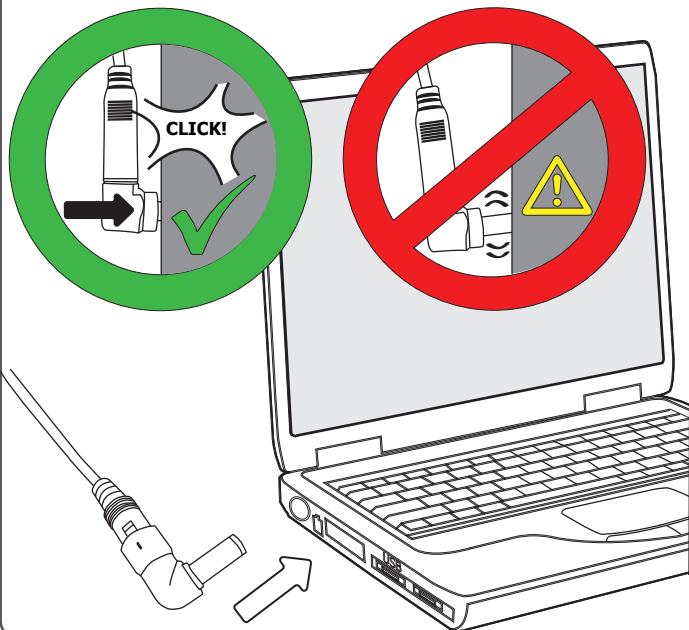
1 Set voltage



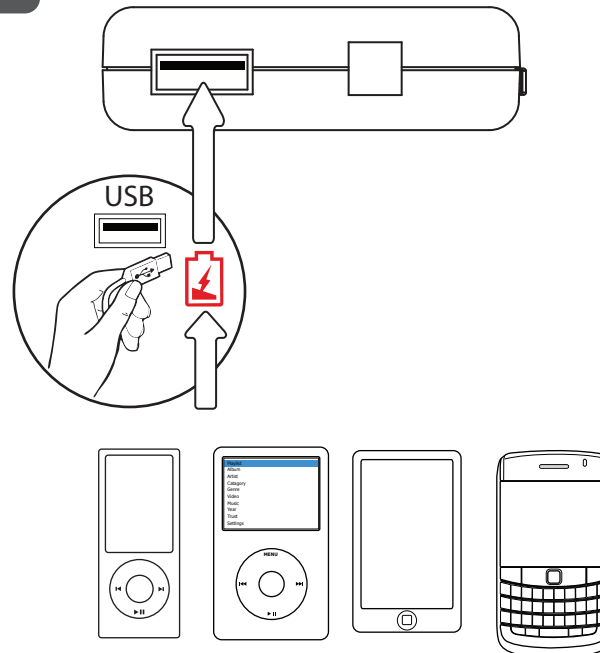
2 Select tip



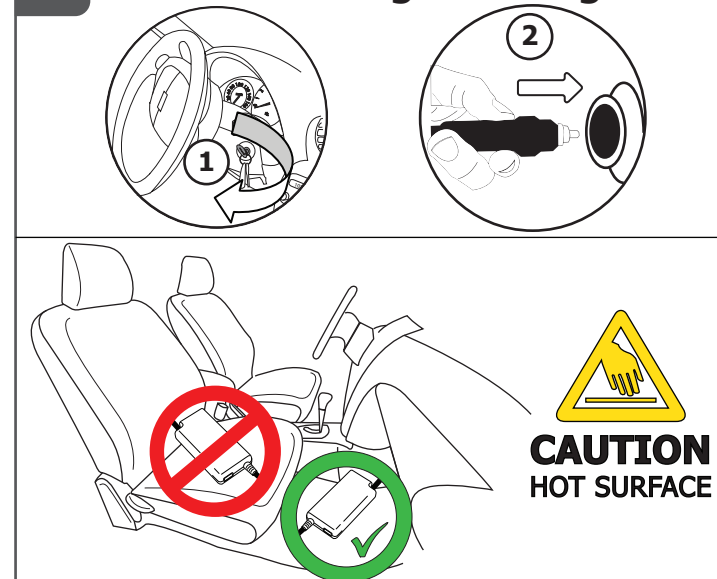
3 Connect to your laptop (70 Watts max.)



4

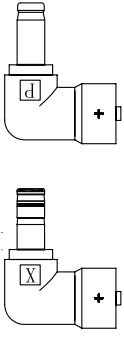


5 Connect to cigarette lighter

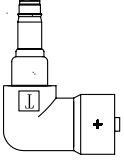


? **FAQ** → trust.com/18065/faq

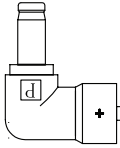
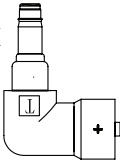
Acer:



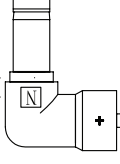
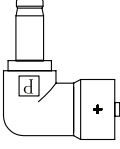
HP:



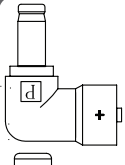
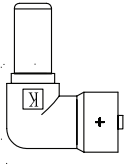
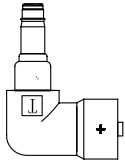
Asus:



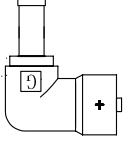
IBM, Lenovo,
Packard Bell:



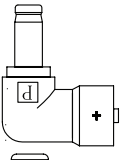
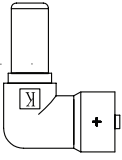
Compaq:



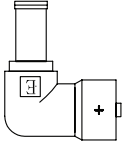
Samsung:



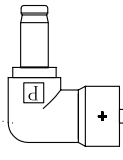
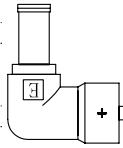
Dell:



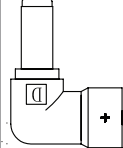
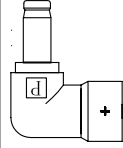
Sony:



Fujitsu-Siemens:



Toshiba:



EN

If the power adapter is not working, get a compatible connector for your notebook (for FREE) at trust.com/18065/freeconnector. For more detailed information and questions, refer to the included "Safety & Usage guide", or to the online FAQ at trust.com/18065/faq

FR

Si l'adaptateur ne fonctionne pas, obtenez un embout compatible avec votre ordinateur (gratuitement) sur trust.com/18065/freeconnector. Pour plus d'information et toutes questions, consultez le "Safety & Usage guide" inclus, ou les FAQ en ligne sur trust.com/18065/faq

DE

Wenn das Netzteil nicht funktioniert, können Sie einen geeigneten Stecker kostenlos über die Webseite nachbestellen: trust.com/18065/freeconnector. Für weitere Informationen und Fragen, nehmen Sie die beigelegte Anleitung und Sicherheitshinweise zu Rate oder schauen Sie mal auf der Webseite nach unter Unterstützung und Fragen (FAQ) trust.com/18065/faq