

QUICK START GUIDE

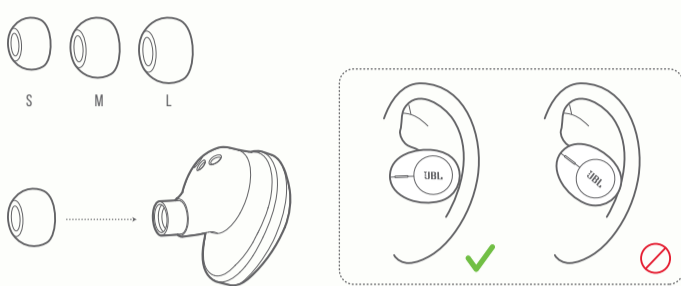
TUNE120TWS



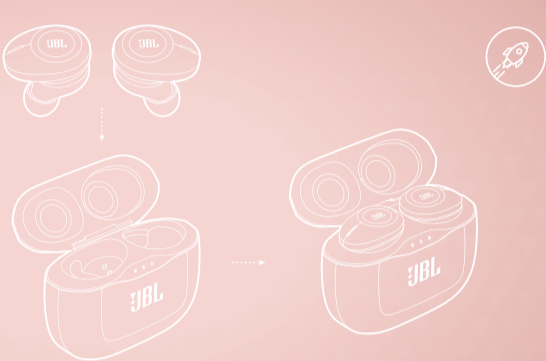
WHAT'S IN THE BOX



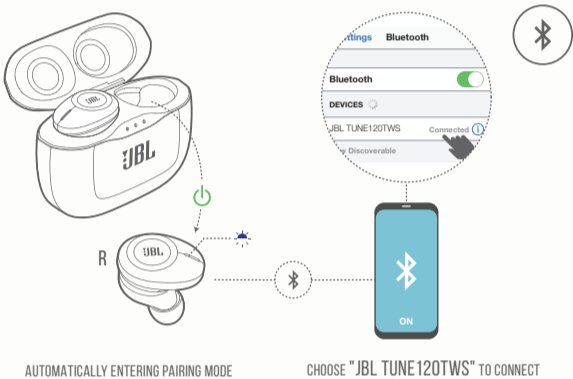
HOW TO WEAR



FIRST TIME USE



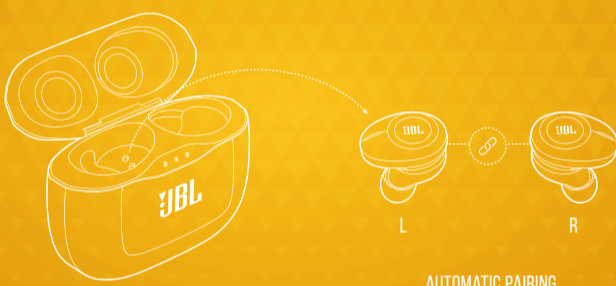
POWER ON & CONNECT



AUTOMATICALLY ENTERING PAIRING MODE

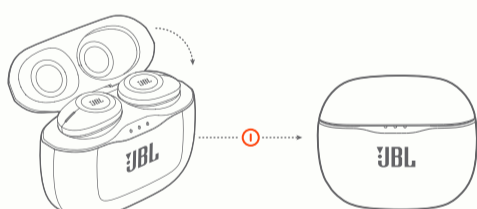
CHOOSE "JBL TUNE120TWS" TO CONNECT

PAIRING



AUTOMATIC PAIRING

POWER OFF

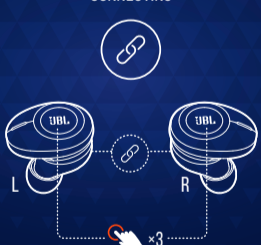


MANUAL CONTROLS

POWER ON & CONNECT TO DEVICE



CONNECTING



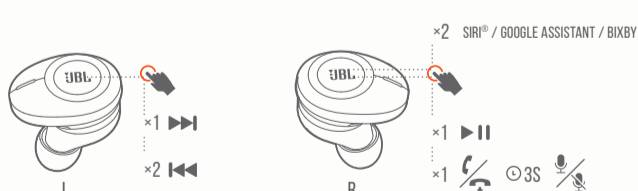
POWER ON



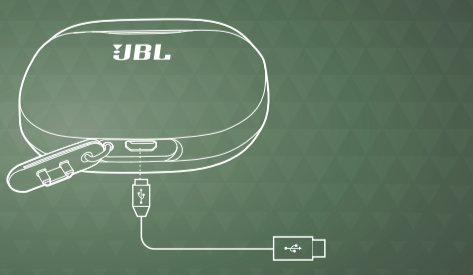
POWER OFF



BUTTON COMMAND



CHARGING



LED BEHAVIORS

