

USER MANUAL



Item 71183 Version 2.0
Visit www.trust.com
for the latest instructions

OUTDOOR CAMERA WITH NIGHTVISION

- DE** Das Handbuch in Deutsch finden Sie unter trust.com/71183
- FR** Le mode d'emploi français est disponible sur trust.com/71183
- NL** De Nederlandstalige handleiding is beschikbaar op trust.com/71183
- IT** Il manuale in italiano è disponibile alla pagina trust.com/71183
- ES** El manual en español se encuentra en trust.com/71183
- PT** O manual em português está disponível em trust.com/71183
- NO** Den norske brukerveiledningen er tilgjengelig via: www.trust.com/71183
- SV** Den svenska manualen finns på trust.com/71183
- FI** Suomenkielinen käyttöopas on saatavissa osoitteessa trust.com/71183
- DA** Den danske manual er tilgængelig på trust.com/71183
- PL** Instrukcja w języku polskim dostępna jest pod adresem trust.com/71183

- CS** Příručka v češtině je k dispozici na webu trust.com/71183
- SK** Slovenský návod je k dispozícii na trust.com/71183
- HU** A magyar nyelvű kézikönyv a trust.com/71183 weboldalon található
- RO** Manualul în limba Română este disponibil la adresa trust.com/71183
- BG** Ръководство на български език е на разположение на trust.com/71183
- EL** Το ελληνικό εγχειρίδιο είναι διαθέσιμο στη διεύθυνση trust.com/71183
- TR** Türkçe el kitabını trust.com/71183 adresinde bulabilirsiniz
- RU** Руководство по эксплуатации на русском языке доступно на сайте trust.com/71183
- SL** Priročnik v slovenščini je na voljo na spletni strani trust.com/71183
- HR** Priručnik na hrvatskom jeziku dostupan je na trust.com/71183
- UA** Українську версію посібника можна переглянути тут: trust.com/71183

AR

يتوفر هذا الكتيب باللغة العربية على trust.com/71183

Read the manual carefully. Failure to follow these instructions can be dangerous. Incorrect installation will void any warranty on this product.

COMPATIBILITY

The Outdoor IP Camera is compatible with the Trust Smart Home App.

WIRELESS RADIO SIGNAL

The WIFI signal passes through walls, windows and doors.
WIFI range: up to 15 m. (optimal conditions).

FUNCTIONALITY

Outdoor WiFi IP Camera with Night Vision to monitor your home and belongings, from any location.

LIFE SUPPORT

Never use Trust Smart Home products for life support systems or other applications where failures can have life-threatening consequences.

INTERFERENCE

Other Wifi networks, appliances and electronics emitting radio frequency can cause interference which can affect the operation of the IP Camera negatively. Place the Outdoor Camera as close to the Wi-Fi modem/router as possible for optimal performance.

REPAIRS

Do not try to repair this product yourself. The device contains no serviceable parts for the user.

WATER-RESISTANT

This product is IP65 water-resistant.

CLEANING

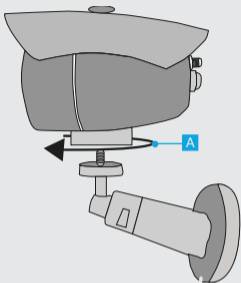
Clean this product with a dry cloth. Do not use harsh chemicals, cleaning solvents or strong detergents.

HANDLING

Do not drop the device, bump the device against something or shake it. Rough handling can damage internal circuit boards and fine mechanics.

ENVIRONMENT

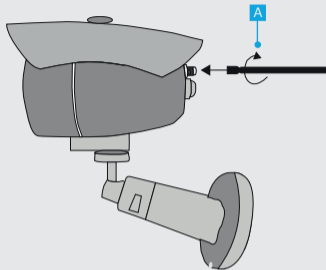
The product should not be exposed to extreme heat or cold. This can damage the circuit boards and shorten its life. The working temperature is -10 to 50 degrees Celsius.



1. Place mounting foot

⚠ Place the Outdoor Camera as close to the Wi-Fi modem/router as possible for optimal performance.

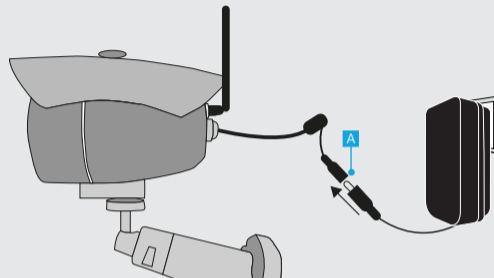
A Place the mounting foot by screwing it tightly on the camera.



2. Connect Wi-Fi antenna

Note: For installation purposes the camera will need to connect first using Wi-Fi. After installation the camera can be connected using a wired network connection

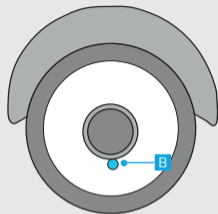
A Screw the included WiFi antenna tightly on the antenna connector.

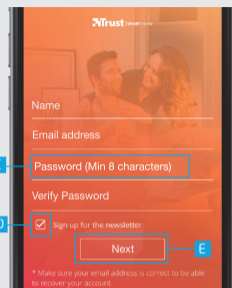
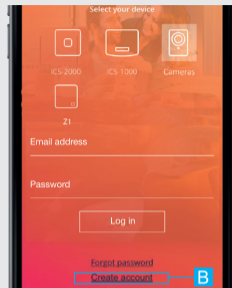
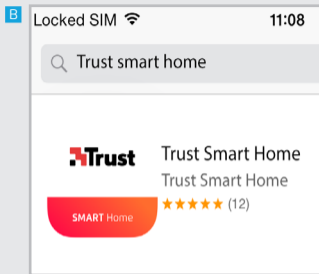
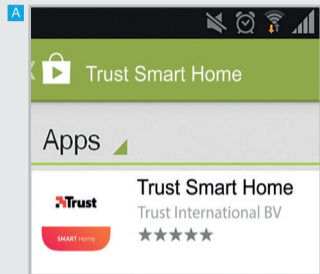


3. Connect the power adapter

A Connect the included power adapter to the camera connector and insert the plug of the power adapter into a wall socket. The first time the camera starts it can take up to a minute.

B When the camera is done starting up, the LED under the lens will be lit blue continuously.





4. Install the App

A Android

Open the Play Store, search for the Trust Smart Home app and install the app on your mobile device.

B iOS

Open the App store, search for the Trust Smart Home app and install the app on your mobile device.

5. Register IP Camera

Open the Trust Smart Home App on your mobile device.

⚠️ If you own a Trust Smart Home control station or bridge (ICS-2000 or Z1) press on the picture of your control station or bridge, login and go to step 6.1.

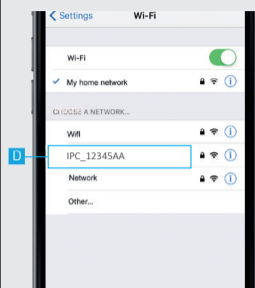
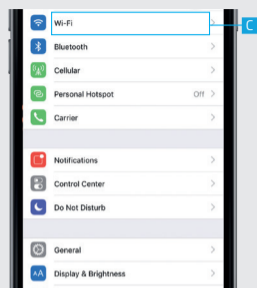
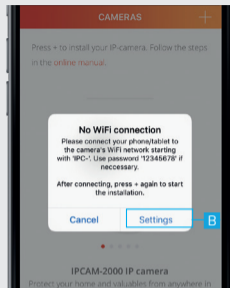
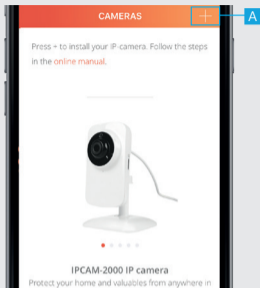
A Press on the picture of Cameras

B Press the CREATE ACCOUNT button.

C A screen appears to fill in your account information. Fill in your name, email address and a self created password.

D Choose if you want to receive a newsletter or not.

E When all information is filled in press the NEXT button.



6.1 Connect to camera using WiFi with iPhone/iPad (IOS)

⚠️ If you are logged in with a Trust Smart Home Control Station or Bridge first press on the IP Camera in the menubar on the bottom of the screen.

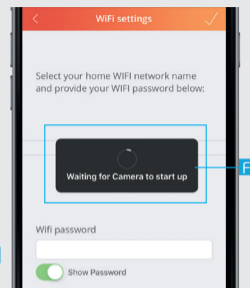
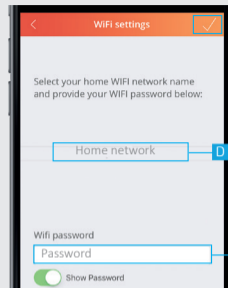
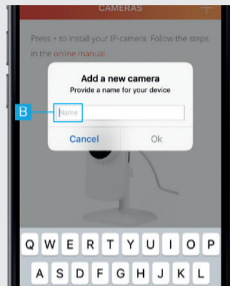
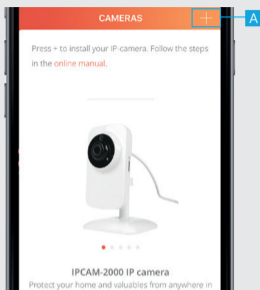
⚠️ Go to step 6.2 if you are using an Android device.

A Press the + button at the top of the screen to add a new camera

B A pop-up appears saying you must connect to the WiFi network of the camera. Press on the SETTINGS button.

C Go to your WiFi settings to connect to the network of the IP Camera

D Connect to the WiFi network of the camera by pressing on the IPC_XXXXX network. Wait until the device is connected with the WiFi network of the camera. (When asked the default password for the camera network is 12345678). After connecting to the network of the camera return to the Trust Smart Home App.



6.2 Add a camera

A Press the + button at the top of the screen to add a new camera

B Fill in a name for the camera and press OK.

C The App is now connecting to the camera and is loading a preview of the video stream. Press NEXT

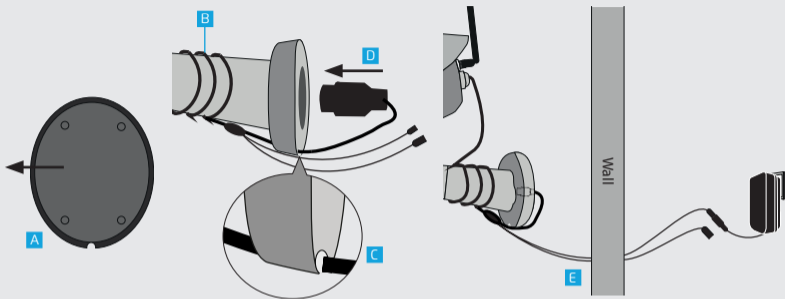
⚠ If no preview is shown of the video stream, try to take the following step:
 1. Check if the power adapter is connected to the IP Camera.
 For more troubleshooting go to trust.com/71183.

D Choose your Home WiFi network.

E Fill in the password for this network. Press the CONFIRM button when done.

F The camera is now connecting to your home WiFi network, reconnecting with the App and rebooting. This can take up to two minutes.

The camera has been added to the list. To open the video stream press on the name of the camera.



7 Wireless usage

i If the network cable is not used it can be stored inside the foot of the IP camera.

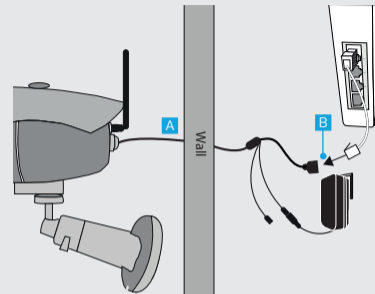
A Remove the foam from the bottom of the foot.

B Wrap the cable tightly around the foot of the camera.

C Guide the network cable through the notch in the foot so it will not be pinched between the wall and the camera when mounted.

D Store the network connector inside the foot and place the foam back. Mount the camera by following step 9.

E After mounting (See step 9) guide the reset and power cable through the hole in the wall inside the building like above picture. Then connect the power adapter to the power cable and insert the plug of the power adapter into a wall socket.

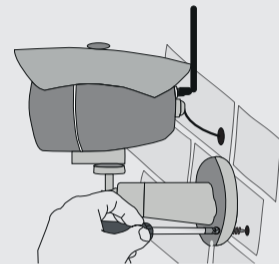


8 Wired usage

⚠ Before connecting the camera to your modem/router make sure the camera is connected with the App. (See step 6.1)

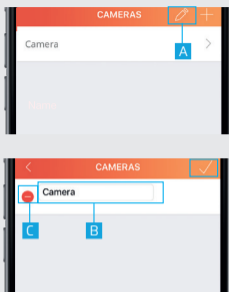
A Mount the camera by following step 9. After mounting guide the cables through the hole in the wall inside the building like above picture.

B Connect the camera using a network cable from your router/modem to the network adapter of the camera. Then connect the power adapter to the power cable and insert the plug of the power adapter into a wall socket.



9 Mount the Camera

Drill a hole in the wall where the cables can run through. Place the mounting foot on a flat surface and screw it tightly using the included screws and plugs. Make sure the screw holes are not placed in a crack or a hole.

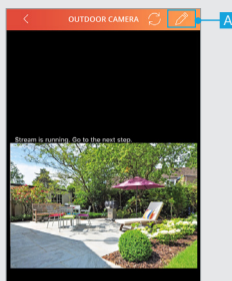


10 Edit/Delete camera

A Press the pencil button at the top of the screen to EDIT the name of the camera or to DELETE it.

B Press on the name of the camera to begin editing the name. Press the CONFIRM button when done.

C Press the DELETE button to delete the camera. Press the CONFIRM button when done.

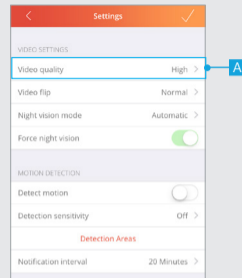


11 Configure camera

First open the camera view by pressing on the camera name

A Press the edit button at the top right of the screen.

B The settings page of the camera will open and an overview is shown of the current configuration of the camera.



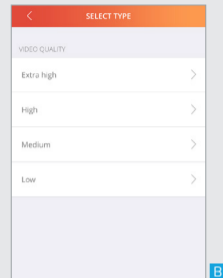
12 Video Settings

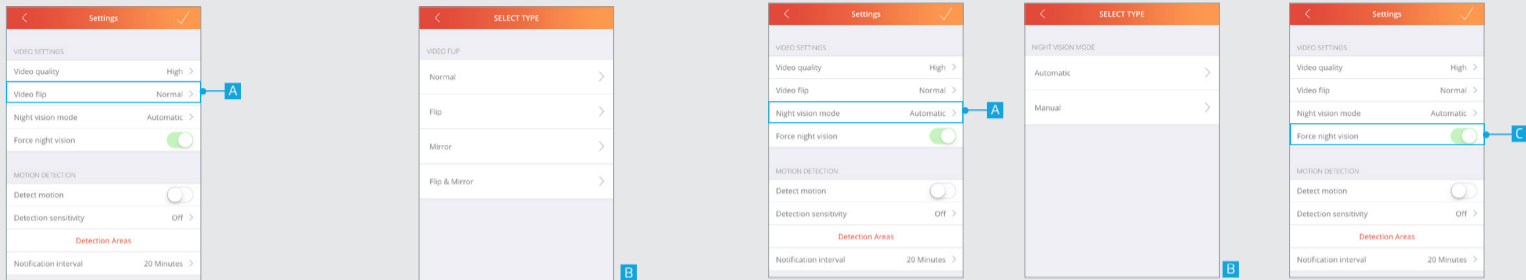
12.1 Video quality

A To change the quality of the video stream press Video Quality.

B A list is shown of the different video qualities which can be chosen. Select the desired video quality.

After selecting the desired video quality the app will return to the settings screen.





12.2 Video flip

With video flip you can flip the video stream. For example when the camera is mounted upside down on a ceiling.

A To flip the video stream press Video flip

B A list is shown of the different ways to flip the video stream. Select the desired way to flip the video stream.

After selecting the desired way to flip the video stream the app will return to the settings screen.

12.3 Nightvision mode

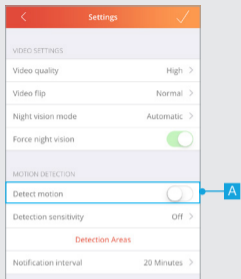
With nightvision mode you can select if the camera must switch automatically to night vision when there is not enough surrounding light or set it to manual so the nightvision can be switched on or off manually.

A To choose the desired night vision mode press Night vision mode

B A list is shown of the different ways to enable night vision.

After selecting the desired way to enable night vision the app will return to the settings screen.

C When Night vision mode is set to Manual you can enable/disable night vision with the option Force night vision

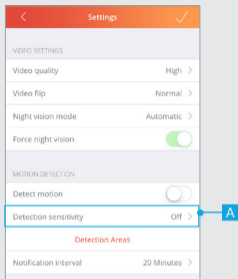


13. Motion detection

13.1 Detect motion

The IP camera has the option to detect motion. When detection motion is turned on a push notification will be sent when motion has been detected. Note: make sure you give the app permission to receive push notifications.

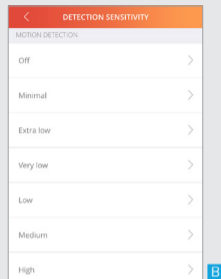
A Press the detect motion toggle to enable or disable motion detection.



13.2 Detection sensitivity

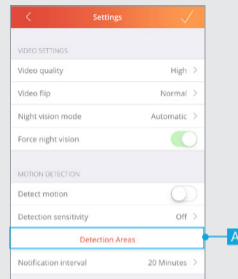
It is possible to change the sensitivity of when the camera should detect motion

A To change the sensitivity of the motion detection press Detection sensitivity.



B A list is shown of the different motion detection sensitivities. Select the desired sensitivity.

After selecting the desired detection sensitivity the app will return to the settings screen.



13.3 Detection areas

With detection areas a specific area can be set in which the camera can detect motion. The camera will only trigger when motion is detected in the specified areas.

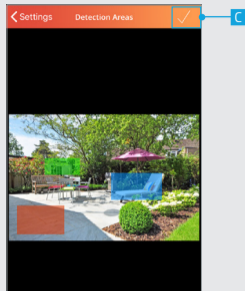
A To set the detection areas for the camera press Detection Areas.



B The detection area screen will open. Here you can select the area in which the camera must detect motion. It is possible to setup three different areas in which the camera must detect motion.

To select the desired area press on the red square on the bottom of the screen. Now draw the detection area in the picture on your screen.

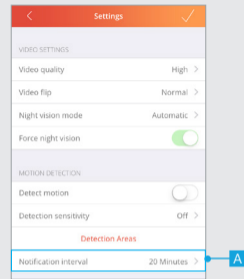
To setup another detection area select another color box on the bottom of your screen and draw another detection area on the screen.



C To confirm the detection areas press the confirmation button on the top of your screen.

If only one detection area is needed then press again on the colorbox which you want to remove on the bottom of your screen (blue and green).

After confirming the detection areas the app will return to the settings screen.



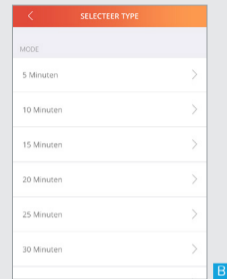
13.4 Notification interval

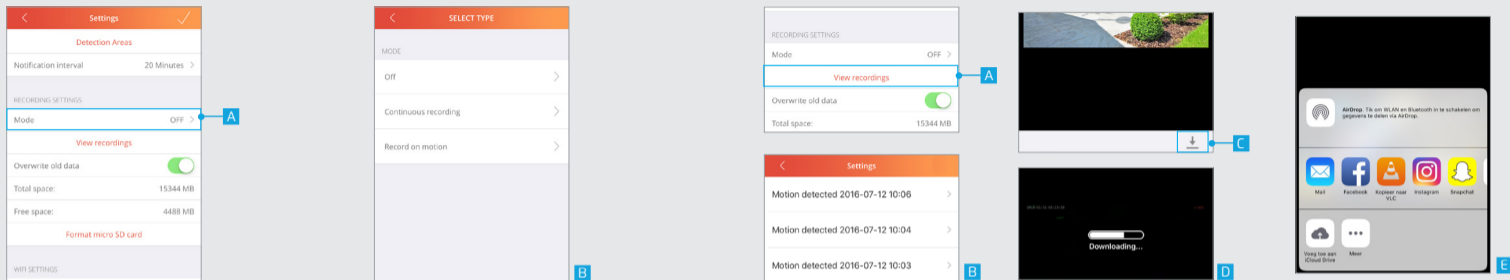
It is possible to change the time between push notifications after motion is detected

A To change the time between notifications press Notification interval.

B A list is shown of the notification intervals. Select the desired notification interval.

After selecting the notification interval the app will return to the settings screen.





14. Recording settings

14.1 Mode

You can change when the camera records the video stream

A To change when the camera records the video stream press Mode.

B A list is shown of the recording modes. Select the desired recording mode.

Off: With this option the camera will not record the video stream

Continuous recording: With this option the camera keeps recording the video stream

Record on motion: With this option the camera only records the video stream when motion has been detected.

After selecting the recording mode the app will return to the settings screen.

14.2 View recordings

A When the video stream has been recorded you can view the recording by pressing View recordings

B A new screen is opened with an overview of the recorded video streams. Press the recording you want to view.

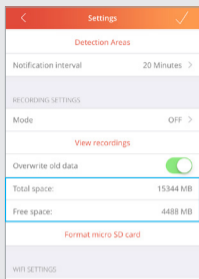
The recorded video is played back.

C To download the recorded video press the download button on the bottom of your screen.

D The recorded video is being downloaded.

E (For IOS) Choose the desired location where the video stream needs to be saved. Note: To play the saved video on an iPad or iPhone use VLC.

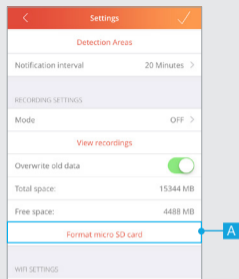
(For Android) The recorded stream will be saved in the screenshots folder.



14.3 Total space and Free space

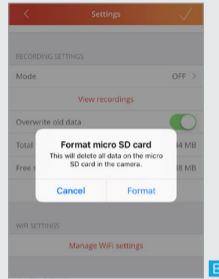
Total space: Here you can see what the total size is of the internal micro SD card that is placed inside the camera.

Free space: Here you can see the free space that is still available on the internal micro SD card.

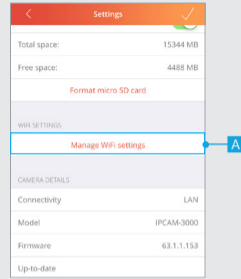


14.4 Format SD card

A Press Format micro SD card to erase the micro SD card. Note: The micro SD card will be completely erased with this function. Make sure you have a backup.



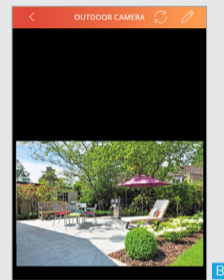
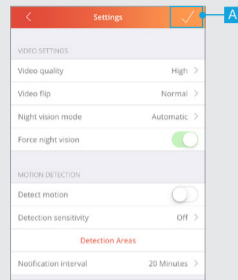
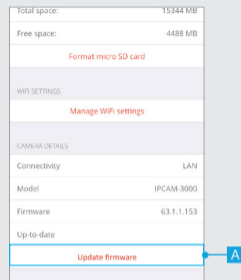
B A pop-up is shown to confirm the micro SD card is going to be formatted. Press Format to completely erase the micro SD card.



15 WIFI Settings

15.1 Manage WIFI Settings

A To change the WIFI network of the camera press the Manage WIFI settings button.



- B** A new screen is opened. Select the desired WIFI network the camera should connect to.
- C** Fill in the password for the WIFI network
- D** Press CONFIRM

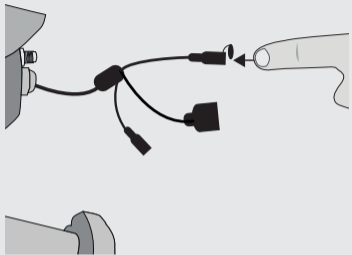
16. Camera details

16.1 Update firmware

A When a new firmware is available for the IP camera the option Update Firmware becomes available. Press Update firmware to download and install the latest firmware for the IP Camera. After the new firmware is downloaded and installed the camera will reboot.

17. Save configuration

- A** When you are done configuring the camera press the CONFIRM button to save the changes of the camera configuration.
- B** The App will return to the video stream screen.



Reset Camera

⚠ When the camera is reset all settings will be lost and the camera needs to be re-installed.

To reset the camera open the cap of the reset cable and press the reset button for approx 10 sec. The camera will reset and reboot. After rebooting the blue LED will light up.

 If possible, dispose of this product at a recycling center. Do not dispose of this product with the household waste. WEEE: Dispose of the device at a recycling centre. More information: www.trust.com

Warranty

This product is covered by the legal warranty that applies to your country and it begins on the day of purchase. For additional information, visit: www.trust.com/warranty.

Copyright

The contents of the "User manual" are subject to copyright protection. Without prior written permission, reproducing or copying is prohibited. Information in these documents is subject to change without prior notice. Check www.trust.com/71183 for updates.

 For support and FAQ go to trust.com/71183

Declaration of conformity

Trust International B.V. declares that the TRUST SMART HOME-product:

model:	IPCAM-3000
item number:	71183
intended use:	Outdoor

is in compliance with the essential requirements and other relevant provisions of the following directives: EMC Directive (2014/30/EU), Low Voltage Directive (2014/35/EU), ROHS Directive (2011/65/EC), RED Directive (2014/53/EU). The product is compatible with the following norms/standards:

EN 301-489-1 V2.1.1 (2017)
EN 301-489-17 V3.1.1 (2017)
EN 300 328 V2.1.1 (2016)
EN 62311: 2008
EN 60950-1 :2006+A11 :2009+A1: 2010+A12 :2011+A2 :2013
EN 50581:2012

Manufacturer/Authorised representative,



H. Donker, Procurement Director

Dordrecht, 22-01-2018

Trust International B.V.
LAAN VAN BARCELONA 600
3317DD DORDRECHT
NETHERLANDS
www.trust.com

www.trust.com
