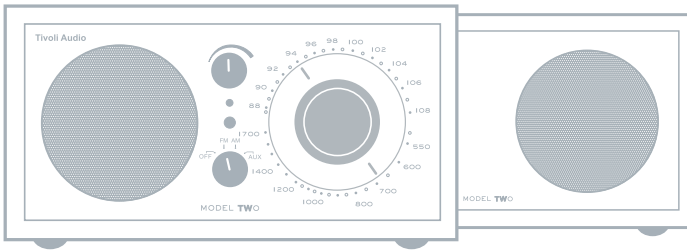


OWNER'S MANUAL

# Model Two®



**Tivoli Audio®**



This symbol is intended to alert the user to the presence of uninsulated "dangerous voltage" within the product's enclosure that may be of sufficient magnitude to constitute a risk of electric shock to persons.



This symbol is intended to alert the user to the presence of important operating and maintenance (servicing) instructions in the literature accompanying the appliance.

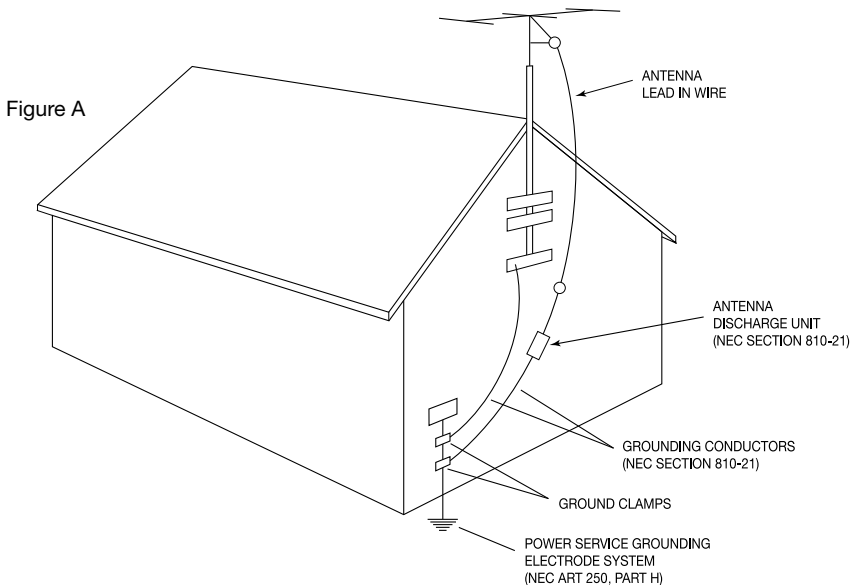
## Important Safety Instructions

1. Read these instructions.
2. Keep these instructions.
3. Heed all warnings.
4. Follow all instructions.
5. **WARNING** – To reduce the risk of fire or electric shock, do not expose this apparatus to rain or moisture.
6. Clean only with a dry cloth.
7. Do not block any ventilation openings. Install in accordance with the manufacturer's instructions.
8. Do not install near any heat sources such as radiators, heat registers, stoves, or other apparatus (including amplifiers) that produce heat.
9. Do not defeat the safety purpose of the polarized or grounding-type plug. A polarized plug has two blades with one wider than the other. A grounding type plug has two blades and a third grounding prong. The wide blade or the third prong is provided for your safety. If the provided plug does not fit into your outlet, consult an electrician for replacement of the obsolete outlet.
10. Protect the power cord from being walked on or pinched particularly at plugs, convenience receptacles, and the point where they exit from the apparatus.
11. Only use attachments/accessories specified by the manufacturer.
12. Use only with the cart, stand, tripod, bracket, or table specified by the manufacturer, or sold with the apparatus. When a cart is used, use caution when moving the cart/apparatus combination to avoid injury from tip-over.
13. Unplug this apparatus during lightning storms or when unused for long periods of time.
14. Refer all servicing to qualified service personnel. Servicing is required when the apparatus has



been damaged in any way, such as power-supply cord or plug is damaged, liquid has been spilled or objects have fallen into the apparatus, the apparatus has been exposed to rain or moisture, does not operate normally, or has been dropped.

15. This product has been tested and found to comply with the limits for Part 15 of the FCC rules. These limits are designed to provide reasonable protection against harmful interference in a residential installation. This product generates, uses, and can radiate radio frequency energy and, if not installed and used in accordance with the instructions, may cause harmful interference with radio communications. However, there is no guarantee that interference will not occur in a particular installation. If this equipment does cause harmful interference to radio or television reception, which can be determined by turning the product on and off, the user is encouraged to try to correct the interference by one or more of the following measures:
- Reorient or relocate the receiving antennas.
  - Increase the separation between the equipment and the receiver.
  - Connect the equipment to an outlet on a circuit different from that to which the receiver is connected.
16. If an outside antenna or cable system is connected to the product, be sure the antenna or cable system is grounded so as to provide some protection against voltage surges and built-up static charges. Article 810 of the National Electrical Code, ANSI/NFPA 70, provides information with regard to proper grounding of the mast and supporting structure, grounding of the lead-in wire to an antenna discharge unit, size of grounding conductors, location of antenna-discharge unit, connection to grounding electrodes, and requirements for the grounding electrode. See figure A.



17. For added protection for this product during a lightning storm, or when it is left unattended and unused for long periods of time, unplug it from the wall outlet and disconnect the antenna or cable system. This will prevent damage to the product due to lightning and power-line surges.
18. An outside antenna system should not be located in the vicinity of overhead power lines or other electric light or power circuits, or where it can fall into such power lines or circuits. When installing an outside antenna system, extreme care should be taken to keep from touching such power lines or circuits as contact with them might be fatal.
19. Operate this product only from the type of power source indicated on the rear panel.  
For products using an external power supply, use an exact replacement if lost or damaged.  
For products operating from battery power, refer to the user manual.
20. Unplug this product from the wall outlet and refer servicing to qualified service personnel under the following conditions:
  - a. When the power supply cord or plug is damaged.
  - b. If liquid has been spilled or objects have fallen into the product.
  - c. If the product has been exposed to water or rain.
  - d. If the product does not operate normally by following the operating instructions.
  - e. If the product has been dropped or damaged in any way.
  - f. When the product exhibits a distinctive change in performance.
21. Keep this product a safe distance away from naked flame, such as a lit candle.
22. Apparatus shall not be exposed to dripping or splashing and no objects filled with liquids, such as vases, shall be placed on the apparatus.
23. The recommended operating temperature range is 41° F to 104° F (5° C to 40° C).
24. The 12VDC input is suited for operating this product in a boat or camper using an optional 12VDC, 2A fused adapter.
25. **WARNING** – The mains are not disconnected in the off position, but the circuits are de-powered.

## Model Two Instructions

Congratulations on your purchase of the Model Two table radio. We believe the Model Two to be one of the finest stereo analog table radios on the market today.

We know you are eager to use your new radio, but please take a moment to read this owner's manual and Safety Instructions. If you have any questions, please do not hesitate to contact your dealer or Tivoli Audio.

**Please save the carton and original packing should you ever need to ship your radio, as shipping damage is not covered by the factory warranty.**

On behalf of all of us, thank you for choosing Tivoli Audio and enjoy your new Model Two!

## About Tivoli Audio

Tivoli Audio was founded by Tom DeVesto with the mission of bringing simple to use, elegantly designed, high quality audio products to consumers. As CEO and head of research and development at his former company, Cambridge SoundWorks, Tom was responsible for the development of many of the best selling home entertainment and multi-media products on the market. He also held senior management positions in product development at both Advent and Kloss Video.

Henry Kloss (1929-2002) began his long love affair with audio back in the early 1950's when, as a student at M.I.T., he began building speaker enclosures for fellow students who wanted to exploit the sound of live FM broadcasts of the Boston Symphony Orchestra. With encouragement from Major Edwin Armstrong, inventor of FM, and M.I.T. lab staff, he co-founded Acoustic Research in 1952. At Acoustic Research, Henry co-invented the revolutionary AR1 acoustic suspension loudspeaker, which forever changed the way audio was reproduced. In 1957 he went on to co-found KLH where he introduced audio enthusiasts to the Model Six loudspeaker, Model Eight FM table radio, and the Model 11 portable phonograph. Ten years later at Advent, he designed one of the first projection televisions (which earned him an Emmy Award), along with one of the first consumer cassette decks utilizing Dolby B noise reduction\*\*. After continuing projection television work at Kloss Video, Henry co-founded Cambridge SoundWorks in 1988 along with Tom DeVesto. In 2000, at the age of 70, Henry emerged from retirement to once again team-up with DeVesto to produce the original, critically acclaimed Model One mono table radio.

\*Cambridge SoundWorks is a registered trademark of Creative Labs, Singapore.

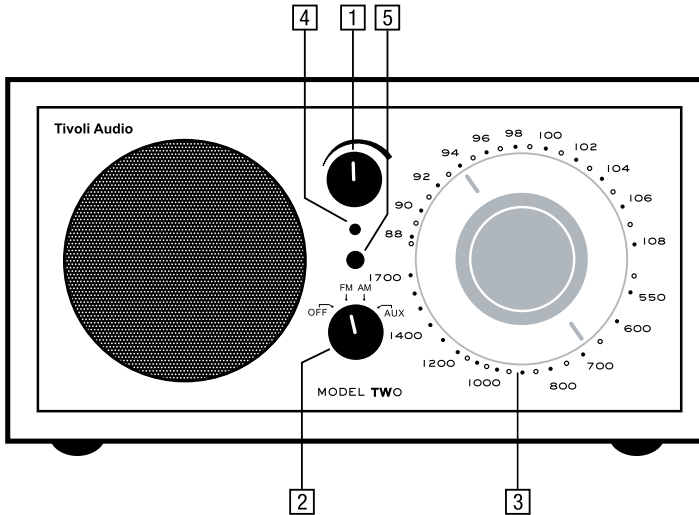
\*\*Dolby is a registered trademark of Dolby Labs, Inc.

### **Packed with your Model Two you should find one each:**

- One (1) External FM Antenna
- One (1) 9 Foot (2.7M) Power Cord
- One (1) Model Two main unit and self-adhesive rubber feet
- One (1) Right speaker with RCA cable and self-adhesive rubber feet

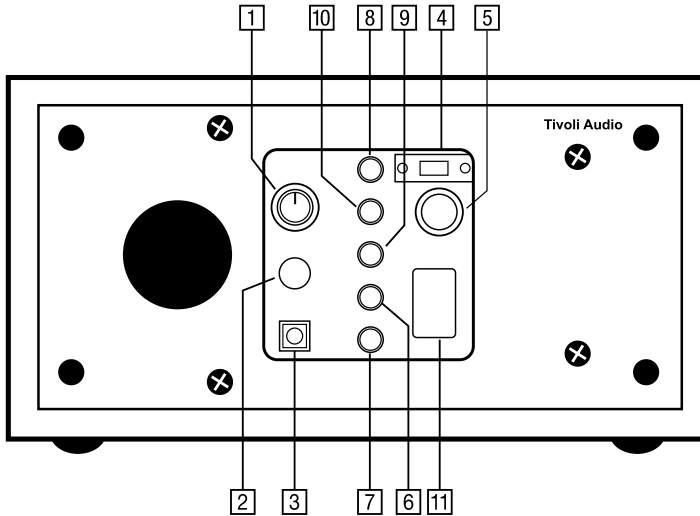
Please contact your dealer or Tivoli Audio if any of these items are missing.

## Guide to Features (Front panel):



1. **VOLUME:** Turn the volume knob to the right to increase the volume or to the left to decrease the volume of the Model Two's speakers. This knob will also control the volume of headphones when connected.
2. **OFF/FM/AM/AUX:** Turn the knob 1 click to the right to select the FM band, 2 clicks to the right to select the AM band, or 3 clicks to the right to select the Aux input.
3. **TUNING KNOB:** Rotate the analog tuning dial to the right or to the left to adjust the FM (upper half of dial) or AM (lower half of dial) frequency range.
4. **POWER LIGHT:** Glows when the unit is active.
5. **TUNING INDICATOR:** Brightest when best tuning has been achieved. Some listenable AM stations will not light the tuning indicator and should be tuned by ear for the clearest signal. This light may or may not remain lit when in the AUX position depending upon the position of the AM dial.

## Guide to Features (Rear panel):



1. **BALANCE:** Turn the balance knob upward to hear the main unit speaker or downward to hear the right speaker. The center detent provides equal balance between the two speakers.
2. **R-SPR:** Connect the RCA cable from the right speaker to this input.
3. **12VDC:** Use this input to operate the Model Two from a DC power supply. Never use this DC power input and the AC input at the same time.
4. **ANTENNA SWITCH:** Switch between internal and external FM antennae. This switch has no effect on AM reception.
5. **EXTERNAL FM CONNECTION:** The Model Two has built-in AM and FM antennae. To improve FM reception, slide the black plastic end of the FM antenna over this “F” connector and set the switch to “EXTERNAL”. Adjust the wire for best reception. See section marked “Reception” for more information.
6. **HEADPHONE:** Connect a headset (not Included) to this stereo output for private listening. The headphone volume will be controlled by the Model Two’s volume knob. Connecting a pair of headphones will mute the Model Two’s speakers. This jack accepts a 1/8" male stereo mini plug.
7. **SUB OUT:** Connect a powered subwoofer to this output for enhanced bass. This jack accepts a 1/8" male stereo mini plug.
8. **AUX IN:** To hear the audio from another device (CD player, digital audio (mp3) player, etc.) through the Model Two’s speakers, connect the device to this stereo input. This jack accepts a 1/8" male stereo mini plug.
9. **REC OUT:** You may record from the Model Two by connecting a cassette deck or other recording device to this fixed-level, stereo output. You may also use the Model Two as an AM/FM tuner by connecting a receiver or integrated amplifier to this output. The Model Two’s speakers will not be muted when using this output. This jack accepts a 1/8" male stereo mini plug.

10. **MIX IN:** Connect your computer's audio output (or other device) to this stereo input to hear its audio mixed-in with either the tuner or Aux device if one is connected. The volume level of this input must be adjusted at the source. This jack accepts a 1/8" male stereo mini plug.
11. **AC INPUT:** Connect the supplied power cord to this jack.

### **Reception:**

The Model Two's internal FM and AM antennas will provide good reception. An optional outdoor antenna will provide the best possible reception. Another alternative is to use the supplied indoor external FM antenna or an optional FM dipole antenna with adapter. Locating the indoor antenna near a window or outside wall will provide better reception than more interior locations. For AM, rotate the radio for best reception. An optional external AM wireless antenna may provide improved AM reception. Buildings made with concrete, steel, or aluminum siding will hinder reception. Household appliances, electric blankets, computers, CD players, and other electronic devices can also adversely affect reception or inject noise. If you experience this, move the Model Two radio further from the offending device or plug it into an electrical outlet not shared by another device. Metal surfaces may also hinder AM reception.

### **Additional Speakers:**

The Model Two was designed to be used with the supplied right speaker. Do not connect any other speaker to the Model Two. Doing so will void your warranty and possibly damage the radio and/or the speaker.

### **Placement:**

Place the unit on a flat, stable surface. Do not block the rear bass port. The Model Two radio and stereo speaker can be positioned vertically as well as horizontally. Placement in a bookcase, cabinet, or close to walls or corners may inflate the bass. The Model Two is magnetically shielded but it is still advisable to keep speakers 3 inches away from a computer monitor or television set.

### **Cleaning:**

Never use any harsh cleansers or solvents on your radio. Avoid spray-on waxes. Unplug the Model Two radio prior to cleaning. The face may be cleaned with a slightly damp, soft cloth. Painting or staining the wood cabinet will void your warranty.

**Tivoli Audio cabinets use real wood veneers. Since normal wood varies greatly, it is not possible to achieve an exact color / grain match between the main unit and stereo speaker or between different models. You may also notice the wood darkens over time with exposure to sunlight. Again, this is normal for real wood.**



## Limited Warranty:

Tivoli Audio manufactures its products to very high standards and we are confident our products will perform well. Accordingly, we provide a limited warranty on this product against manufacturing defects in material and workmanship to the original owner, for a period of one year from the original date of purchase. This warranty is non-transferable.

This Limited Warranty covers the functionality of the product for its normal, intended use as specified in this Owner's Manual. It does not cover a malfunction or damage that has resulted from improper or unreasonable use or installation, faulty ancillary equipment, modifications, unauthorized repair, shipping damage or loss, abuse, accidents, use on improper voltage/current, power surges, lightning or other acts of God, excess moisture, normal wear and tear, commercial use, or purchase from unauthorized dealers. Proof of purchase as evidence the unit was purchased from an authorized dealer may be required for warranty service. **Please contact the dealer of purchase or local distributor for warranty service or repair.**

Returns of any model purchased directly from Tivoli Audio via our website, telephone, mail, or fax: must have a Return Authorization (RA) number clearly indicated on the outside of the package. An RA number can be obtained by phoning Tivoli Audio customer service (1.877.297.9479) with the product's model name, serial number, approximate date of purchase, and detailed description of the problem, or by filling out the RA form on our web site ([www.tivoliaudio.com](http://www.tivoliaudio.com)). **PRODUCTS RETURNED TO TIVOLI AUDIO WITHOUT A VALID RA # WILL BE RETURNED UNOPENED TO THE SENDER.**

Please refrain from opening this product or taking it apart as doing so will void this Limited Warranty. There are no user serviceable parts inside. Tivoli Audio will not pay for costs incurred due to correction of reception problems, elimination of externally generated static/noise, loss of time, inconvenience, loss of use of product, or damage caused by improper use of this product.

In the event the product is returned during the warranty term and is eligible for service under this Limited Warranty, we will repair or replace any defective parts within a reasonable period of time and free of charge.

**THIS LIMITED WARRANTY GIVES YOU SPECIFIC LEGAL RIGHTS SUBJECT TO SPECIFIED CONDITIONS. YOU MAY ALSO HAVE OTHER LEGAL RIGHTS WHICH APPLY TO THE PRODUCT YOU HAVE ACQUIRED. SOME PLACES DO NOT ALLOW THE EXCLUSION, RESTRICTION, OR MODIFICATION OF CERTAIN IMPLIED RIGHTS OR THEIR EFFECT. IN THOSE SITUATIONS THIS LIMITED WARRANTY WILL ONLY APPLY TO THE EXTENT THAT THE APPLICABLE LAW ALLOWS.**

The provisions of the Limited Warranty are in lieu of any other warranties or conditions, except those provided by law. This Limited Warranty does not affect any legal rights provided to you by law and does not preclude any remedy you may have under law.

In states where liability limits are not precluded by statute, the maximum liability of Tivoli Audio shall not exceed the purchase price paid by you for the product. In states where limitations of liability are precluded by law, Tivoli Audio shall be liable for no more than the direct damages for bodily injury, and/or real or personal property arising from the negligence of Tivoli Audio.

Where not prohibited by law, Tivoli Audio shall not be liable for special, incidental, consequential, or indirect damages. Some places do not allow limitations on the exclusion or limitation of relief, special, incidental, consequential or indirect damages, or the limitation of liability to specified amounts, so the above limitations or exclusions may not apply to you.

This Limited Warranty is void if the label bearing the serial number has been removed or defaced.

For service outside the USA, please contact your local distributor.

If you purchased an extended service contract from your dealer and service is required after the term of this Limited Warranty has expired, please contact your extended service contract provider to obtain service.

For your convenience, you may register your product for warranty service online at our website, [www.tivoliaudio.com](http://www.tivoliaudio.com). There is no legal obligation for you to provide personal information. However, such information allows us to maintain a record of the Tivoli Audio products acquired by you and better understand the purchasers of our products. The information collected will be used for marketing purposes by Tivoli Audio and, where permitted, to contact you in relation to the products you have acquired or other products which might be of interest to you from Tivoli Audio or other companies. The information that you provide may be processed in another country.

You may email questions to us at [mail@tivoliaudio.com](mailto:mail@tivoliaudio.com)

## Specifications:

<b>Model:</b>	Tivoli Audio® Model Two®
<b>Type:</b>	AM/FM analog stereo table radio
<b>Driver:</b>	Two 3" (76.2mm) full-range drivers
<b>Densions:</b>	8.375" W x 4.5" H x 5.25" D (212.7mm W x 114.3mm H x 133.35mm D)
<b>Weight:</b>	9lbs (4.1 kg) Total

Specifications subject to change without notice.

Tivoli Audio reserves the right to make product changes without notice.

Tivoli Audio, the Tivoli Audio logo and Model Two are trademarks of Tivoli Audio, LLC.

This manual was written by Peter Skiera and cannot be reproduced in whole or in part without the permission of Tivoli Audio. The information included within this owner's manual was accurate at the time of printing. Tivoli Audio shall not be held liable for operational, technical, or editorial errors/omissions. Visit our website for the latest version of the owner's manual.

**For more information about other exciting products from Tivoli Audio, please visit our website or contact us directly:**

Tivoli Audio, LLC  
Seaport Center  
70 Fargo Street, Suite 900  
Boston, MA 02210 USA  
1.877.297.9479  
[www.tivoliaudio.com](http://www.tivoliaudio.com)  
[help@tivoliaudio.com](mailto:help@tivoliaudio.com)