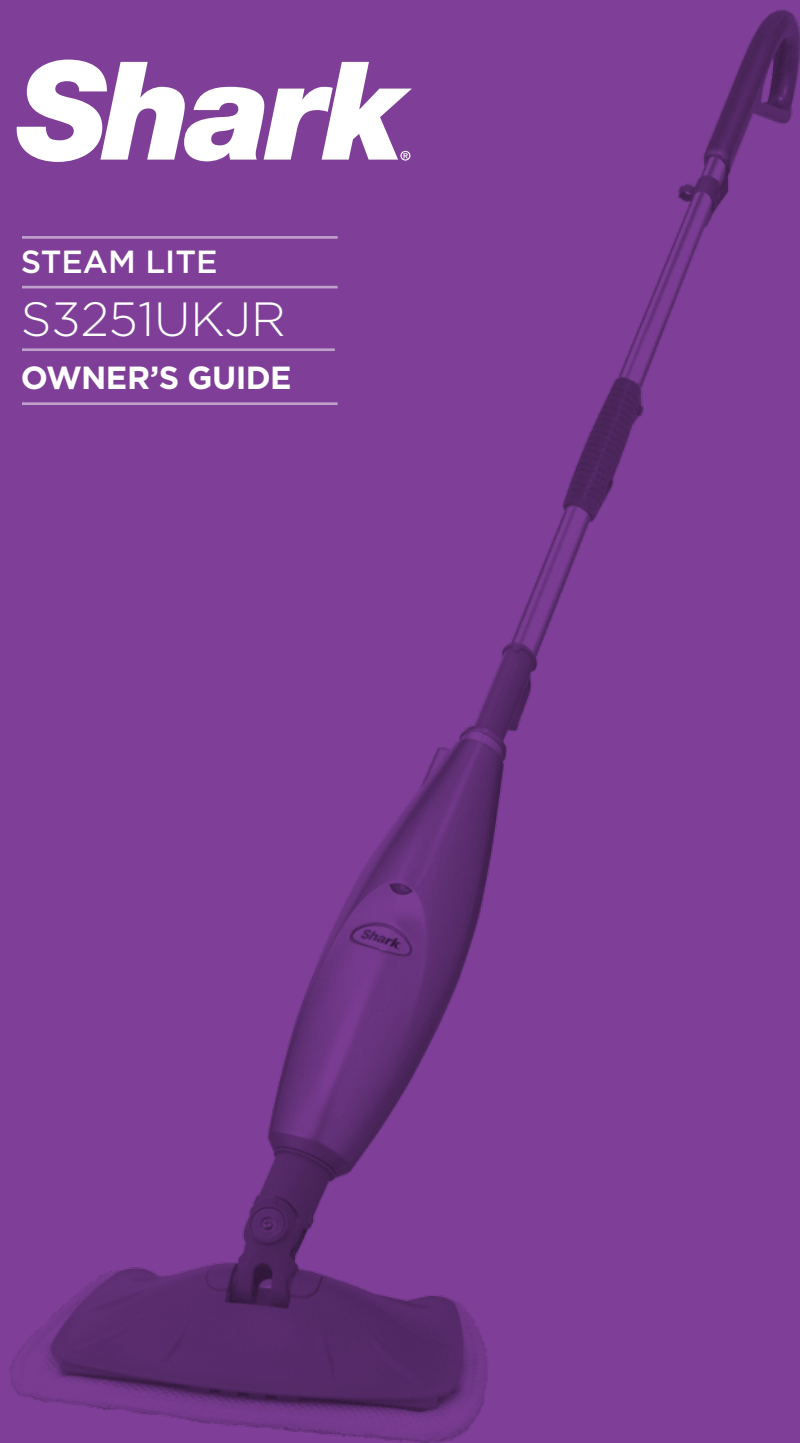


Shark[®]

STEAM LITE

S3251UKJR

OWNER'S GUIDE



IMPORTANT SAFETY INSTRUCTIONS

For Household Use Only

WHEN USING YOUR **SHARK®** STEAM MOP, BASIC SAFETY PRECAUTIONS SHOULD ALWAYS BE FOLLOWED, INCLUDING THE FOLLOWING:

WARNING: To REDUCE THE RISK OF FIRE, ELECTRIC SHOCK OR INJURY READ ALL INSTRUCTIONS BEFORE USING YOUR **SHARK®** STEAM LITE.



DANGER OF SCALDING.

Please use caution when using the steam mop. The steam emitted from the openings is very hot.

IMPORTANT:

This appliance can be used by children aged from 8 years and above and persons with reduced physical or mental capabilities or lack of experience and knowledge if they have been given supervision or instruction concerning the use of the appliance in a safe way and understand the hazards involved. Children should be supervised to ensure that they do not play with the appliance. Cleaning and user maintenance shall not be made by children without supervision.

WARNING:

TO REDUCE THE RISK OF FIRE, ELECTRIC SHOCK OR INJURY:

1. Use the system only for its intended use.
2. **DO NOT** use outdoors.
3. **DO NOT** leave the appliance unattended when plugged in. Always unplug the power cord from the electrical outlet when not in use and before servicing.
4. **DO NOT** allow the appliance to be used by children. Close attention is necessary when used by or near children, pets or plants.
5. Children should be supervised to ensure that they do not play with the appliance.
6. Use only as described in this manual.
7. Use only manufacturer's recommended accessories.
8. To protect against a risk of electric shock, **DO NOT** immerse the steam mop into water or any other liquids.
9. **DO NOT** handle plug or steam mop with wet hands or operate appliance without shoes.
10. **DO NOT** pull or carry by power cord, use power cord as handle, close a door on the power cord, or pull the power cord around sharp edges or corners. Keep power cord away from heated surfaces.
11. **DO NOT** unplug by pulling on power cord. To unplug, grasp the plug not the power cord. Do not use extension cords or outlets with inadequate current carrying capacity.
12. **DO NOT** put any objects into openings. Do not use with any opening that is blocked.

13. **DO NOT** put hands or feet under the steam mop. Unit gets very hot.
14. Use **ONLY** on flat, horizontal surfaces. Do not use on walls, counters or windows.
15. **DO NOT** use on leather, wax polished furniture or floors, synthetic fabrics, velvet or other delicate, steam sensitive materials.
16. Liquid or steam must not be directed towards equipment containing electrical components, such as the interior of ovens.
17. **DO NOT** add cleaning solutions, scented perfumes, oils or any other chemicals to the water used in this appliance as this may damage the unit or make it unsafe for use. If you live in a hard water area, we recommend using distilled water in your steam mop.
18. When in use, NEVER turn the appliance over or on its side. **NEVER DIRECT STEAM TOWARDS PEOPLE, ANIMALS OR PLANTS.**
19. **NEVER LEAVE THE STEAM MOP IN ONE SPOT ON ANY SURFACE FOR ANY PERIOD OF TIME WHEN MICROFIBRE PAD IS ATTACHED AS THIS WILL DAMAGE YOUR FLOORS.**
20. Carefully remove the microfibre cleaning pad immediately after you have unplugged and allowed the steam mop to cool.
21. When cleaning the steam mop, unplug the power cord from the electrical outlet and clean with a dry or damp cloth. Do not pour water or use alcohol, benzene or paint thinner on the unit.
22. Extreme caution should be exercised when using this appliance to clean stairs.
23. Never use steam mop without microfibre cleaning pad attached.
24. Keep your work area well lit.
25. Store steam mop indoors in a cool, dry place.
26. To avoid circuit overload, do not operate another appliance on the same socket (circuit) as the steam cleaner.
27. If an extension cord is absolutely necessary, an extension cord rated a minimum of 15 ampere, 14 gage cord should be used. Cords rated for less amperage may overheat. Care should be taken to arrange cord so that it cannot be pulled or tripped over.
28. **DO NOT** leave unattended when the system is connected to a power supply or electrical outlet. Turn off all controls before unplugging the unit.
29. **DO NOT** store unit with damp or wet microfibre cleaning pad attached. Never leave the steam mop in one spot on any surface for any period of time with a damp or wet microfibre cleaning pad attached as this will damage your floors
30. Always unplug and allow the steam mop to cool before removing or changing mop heads.
31. Make sure that the water tank door closed when using the appliance.



WARNING: Your steam mop is designed to clean hard floor surfaces that will withstand high heat. Do not use on unsealed wood or unglazed ceramic floors. On surfaces that have been treated with wax or some no wax floors, the sheen may be removed by the heat and steam action. It is always recommended to test an isolated area of the surface to be cleaned before proceeding. We also recommend that you check the use and care instructions from the floor manufacturer.

SAVE THESE INSTRUCTIONS

Quick Start

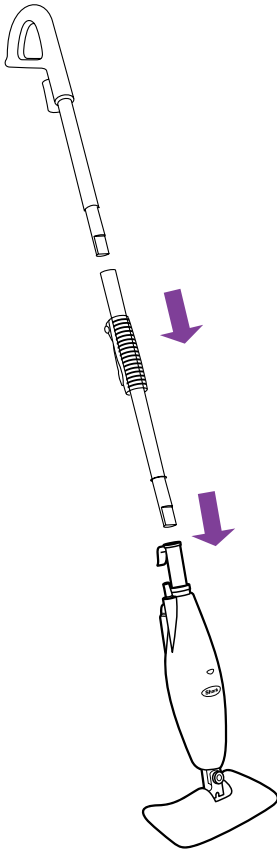


fig. 1

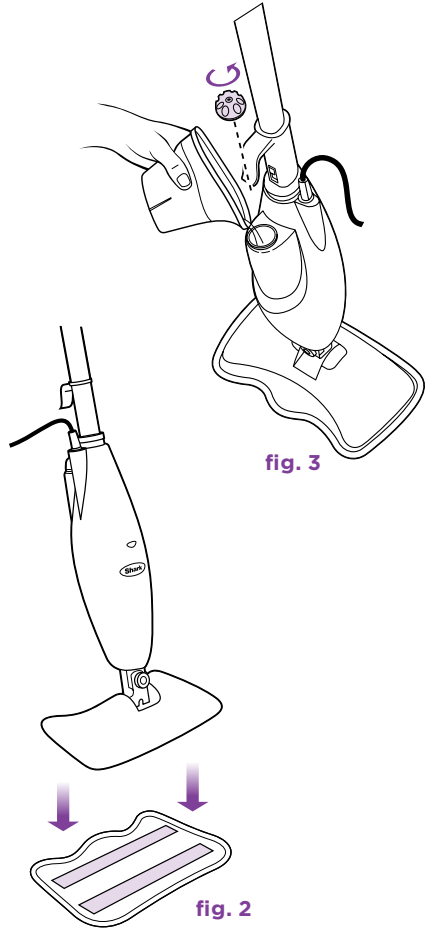


fig. 3

fig. 2

ASSEMBLE

- 1 Fit together the extension tubes as shown in the illustration. (fig. 1)
- 2 Place the microfibre cleaning pad underneath the mop head, with quick fastener strips facing up. Simply press the mop to the pad to attach it. (fig. 2)

FILL

- 3 Remove the cap to fill the water tank. Use the filling flask to fill the tank with water to the "MAX" fill line. Replace the water tank cap. (fig. 3)

- QUICK TIP:** For easier pushing and pulling, extend the handle length.

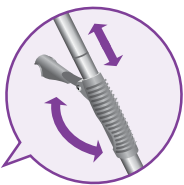


fig. 4

STEAM CLEANING

- For your comfort, you can adjust the height of the mop. Just lift the latch on the tube 90 degrees to the open position. Holding the handle, extend the tube to the desired height and then close the latch to the locked position.
- Plug in the mop. Wait 30 seconds for the unit to heat up and the steam to be ready.

Push the handle toward the mop head in a pumping motion. Customise steam output by slow or fast mopping with a forward and backward motion. (**fig. 4**)

NOTE: Do not leave your Steam Mop unattended during use.

IMPORTANT: Never leave the steam mop in one spot for any period of time with a damp or wet microfibre pocket attached as this will damage your floors.

This appliance complies with the WEEE-Directive 2002/96/EC on the disposal of electrical and electronic equipment (WEEE).

This appliance complies with the European directives for electromagnetic compatibility (EMC) 2004/108/EC and its revisions, as well as Low Voltage Directive (LVD) 2006/95/EC and its revisions.



This marking indicates that this product should not be disposed with other household wastes throughout the EU. To prevent possible harm to the environment or human health from uncontrolled waste disposal, recycle it responsibly to promote the sustainable reuse of material sources. To return your used device, please use the return and collection systems or contact the retailer where this product was purchased. They can take this product for environmental safe recycling.

This product has no on/off switch and operates when plugged into the main supply source. Disconnect the plug from mains after use.

Although the product is not provided with standby mode or off mode, it still fulfills the requirements of 1275/2008/EC - the directive for Eco-Design requirements since according to technical justification, it is considered as inappropriate to provide standby and off modes when connecting to mains. To reduce energy consumption be sure to unplug the unit after use.

Guarantee: This product is unconditionally guaranteed for one year against all defects of workmanship and materials. This guarantee does not affect your statutory rights. If this product proves unsatisfactory please contact our customer service department on freephone 0800 781 7831.

THIS BOOK COVERS MODEL NUMBER:

S3251UKJR 11

TECHNICAL SPECIFICATIONS

Voltage: 220-240V~, 50/60Hz.

Power: 1550 Watts

Water

Capacity: 250 ml (8 oz.)



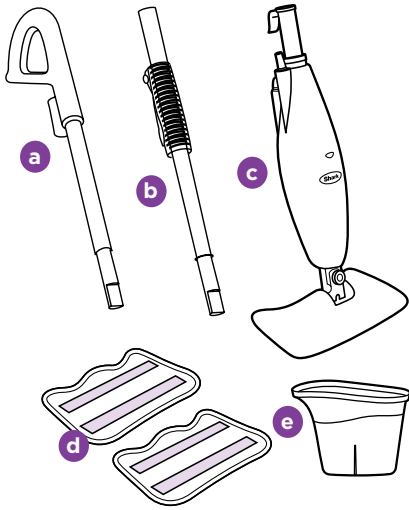
Contents

Thank you for
purchasing
the **Shark®**
Steam Lite
Steam Mop.

GETTING STARTED.....	2
USING YOUR STEAM MOP.....	5
CARE OF YOUR STEAM MOP.....	8
TROUBLESHOOTING	9

Getting Started

When assembling your steam mop there may be a little water in or around the water tank. This is because we test all our steam mops 100% before you buy them, so you get a quality **Shark® Steam Lite Steam Mop**.



FIRST THINGS FIRST, YOU NEED TO KNOW WHAT'S IN THE BOX YOU JUST OPENED:

- a Upper Extension Tube
- b Lower Extension Tube (Telescopic)
- c Steam Mop Base
- d 2 Microfibre Cleaning Pads
- e Filling Flask

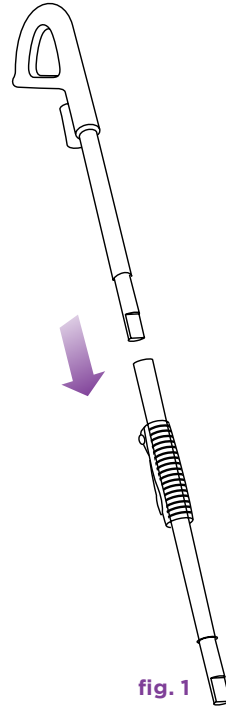


fig. 1

ASSEMBLY

- 1 Remove all the parts from the package. Verify all the listed parts are included.
- 2 Slide the upper extension tube (the tube with the handle) into the lower extension tube (the short tube). Push the two extension tubes together in until you hear it click into place. (fig. 1)

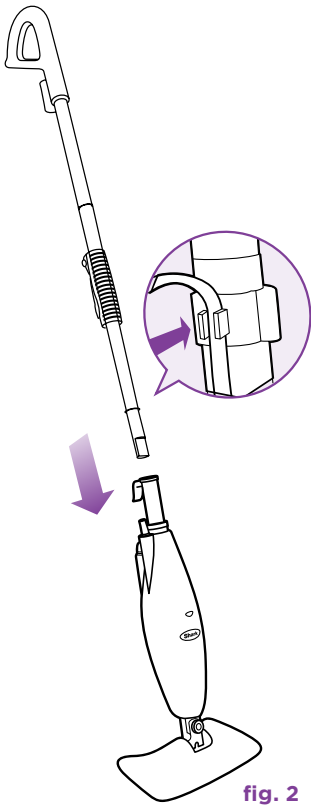


fig. 2

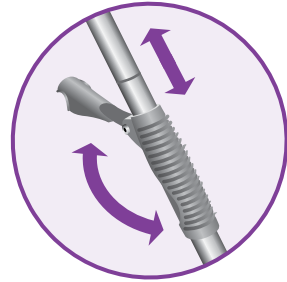


fig. 2

- 3 Insert the assembled handle piece into the steam mop base. Push the tube base together until you hear a click. (fig. 2)
 - 4 For your comfort, you can adjust the height of the mop. Just lift the latch on the tube 90 degrees to the open position. Holding the handle, extend the tube to the desired height and then close the latch to the locked position. (fig. 3)
- ⚠ **QUICK TIP:** For easier pushing and pulling, extend the handle length.

- ⚠ **IMPORTANT:** Never use the **Steam Lite** Steam Mop without attaching a microfibre cleaning pad to avoid damage to your floor and mop.
- ⚠ **IMPORTANT:** Do not use on unsealed wood or unglazed ceramic floors. On surfaces that have been treated with wax or some no wax floors, the sheen may be removed by the heat and steam action. It is always recommended to test an isolated area of the surface to be cleaned before proceeding. We recommend that you check the use and care instructions from the floor manufacturer.

Getting Started

💡 Your microfibre cleaning pads should be replaced every 3 months to maximise cleaning performance.

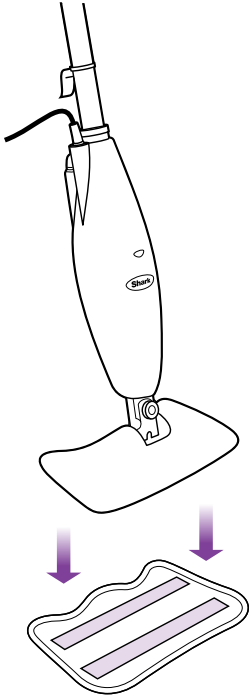


fig. 1

ATTACHING THE MICROFIBRE PAD

- 1 Place the microfibre cleaning pad on the floor with the quick fastener strips facing up. Place the **Steam Lite** Steam Mop on the top of the pad to attach. (fig. 1)

⚠️ **IMPORTANT:** Only add water to the tank. Chemicals or cleaning solutions may be unsafe or cause damage.

⚠️ **IMPORTANT:** Please wait 3-5 minutes for your **Steam Lite** Steam Mop to cool off before removing the microfibre pad.

💡 Calcium and mineral deposits can build up and impact the performance of your steam mop over time. To extend the life of your product we recommend that you use distilled water.



fig. 2

FILLING THE WATER TANK

- ⚠️ **IMPORTANT:** Unplug the **Steam Lite** Steam Mop before filling the water tank with water.
- 1 Remove the water tank cap by turning it counter-clockwise to the unlocked position. (fig. 2)
 - 2 A filling flask is included with your **Steam Lite** Steam Mop to make filling the water tank easy. Fill the flask with water and pour it into the tank. Keep the water level under the MAX' fill line.
 - 3 Replace the water tank cap and turn it clockwise to the locked position.

Using Your Steam Mop

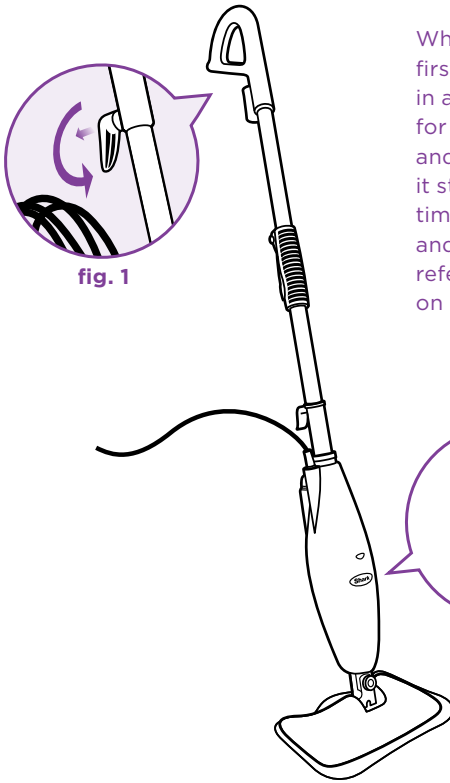


fig. 1

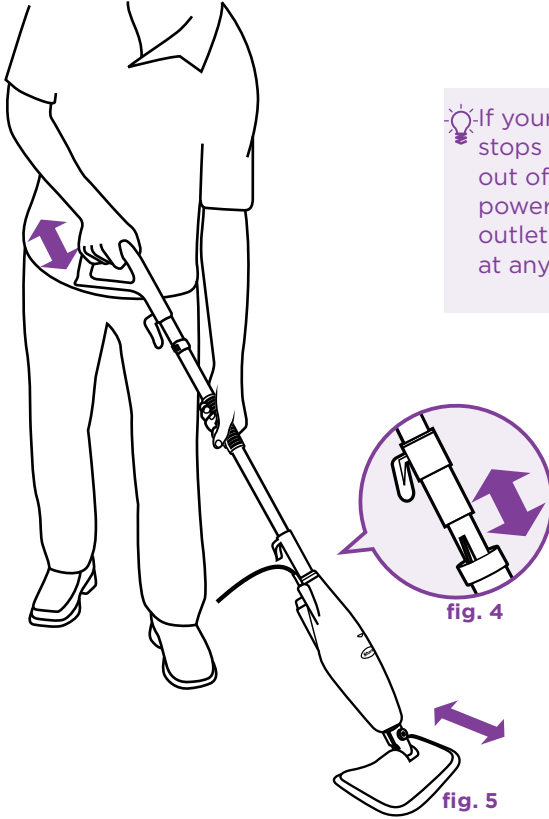
fig. 2

When you use your steam mop for the first time or if you have not used the unit in a while, it may take a minute or two for the water to travel through the pump and into the heater to create steam. Get it started by pumping the handle a few times. If you have waited a few minutes and you still do not see any steam, reference the troubleshooting section on page 9.

IMPORTANT: Your steam mop needs water to make steam! Never use your steam mop without water in the tank. Sweep or vacuum your floors prior to cleaning with your **Steam Lite** Steam Mop.

- 1 Pull and twist the quick release cord holder to unwrap the power cord completely. (**fig. 1**) Plug into an electrical outlet. The “On” light will turn blue. If the light does not turn on, reference the troubleshooting section on page 9. (**fig. 3**)

Using Your Steam Mop - cont.



💡 If your **Steam Lite Steam Mop** stops steaming, it could be out of water. Unplug the power cord from the electrical outlet and refill the water tank at anytime.

2 Wait 30 seconds for the boiler to heat the water. Pump the handle a few times to prime the pump, activate steam and moisten the microfibre pad. (**fig. 4**)

3 Mop with a forward and backward motion to customise steam output automatically. (**fig. 5**)

⚠ IMPORTANT: Never leave the **Steam Lite Steam Mop** with a damp/wet microfibre pad on any floor surface for any amount of time as this may damage the floor.

Care of Your Steam Mop

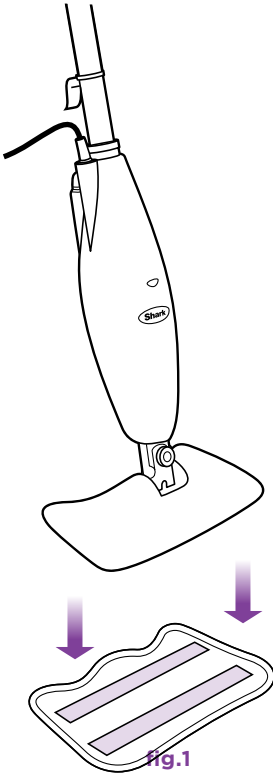


fig.1

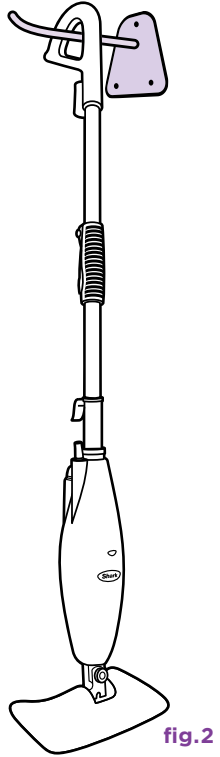


fig.2

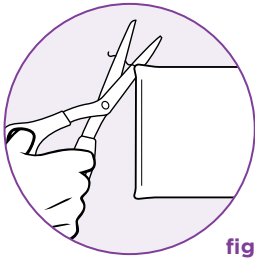
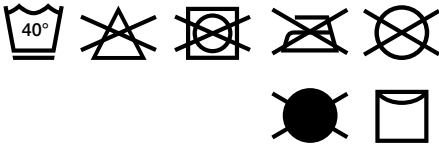
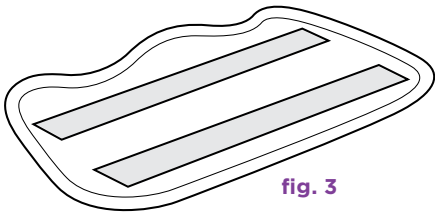
AFTER USE AND STORAGE

- 1 When you have finished using the **Steam Lite** Steam Mop, unplug the cord from the outlet and place the mop into the upright position and let the unit cool 3-5 minutes. Release steam by pumping the handle several times.
- 2 Carefully separate microfibre cleaning pad from steam mop, avoiding contact with the hot pad or dirt. (**fig. 1**)
- 3 Empty the water tank before storage. Remove the water tank cap and empty the tank over a sink. Replace the water cap.

- 4 To store the cooled **Shark® Steam Lite** Steam Mop, hang on a large hook. (**fig. 2**)

NOTE: If you want to store the **Steam Lite** Steam Mop standing upright, make sure it is leaning against a wall for added support and safety. Always store your **Shark® Steam Lite** Steam Mop with the microfibre cleaning pad removed. Store away from children and high traffic areas.

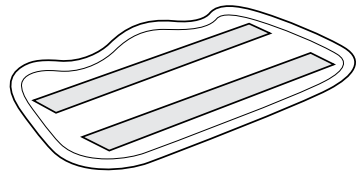
Care of Your Steam Mop



CARE OF YOUR MICROFIBRE CLEANING PADS

- 1 We recommend washing your microfibre cleaning pads separately from other fabrics to avoid picking up lint. **Only use liquid detergent (no powder detergent). Don't use any fabric softeners or bleach.** Line dry. Do not tumble dry. (fig. 3)
- 2 If there are loose threads on the microfibre cleaning pad carefully cut the thread with scissors. Don't pull on them or cut at the base. (fig. 4)

! IMPORTANT: The microfibre cleaning pad may be very hot from the steam. Use caution when removing. Let the unit cool for 2-3 minutes.



ORDERING REPLACEMENT PARTS

To order additional parts and accessories, feel free to contact us at

JML, Unit 1 Eastside
Port of Tyne
South Shields
NE33 5SP
info@JMLgroup.co.uk
Freephone 0800 781 7831

Trouble Shooting

PROBLEM	POSSIBLE REASONS & SOLUTIONS
The Steam Lite Steam Mop will not turn-on.	Your steam-mop should be securely plugged into an electrical outlet only. Check your fuse or breaker.
The Steam Lite Steam Mop will not make steam.	Is there water in the water tank? If not, add water to your steam mop following instructions on page 5.
The Steam Lite Steam Mop leaves water on the floor.	Is your microfibre cleaning pad too wet? Unplug your steam mop and change the microfibre cleaning pad.
The Steam Lite Steam Mop left white spot on the floor.	Do not leave your steam-mop on the floor with a damp or wet cleaning pad. Do you have hard water? If you do, you might want to switch to distilled water. Make sure the water is securely on the water tank.
Floors are cloudy, streaky or spotty after steaming.	The pad might be dirty, change the pad. If you washed the pocket with powder detergent, then the pad may have residual detergent left on it. Wash it again with liquid detergent. If you are cleaning in a kitchen area where there might be a build-up of grease, use a de-greasing agent such as an all-purpose cleaner or dish soap and paper towels to clean the area first. You might have left the mop in the same spot for too long. Do you have hard water? If you do, you might want to switch to distilled water. This might be leftover from past cleaners used on the floor surface. Use the steam mop a few more times and see if the leftover cloudiness is removed.
The Steam Lite Steam Mop is hard to push.	Make sure the steam pad is attached correctly. Check to see if the cleaning pad is excessively dirty. Replace if the pad is too dirty or wet.

JML, Unit 1 Eastside
Port of Tyne
South Shields
NE33 5SP
info@JMLgroup.co.uk
Freephone 0800 781 7831
www.sharkclean.co.uk

Registered address: JML House, NW5 3EG

Technical Details
Model number: S3251UKJR 11
Input: 1550 Watts
Main unit voltage: 220-240V-, 50/60Hz

Printed in China
Illustrations may differ from actual product.
S3251UKJR.E.120911.4

