

Getting Started

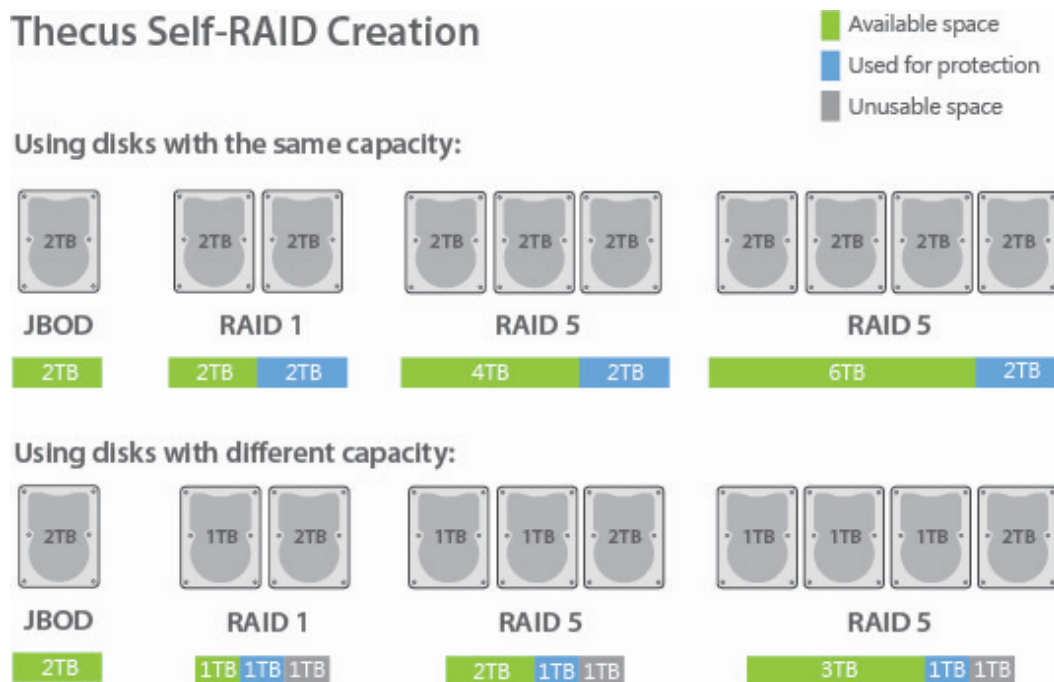
Install, Connect & Use Your Intelligent NAS

❖ Contents

- **Self-RAID Creation and Drive Capacity.3**
- **Quick Installation Guide.4**
- **Install Intelligent NAS.5**
- **After Self-RAID Creation, Set Up Your NAS in 2 Steps. 10**
 - ◆ Step 1. Create Thecus ID..... 10
 - ◆ Step 2. Log into Your NAS..... 12
- **Starting to Use Intelligent NAS..... 13**
 - ◆ One-press Back Up Your External Drive. 13
 - ◆ Other Shared Folders in the NAS..... 14

❖ Self-RAID Creation and Drive Capacity

When it comes to NAS, it is necessary to build a RAID volume so you can use various other functions. Many novice users, however, may not understand the significance of RAID, nor be aware of what kind of RAID mode would be appropriate for every scenario. Intelligent NAS automatically builds a RAID volume, thus ensuring your data's safety. This data protection means that when data on one of your disks is damaged, RAID 1 implement data redundancy which ensures that the transmission and processing of data is never interrupted. However, to take advantage of RAID setups, you must sacrifice some space for these backups. Please see the illustration below for examples of various RAID scenarios.



Tip:
We recommend using disks with the same capacity for the same RAID array. This will ensure that no space is wasted.

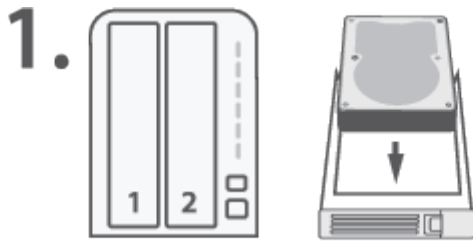
Tip:
Even though some RAID levels and Thecus features offer protection, you should always plan alternative backups for sensitive data.

If you would like to know more about RAID, please go to:

<http://blog.thecus.com/lets-be-ready-for-raid/>

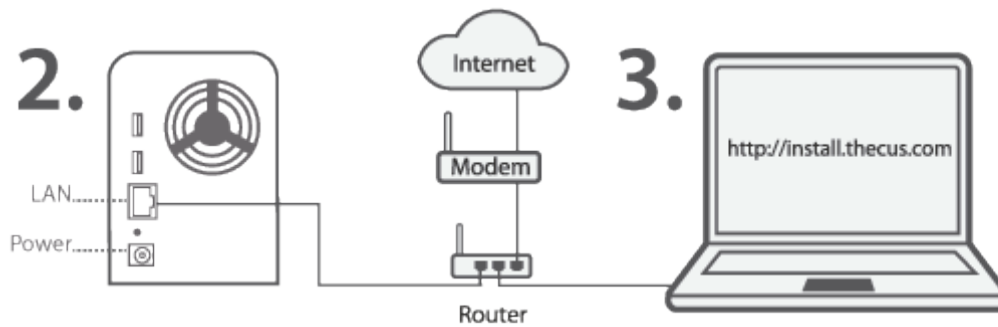
❖ Quick Installation Guide

• N2310



Insert Drive

- Start with 2.5" / 3.5" SATA drives
- **ANY DATA ON THE DRIVE WILL BE ERASED**



Connect Cables

- Connect ethernet
- Attach power
- Switch on the NAS

Online Install

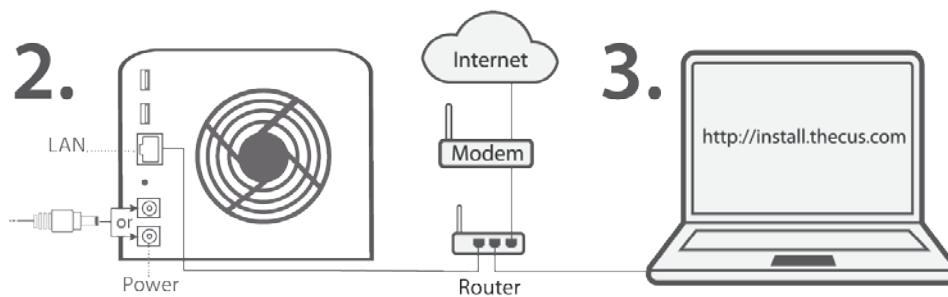
- Use your PC to go to **"<http://install.thecus.com>"**
- Choose a client for your OS (Mac/Windows)

• N4310



Insert Drive

- Start with 2.5" / 3.5" SATA drives
- **ANY DATA ON THE DRIVE WILL BE ERASED**



Connect Cables

- Connect ethernet
- Attach power
- Switch on the NAS

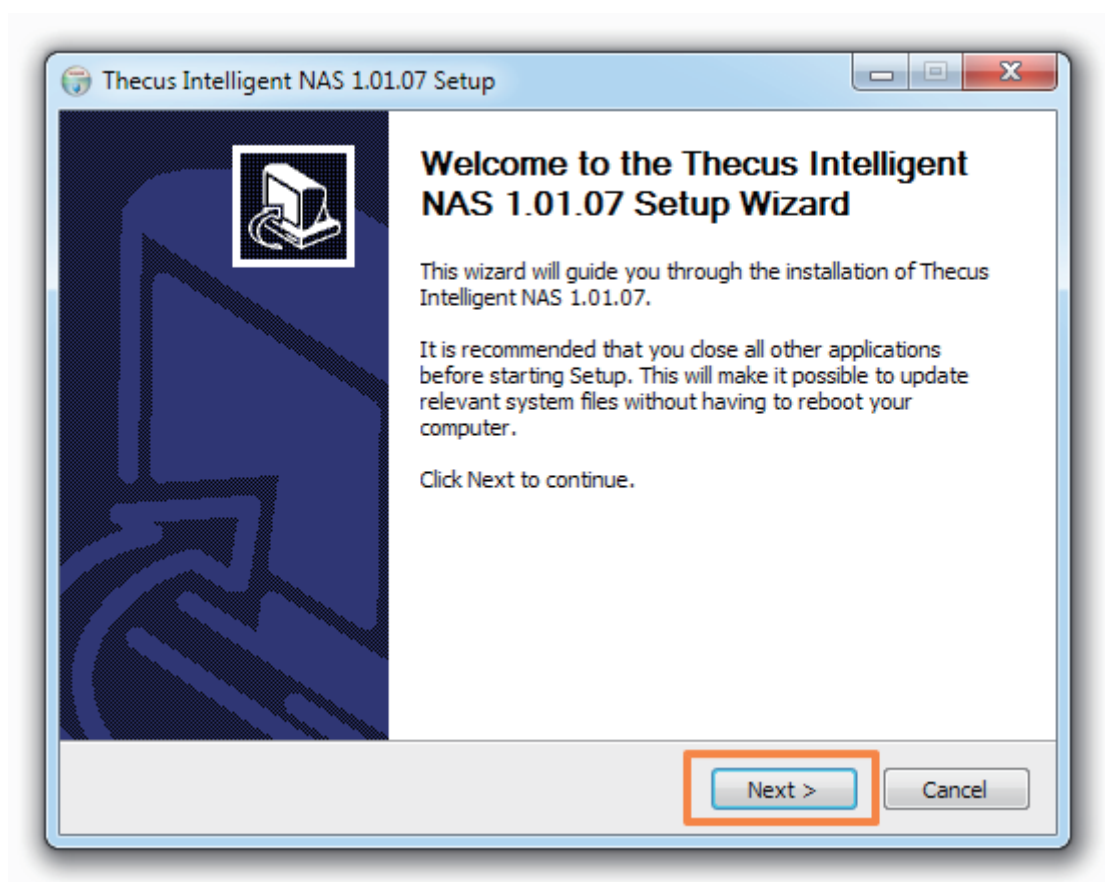
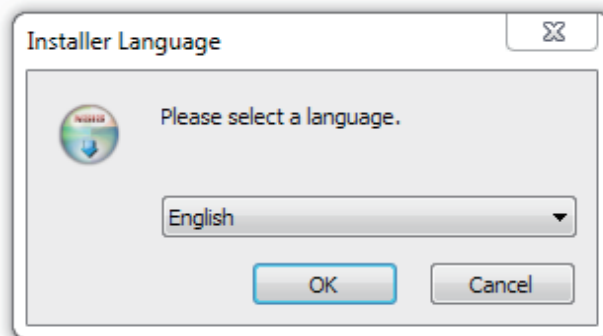
Online Install

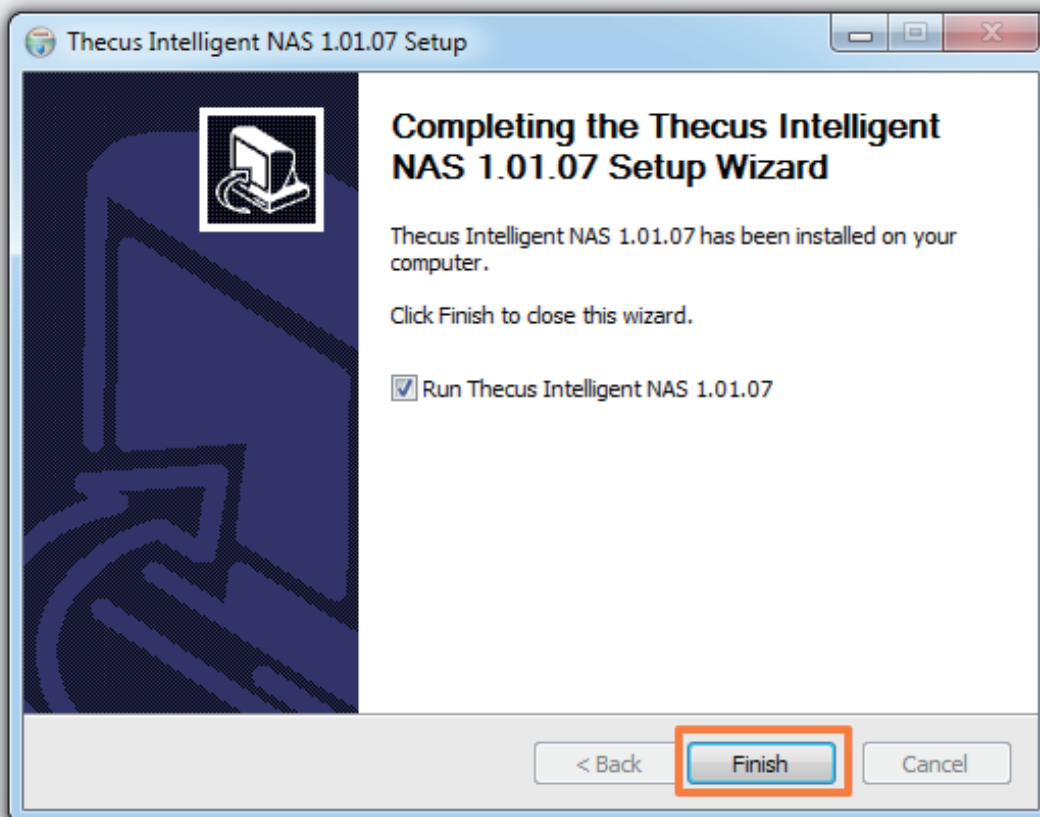
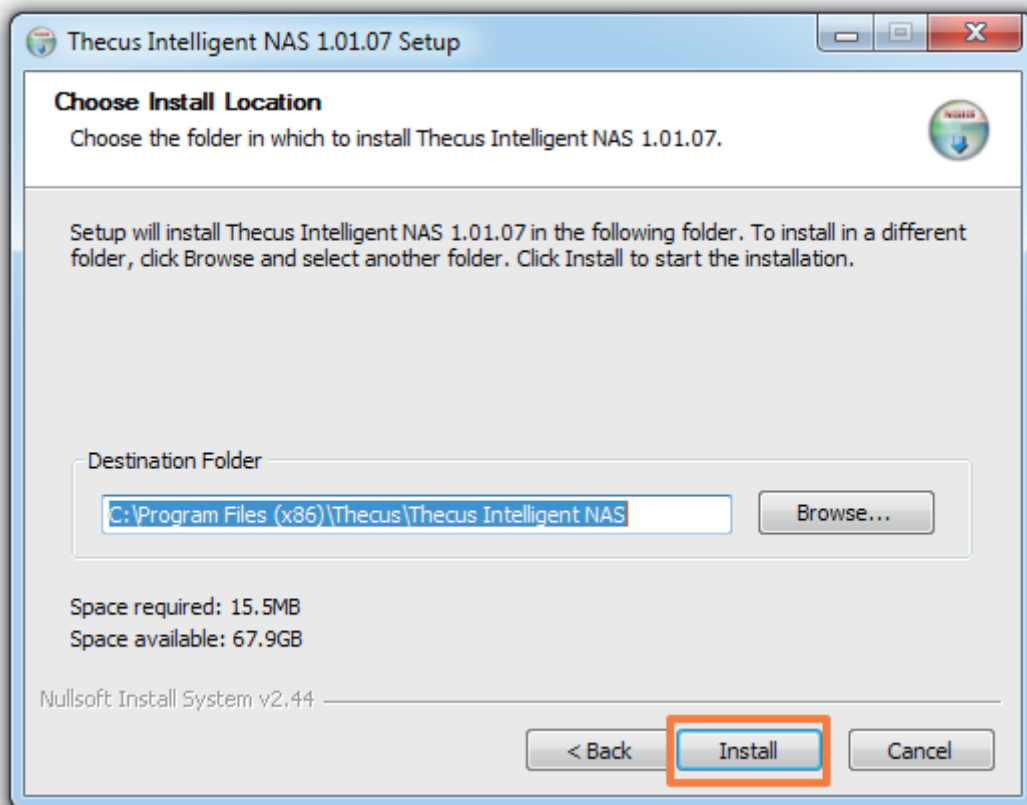
- Use your PC to go to **"<http://install.thecus.com>"**
- Choose a client for your OS

❖ Install Intelligent NAS

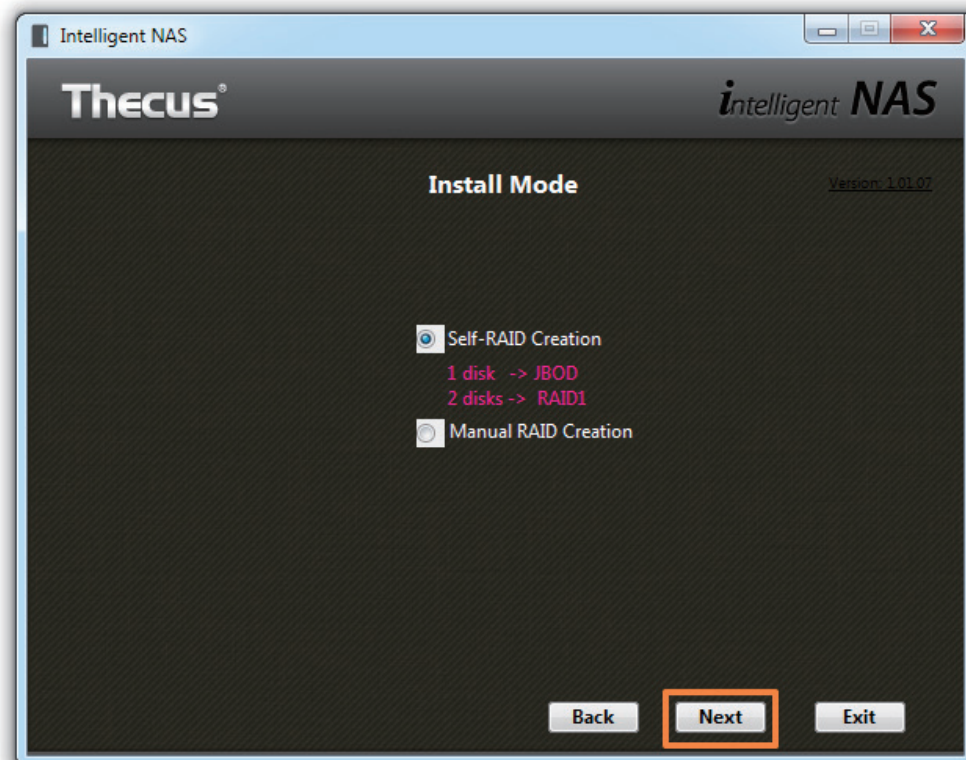
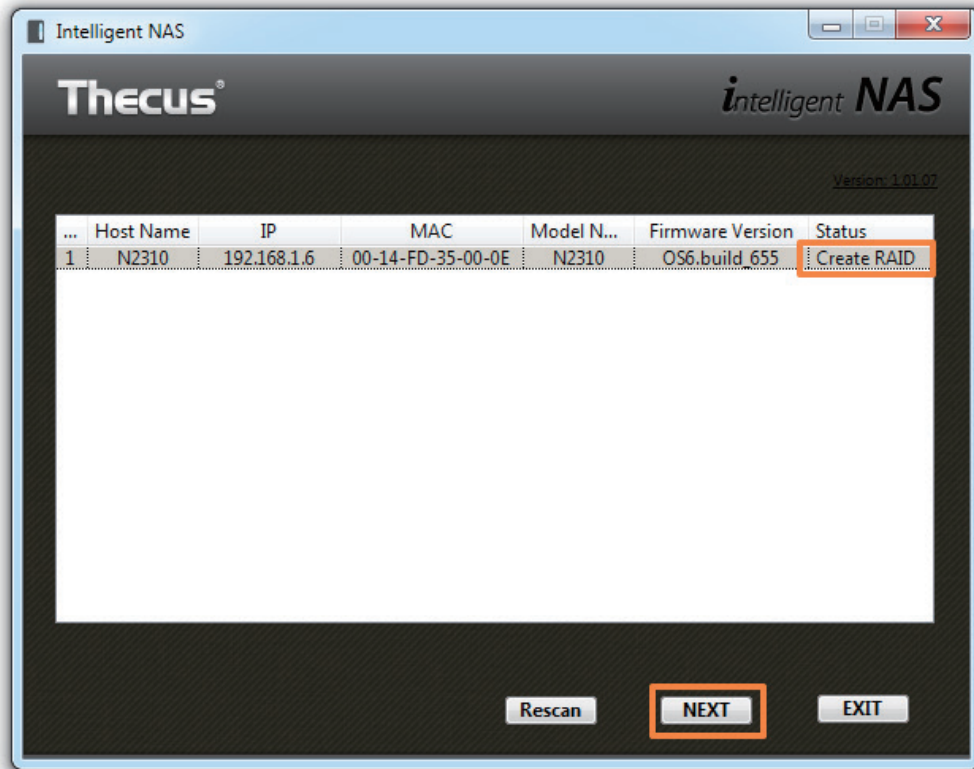
When installing Intelligent NAS, you will be presented with the screens below:

1. Select language version, then click the "OK" button.

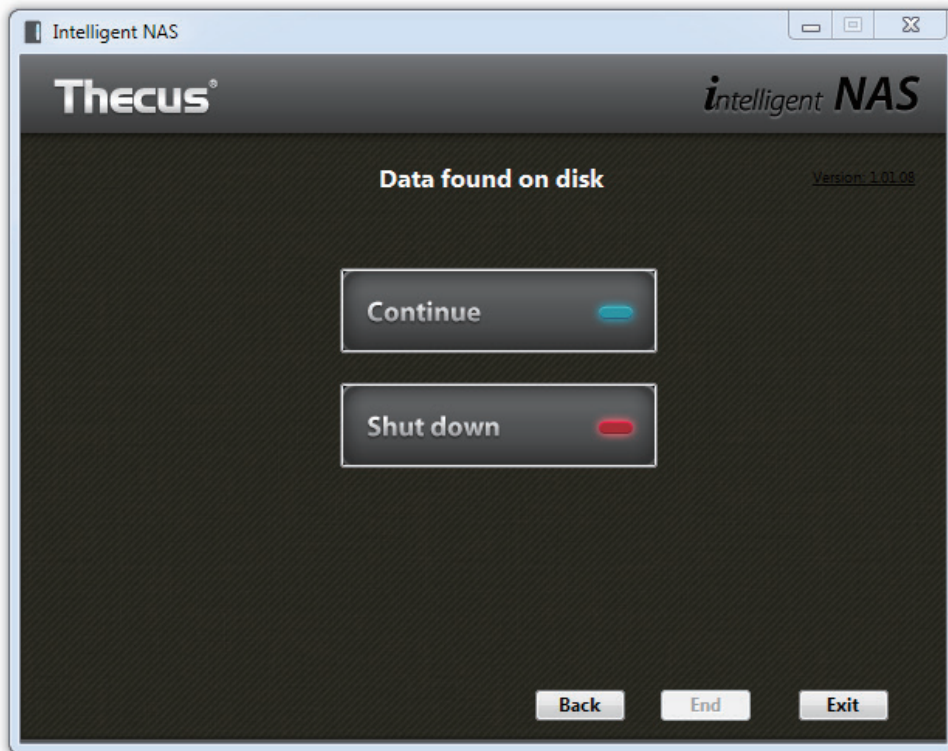




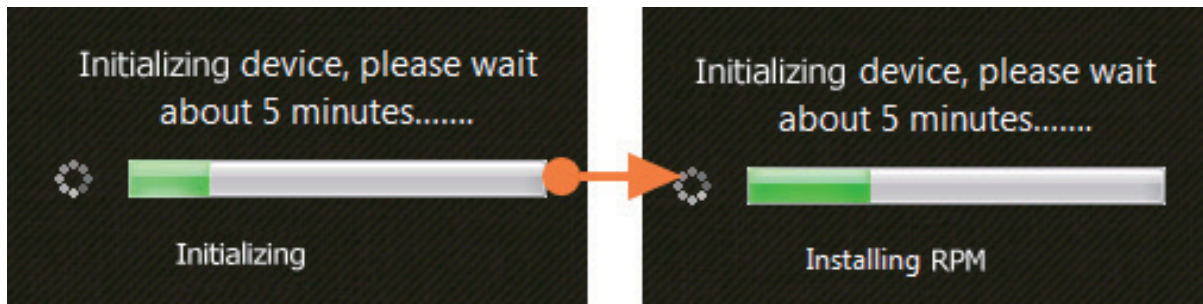
- Intelligent NAS will scan for a N2310/N4310 on your local network and display the results. For new systems, it will show "Create RAID". Select it and click the "NEXT" button. An "Install Mode" window will pop up for you to select "Self-RAID Creation" or "Manual RAID Creation".



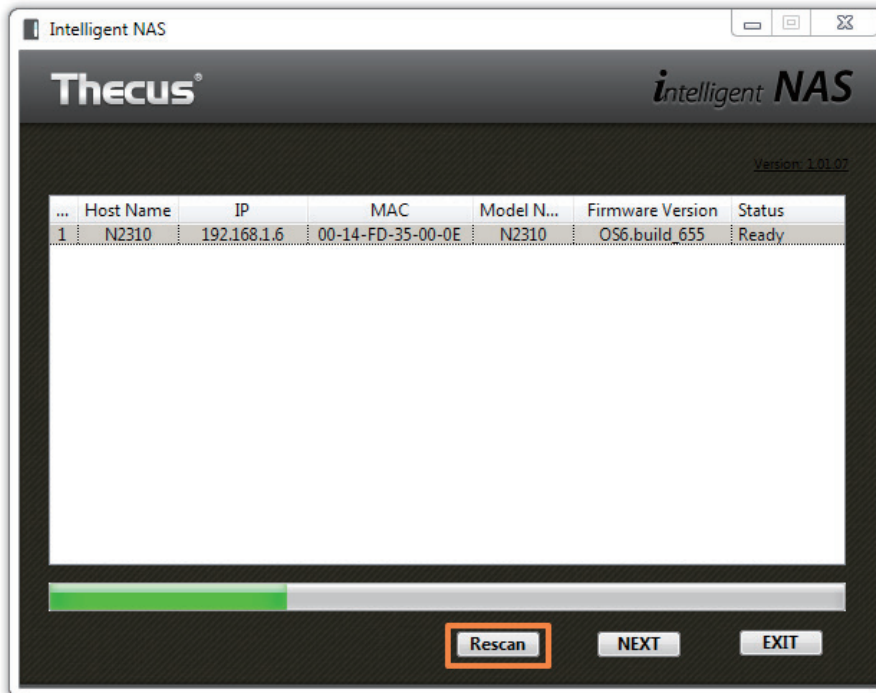
If there is any data on your drives, a "Disk Contains Data" window will pop up and warn you. If you want to continue, select the "Continue" option. Otherwise select "Shutdown" to cease system installation.



During the process, it will display drives' status: "Initializing" and then "Installing RPM". You might need to wait for a few minutes (the time it takes depends on the hard drive capacity, and whether there is data on the drives). When system installation is complete, it will beep and you can click to begin using the device.



Tip:
You may click 'Rescan' and refresh the NAS discovery page.

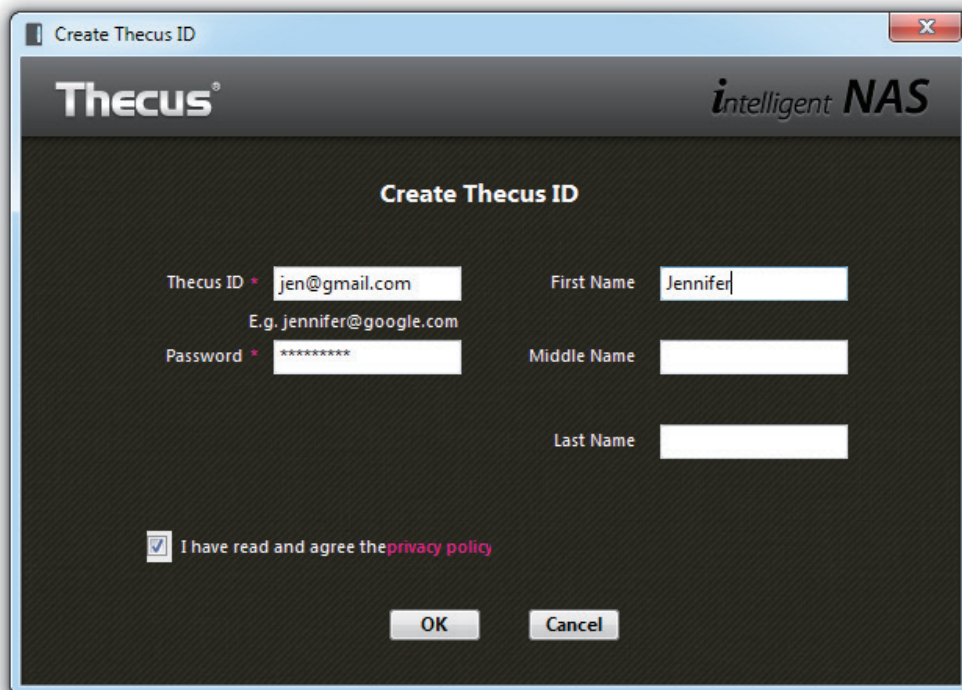
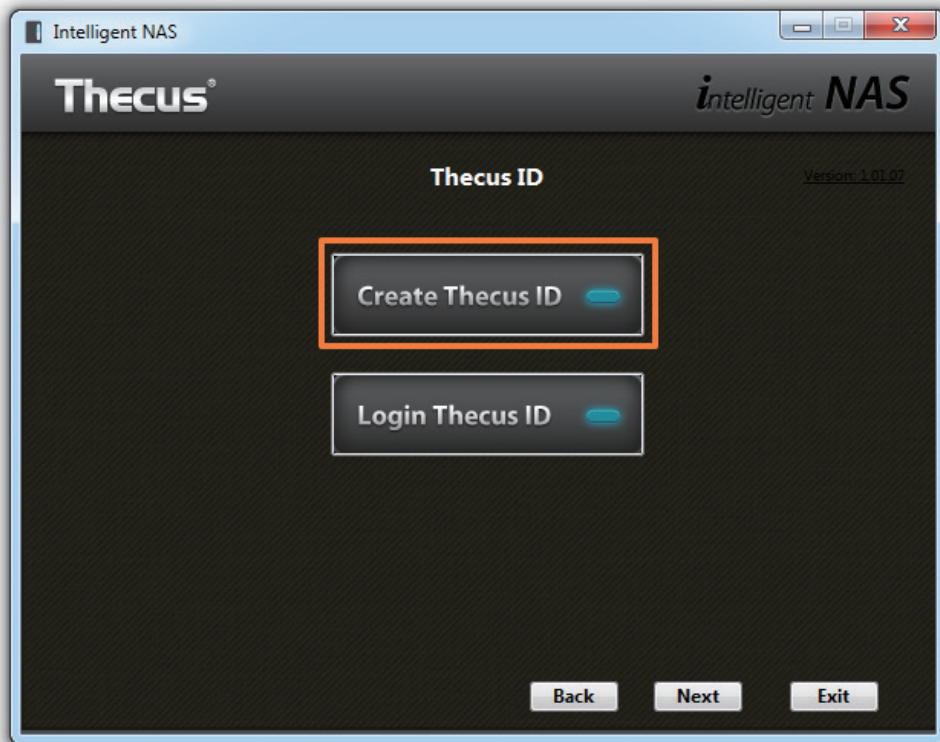


❖ After Self-RAID Creation, Set Up Your NAS in 2 Steps

• Step 1. Create Thecus ID

Register your own Thecus ID and create a free, unique DDNS for your NAS.

Click the "Create Thecus ID" button and enter your email address, desired Thecus ID password and name.



When you create a Thecus ID, you'll receive an email. Click on the link in the email to activate your Thecus ID.

Please activate your Thecus ID!

ddns@thecus.com

收件者: jen@gmail.com

Hi jennifer,

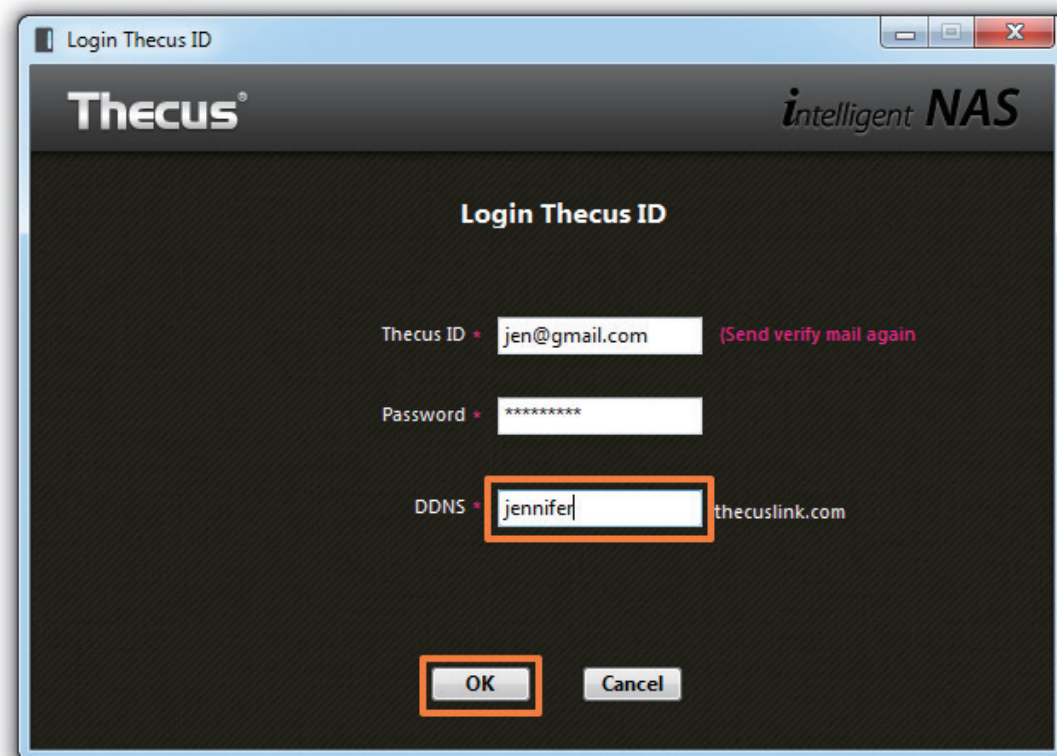
Thank you for registering with Thecus ID!

Your Thecus ID is jen@gmail.com

To activate your account please click the link below:

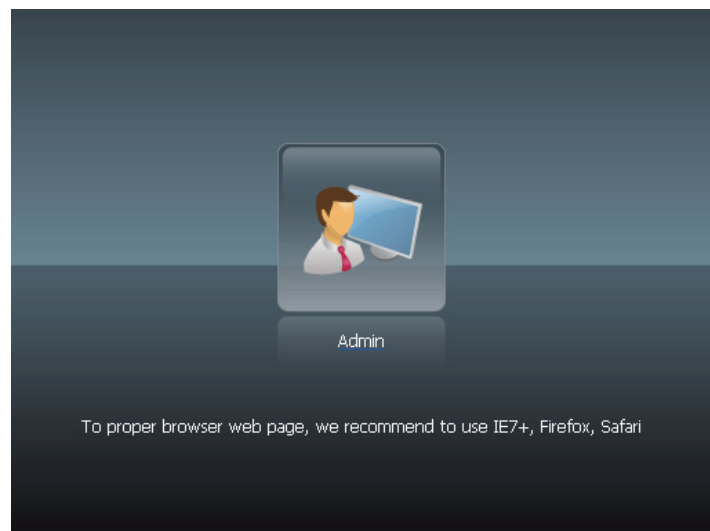
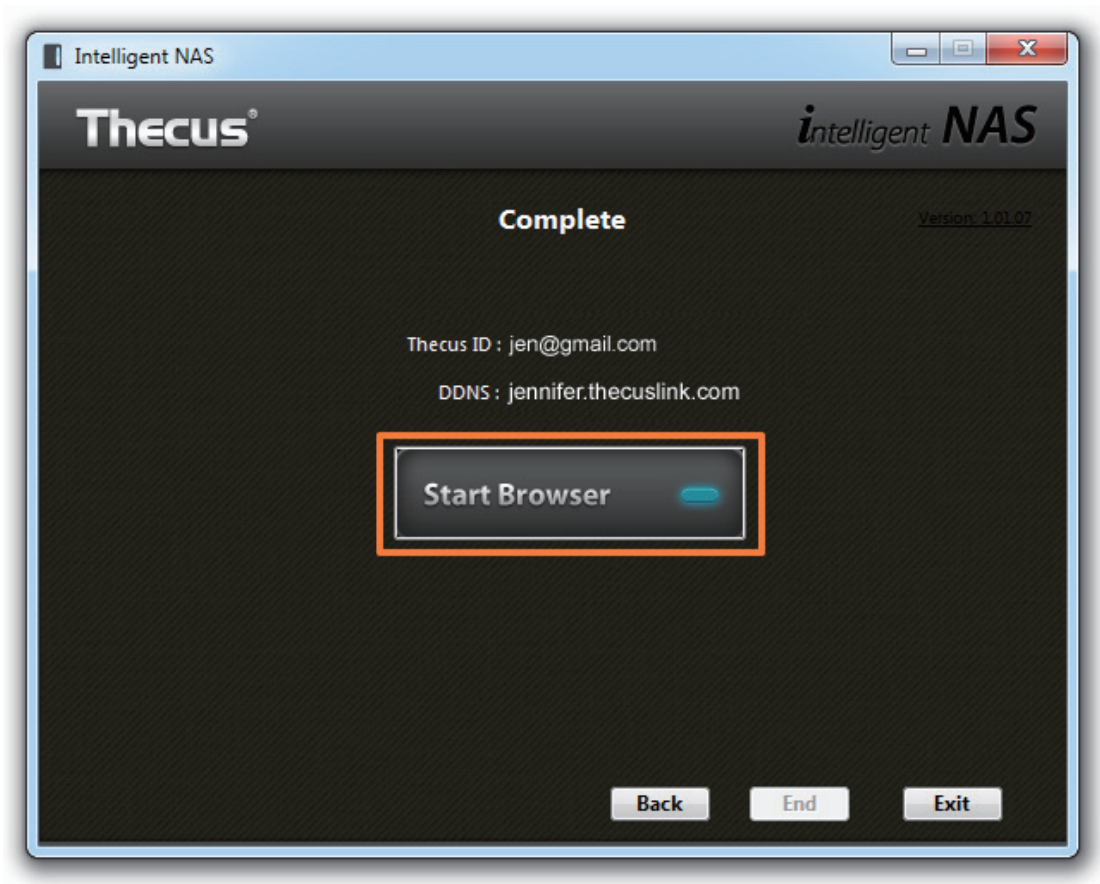
<http://ns1.thecuslink.com:8080/cqi-bin/verify.cgi?email=jen@gmail.com&passwd=5243ebe4ba10054427a15a64ddcf81b5>

Modify the DDNS link and click the "OK" button.



- **Step 2. Log into Your NAS**

Your Thecus® NAS is now ready to use. Take note of your account details. You can then click the “Start Browser” button.



❖ Starting to Use Intelligent NAS

- **One-press Back Up Your External Drive**

Connect your USB drive to the USB 3.0 port. Press the "Copy" button. The "Copy" light will flash. This indicates that the NAS is copying the files.

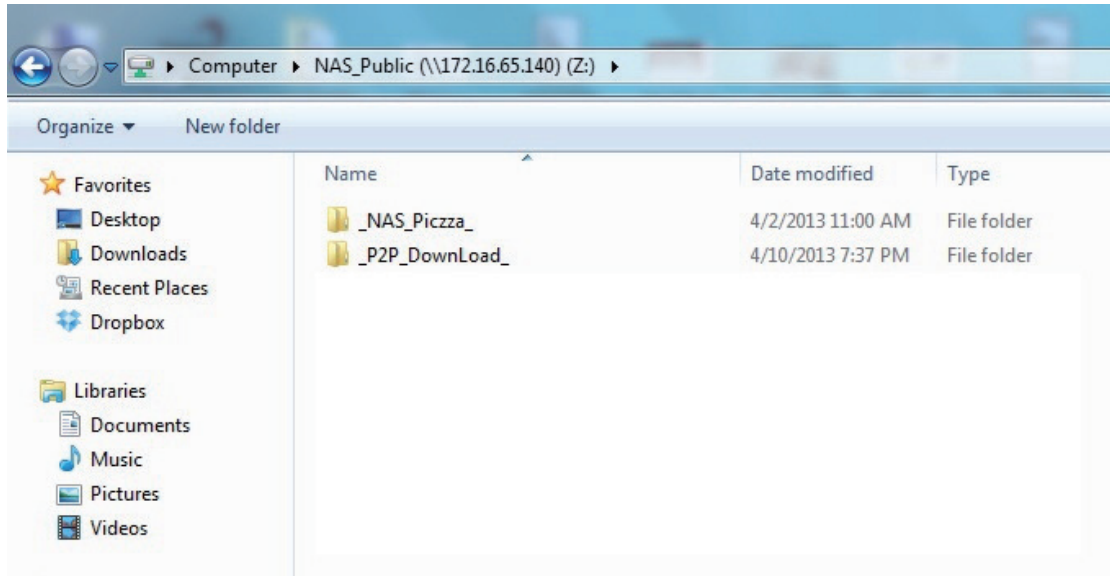


After the "Copy" light stops flashing, the USB drive can be removed.

If later you want to backup the same external drive, any duplicate files on the volume will not be overwritten. Instead, new backups will be generated.

- **Other Shared Folders in the NAS**

- ◆ **_P2P_Download_:** When you use the Intelligent NAS "BT Download" feature, the .torrent and downloaded files will be stored here.
- ◆ **_NAS_Piczza_:** Piczza™ is a photo server provided by Thecus. This is Piczza's root folder.
- ◆ **USB_Copy:** Please see the above section for a description of this folder..



Tip:
Long press the power button for about three seconds. You will hear a beep and the power light will start to blink indicating that the device has entered the shutdown procedure. You can then release the power button.
The time required to fully power off the device will depend on system conditions such as what hard drives are installed and what system data protection measures are in place.