

User Manual

Verbatim MediaShare™ Wireless for Kindle Fire

Version 1.02



Table of Contents

TABLE OF CONTENTS	2	SETTINGS MENU	9
ABOUT THIS MANUAL	3	MyMediaShare Settings	9
PRODUCT OVERVIEW	3	Wi-Fi and LAN Settings	9
PRODUCT FEATURES	3	Internet Settings	10
OPERATING MODES	3	Clear Cache Button	11
PRODUCT SPECIFICATIONS	3	EXITING THE MEDIASHARE APP	11
SYSTEM REQUIREMENTS	3	GETTING HELP	11
PRODUCT VIEW	4	LIMITED WARRANTY TERMS	12
CHARGING MEDIASHARE	4	FCC COMPLIANCE	12
INSTALLING STORAGE DEVICES	4	CE COMPLIANCE DECLARATION	12
SD Memory Card	4	CANADA IC RSS-210:2010	12
USB External Storage	4	WEEE NOTICE	12
USING MOBILE DEVICES	5	RIGHTS	12
INSTALLING THE APP	5	LICENSING INFORMATION	13
WIRELESSLY CONNECTING YOUR KINDLE FIRE TABLET	5	AVAILABILITY OF SOURCE CODE	13
LAUNCHING THE APP	6	GNU GENERAL PUBLIC LICENSE	14
BASIC FUNCTIONALITY	6	GNU LESSER GENERAL PUBLIC LICENSE	15
Playing Music	7	FREEBSD LICENCE	18
Playing Video	7	MIT LICENCE	19
Viewing Photos	8		
Sharing Photos	8		
Viewing Documents	8		
MANAGE MODE	8		
Copy and Delete Functions	8		

About This Manual

This manual describes how to use the Verbatim MediaShare Wireless SD/USB device with your Kindle Fire tablet. If you instead want to use the MediaShare Wireless SD/USB device with an iOS/Android smartphone or tablet, please download the user manual for “MediaShare Wireless for iOS” or “MediaShare Wireless for Android”.

Product Overview

The Verbatim portable MediaShare Wireless SD/USB device allows you to use SD memory cards and USB external storage devices as Wi-Fi accessible media. Simply insert your SD memory card into the SD slot or connect your USB external storage into the built-in USB port. Power on the unit and you can now wirelessly access your videos, music, photos, data and stream them to your Kindle Fire, iPad®, iPhone®, Android™ tablets and smartphones. There is no need to worry about running out of space on your mobile devices.

For maximum portability, MediaShare has a built-in rechargeable battery. Plug it into any available USB port on your computer to charge the battery.

Product Features

- Supports SDXC, SDHC and SD memory cards up to 128GB. SD adapter is needed for MicroSD and MiniSD.
- Supports USB storage devices
- Stream media to up to 5 Wi-Fi-connected users simultaneously*
- Access and stream your music, videos, photos and data from an SD memory card or from USB external storage using the free custom mobile app supporting iOS, Android and Kindle Fire operating systems
- Built-in micro USB port for charging and data transfer function
- Up to 9 Hours of continuous battery life**
- In power off mode, able to charge your other portable electronic devices through MediaShare’s USB host port.
- Search function to locate and access your files
- Internet access capability via wireless, supporting 802.11 b/g/n speeds
- Support multiple platform client tools, including Kindle Fire/iPad/iPhone/Android

* Streaming performance limited by Wi-Fi bandwidth, encoded file data rate, and player buffering capability.
 **Battery life subject to normal usage conditions and configurations.

Operating Modes

There are three main operating modes.

1. Direct USB Connection. Connect the device to

your computer’s USB port using the provided USB cable. The device will automatically mount on your desktop or in “My Computer”. In this mode the battery of MediaShare will charge, and you can transfer files between your computer and either an installed SD memory card, or an installed USB drive.

2. Wireless Connection. Power on the device and use your mobile device to search for available wireless connections. Stream music or videos that you have previously saved to an SD card or flash drive.
3. Wireless Internet Bridge mode. After enabling the Internet Bridge feature, wirelessly connect MediaShare to your existing wireless router to have internet access.

Product Specifications

Product Dimensions: 112mm X 78mm X 14mm

Wi-Fi Radio:

Standard: 802.11 b/g/n

Frequency: 2.4 GHZ

Speed: 72Mbps at 20MHz / 150Mbps at 40MHz

Wi-Fi Security:

WPA-PSK

WPA2-PSK

Mixed WPA/WPA2-PSK (default)

Disabled

USB 2.0 Device Port: For data transfer and charging

Battery:

3000 mAh capacity

Charges via USB micro-B port

Charging time up to 7 hours

Regulatory Certifications:

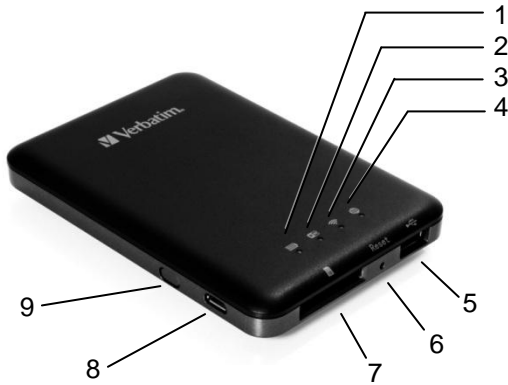
FCC (Class B), CE, IC RSS-210:2010 (Canada),

CEC-2012-BCS (California, Battery Charger Efficiency Requirement)

System Requirements

- Internet Connection (for downloading app and user manual, and for use with optional Internet Bridge feature)
- MediaShare Wireless Kindle Fire app (available for free download from the Amazon Appstore)
- Requires attached storage device (1GB minimum): SD card (Class 4 or higher) or USB flash drive or USB hard drive
- 200MB available storage on your installed SD card or USB storage device reserved for system functions and therefore not available for user data.
- Kindle Fire, Kindle Fire HD or Kindle Fire HDX

Product View



Charging MediaShare

Using the supplied cable connect MediaShare to a powered USB port or USB charger in order to charge the built in battery. It may take up to 7 hours to fully charge the battery.

Installing Storage Devices

MediaShare contains no internal storage. You must attach either an SD Card or a USB storage device before you are able to use MediaShare with your smartphone or table.

Once your SD Card or USB storage device is attached, MediaShare will reserve up to 200MB of its capacity for temporary files and other system functions. Therefore this space is not available for user data.

MediaShare supports storage devices using FAT, FAT32, exFAT (for SDXC), or NTFS file systems.



Note: Prior to installing the SD Memory Card or USB Device, make sure MediaShare Wireless is turned off.






Do not touch the exposed connectors on your SD Memory card.

SD Memory Card

Locate the SD memory card slot. Insert the memory card. Gently push the memory card all the way in until it locks into its place.

USB External Storage

Locate the USB host port on the device. Insert a USB drive or portable hard drive cable into the USB port

COMPONENT	DESCRIPTION
1. Battery Level LED 	<ul style="list-style-type: none"> Green ON: The battery charge level is more than 30%. Red ON: The battery charge level is between 10% and 30%. Red Fast Flashing: The battery charge is depleted and the unit will soon shut down. Green Slow Flash (every 2 seconds): The battery is charging. Green Slow Flash (every 1.5 seconds): The device is shutting down. LED off: The device is powered off.
2. Read / Write LED 	During Wi-Fi disk mode: <ul style="list-style-type: none"> Blue ON: Memory connection is successful. Blue Flashing: Memory is reading or writing. During cabled connection mode: <ul style="list-style-type: none"> Blue ON: Connected to a USB host Blue Flashing: Connected to USB2.0 and is reading or writing.
3. Wi-Fi LED 	Blue LED shows the Wi-Fi connection state. <ul style="list-style-type: none"> Flashing indicates that initiation is in process. ON indicates Wi-Fi initiation has completed. The LED is OFF when: <ul style="list-style-type: none"> Device is on, but the Wi-Fi signal is weak. Device is off. Device is in Mobile Mode but the Wi-Fi is off.
4. Internet LED 	<ul style="list-style-type: none"> Green: Connected to the internet via the bridge. Off: Not connected to the Internet.
5. USB Host Port	<ul style="list-style-type: none"> Insert a USB flash drive or USB hard drive for Wi-Fi access. In Power Off mode USB port can be used to charge connected smartphone or tablet.
6. Reset Button	Insert a small tool (such as a paperclip) to press the button and reset the device to Factory Default configuration.
7. SD Card Slot 	Insert SD card for Wi-Fi access. Insert microSD card using appropriate adapter.
8. USB Device Port	<ul style="list-style-type: none"> Use the included USB cable to connect to a computer over USB 2.0 to enable data transfer. Use the included USB cable to connect to a USB port or USB charging adaptor to charge the device.
9. Power Button	Turns the device on/off.

Using Mobile Devices

Installing the App

Power on your Kindle Fire tablet and ensure that it is connected to the [Internet](#). From the carousel screen select “Apps”



Then select “Store” to take you to the Amazon Appstore



Search and locate the free “MediaShare Wireless” app, click on “Install” and follow the on-screen installation instructions. Once the installation process has been completed, the “MediaShare Wireless” app icon can be found on the desktop.



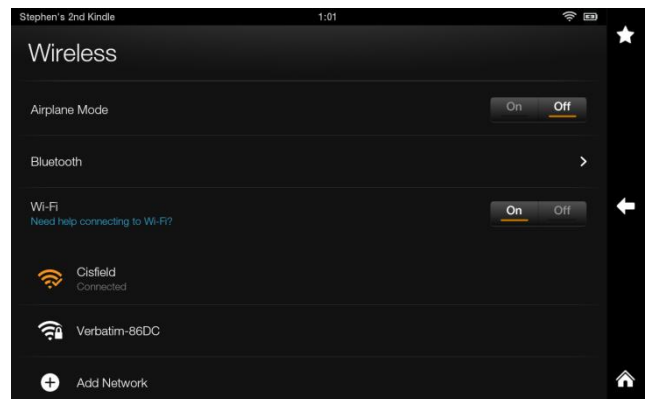
Wirelessly Connecting Your Kindle Fire Tablet

1. Turn-on MediaShare [Wireless](#) and wait for it to initialize. The blue Wi-Fi LED on the device should transition from blinking to fully ON to indicate that the initialization process has been completed.

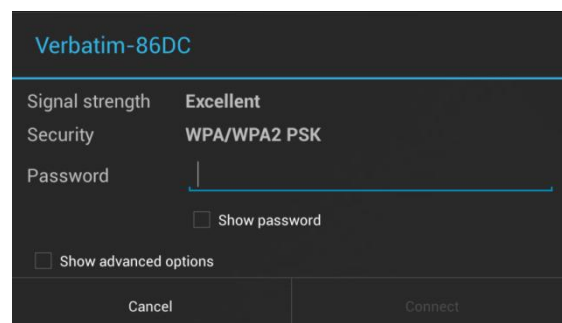
2. From the menu screen click on “Wireless”



3. Under “Wireless” make sure “Wi-Fi” is set to “On” click on “Wi-Fi”. The SSID option for “Verbatim-XXXX” should appear in the list. (For example, click on “Verbatim-86DC”, as shown in the screen below. The “86DC” part of the SSID is the last 4 characters of the device MAC Address.)



When “Verbatim-XXXX” is selected for the first time you will be prompted for the Wi-Fi password. **The default password is printed on the bottom label of your device.**



After the correct password is entered, the product will show as “Connected” in the list.

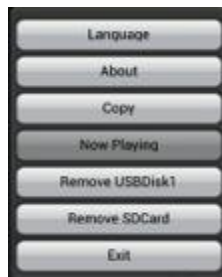
Launching the App

On your Kindle Fire click on the “MediaShare” icon to launch the app.

The home screen is presented as below. The screen will show folders/files for the selected device (either MediaShare or smartphone/tablet). You can toggle between these two device views by clicking on “MyMediaShare” or “My Device”.



At the lower right you will find the 3-dot menu button. [When selected, this](#) menu presents the following options:



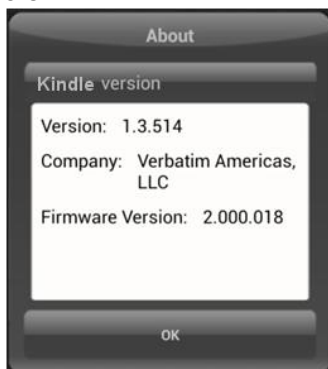
Language

The language normally defaults to that of your Kindle Fire tablet at the time of installation. If you later want to select a different language, you can make a selection from this menu. The following languages are supported.

- English
- Italian
- Spanish
- Croatian
- Hungarian
- Russian
- Traditional Chinese
- Simplified Chinese
- French
- German
- Portuguese
- Czech
- Polish
- Serbian
- Korean

About

The About button lists the firmware and app version numbers:



Copy

Click the Copy button to view the file transfer status.

Now Playing

When songs are playing in the background, you can select the Now Playing button to see information about the current song.

Remove USBDisk1

A currently mounted USBDisk volume can be safely unmounted using the Remove USBDisk1 button.

Remove SDCard

A currently mounted SDCard volume can be safely unmounted using the Remove SDCard button.

Exit

Pressing the Exit button is one way to close the app.

Basic Functionality

The action buttons for MyMediaShare can be found at the top of the screen and are listed below.



Home Button – back to the main screen.



View Button - change to List or Thumbnail view.



Settings Button – change the MediaShare configuration.



Back Button – back to previous screen



Manage Button – file manager to share, copy, delete, and transfer files



Search Box – to search for a specific file name and/or extension.



3-dot Menu Button – to view the menu list for the following selections: About, Language, Copy, Now Playing, Remove USBDisk1, Remove SDCard, Exit.

Playing Music



Tip: We recommend that you create a folder or folders for saving all your music files for ease of use and file organization

Music or audio files can be played whether you are inside "MyMediaShare" or "My Device". Simply locate the music or audio file that you would like to play. Click on the file and your music will automatically play.



Note: Please consult your Android mobile device manual to check whether it will support the music/audio files that you would like to play

Use the following icons to control music playback:



When clicked, the current music that is playing will restart at 0.00. When double-clicked, it will play the previous music.



When clicked, it will play the next music file.



When clicked, it will start playing the music or audio file.



When clicked, the will pause/stop playing the music.

There are five play modes:



1. Repeat all songs: the music or audio files will be played in sequence, and it will only stop playing when the pause button is clicked. (Default Mode)



2. Play current song: the current music that is playing will be stopped, and playing progress will return back to 0.00.



3. Repeat current song: the player will always play the current song, and it will only stop playing when the pause button is clicked.



4. Shuffle all songs: the music or audio files will be played randomly.



5. Play current list: the music or audio files will be played sequentially.



Tip: You can click and hold then slide music progress button to fast-forward or rewind the music



Tip: You can exit Music Player Interface at any time and the music will continue to play in the background

Playing Video



Tip: We recommend that you create a folder or folders for saving all your movie files for ease of use and file organization

Movie or video files can be played whether you are in "MyMediaShare" or "My Device". Simply locate the movie or video file that you would like to play. Click on the file and the list of installed movie players will appear.



Note: Please consult your Kindle Fire manual and video player application manual for supported video encoding methods and file types, and for a description of the player control panel

The player control panel will vary depending on the installed movie player you have selected.

Playback performance depends on your Kindle Fire device, your selected video player, your player's settings, the data rate of your encoded video file, the strength of your Wi-Fi connection, and the number of simultaneous users. If the video plays, but momentarily freezes on playback, then you can try these steps to improve video playback performance:

- 1) Copy the video file to your tablet and initiate playback from the tablet.
- 2) Reduce the number of simultaneous streaming users.
- 3) Re-encode the video file to a lower data rate and/or use a different encoder.

- 4) Select or install a different video player.
- 5) Check the settings of your video player.

Viewing Photos



Tip: We recommend that you create a folder or folders for saving all your pictures for ease of use and file organization



Note: MediaShare Wireless currently supports .jpg, .tif, .gif and .bmp image files.

The supported images can be viewed as thumbnails or as a filename list. Any images that are not supported can be viewed as a generic thumbnail or icon.

Click on a picture thumbnail or picture filename to open and view it. Click on the displayed picture to access action buttons at the top of the screen as shown here:



Click the Play button to initiate a slide show, which will slowly cycle through every picture in the current folder.



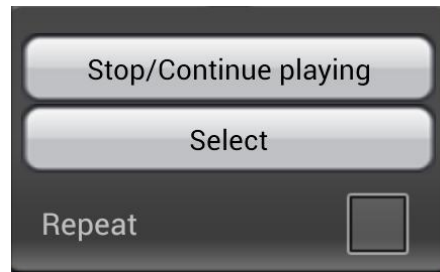
Click the Pause button to pause the slide show. Click again to resume the slide show.



Click the Repeat button to restart or to replay the slide show.



Click the Music button to select and play background music with your displayed picture or slide show.



Click the Back button to return to the previous screen.

Sharing Photos

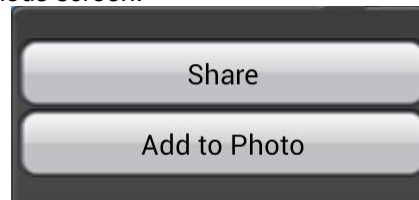
Sharing photos using your Kindle Fire device will vary depending on the apps installed on your device.



Note: Internet connection is required to share photos via email or accessing any social media network





Click on the Share button located at the top right of the screen to show the options available to share your photos. Click the return button to return to the previous screen.



Viewing Documents

To open/view a document using your Kindle Fire, simply click on the file that you wish to open/view. This will automatically open the file using the default viewer or the installed app on your Kindle Fire.

Manage Mode

You may click on the Manage button  at any time to enter the File Manage mode to share, copy, delete, and transfer files. To exit the Manage mode click the Exit button .

To manage files on MediaShare, enter Manage mode from "MyMediaShare".

To manage files on your tablet, enter Manage mode from "My Device".

Copy and Delete Functions

Once in Manage Mode you will see new icons at the bottom of the screen. See below for their functions.



Click the Select All button to select all files. A blue check mark will appear on every file. Click again to deselect all files.



Tip: you may select a single file or multiple files by clicking on the thumbnail. Also, you may click and hold the thumbnail and drag it to a lower icon to copy or delete a file or files



Copy Files or Folders. When entering Manage Mode from MyMediaShare, the copy function will copy a file **from** MediaShare **to** the tablet. The copy icon contains a downward arrow.



Copy Files or Folders. When entering Manage Mode from My Device, the copy function will copy a file **from** your tablet **to** MediaShare. The copy icon contains an upward arrow.

When copying files, you need to define the destination folder. A new folder may be created if desired. To create a new folder, simply click on the “New Folder” button. Enter the new folder name and click the “Create” button. The folder name can be from 2 to 26 characters.



You may click on the Status icon to see the list of files that are in queue for transfer, as well as the list of files that have already been copied successfully.



To delete all selected files, click on the trash icon.



Note: Successfully copied/transferred files will be listed in the “recent” window. Click “Clear” to remove the history

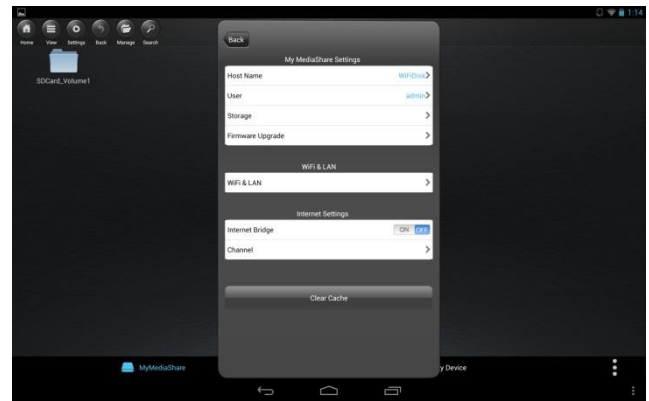


3-dot Menu Button. You may also click on the on the Copy button of the main screen 3-dot menu to check on the status.

Settings Menu



From within MyMediaShare, you may access various configuration operations by clicking on the Settings icon.



MyMediaShare Settings

Host Name

<Reserved for future functionality.>

User

<Reserved for future functionality.>

Storage

You may attach an SD memory card or a USB storage device to MediaShare to serve as local storage. Click on “Storage” to view the type, size, and remaining available storage for each installed memory device.

Firmware Upgrade

Please visit the Verbatim support web site periodically to see if a new firmware file is posted for this product. If a new firmware file is available you may download it and install it as follows:



Note: Before attempting a Firmware Upgrade, ensure that the batteries of your MediaShare Wireless and Kindle Fire are fully charged

- 1) Save the new file to the root directory of an SD memory card or USB storage device.
- 2) Attach the above storage device to your MediaShare and then power up MediaShare.
- 3) Establish a wireless connection between your tablet and MediaShare.
- 4) Open the MediaShare app and navigate to the Settings screen.
- 5) Click “Firmware Upgrade”. The new firmware file will be installed. As your MediaShare reboots you will temporarily lose Wi-Fi connection to your tablet.

Wi-Fi and LAN Settings

Device Name

To change your device name (SSID) from the default name of “Verbatim-XXXX”, enter a new name in the dialogue box provided. Characters may be any combination of letters and numbers, up to a maximum length of 32.

Security Options

The factory default setting for wireless security is Mixed WPA/WPA2-PSK. The unique default password is printed on the bottom label of the product. With this dialogue you may change the password, or

alternatively set the wireless security to WPA-PSK, WPA2-PSK, or to Disabled (ie. no password required).

The password must be at least 8 characters, but no more than 63 characters.

If you change the password, and later forget your new password, you can return to the factory security setting by performing a reset using the side panel reset button.

Mode

The factory default setting for wireless communication mode is 802.11b/g/n. With this dialogue you may alternatively set the communication mode to 802.11b, 802.11g, or 802.11.n.

LAN

This dialogue will display the fixed MAC address of the product. Alternatively, you may view or change the current IP address and Subnet Mask.

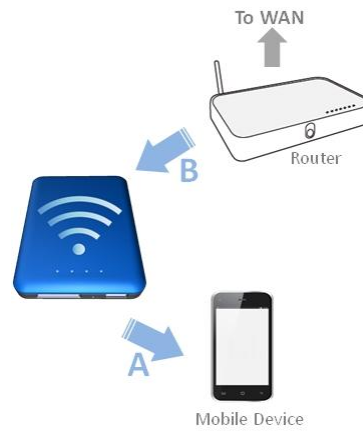
Internet Settings

This product's normal operation requires only a single wireless connection between your tablet and MediaShare. To make this connection, MediaShare defines the Wi-Fi channel to use (from 1-11). The factory default setting for channel selection is "auto", which allows MediaShare to automatically choose the best channel based on current environment channel clarity. The connection is sketched below as connection "A".



However, in this mode, if you later want to browse the internet with your tablet, you must break the "A" connection and instead connect your tablet with an available router.

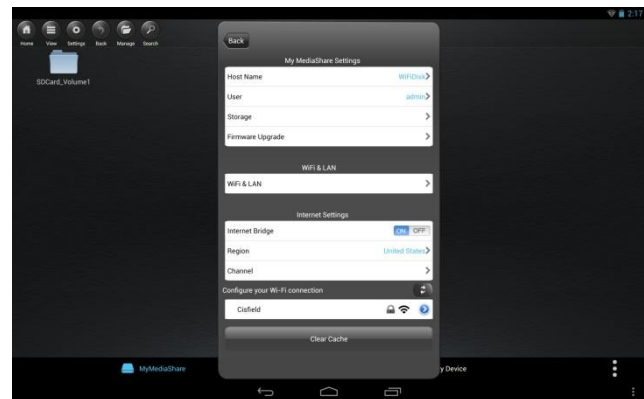
As a convenience, this situation can be avoided by enabling the bridge function on MediaShare. In the internet bridge mode, sketched below, you may keep a connection to the tablet, plus allow the tablet to reach the internet (albeit at limited connection speeds). In this mode, the Router now defines the Wi-Fi channel, and two Wi-Fi connections are established ("A" and "B") using this same channel number.



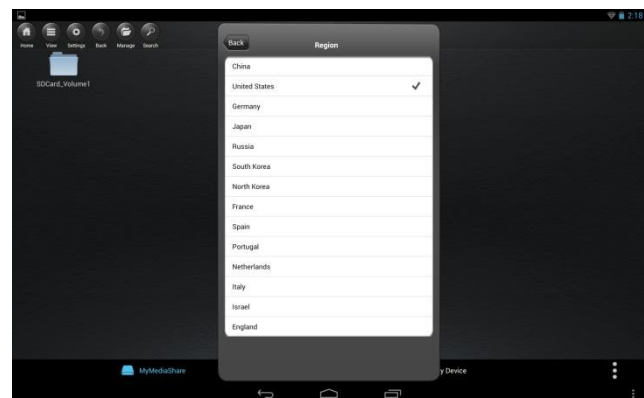
Because the Router is making the channel selection, and because different geographic regions use different channel ranges, MediaShare must further know your Region whenever the internet bridge feature is enabled.

Internet Bridge

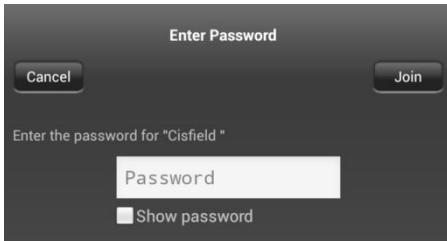
The Internet Bridge feature is disabled by default. To enable the bridge, click "On", confirm the Region setting, and then select your available router.



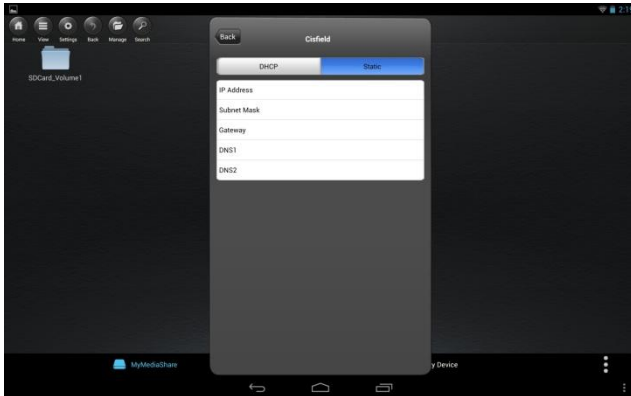
A different range of Wi-Fi channels is supported by different geographical regions. If your region is not listed, choose a region with the same channel range as your own.



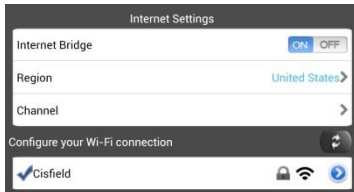
If your router requires a password, enter it to join the network.



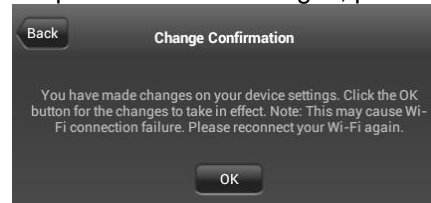
Connecting to your router may also require setting DHCP versus Static IP. If Static IP, then please enter IP Address, Subnet Mask, Gateway, and DNS settings.



Once the Internet Bridge function is active you will see a check mark next to the router name in Settings and the green Internet LED on MediaShare will be ON.



Press the Back button to exit the Settings menu. If you are prompted to confirm changes, press OK.



Channel

If Internet Bridge is disabled, then you may optionally set the Wi-Fi channel number from 1-11. The default selection is “auto”, which allows MediaShare to choose a channel with the best signal quality.

If the Internet Bridge is enabled, then MediaShare will use the channel set by the router.

Clear Cache Button

Click the Clear Cache button to clear the SSID cache files that have been saved during prior sessions or from third party applications.

Exiting the MediaShare App

To exit the MediaShare app on Kindle Fire tablets, simply press the Home key.

Getting Help

If you are experiencing difficulty installing or using your Verbatim product, please visit the main Technical Support website at verbatim.com/support.

Limited Warranty Terms

Verbatim offers to the original owner a 2-year limited warranty. For warranty terms that apply in your region, visit verbatim.com/warranty.

FCC Compliance

This equipment has been tested and found to comply with the limits for a Class B digital device, pursuant to Part 15 of the FCC Rules. These limits are designed to provide reasonable protection against harmful interference in a residential installation. This equipment generates, uses and can radiate radio frequency energy and, if not installed and used in accordance with the instructions, may cause harmful interference to radio communications. However, there is no guarantee that interference will not occur in a particular installation. If this equipment does cause harmful interference to radio or television reception, which can be determined by turning the equipment off and on, the user is encouraged to try to correct the interference by one or more of the following measures:

- Reorient or relocate the receiving antenna.
- Increase the separation between the equipment and receiver.
- Connect the equipment into an outlet on a circuit different from that to which the receiver is connected.
- Consult the dealer or an experienced radio/TV technician for help.

This equipment complies with FCC RF radiation exposure limits set forth for an uncontrolled environment. This transmitter must not be co-located or operating in conjunction with any other antenna or transmitter. This equipment should be installed and operated with a minimum distance of 20 centimeters between the radiator and your body.

Caution!

The manufacturer is not responsible for any radio or TV interference caused by unauthorized modifications to this equipment. Such modifications could void the user authority to operate the equipment.

CE Compliance Declaration

This device complies with the essential protection requirements of the Radio and Telecommunications Terminal Equipment Directive 1999/5/EC and its amendments on the approximation of the laws of the Member States relating to wireless radio equipment and electrical safety.

EN 300 328 V1.7.1 : 2006
 EN 301 489-1 V1.9.2 : 2011
 EN 301 489-17 V2.2.1 : 2012
 EN 55022 : 2010
 EN 55024 : 2010
 EN 62479 : 2010
 EN 60950-1 : 2006+ A11 : 2009 + A1 : 2010 + A12 : 2011

Canada IC RSS-210:2010

This device complies with Industry Canada license-exempt RSS standards. Operation is subject to the following two conditions:

- 1) This device may not cause interference; and
- 2) This device must accept any interference, including interference that may cause undesired operation of the device.

Le présent appareil est conforme aux CNR d'Industrie Canada applicables aux appareils radio exempts de licence. L'exploitation est autorisée aux deux conditions suivantes:

- 1) L'appareil ne doit pas produire de brouillage; et
- 2) L'utilisateur de l'appareil doit accepter tout brouillage radioélectrique subi, même si le brouillage est susceptible d'en compromettre le fonctionnement.

WEEE Notice



The Directive on Waste Electrical and Electronic Equipment (WEEE), which entered into force as European law on 13th February 2003, resulted in a major change in the treatment of electrical equipment at end-of-life. The WEEE logo (shown at the left) on the product or on its box indicates that this product must not be disposed of or dumped with your other household waste. For more information about electronic and electrical waste equipment disposal, recovery, and collection points, please contact your local municipal household waste disposal service or shop from where you purchased the equipment.

Rights

Copyright ©2013 Verbatim Americas, LLC. No part of this document, with exception of the following Gnu license, may be reproduced in any form or by any means, for any purpose, without the express written permission of Verbatim Americas, LLC. All rights reserved. All other brands and product names referenced herein are property of their respective owners.

The embedded firmware for this product is provided under the terms of the Gnu General Public License.

Licensing Information

The Verbatim MediaShare Wireless includes copyrighted third-party software licensed under the terms of the GNU General Public License. Please see The GNU General Public License for the exact terms and conditions of this license.

Item	Name	Package(Version)	Note
Bootloader	U-Boot	U-Boot 1.1.3	GPL v2 or later
Kernel	Linux	linux-2.6.21	GPL Version 2
Library			
	uClibc	uClibc-0.9.28	(LGPL) version 2 or later
	ldso	ld-uClibc-0.9.28.so	GPL
	libm	libm-0.9.28.so	FreeBSD
	libnsl	libnsl-0.9.28.so	GPL
	libpcap-1.0.0	libpcap-1.0.0	GPL
	libpthread	libpthread-0.9.28.so	GPL
	libiconv	libiconv-1.13.1	GPL
	libevent	libevent-2.0.10-stable	GPL
	libutil	libutil-0.9.28.so	GPL
	libz	zlib-1.2.3	Zlib(Distributable)
	libsqlite3.so.0	sqlite-autoconf-3071300	GPL
Application			
	busybox	BusyBox v1.12.1	GPL v2 or later
	ntp	ntp-4.2.4p2	GPL v2
	ntplib	ntplib	GPL v2
	parted	parted-3.0	GPL
	samba	samba-3.0.24	GPL
	lighttpd	lighttpd-1.4.28	GPL
	apache	Apache2.2.22	GPL
	hdparm	hdparm v7.7	BSD
	mtid-utils	mtid-utils-1.3.1	GPL
	ntfs-3g	ntfs-3g_ntfsprogs-2012.1.15	GPL
	ez-ipupdate	ez-ipupdate-3.0.10	(distributable)
	udev	udev-125ps	GPL
	wireless_tools	V29	GPL
	bridge-utils	2006-01-31	GPL
	pcre	7.9	BSD
	arptable	arptable-0.0.3	GPL
	dhcpforwarder	2004-08-19	Internet Systems
	ethtool	Ethtool V6	GPL
	expat	expat-2.0.1	MIT/X Consortium License
	igmpproxy	igmpproxy0.1 beta2	GPL
	inadyn	inadynVersion 1.96	GPL
	iproute2	iproute2-2.6.24-rc7	GPL v2 or later
	iptables	iptables-1.3.5	GPL v2 or later
	acl	acl-2.2.49	GPL
	mii_mgr	mii_mgr	GPL
	mtid_write	mtid_write	GPL

All listed software packages are copyright by their respective authors. Please see the source code for detailed information.

Availability of Source Code

Verbatim has exposed the full source code of the GPL licensed software, including any scripts to control compilation and installation of the object code. All future firmware updates will also be accompanied with their respective source code. For more information on how you can obtain our open source code, please visit our web site www.verbatim.com/mediasharewireless

GNU GENERAL PUBLIC LICENSE

Version 2, June 1991
Copyright (C) 1989, 1991 Free Software Foundation, Inc.
51 Franklin Street, Fifth Floor, Boston, MA 02110-1301, USA

Everyone is permitted to copy and distribute verbatim copies of this license document, but changing it is not allowed.

Preamble

The licenses for most software are designed to take away your freedom to share and change it. By contrast, the GNU General Public License is intended to guarantee your freedom to share and change free software--to make sure the software is free for all its users. This General Public License applies to most of the Free Software Foundation's software and to any other program whose authors commit to using it. (Some other Free Software Foundation software is covered by the GNU Lesser General Public License instead.) You can apply it to your programs, too.

When we speak of free software, we are referring to freedom, not price. Our General Public Licenses are designed to make sure that you have the freedom to distribute copies of free software (and charge for this service if you wish), that you receive source code or can get it if you want it, that you can change the software or use pieces of it in new free programs; and that you know you can do these things.

To protect your rights, we need to make restrictions that forbid anyone to deny you these rights or to ask you to surrender the rights. These restrictions translate to certain responsibilities for you if you distribute copies of the software, or if you modify it.

For example, if you distribute copies of such a program, whether gratis or for a fee, you must give the recipients all the rights that you have. You must make sure that they, too, receive or can get the source code. And you must show them these terms so they know their rights.

We protect your rights with two steps: (1) copyright the software, and (2) offer you this license which gives you legal permission to copy, distribute and/or modify the software.

Also, for each author's protection and ours, we want to make certain that everyone understands that there is no warranty for this free software. If the software is modified by someone else and passed on, we want its recipients to know that what they have is not the original, so that any problems introduced by others will not reflect on the original authors' reputations.

Finally, any free program is threatened constantly by software patents. We wish to avoid the danger that redistributors of a free program will individually obtain patent licenses, in effect making the program proprietary. To prevent this, we have made it clear that any patent must be licensed for everyone's free use or not licensed at all.

The precise terms and conditions for copying, distribution and modification follow.

TERMS AND CONDITIONS FOR COPYING, DISTRIBUTION AND MODIFICATION

0. This License applies to any program or other work which contains a notice placed by the copyright holder saying it may be distributed under the terms of this General Public License. The "Program", below, refers to any such program or work, and a "work based on the Program" means either the Program or any derivative work under copyright law: that is to say, a work containing the Program or a portion of it, either verbatim or with modifications and/or translated into another language. (Hereinafter, translation is included without limitation in the term "modification".) Each licensee is addressed as "you".

Activities other than copying, distribution and modification are not covered by this License; they are outside its scope. The act of running the Program is not restricted, and the output from the Program is covered only if its contents constitute a work based on the Program (independent of having been made by running the Program). Whether that is true depends on what the Program does.

1. You may copy and distribute verbatim copies of the Program's source code as you receive it, in any medium, provided that you conspicuously and appropriately publish on each copy an appropriate copyright notice and disclaimer of warranty; keep intact all the notices that refer to this License and to the absence of any warranty; and give any other recipients of the Program a copy of this License along with the Program.

You may charge a fee for the physical act of transferring a copy, and you may at your option offer warranty protection in exchange for a fee.

2. You may modify your copy or copies of the Program or any portion of it, thus forming a work based on the Program, and copy and distribute such modifications or work under the terms of Section 1 above, provided that you also meet all of these conditions:

a) You must cause the modified files to carry prominent notices stating that you changed the files and the date of any change.

b) You must cause any work that you distribute or publish, that in whole or in part contains or is derived from the Program or any part thereof, to be licensed as a whole at no charge to all third parties under the terms of this License.

c) If the modified program normally reads commands interactively when run, you must cause it, when started running for such interactive use in the most ordinary way, to print or display an announcement including an appropriate copyright notice and a notice that there is no warranty (or else, saying that you provide a warranty) and that users may redistribute the program under these conditions, and telling the user how to view a copy of this License. (Exception: if the Program itself is interactive but does not normally print such an announcement, your work based on the Program is not required to print an announcement.)

These requirements apply to the modified work as a whole. If identifiable sections of that work are not derived from the Program, and can be reasonably considered independent and separate works in themselves, then this License, and its terms, do not apply to those sections when you distribute them as separate works. But when you distribute the same sections as part of a whole which is a work based on the Program, the distribution of the whole must be on the terms of this License, whose permissions for other licensees extend to the entire whole, and thus to each and every part regardless of who wrote it.

Thus, it is not the intent of this section to claim rights or contest your rights to work written entirely by you; rather, the intent is to exercise the right to control the distribution of derivative or collective works based on the Program.

In addition, mere aggregation of another work not based on the Program with the Program (or with a work based on the Program) on a volume of a storage or distribution medium does not bring the other work under the scope of this License.

3. You may copy and distribute the Program (or a work based on it, under Section 2) in object code or executable form under the terms of Sections 1 and 2 above provided that you also do one of the following:

a) Accompany it with the complete corresponding machine-readable source code, which must be distributed under the terms of Sections 1 and 2 above on a medium customarily used for software interchange; or,

b) Accompany it with a written offer, valid for at least three years, to give any third party, for a charge no more than your cost of physically performing source distribution, a complete machine-readable copy of the corresponding source code, to be distributed under the terms of Sections 1 and 2 above on a medium customarily used for software interchange; or,

c) Accompany it with the information you received as to the offer to distribute corresponding source code. (This alternative is allowed only for noncommercial distribution and only if you received the program in object code or executable form with such an offer, in accord with Subsection b above.)

The source code for a work means the preferred form of the work for making modifications to it. For an executable work, complete source code means all the source code for all modules it contains, plus any associated interface definition files, plus the scripts used to control compilation and

installation of the executable. However, as a special exception, the source code distributed need not include anything that is normally distributed (in either source or binary form) with the major components (compiler, kernel, and so on) of the operating system on which the executable runs, unless that component itself accompanies the executable.

If distribution of executable or object code is made by offering access to copy from a designated place, then offering equivalent access to copy the source code from the same place counts as distribution of the source code, even though third parties are not compelled to copy the source along with the object code.

4. You may not copy, modify, sublicense, or distribute the Program except as expressly provided under this License. Any attempt otherwise to copy, modify, sublicense or distribute the Program is void, and will automatically terminate your rights under this License. However, parties who have received copies, or rights, from you under this License will not have their licenses terminated so long as such parties remain in full compliance.

5. You are not required to accept this License, since you have not signed it. However, nothing else grants you permission to modify or distribute the Program or its derivative works. These actions are prohibited by law if you do not accept this License. Therefore, by modifying or distributing the Program (or any work based on the Program), you indicate your acceptance of this License to do so, and all its terms and conditions for copying, distributing or modifying the Program or works based on it.

6. Each time you redistribute the Program (or any work based on the Program), the recipient automatically receives a license from the original licensor to copy, distribute or modify the Program subject to these terms and conditions. You may not impose any further restrictions on the recipients' exercise of the rights granted herein. You are not responsible for enforcing compliance by third parties to this License.

7. If, as a consequence of a court judgment or allegation of patent infringement or for any other reason (not limited to patent issues), conditions are imposed on you (whether by court order, agreement or otherwise) that contradict the conditions of this License, they do not excuse you from the conditions of this License. If you cannot distribute so as to satisfy simultaneously your obligations under this License and any other pertinent obligations, then as a consequence you may not distribute the Program at all. For example, if a patent license would not permit royalty-free redistribution of the Program by all those who receive copies directly or indirectly through you, then the only way you could satisfy both it and this License would be to refrain entirely from distribution of the Program.

If any portion of this section is held invalid or unenforceable under any particular circumstance, the balance of the section is intended to apply and the section as a whole is intended to apply in other circumstances.

It is not the purpose of this section to induce you to infringe any patents or other property right claims or to contest validity of any such claims; this section has the sole purpose of protecting the integrity of the free software distribution system, which is implemented by public license practices. Many people have made generous contributions to the wide range of software distributed through that system in reliance on consistent application of that system; it is up to the author/donor to decide if he or she is willing to distribute software through any other system and a licensee cannot impose that choice.

This section is intended to make thoroughly clear what is believed to be a consequence of the rest of this License.

8. If the distribution and/or use of the Program is restricted in certain countries either by patents or by copyrighted interfaces, the original copyright holder who places the Program under this License may add an explicit geographical distribution limitation excluding those countries, so that distribution is permitted only in or among countries not thus excluded. In such case, this License incorporates the limitation as if written in the body of this License.

9. The Free Software Foundation may publish revised and/or new versions of the General Public License from time to time. Such new versions will be similar in spirit to the present version, but may differ in detail to address new problems or concerns.

Each version is given a distinguishing version number. If the Program specifies a version number of this License which applies to it and "any later version", you have the option of following the terms and conditions either of that version or of any later version published by the Free Software Foundation. If the Program does not specify a version number of this License, you may choose any version ever published by the Free Software Foundation.

10. If you wish to incorporate parts of the Program into other free programs whose distribution conditions are different, write to the author to ask for permission. For software which is copyrighted by the Free Software Foundation, write to the Free Software Foundation; we sometimes make exceptions for this. Our decision will be guided by the two goals of preserving the free status of all derivatives of our free software and of promoting the sharing and reuse of software generally.

NO WARRANTY

11. BECAUSE THE PROGRAM IS LICENSED FREE OF CHARGE, THERE IS NO WARRANTY FOR THE PROGRAM, TO THE EXTENT PERMITTED BY APPLICABLE LAW. EXCEPT WHEN OTHERWISE STATED IN WRITING THE COPYRIGHT HOLDERS AND/OR OTHER PARTIES PROVIDE THE PROGRAM "AS IS" WITHOUT WARRANTY OF ANY KIND, EITHER EXPRESSED OR IMPLIED, INCLUDING, BUT NOT LIMITED TO, THE IMPLIED WARRANTIES OF MERCHANTABILITY AND FITNESS FOR A PARTICULAR PURPOSE. THE ENTIRE RISK AS TO THE QUALITY AND PERFORMANCE OF THE PROGRAM IS WITH YOU. SHOULD THE PROGRAM PROVE DEFECTIVE, YOU ASSUME THE COST OF ALL NECESSARY SERVICING, REPAIR OR CORRECTION.

12. IN NO EVENT UNLESS REQUIRED BY APPLICABLE LAW OR AGREED TO IN WRITING WILL ANY COPYRIGHT HOLDER, OR ANY OTHER PARTY WHO MAY MODIFY AND/OR REDISTRIBUTE THE PROGRAM AS PERMITTED ABOVE, BE LIABLE TO YOU FOR DAMAGES, INCLUDING ANY GENERAL, SPECIAL, INCIDENTAL OR CONSEQUENTIAL DAMAGES ARISING OUT OF THE USE OR INABILITY TO USE THE PROGRAM (INCLUDING BUT NOT LIMITED TO LOSS OF DATA OR DATA BEING RENDERED INACCURATE OR LOSSES SUSTAINED BY YOU OR THIRD PARTIES OR A FAILURE OF THE PROGRAM TO OPERATE WITH ANY OTHER PROGRAMS), EVEN IF SUCH HOLDER OR OTHER PARTY HAS BEEN ADVISED OF THE POSSIBILITY OF SUCH DAMAGES.

GNU LESSER GENERAL PUBLIC LICENSE

Version 2.1, February 1999

Copyright (C) 1991, 1999 Free Software Foundation, Inc., 51 Franklin Street, Fifth Floor, Boston, MA 02110-1301 USA

Everyone is permitted to copy and distribute verbatim copies of this license document, but changing it is not allowed.

[This is the first released version of the Lesser GPL. It also counts as the successor of the GNU Library Public License, version 2, hence the version number 2.1.]

Preamble

The licenses for most software are designed to take away your freedom to share and change it. By contrast, the GNU General Public Licenses are intended to guarantee your freedom to share and change free software--to make sure the software is free for all its users.

This license, the Lesser General Public License, applies to some specially designated software packages--typically libraries--of the Free Software Foundation and other authors who decide to use it. You can use it too, but we suggest you first think carefully about whether this license or the

ordinary General Public License is the better strategy to use in any particular case, based on the explanations below.

When we speak of free software, we are referring to freedom of use, not price. Our General Public Licenses are designed to make sure that you have the freedom to distribute copies of free software (and charge for this service if you wish); that you receive source code or can get it if you want it; that you can change the software and use pieces of it in new free programs; and that you are informed that you can do these things.

To protect your rights, we need to make restrictions that forbid distributors to deny you these rights or to ask you to surrender these rights. These restrictions translate to certain responsibilities for you if you distribute copies of the library or if you modify it.

For example, if you distribute copies of the library, whether gratis or for a fee, you must give the recipients all the rights that we gave you. You must make sure that they, too, receive or can get the source code. If you link other code with the library, you must provide complete object files to the recipients, so that they can relink them with the library after making changes to the library and recompiling it. And you must show them these terms so they know their rights.

We protect your rights with a two-step method: (1) we copyright the library, and (2) we offer you this license, which gives you legal permission to copy, distribute and/or modify the library.

To protect each distributor, we want to make it very clear that there is no warranty for the free library. Also, if the library is modified by someone else and passed on, the recipients should know that what they have is not the original version, so that the original author's reputation will not be affected by problems that might be introduced by others.

Finally, software patents pose a constant threat to the existence of any free program. We wish to make sure that a company cannot effectively restrict the users of a free program by obtaining a restrictive license from a patent holder. Therefore, we insist that any patent license obtained for a version of the library must be consistent with the full freedom of use specified in this license.

Most GNU software, including some libraries, is covered by the ordinary GNU General Public License. This license, the GNU Lesser General Public License, applies to certain designated libraries, and is quite different from the ordinary General Public License. We use this license for certain libraries in order to permit linking those libraries into non-free programs.

When a program is linked with a library, whether statically or using a shared library, the combination of the two is legally speaking a combined work, a derivative of the original library. The ordinary General Public License therefore permits such linking only if the entire combination fits its criteria of freedom. The Lesser General Public License permits more lax criteria for linking other code with the library.

We call this license the "Lesser" General Public License because it does Less to protect the user's freedom than the ordinary General Public License. It also provides other free software developers Less of an advantage over competing non-free programs. These disadvantages are the reason we use the ordinary General Public License for many libraries. However, the Lesser license provides advantages in certain special circumstances.

For example, on rare occasions, there may be a special need to encourage the widest possible use of a certain library, so that it becomes a de-facto standard. To achieve this, non-free programs must be allowed to use the library. A more frequent case is that a free library does the same job as widely used non-free libraries. In this case, there is little to gain by limiting the free library to free software only, so we use the Lesser General Public License.

In other cases, permission to use a particular library in non-free programs enables a greater number of people to use a large body of free software. For example, permission to use the GNU C Library in non-free programs enables many more people to use the whole GNU operating system, as well as its variant, the GNU/Linux operating system.

Although the Lesser General Public License is Less protective of the users' freedom, it does ensure that the user of a program that is linked with the Library has the freedom and the wherewithal to run that program using a modified version of the Library.

The precise terms and conditions for copying, distribution and modification follow. Pay close attention to the difference between a "work based on the library" and a "work that uses the library". The former contains code derived from the library, whereas the latter must be combined with the library in order to run.

TERMS AND CONDITIONS FOR COPYING, DISTRIBUTION AND MODIFICATION

0. This License Agreement applies to any software library or other program which contains a notice placed by the copyright holder or other authorized party saying it may be distributed under the terms of this Lesser General Public License (also called "this License"). Each licensee is addressed as "you".

A "library" means a collection of software functions and/or data prepared so as to be conveniently linked with application programs (which use some of those functions and data) to form executables.

The "Library", below, refers to any such software library or work which has been distributed under these terms. A "work based on the Library" means either the Library or any derivative work under copyright law: that is to say, a work containing the Library or a portion of it, either verbatim or with modifications and/or translated straightforwardly into another language. (Hereinafter, translation is included without limitation in the term "modification".)

"Source code" for a work means the preferred form of the work for making modifications to it. For a library, complete source code means all the source code for all modules it contains, plus any associated interface definition files, plus the scripts used to control compilation and installation of the library.

Activities other than copying, distribution and modification are not covered by this License; they are outside its scope. The act of running a program using the Library is not restricted, and output from such a program is covered only if its contents constitute a work based on the Library (independent of the use of the Library in a tool for writing it). Whether that is true depends on what the Library does and what the program that uses the Library does.

1. You may copy and distribute verbatim copies of the Library's complete source code as you receive it, in any medium, provided that you conspicuously and appropriately publish on each copy an appropriate copyright notice and disclaimer of warranty; keep intact all the notices that refer to this License and to the absence of any warranty; and distribute a copy of this License along with the Library.

You may charge a fee for the physical act of transferring a copy, and you may at your option offer warranty protection in exchange for a fee.

2. You may modify your copy or copies of the Library or any portion of it, thus forming a work based on the Library, and copy and distribute such modifications or work under the terms of Section 1 above, provided that you also meet all of these conditions:

- **a)** The modified work must itself be a software library.
- **b)** You must cause the files modified to carry prominent notices stating that you changed the files and the date of any change.
- **c)** You must cause the whole of the work to be licensed at no charge to all third parties under the terms of this License.
- **d)** If a facility in the modified Library refers to a function or a table of data to be supplied by an application program that uses the facility, other than as an argument passed when the facility is invoked, then you must make a good faith effort to ensure that, in the event an application does not supply such function or table, the facility still operates, and performs whatever part of its purpose remains meaningful.

(For example, a function in a library to compute square roots has a purpose that is entirely well-defined independent of the application. Therefore, Subsection 2d requires that any application-supplied function or table used by this function must be optional: if the application does not supply it, the square root function must still compute square roots.)

These requirements apply to the modified work as a whole. If identifiable sections of that work are not derived from the Library, and can be reasonably considered independent and separate works in themselves, then this License, and its terms, do not apply to those sections when you distribute them as separate works. But when you distribute the same sections as part of a whole which is a work based on the Library, the distribution of the whole must be on the terms of this License, whose permissions for other licensees extend to the entire whole, and thus to each and every part regardless of who wrote it.

Thus, it is not the intent of this section to claim rights or contest your rights to work written entirely by you; rather, the intent is to exercise the right to control the distribution of derivative or collective works based on the Library.

In addition, mere aggregation of another work not based on the Library with the Library (or with a work based on the Library) on a volume of a storage or distribution medium does not bring the other work under the scope of this License.

3. You may opt to apply the terms of the ordinary GNU General Public License instead of this License to a given copy of the Library. To do this, you must alter all the notices that refer to this License, so that they refer to the ordinary GNU General Public License, version 2, instead of to this License. (If a newer version than version 2 of the ordinary GNU General Public License has appeared, then you can specify that version instead if you wish.) Do not make any other change in these notices.

Once this change is made in a given copy, it is irreversible for that copy, so the ordinary GNU General Public License applies to all subsequent copies and derivative works made from that copy.

This option is useful when you wish to copy part of the code of the Library into a program that is not a library.

4. You may copy and distribute the Library (or a portion or derivative of it, under Section 2) in object code or executable form under the terms of Sections 1 and 2 above provided that you accompany it with the complete corresponding machine-readable source code, which must be distributed under the terms of Sections 1 and 2 above on a medium customarily used for software interchange.

If distribution of object code is made by offering access to copy from a designated place, then offering equivalent access to copy the source code from the same place satisfies the requirement to distribute the source code, even though third parties are not compelled to copy the source along with the object code.

5. A program that contains no derivative of any portion of the Library, but is designed to work with the Library by being compiled or linked with it, is called a "work that uses the Library". Such a work, in isolation, is not a derivative work of the Library, and therefore falls outside the scope of this License.

However, linking a "work that uses the Library" with the Library creates an executable that is a derivative of the Library (because it contains portions of the Library), rather than a "work that uses the library". The executable is therefore covered by this License. Section 6 states terms for distribution of such executables.

When a "work that uses the Library" uses material from a header file that is part of the Library, the object code for the work may be a derivative work of the Library even though the source code is not. Whether this is true is especially significant if the work can be linked without the Library, or if the work is itself a library. The threshold for this to be true is not precisely defined by law.

If such an object file uses only numerical parameters, data structure layouts and accessors, and small macros and small inline functions (ten lines or less in length), then the use of the object file is unrestricted, regardless of whether it is legally a derivative work. (Executables containing this object code plus portions of the Library will still fall under Section 6.)

Otherwise, if the work is a derivative of the Library, you may distribute the object code for the work under the terms of Section 6. Any executables containing that work also fall under Section 6, whether or not they are linked directly with the Library itself.

6. As an exception to the Sections above, you may also combine or link a "work that uses the Library" with the Library to produce a work containing portions of the Library, and distribute that work under terms of your choice, provided that the terms permit modification of the work for the customer's own use and reverse engineering for debugging such modifications.

You must give prominent notice with each copy of the work that the Library is used in it and that the Library and its use are covered by this License. You must supply a copy of this License. If the work during execution displays copyright notices, you must include the copyright notice for the Library among them, as well as a reference directing the user to the copy of this License. Also, you must do one of these things:

- **a)** Accompany the work with the complete corresponding machine-readable source code for the Library including whatever changes were used in the work (which must be distributed under Sections 1 and 2 above); and, if the work is an executable linked with the Library, with the complete machine-readable "work that uses the Library", as object code and/or source code, so that the user can modify the Library and then relink to produce a modified executable containing the modified Library. (It is understood that the user who changes the contents of definitions files in the Library will not necessarily be able to recompile the application to use the modified definitions.)
- **b)** Use a suitable shared library mechanism for linking with the Library. A suitable mechanism is one that (1) uses at run time a copy of the library already present on the user's computer system, rather than copying library functions into the executable, and (2) will operate properly with a modified version of the library, if the user installs one, as long as the modified version is interface-compatible with the version that the work was made with.
- **c)** Accompany the work with a written offer, valid for at least three years, to give the same user the materials specified in Subsection 6a, above, for a charge no more than the cost of performing this distribution.
- **d)** If distribution of the work is made by offering access to copy from a designated place, offer equivalent access to copy the above specified materials from the same place.
- **e)** Verify that the user has already received a copy of these materials or that you have already sent this user a copy.

For an executable, the required form of the "work that uses the Library" must include any data and utility programs needed for reproducing the executable from it. However, as a special exception, the materials to be distributed need not include anything that is normally distributed (in either source or binary form) with the major components (compiler, kernel, and so on) of the operating system on which the executable runs, unless that component itself accompanies the executable.

It may happen that this requirement contradicts the license restrictions of other proprietary libraries that do not normally accompany the operating system. Such a contradiction means you cannot use both them and the Library together in an executable that you distribute.

7. You may place library facilities that are a work based on the Library side-by-side in a single library together with other library facilities not covered by this License, and distribute such a combined library, provided that the separate distribution of the work based on the Library and of the other library facilities is otherwise permitted, and provided that you do these two things:

- **a)** Accompany the combined library with a copy of the same work based on the Library, uncombined with any other library facilities. This must be distributed under the terms of the Sections above.
- **b)** Give prominent notice with the combined library of the fact that part of it is a work based on the Library, and explaining where to find the accompanying uncombined form of the same work.

8. You may not copy, modify, sublicense, link with, or distribute the Library except as expressly provided under this License. Any attempt otherwise to copy, modify, sublicense, link with, or distribute the Library is void, and will automatically terminate your rights under this License.

However, parties who have received copies, or rights, from you under this License will not have their licenses terminated so long as such parties remain in full compliance.

9. You are not required to accept this License, since you have not signed it. However, nothing else grants you permission to modify or distribute the Library or its derivative works. These actions are prohibited by law if you do not accept this License. Therefore, by modifying or distributing the Library (or any work based on the Library), you indicate your acceptance of this License to do so, and all its terms and conditions for copying, distributing or modifying the Library or works based on it.

10. Each time you redistribute the Library (or any work based on the Library), the recipient automatically receives a license from the original licensor to copy, distribute, link with or modify the Library subject to these terms and conditions. You may not impose any further restrictions on the recipients' exercise of the rights granted herein. You are not responsible for enforcing compliance by third parties with this License.

11. If, as a consequence of a court judgment or allegation of patent infringement or for any other reason (not limited to patent issues), conditions are imposed on you (whether by court order, agreement or otherwise) that contradict the conditions of this License, they do not excuse you from the conditions of this License. If you cannot distribute so as to satisfy simultaneously your obligations under this License and any other pertinent obligations, then as a consequence you may not distribute the Library at all. For example, if a patent license would not permit royalty-free redistribution of the Library by all those who receive copies directly or indirectly through you, then the only way you could satisfy both it and this License would be to refrain entirely from distribution of the Library.

If any portion of this section is held invalid or unenforceable under any particular circumstance, the balance of the section is intended to apply, and the section as a whole is intended to apply in other circumstances.

It is not the purpose of this section to induce you to infringe any patents or other property right claims or to contest validity of any such claims; this section has the sole purpose of protecting the integrity of the free software distribution system which is implemented by public license practices. Many people have made generous contributions to the wide range of software distributed through that system in reliance on consistent application of that system; it is up to the author/donor to decide if he or she is willing to distribute software through any other system and a licensee cannot impose that choice.

This section is intended to make thoroughly clear what is believed to be a consequence of the rest of this License.

12. If the distribution and/or use of the Library is restricted in certain countries either by patents or by copyrighted interfaces, the original copyright holder who places the Library under this License may add an explicit geographical distribution limitation excluding those countries, so that distribution is permitted only in or among countries not thus excluded. In such case, this License incorporates the limitation as if written in the body of this License.

13. The Free Software Foundation may publish revised and/or new versions of the Lesser General Public License from time to time. Such new versions will be similar in spirit to the present version, but may differ in detail to address new problems or concerns.

Each version is given a distinguishing version number. If the Library specifies a version number of this License which applies to it and "any later version", you have the option of following the terms and conditions either of that version or of any later version published by the Free Software Foundation. If the Library does not specify a license version number, you may choose any version ever published by the Free Software Foundation.

14. If you wish to incorporate parts of the Library into other free programs whose distribution conditions are incompatible with these, write to the author to ask for permission. For software which is copyrighted by the Free Software Foundation, write to the Free Software Foundation; we sometimes make exceptions for this. Our decision will be guided by the two goals of preserving the free status of all derivatives of our free software and of promoting the sharing and reuse of software generally.

NO WARRANTY

15. BECAUSE THE LIBRARY IS LICENSED FREE OF CHARGE, THERE IS NO WARRANTY FOR THE LIBRARY, TO THE EXTENT PERMITTED BY APPLICABLE LAW. EXCEPT WHEN OTHERWISE STATED IN WRITING THE COPYRIGHT HOLDERS AND/OR OTHER PARTIES PROVIDE THE LIBRARY "AS IS" WITHOUT WARRANTY OF ANY KIND, EITHER EXPRESSED OR IMPLIED, INCLUDING, BUT NOT LIMITED TO, THE IMPLIED WARRANTIES OF MERCHANTABILITY AND FITNESS FOR A PARTICULAR PURPOSE. THE ENTIRE RISK AS TO THE QUALITY AND PERFORMANCE OF THE LIBRARY IS WITH YOU. SHOULD THE LIBRARY PROVE DEFECTIVE, YOU ASSUME THE COST OF ALL NECESSARY SERVICING, REPAIR OR CORRECTION.

16. IN NO EVENT UNLESS REQUIRED BY APPLICABLE LAW OR AGREED TO IN WRITING WILL ANY COPYRIGHT HOLDER, OR ANY OTHER PARTY WHO MAY MODIFY AND/OR REDISTRIBUTE THE LIBRARY AS PERMITTED ABOVE, BE LIABLE TO YOU FOR DAMAGES, INCLUDING ANY GENERAL, SPECIAL, INCIDENTAL OR CONSEQUENTIAL DAMAGES ARISING OUT OF THE USE OR INABILITY TO USE THE LIBRARY (INCLUDING BUT NOT LIMITED TO LOSS OF DATA OR DATA BEING RENDERED INACCURATE OR LOSSES SUSTAINED BY YOU OR THIRD PARTIES OR A FAILURE OF THE LIBRARY TO OPERATE WITH ANY OTHER SOFTWARE), EVEN IF SUCH HOLDER OR OTHER PARTY HAS BEEN ADVISED OF THE POSSIBILITY OF SUCH DAMAGES.

FreeBSD Licence

Copyright 1992-2014 The FreeBSD Project. All rights reserved.

Redistribution and use in source and binary forms, with or without modification, are permitted provided that the following conditions are met:

1. Redistributions of source code must retain the above copyright notice, this list of conditions and the following disclaimer.
2. Redistributions in binary form must reproduce the above copyright notice, this list of conditions and the following disclaimer in the documentation and/or other materials provided with the distribution.

THIS SOFTWARE IS PROVIDED BY THE FREEBSD PROJECT "AS IS" AND ANY EXPRESS OR IMPLIED WARRANTIES, INCLUDING, BUT NOT LIMITED TO, THE IMPLIED WARRANTIES OF MERCHANTABILITY AND FITNESS FOR A PARTICULAR PURPOSE ARE DISCLAIMED. IN NO EVENT SHALL THE FREEBSD PROJECT OR CONTRIBUTORS BE LIABLE FOR ANY DIRECT, INDIRECT, INCIDENTAL, SPECIAL, EXEMPLARY, OR CONSEQUENTIAL DAMAGES (INCLUDING, BUT NOT LIMITED TO, PROCUREMENT OF SUBSTITUTE GOODS OR SERVICES; LOSS OF USE, DATA, OR PROFITS; OR BUSINESS INTERRUPTION) HOWEVER CAUSED AND ON ANY THEORY OF LIABILITY, WHETHER IN CONTRACT, STRICT LIABILITY, OR TORT (INCLUDING NEGLIGENCE OR OTHERWISE) ARISING IN ANY WAY OUT OF THE USE OF THIS SOFTWARE, EVEN IF ADVISED OF THE POSSIBILITY OF SUCH DAMAGE.

The views and conclusions contained in the software and documentation are those of the authors and should not be interpreted as representing official policies, either expressed or implied, of the FreeBSD Project.

MIT Licence

Copyright (c) <year> <copyright holders>

Permission is hereby granted, free of charge, to any person obtaining a copy of this software and associated documentation files (the "Software"), to deal in the Software without restriction, including without limitation the rights to use, copy, modify, merge, publish, distribute, sublicense, and/or sell copies of the Software, and to permit persons to whom the Software is furnished to do so, subject to the following conditions:

The above copyright notice and this permission notice shall be included in all copies or substantial portions of the Software. THE SOFTWARE IS PROVIDED "AS IS", WITHOUT WARRANTY OF ANY KIND, EXPRESS OR IMPLIED, INCLUDING BUT NOT LIMITED TO THE WARRANTIES OF MERCHANTABILITY, FITNESS FOR A PARTICULAR PURPOSE AND NONINFRINGEMENT. IN NO EVENT SHALL THE AUTHORS OR COPYRIGHT HOLDERS BE LIABLE FOR ANY CLAIM, DAMAGES OR OTHER LIABILITY, WHETHER IN AN ACTION OF CONTRACT, TORT OR OTHERWISE, ARISING FROM, OUT OF OR IN CONNECTION WITH THE SOFTWARE OR THE USE OR OTHER DEALINGS IN THE SOFTWARE.