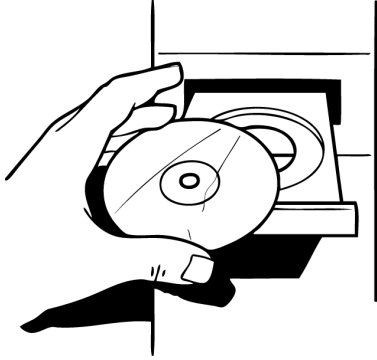




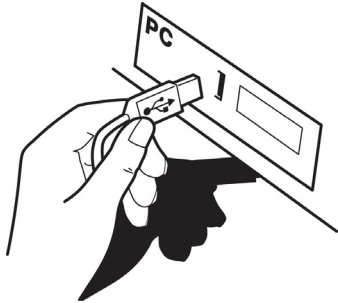
1



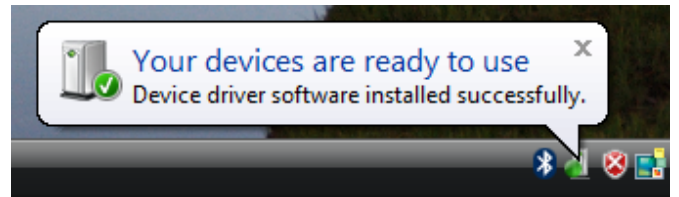
2



3



4



5



[www.trust.com/16550/faq](http://www.trust.com/16550/faq)



## 1.0 Changing mouse buttons

- 1.1 Changing regular buttons
- 1.2 Advanced Functions
  - 1.2.1 Combo
  - 1.2.2 Basic command
  - 1.2.3 Extra command
  - 1.2.4 Media command

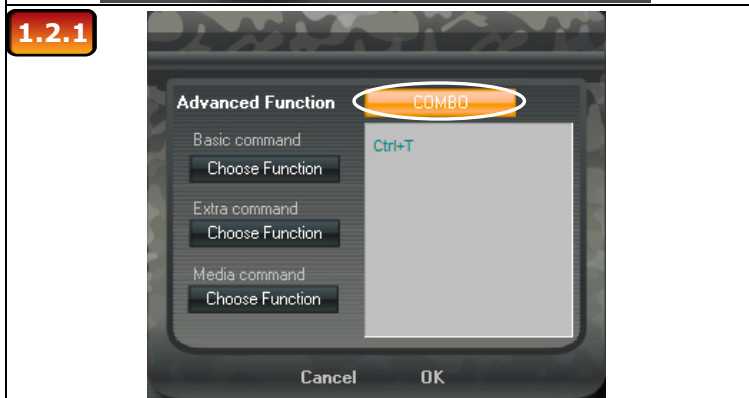
## 2.0 Saving/Load Profiles

- 2.1 Save Profiles
- 2.2 Load Profiles



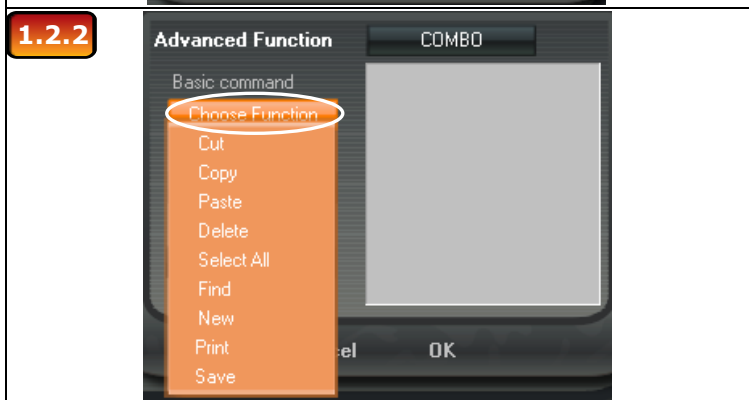
*In the general section, you can re-assign your mouse buttons.*

- Click on the button witch you want to re-assign (A)
- Click on the function you want to assign to the button
- Click on 'Apply' (C) → The mouse is being updated
- Click on 'Close'
- Click on 'OK'



*In the COMBO section, you can assign any Key or Keystroke to a mouse button.*

- Click on the button witch you want to change (A)
- Click on 'Adv Function'
- Click on 'COMBO'
- You can now insert any keypress or key-combo.
- Click on 'OK'
- Click on 'Apply' (C) → The mouse is being updated
- Click on 'Close'
- Click on 'OK'



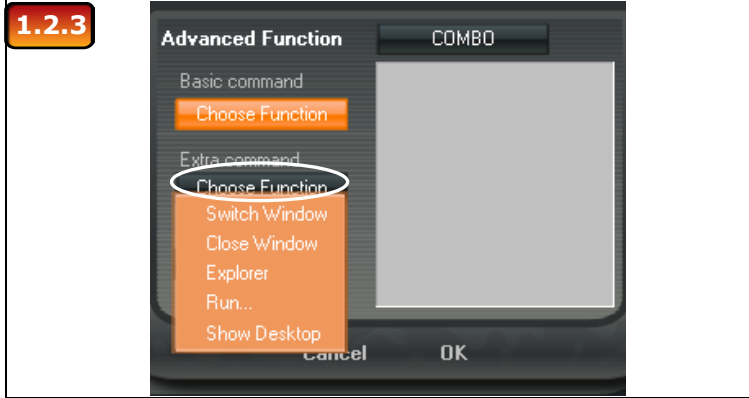
*In the Basic Command section, you can assign basic windows commands to the mouse button.*

- Click on the button witch you want to change (A)
- Click on 'Adv Function'
- Click on 'Choose Function' beneath 'Basic command'
- Select a command
- Click on 'OK'
- Click on 'Apply' (C) → The mouse is being updated
- Click on 'OK'



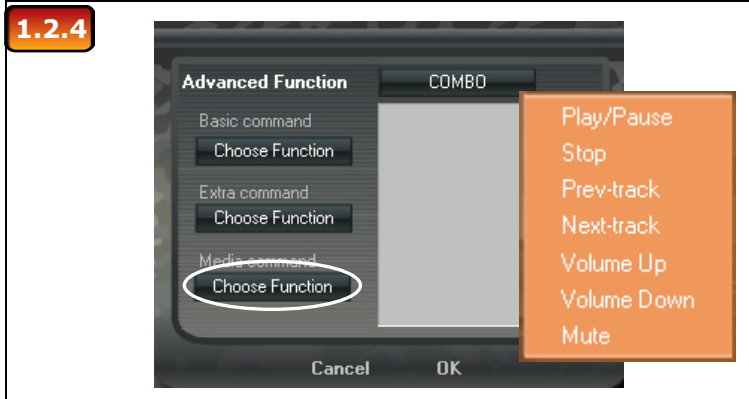
[www.trust.com/16550/faq](http://www.trust.com/16550/faq)





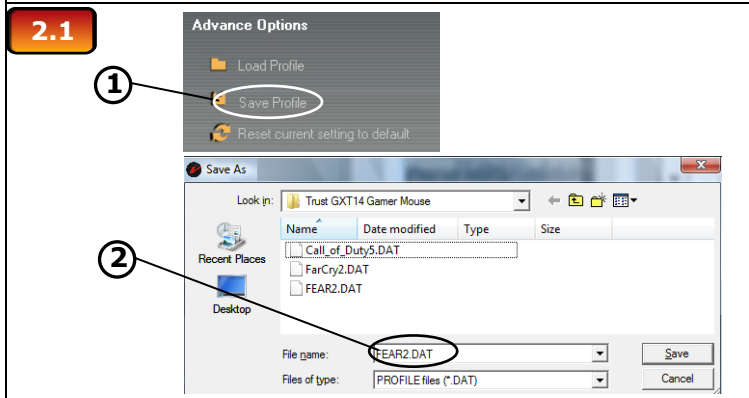
*In the Extra Command section, you can assign extra windows commands to the mouse button.*

- Click on the button witch you want to change (A)
- Click on 'Adv Function'
- Click on 'Choose Function' beneath 'Extra command'
- Select a command
- Click on 'OK'
- Click on 'Apply' (C) → The mouse is beeing updated
- Click on 'OK'



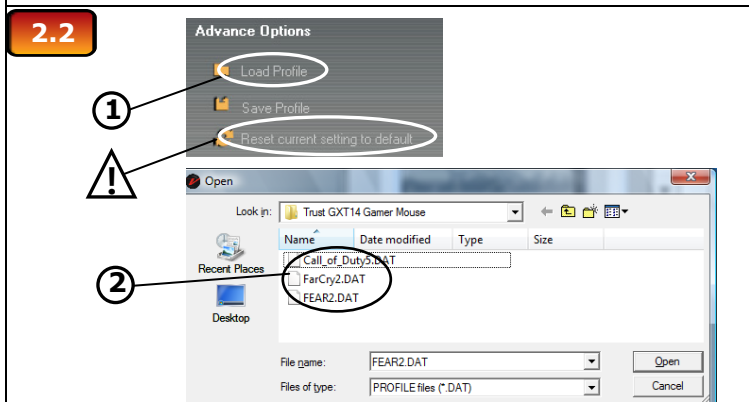
*In the Media Command section, you can assign windows media commands to the mouse button.*

- Click on the button witch you want to change (A)
- Click on 'Adv Function'
- Click on 'Choose Function' beneath 'Media command'
- Select a command
- Click on 'OK'
- Click on 'Apply' (C) → The mouse is beeing updated
- Click on 'OK'



*In the Save/Load Options section, you can save and load different porfiles.*

- Click on 'Save/Load Options' (B)
- Click on 'Save Profile' (1)
- Browse to the location where you want to save.
- Insert a profile name. *for example 'Far\_Cry2'* (2)
- Click on 'Save'
- Click on 'OK'



*In the Save/Load Options section, you can save and load different porfiles.*

- Click on 'Save/Load Options' (B)
- Click on 'Load Profile' (1)
- Browse to the location where the file is located. (2)
- Select the file witch you want to load.
- Click on 'Open'
- Click on 'Apply' (C) → The mouse is beeing updated

**!** *For default settings click 'Reset current setting to default' in the 'Save/Load Options' menu*