



This product **MUST** be
used responsibly

Read all instructions
thoroughly before
use and retain for
future reference



EVOLUTION™

IPL HAIR REMOVER

user guide

If you have any questions, or if you experience any difficulties please call our
Rio Careline on: 01242 702345 or email us at: online@riobeauty.com

The Dezac Group 2012

The Dezac Group 2012

The Dezac Group 2012

WARNINGS

- **Read all instructions thoroughly and retain for future reference.**
- This appliance can be used by children aged 8 years and above and persons with reduced physical, sensory or mental capabilities or lack of experience and knowledge if they have been given supervision or instruction concerning the use of the appliance in a safe way and understand the hazards involved. Children shall not play with the appliance. Cleaning and maintenance shall not be made by children without supervision.
- Never aim the product at or near eyes.
- Reflection Hazard: Please remove all jewellery in the vicinity of the treatment area before use.
- Do NOT use near flammable materials.
- Do NOT use this appliance in wet surroundings (near a bath or shower).
- Do NOT use if water enters the unit.
- Do NOT immerse in water.

WARNINGS

Unsuitable skin tones and hair types:

- IPL is not suitable for dark skin tones, for example, those of Afro-Caribbean, Black African, Indian or Pakistani descent. See “Suitable Skin Types” and always carry out Patch Test.
- IPL is not suitable for the removal of red, light blonde, grey or white hair.

Areas not to treat:

- Do NOT treat over tattoos, permanent make-up, pimples, acne, warts, hair on black spots or moles, dark freckles, skin disease, birth marks, burns, nipples, genital or anal areas, varicose veins, eczema, cold sores, psoriasis, open wounds, on abnormal skin pigmentation such as albinism and vitiligo or on broken skin.

WARNINGS

Do not use if:

- You are pregnant or breast feeding, you have a history of epilepsy or are taking medication known to increase photosensitivity. If you have any history of epileptic seizures we do NOT recommend using IPL. Common medications can cause photosensitivity so if you are on any medication you should check for photosensitivity warnings and if in any doubt consult your doctor. Common medications which can cause photosensitivity include some diuretics, some antibiotics, tricyclic antidepressants and medications prescribed for thyroid conditions, lupus and arthritis.
- Do NOT use if you have a history of skin cancer.
- Do NOT use if you have diabetes, kidney disease, heart disease or thyroid problems.
- Do NOT treat the same area repeatedly in any one session.

WARNINGS

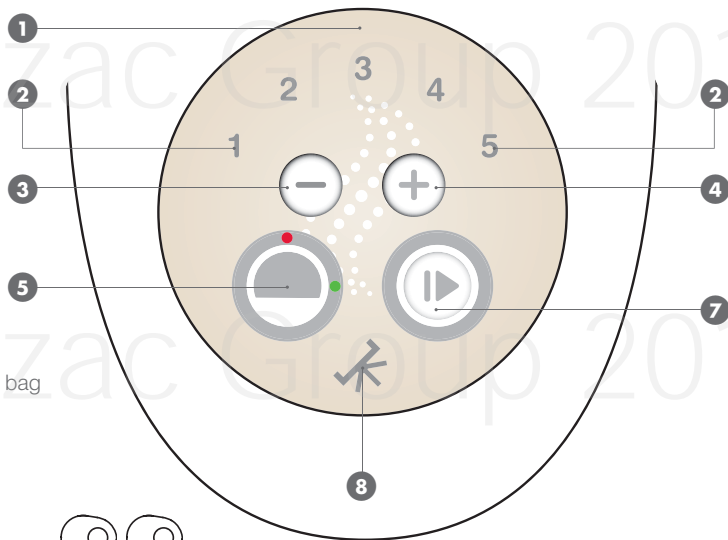
Possible reactions:

- Most people feel a heating sensation during treatment. Some people experience a slight reddening of the skin. In most cases this will disappear within 24 hours, but on rare occasions it may take up to 72 hours.
 - The following effects will require discontinuing treatment:
 - Pain in the area treated
 - Itching in the area treated
 - Redness
- In each case, cool the area – we recommend an aloe vera cooling gel. If symptoms continue after 48 hours, seek medical advice.
- If blistering or burning occurs, seek medical advice immediately.

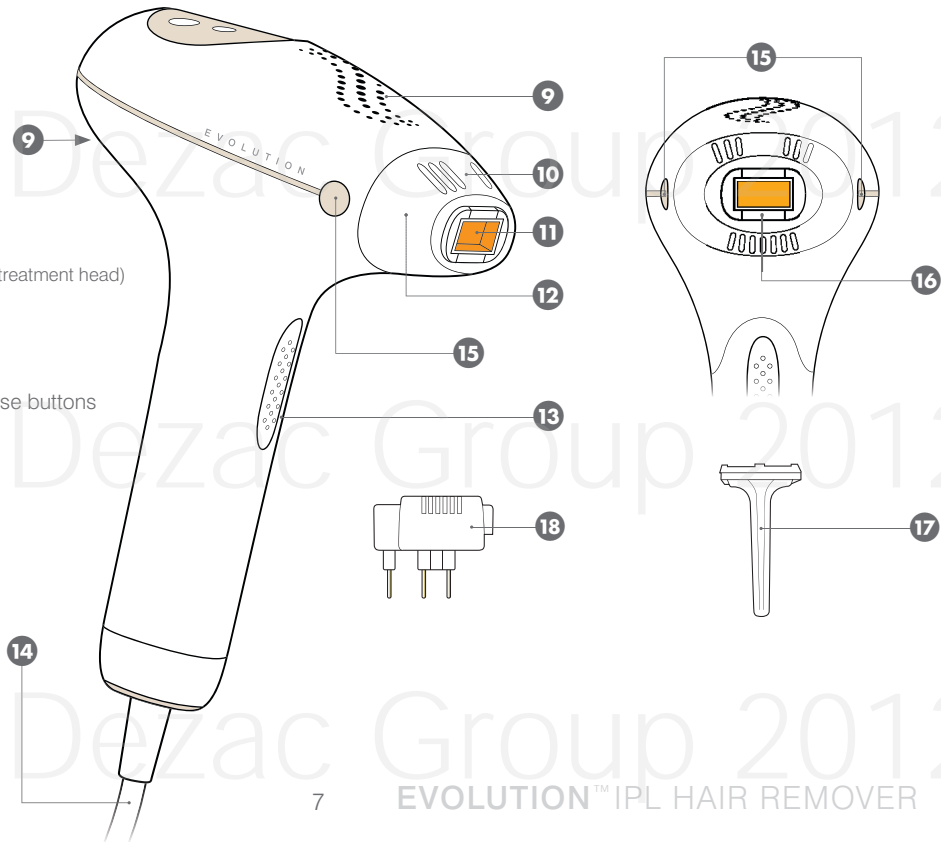
INTRODUCTION

The **EVOLUTION™** IPL HAIR REMOVER uses the latest Intense Pulsed Light (IPL) technology. Placed against the skin, gentle pulses of intense light are directed at the hair follicle to disable the hair root without affecting the surrounding area. The hair follicle is disabled as a result of lasting damage to the hair root. Regular treatments result in permanent hair reduction. IPL is suitable for larger areas such as legs, arms, underarms, bikini line, back and chest as well as certain areas of the face.

- 1 Control panel
- 2 Power level indicators (1-5)
- 3 Power level decrease button (-)
- 4 Power level increase button (+)
- 5 Security lock
- 6 Security key (x2)
(x1) attached to power lead, (x1) key in bag
- 7 Enable button
- 8 Indicator light



- 9 Air vents
- 10 Treatment head
- 11 Orange IPL aperture
- 12 Bulb cartridge (inside treatment head)
- 13 IPL treatment button
- 14 Mains power lead
- 15 Treatment head release buttons
- 16 Skin sensors (x4)
- 17 Razor
- 18 Spare bulb cartridge



SUITABLE SKIN TYPES

Your Evolution IPL Hair Remover is suitable for fair coloured skin through to olive and tanned skin types. For treatment to be effective the hair needs to be darker than the surrounding skin. Best results are on pale skin with dark hair.

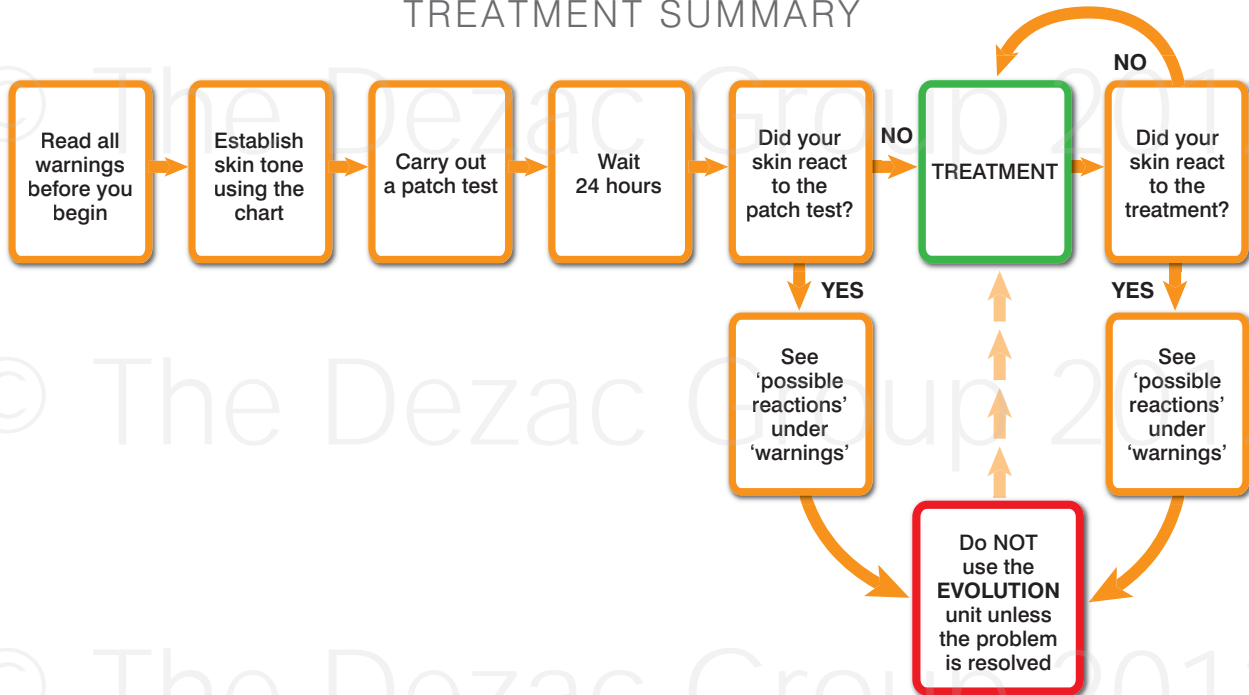
You may find that different power levels are required on different areas. Each area should be tested for the appropriate maximum power level.

Use the skin tone chart together with the chart (page 10) to accurately identify your skin tone/type.

SKIN TONE CHART



TREATMENT SUMMARY



PATCH TEST

24 hours before treatment check for any reaction by testing a small area.

The patch test will confirm the maximum power level for your skin type.

Treat an area on each power level (e.g. arm, leg) up to the maximum power level for your skin type (see Skin Chart). Use the (+) button to increase the power level by a single step each time and work your way along the area with the unit on a different part of the skin each time.

If you feel any discomfort the previous power level is the maximum power level you should use.

A slight redness may occur, but not always, within an hour of treatment. However, if any redness remains after 24 hours this would indicate the power level selected was too high for your skin type.

IMPORTANT: Because skin colour varies on different areas of the body, you may find that you need different power level settings for different areas. Each area should be tested for the appropriate maximum power level.

SKIN CHART

| Skin Type | Skin Colour | Tanning History | Maximum Power Level |
|-----------|--------------------------|------------------------------|---|
| I | Very fair, "transparent" | Always burns, never tans | 1 2 3 4 5 |
| II | Fair | Always burns | Subject to patch test all 5 power levels can be used |
| III | Fair to light olive | Burns mildly | 1 2 3 |
| IV | Olive/Tanned | Rarely burns, tans with ease | Subject to patch test power levels 1, 2 and 3 can be used |
| V | Dark brown | Very rarely burns | NOT suitable for IPL treatment |
| VI | Black | Never burns | |

BEFORE YOU START

Please ensure you read and understand the 'Warnings' section before proceeding.

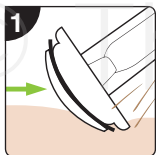
- Do not use any hair removal method that plucks the hair from the follicle, as this renders IPL ineffective.
- Remove all jewellery in the vicinity of the treatment area.
- Ensure you have patch tested the area to be treated 24 hours prior to treatment and are aware of your maximum power level.
- Your first treatment will always be on power level 1 and can only be increased by one level after a treatment is performed.

INCREASING THE POWER LEVEL

Each time you use your Evolution IPL Hair Remover you will need to do a treatment flash on each power level before you can increase the power to the next level. This is a safety feature to ensure you are aware of the treatment intensity at each level.

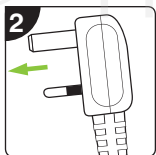
A self-check lasting a few seconds is performed whenever the power level is increased. During this time, the power levels will illuminate up and down.

INSTRUCTIONS FOR USE

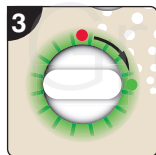


STEP 1
Important: Shave the area to be treated.

This ensures the light energy goes directly to the hair root and avoids hairs burning above the skin surface. Hairs that burn can also cause damage to the treatment head. If this happens, we recommend fitting a replacement.



STEP 2
Plug the unit into the mains.

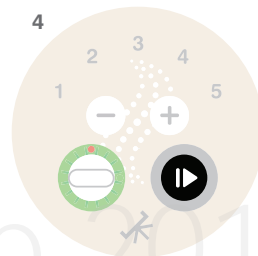
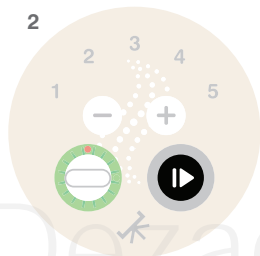
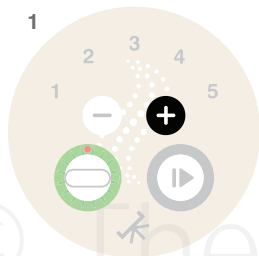


STEP 3
Insert the security key and turn clockwise to the ON position (aligned with the green dot). The light around the keyswitch will flash green.

INSTRUCTIONS FOR USE

STEP 4

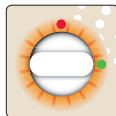
Enter the security code by pressing the buttons (highlighted in black) in the following order:



The keyswitch will stop flashing and illuminate green. A series of self-checks will be performed. During this time, the power levels will illuminate up and down.



When completed, the lowest power level will illuminate and the enable button will flash blue ready for selection.



Note: The unit will power off if the code is incorrectly entered (the keyswitch will change from flashing green to flashing orange). Turn the key anticlockwise to the OFF position, wait a few seconds and then turn the key back to the ON position and re-enter the correct security code.

INSTRUCTIONS FOR USE

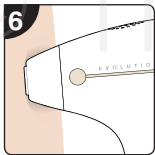


STEP 5

Press the enable button once.
The enable button will stop flashing.

Note: Each time the power setting is adjusted, you will need to press the enable button to continue.

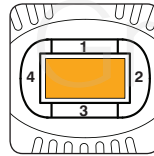
The indicator light will illuminate orange.



STEP 6

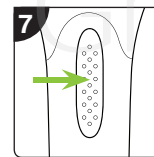
Place the unit over the area you wish to treat and apply pressure to ensure good contact with the skin.

When all 4 skin sensors have good contact with the skin, the indicator light will illuminate blue to indicate a treatment can take place.



Important: Ensure all 4 skin sensors are in contact with the skin, otherwise a treatment flash will not be possible.

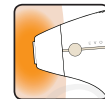
As you treat an area you may need to apply more pressure in certain places or adjust the angle of the treatment head on the skin to allow for the change in body shape.



STEP 7

Press the treatment button to initiate the treatment flash. It is quite normal to feel a warming of the treated area.

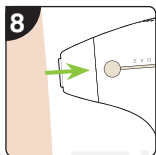
The unit will self-check after each flash. During this time the power level lights will illuminate up and down.



INSTRUCTIONS FOR USE

Notes

- Do NOT move the unit during treatment.
- The unit will become warm during use which is quite normal.



STEP 8

When moving the unit to the next area, the skin sensors must be lifted off the skin.



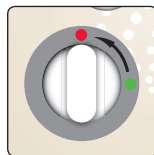
If you are increasing power for the next treatment, press the (+) button and return to step 5.

Important: Do NOT exceed the maximum power level for your skin type.

INCREASING THE POWER LEVEL

Each time you use your Evolution IPL Hair Remover you will need to do a treatment flash on each power level before you can increase the power to the next level. This is a safety feature to ensure you are aware of the treatment intensity at each level.






A self-check lasting a few seconds is performed whenever the power level is increased. During this time, the power levels will illuminate up and down.



AFTER USE

Turn the key anticlockwise to the OFF position. Remove and store the key in a safe place away from children.

ERROR CODES

| Indication | Problem / Solution |
|--|---|
|  <p>1 2 3 4 5</p> | <p>OVERHEAT PROTECTION</p> <p>Not a product fault. Unit should be left on (cooling fans will run) and allowed to cool. Continue treatment after 10–15mins.</p> |
|  <p>1 2 3 4 5</p> | <p>FAN ERROR</p> <p>Turn off using keyswitch, wait 5 seconds and turn on again.</p> |
|  <p>1 2 3 4 5</p> | <p>ENERGY SAVING MODE</p> <p>Turn off using keyswitch, wait 5 seconds and turn on again.</p> |
|  <p>1 2 3 4 5</p> | <p>INTERNAL FAULT</p> <p>Turn off using keyswitch, and contact our Customer Care department.</p> |
|  <p>1 2 3 4 5</p> <p>Unit appears to be in sleep mode</p> | <p>INCORRECT FITTING OF TREATMENT HEAD</p> <p>Install correctly and turn the unit OFF, wait 5 seconds and turn back ON.</p> |

If any of the problems in the table persist or the power level lights continue to flash, please contact our Customer Care department on 01242 702345.

FACIAL TREATMENT

The Evolution IPL Hair Remover can be safely used on the face within the area illustrated by the white dotted line.

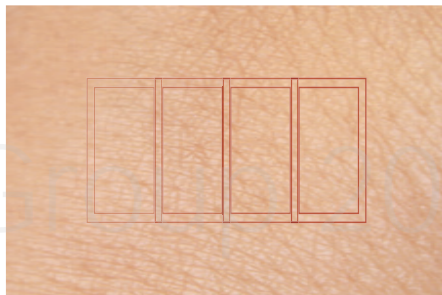
Important: It should not be used around the eyes or on the lips.



TREATMENT AREA

When moving the unit try and build up a grid-like pattern to ensure complete coverage.

Important: Do NOT repeatedly treat over the same area in a single session.



A white eyeliner pencil may also help by outlining areas to be treated.

Important: Do NOT use a dark eyeliner or felt pen to mark an area as this will react with the treatment flash and cause damage to the skin.

CHANGING THE BULB CARTRIDGE

The Evolution IPL Hair Remover contains a high performance bulb system. The performance of the bulb is checked after each treatment.

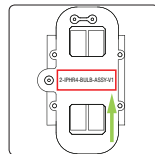


When there are 300 treatments remaining, the indicator light flashes yellow.

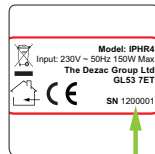


When the yellow light changes and illuminates red, the bulb must be changed.

Further bulb cartridges can be ordered using the accessory form or by calling our customer care department.

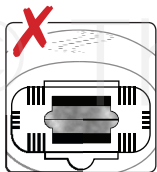


When ordering a new bulb cartridge, please quote the code printed on the cartridge.



...or the serial number from the rating label on the unit.

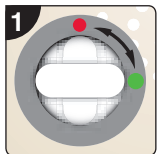
CHANGING THE BULB CARTRIDGE



Older bulb cartridges will degrade and not deliver an effective treatment. They may also damage the unit if not replaced.



Before fitting the new bulb cartridge, ensure the unit has been turned off for at least 5 minutes to allow it to cool.



STEP 1

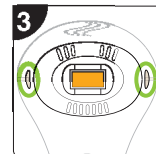
Turn on, and enter the security code.



STEP 2

Press and hold the (-) and (+) buttons together while the unit is self-checking. Power level 5 will illuminate.

Note: Steps 1 and 2 are important as this resets the treatment flash counter.

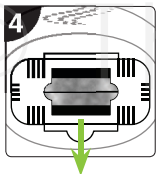


STEP 3

Press both treatment head release buttons and remove the treatment head.

The unit will automatically power off.

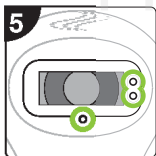
CHANGING THE BULB CARTRIDGE



STEP 4

Pull the old bulb cartridge out.

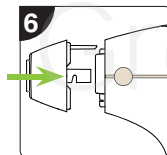
Important: Do NOT touch the bulb glass surfaces as these may be hot.



STEP 5

To fit the new bulb cartridge, ensure the connecting pins line up with the pin holes inside the unit.

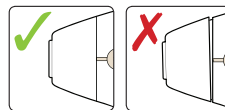
Push fully into place.



STEP 6

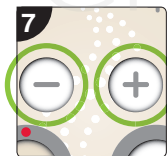
Ensure the treatment head is correctly aligned and push gently on.

The unit will automatically power on.



Ensure there are no gaps. If incorrectly fitted, the unit will enter sleep mode. Correctly fit the treatment head, turn the unit OFF, wait 5 seconds and turn

back ON to reset (see 'Error Codes' section).

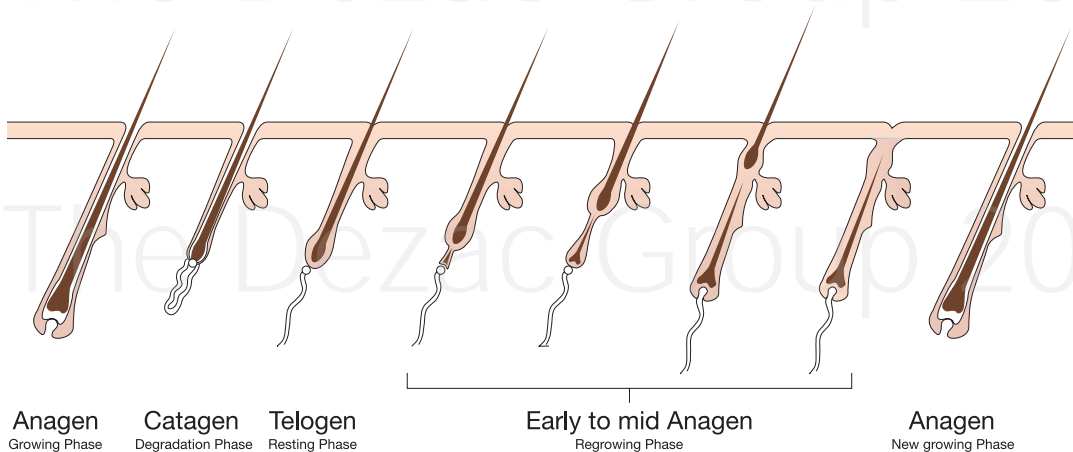


STEP 7

Press and hold the (-) and (+) buttons together. The bulb indicator light and power level 5 light will go out. The enable button will flash blue indicating the unit is ready for further treatments.

Note: The unit will not power on if the bulb is fitted incorrectly or missing.

THE HAIR GROWTH CYCLE



HOW MANY TREATMENTS ARE REQUIRED?

Everyone's hair grows differently, depending on age, weight, metabolism, hormones, ethnicity, medications and other factors. However, all hair goes through three distinct growth phases:

Active Growth phase (called the anagen phase), Degradation phase (catagen phase), during which the hair stops growing but is not yet shed, and the **Resting phase (telogen phase)**, when a hair falls out and a new hair begins to form.

IPL treatment is most effective when the hair is in the active growth phase. At any one time there is a percentage of hairs in the Active Growth phase (the actual percentage varies from one body area to another). With IPL gentle pulses of intense light are directed at the hair follicle to disable the hair root without affecting the surrounding area.

To catch all hairs in the Active Growth phase it is best to plan several treatments over a number of months (a minimum of six over six months). Thereafter a quick treatment every 4 to 6 weeks should ensure satin smooth skin every day.

| Body Site | Follicle Density per square cm | Resting Phase | Time in Resting Phase | Active Growth |
|------------|-----------------------------------|---------------|-----------------------|---------------|
| Face | 500 | 68% | 10 weeks | 30% |
| Arms | 80 | 18% | 5 months | 79% |
| Legs | 60 | 18% | 6 months | 79% |
| Armpit | 65 | 28% | 3 months | 69% |
| Chest/Back | 70 | 28% | 3 months | 69% |
| Pubic | 70 | 25% | 3 months | 71% |

QUESTIONS AND ANSWERS

How should I prepare my skin for IPL hair removal?

Ensure your skin is clean. IPL hair removal is most effective on pale skin. Sunbathing, use of sun beds and fake tanning should NOT be undertaken prior to treatment.

How should I prepare the hairs for IPL hair removal?

Shave the area to be treated. Minimising the length of the hair enables the light energy to go directly to the hair root and avoids hair burning on the surface of the skin.

What areas can I treat?

Most body hair can be removed using IPL - the most common areas are underarms, legs, chest, back and bikini line. Certain areas of the face can be treated, but it should not be used around the eyes or the lips. Refer to 'Facial Treatment' section before using on the face.

What does it feel like?

Most people experience a warming of the skin. Slight irritation similar to that of a minor sunburn may be felt if used on too high a power level, or if the area has not been shaved. Men undergoing the procedure experience greater discomfort as male body hair is generally thicker than women's, however the sensation quickly disappears.

Can I use IPL hair removal on sensitive skin?

Yes, the IPL reacts with the hair, so the surrounding skin should not be affected.

How will my skin appear after the treatment?

Usually there will be no perceptible change. A slight redness after treatment may occur, but will normally fade over 24 hours. There may be some localised redness around the hair follicle - this is quite normal. However, if any redness or inflammation remains after 24 hours this would indicate you have selected too high a power level for your skin type. Please refer to the 'Patch Test' section.

The unit does not appear to operate?

- Ensure the unit is plugged in and turned ON with the security key.
- Ensure there are no gaps. If incorrectly fitted, the unit will enter sleep mode. Correctly fit the treatment head, turn the unit OFF, wait 5 seconds and turn back ON to reset (see 'Error Codes' section).

QUESTIONS AND ANSWERS

After IPL hair removal is there anything to avoid?

Sun exposure or deep tanning should be avoided for at least 48 hours.

If the skin is exposed use a sunscreen. Also avoid using abrasive cleansers or skin peeling treatments. Avoid swimming in chlorinated water or using a hot tub for 48 hours. The chlorine in the water can result in itchiness.

How often should I repeat IPL hair removal treatment?

The timing for follow on treatments is not critical. We initially recommend treatments at 2 week intervals, although some people like to treat the area every week or even every other day to start with to clear any visible hair while others opt for just once a month.

Is there any aftercare routine I should follow?

If you wish, you can apply an unperfumed soothing lotion, an ice pack or wet towel to cool the treated areas, though we recommend not using soap on the treated areas for 24 hours. Take care to keep the treated area particularly clean for 3 days. When treating the underarms, avoid using antiperspirant deodorant for 2–3 days. Avoid unnecessary sun exposure for 48 hours.

How many treatments will I need?

Long term hair removal with IPL is generally considered to be effective after a minimum of six treatments over a period of 6 months. This varies from person to person and depends on the area you are treating. Dark hair on fair skin responds to IPL best, but both dark and fair hair may take several treatments for long-term results. Initially with each treatment you will notice a gradual thinning of hair in the treated area. To maintain hair free skin repeat the treatment every 4–6 weeks or as required.

Can I use other hair removal methods between treatments?

Because IPL treatment needs a hair to be present in the follicle, hair removal methods which pluck the hair, such as waxing, epilators and tweezing are NOT suitable for use between treatments. Bleaching hairs is also NOT suitable as it removes the pigment and renders IPL treatment ineffective. Shaving, micro-dermabrasion discs and cream depilatories are ideal for use between treatments.

QUESTIONS AND ANSWERS

What is the difference between IPL and a laser?

There are two big differences between Lasers and Intense Pulsed Light. Generally IPL covers a much larger area than the relatively small treatment spot with lasers and therefore treatments of larger areas are much quicker. The other difference is the wavelength of light produced. Lasers produce light with a specific wavelength whilst IPL uses a broad spectrum of wavelengths. This limits IPL to specific skin types.

How big is the treatment area?

20mm x 10mm

Why is it important to shave?

It is important that any area being treated is shaved so all the light energy is directed straight to the hair root for maximum effect. This also prevents burning of the hair above the skin surface which can be uncomfortable. Hairs that burn can also cause damage to the treatment head.

What safety features does it have?

The main safety feature regulates the power level, so that it can only be increased by 1 step per treatment, starting from power level 1. This reduces the risk of using too high a power level. Power can be decreased in as many steps as required.

Other safety features include:

- A keylock.
- A security code to prevent misuse.
- Skin sensors to ensure IPL treatment only occurs when good contact is made with the skin.
- A UV filter in the IPL aperture to avoid the risk of damaging UV light.
- Over temperature detection.

Are there any side effects?

As with all hair removers which use light energy, there may be slight reddening of the skin after use or lightening of the skin in patches. They should both disappear within 24 hours.

IMPORTANT

- When not in use store key(s) responsibly away from children.
- IPL treatment should not cause significant discomfort. You may feel a slight warming of the area. If you feel discomfort or soreness the setting may be too high.
- Do not cover the air vents during use.
- Do NOT use after drinking alcohol, if you are feeling unwell or fatigued.
- Do NOT use near to shortwave or microwave equipment.
- The equipment may be affected by electromagnetic interference. If such effects are suspected please turn off and turn back on to reset.
- Do NOT override any safety features.
- Do NOT use this product for any other purpose other than those described in these instructions.
- This product is for home-use. It is not intended for use in a commercial environment.

MAINTENANCE

- For effective treatment, ensure the orange IPL aperture and plastic surrounding is kept clean with a lint free cloth or cotton bud ensuring no fibres are left on the aperture. If hair is unshaved before treatment it may leave marks on the plastic which can't be removed. Eventually a new treatment head will be required - see accessories form.
- To clean the unit, wipe with a slightly damp cloth.
- Only use this product with the power lead supplied.
- After use, always unplug the power lead and store out of reach of children.
- If there is any damage to the unit or power lead, stop using immediately.
- If the power lead is damaged, it must be replaced by the manufacturer or its service agent or similarly qualified person in order to avoid a hazard.
- There are no user serviceable parts inside the unit or bulb cartridge. Do NOT disassemble or repair. If you have any problems using the product, contact our Customer Care department.

SPECIFICATION

UNIT:

Light So

60mm

Input:

230V AC ~ 50Hz 150W

ENVIRONMENT

Temperature:

Operating:

0 to 35 degrees Celsius

Storage:

-20 to 50 degrees Celsius

Humidity:

Operating:

10% to 60% RH

Storage:

5% to 90% RH

DISPOSAL



The Waste of Electrical and Electronic Equipment (WEEE) Directive (2002/96/EC) has been put in place to recycle products using best available recovery and recycling techniques to minimise the impact on the environment, treat any hazardous substances and avoid the increasing landfill.

The product is classed as Electrical or Electronic equipment so please ensure at the end of the life of this product and its treatment cartridge they are disposed of in the correct manner in accordance with local authority requirements. They must NOT be disposed of with household waste.

CUSTOMER CARE

If you have any questions, or if you experience any difficulties with this product, please call our Rio Careline on: **01242 702345** or email us at: **online@riobeauty.com**

To register your two year guarantee online visit: **www.riobeauty.com/warranty_online.htm**

© The Dezac Group 2012

© The Dezac Group 2012

© The Dezac Group 2012



UK



www.riobeauty.com

Rio, Dezac and EVOLUTION™ IPL Hair Remover are trademarks of The Dezac Group Ltd © The Dezac Group Ltd 2012
Manufactured by The Dezac Group Ltd, PO Box 17, Cheltenham, England GL53 7ET

1-IN-IPHR4-UK/1.0

PATENTS PENDING