

OWNER'S MANUAL

MUSICflow SH6

SMART Hi-Fi AUDIO

Wireless Multi-room Sound Bar

To view the instructions of advanced features, visit
<http://www.lg.com> and then download Owner's Manual.
Some of the content in this manual may differ from your unit.

MODEL
SH6

Safety Information



CAUTION: TO REDUCE THE RISK OF ELECTRIC SHOCK DO NOT REMOVE COVER (OR BACK) NO USER-SERVICEABLE PARTS INSIDE REFER SERVICING TO QUALIFIED SERVICE PERSONNEL



This lightning flash with arrowhead symbol within an equilateral triangle is intended to alert the user to the presence of uninsulated dangerous voltage within the product's enclosure that may be of sufficient

magnitude to constitute a risk of electric shock to persons.



The exclamation point within an equilateral triangle is intended to alert the user to the presence of important operating and maintenance (servicing) instructions in the literature accompanying the product.

WARNING: This product contains chemicals known to the State of California to cause cancer and birth defects or other reproductive harm. ***Wash hands after handling.***

WARNING: TO PREVENT FIRE OR ELECTRIC SHOCK HAZARD, DO NOT EXPOSE THIS PRODUCT TO RAIN OR MOISTURE.

WARNING: Do not install this equipment in a confined space such as a book case or similar unit.

CAUTION: Do not use high voltage products around this product. (ex. Electrical swatter) This product may malfunction due to electrical shock.

CAUTION: The device should not be exposed to water (dripping or splashing) and no objects filled with liquids, such as vases, should be placed on the device.

CAUTION: Do not block any ventilation openings. Install in accordance with the manufacturer's instructions.

Slots and openings in the cabinet are provided for ventilation and to ensure reliable operation of the product and to protect it from over heating. The openings shall be never be blocked by placing the product on a bed, sofa, rug or other similar surface. This product shall not be placed in a built-in installation such as a bookcase or rack unless

proper ventilation is provided or the manufacturer's instruction has been adhered to.

CAUTION: No naked flame sources, such as lighted candles, should be placed on the device.

NOTICE: For safety marking information including product identification and supply ratings, please refer to the main label on the bottom or the other surface of the product.

CAUTION

Only use the AC adapter supplied with this device. Do not use a power supply from another device or another manufacturer. Using any other power cable or power supply may cause damage to the device and void your warranty.

CAUTION concerning the Power Cord

Check the specification page of this owner's manual to be certain of the power requirements for this device. Overloaded wall outlets, loose or damaged wall outlets, extension cords, frayed power cords, or damaged or cracked wire insulation are dangerous. Any of these conditions could result in electric shock or fire. Periodically examine the cord of your device, and if its appearance indicates damage or deterioration, unplug it, discontinue use of the device, and have the cord replaced with an exact replacement part by an authorized service center. Protect the power cord from physical or mechanical abuse, such as being twisted, kinked, pinched, closed in a door, or walked upon. Pay particular attention to plugs, wall outlets, and the point where the cord exits the device. The Power Plug is the disconnecting device. In case of an emergency, the Power Plug must remain readily accessible.

This device is equipped with a portable battery or accumulator.

Safety way to remove the battery from the equipment:

Remove the old battery or battery pack, follow the steps in reverse order than the assembly. To prevent contamination of the environment and bring on possible threat to human and animal health, the old battery or the battery put it in the appropriate container at designated collection points. Do not dispose of batteries or battery together with other waste. It is recommended that you use local, free reimbursement systems batteries and accumulators. The battery should not be exposed to excessive heat such as sunshine, fire or the like.

FCC Compliance Statement

This device complies with part 15 of the FCC rules. Operation is subject to the following two conditions:

- (1) This device may not cause harmful interference, and
- (2) This device must accept any interference received, including interference that may cause undesired operation.

NOTE: This equipment has been tested and found to comply with the limits for a Class B digital device, pursuant to Part 15 of the FCC Rules. These limits are designed to provide reasonable protection against harmful interference in a residential installation. This equipment generates, uses, and can radiate radio frequency energy and, if not installed and used in accordance with the instructions, may cause harmful interference to radio communications. However, there is no guarantee that interference will not occur in a particular installation.

If this equipment does cause harmful interference to radio or television reception, which can be determined by turning the equipment off and on, the user is encouraged to try to correct the interference by one or more of the following measures:

- Reorient or relocate the receiving antenna.
- Increase the separation between the equipment and receiver.
- Connect the equipment into an outlet on a circuit different from that to which the receiver is connected.
- Consult the dealer or an experienced radio/TV technician for help.

CAUTION: Any changes or modifications not expressly approved by the party responsible for compliance could void the user's authority to operate this equipment.

FCC WARNING: This equipment may generate or use radio frequency energy. Changes or modifications to this equipment may cause harmful interference unless the modifications are expressly approved in the instruction manual. The user could lose the authority to operate this equipment if an unauthorized change or modification is made.

FCC RF Radiation Exposure Statement : This equipment complies with FCC radiation exposure limits set forth for an uncontrolled environment. This transmitter must not be co-located or operating in conjunction with any other antenna or transmitter. This equipment should be installed and operated with minimum distance 20 cm (7.8 inches) between the antenna and your body. Users must follow the specific operating instructions for satisfying RF exposure compliance.

FCC Radio Frequency Interference Requirements :

High power radars are allocated as primary users of the 5.25 to 5.35 GHz and 5.65 to 5.85 GHz bands. These radar stations can cause interference with and/or damage this device. This device cannot be colocated with any other transmitter.

CAUTION: Regulations of the FCC and FAA prohibit airborne operation of radio-frequency wireless devices because their signals could interfere with critical aircraft instruments.

Responsible Party :

LG Electronics USA, Inc. 1000 Sylvan Avenue
Englewood Cliffs, NJ 07632
TEL : +1-800-243-0000

IMPORTANT SAFETY INSTRUCTIONS

1. Read these instructions.
2. Keep these instructions.
3. Heed all warnings.
4. Follow all instructions.
5. Do not use this device near water.
6. Clean only with dry cloth.
7. Do not block any ventilation openings. Install in accordance with the manufacturer's instructions.
8. Do not install near any heat sources such as radiators, heat registers, stoves, or other device (including amplifiers) that produce heat.
9. Do not defeat the safety purpose of the polarized or grounding-type plug. A polarized plug has two blades with one wider than the other. A grounding type plug has two blades and a third grounding prong. The wide blade or the third prong are provided for your safety. If the provided plug does not fit into your outlet, consult an electrician for replacement of the obsolete outlet.
10. Protect the power cord from being walked on or pinched particularly at plugs, convenience receptacles, and the point where they exit from the device.
11. Only use attachments/accessories specified by the manufacturer.
12. Use only with the cart, stand, tripod, bracket, or table specified by the manufacturer, or sold with the device. When a cart is used, use caution when moving the cart/device combination to avoid injury from tip-over.



13. Unplug this device during lightning storms or when unused for long periods of time.
14. Refer all servicing to qualified service personnel. Servicing is required when the device has been damaged in any way, such as power-supply cord or plug is damaged, liquid has been spilled or objects have fallen into the device, the device has been exposed to rain or moisture, does not operate normally, or has been dropped.

Table of Contents

1 Getting Started

- 3 Safety Information
- 5 – IMPORTANT SAFETY INSTRUCTIONS
- 8 Main Features
- 8 Introduction
- 9 Front panel
- 9 Rear panel
- 10 Remote control
- 11 Installing the sound bar
- 11 Mounting the main unit on a wall

2 Connecting

- 13 Organizing cables
- 13 Connecting the AC Adapter
- 13 Connecting to your TV
 - 13 – Using an OPTICAL cable
- 14 – LG Sound Sync
- 15 – Using an HDMI cable
- 15 – Enjoy rich sound broadcast of the channel with the sound bar
- 16 – What is SIMPLINK?
- 16 – ARC (Audio Return Channel) function
- 17 – Additional information for HDMI
- 17 Optional equipment connection
 - 17 – HDMI connection
 - 18 – PORTABLE connection
 - 19 – OPTICAL connection
 - 19 – Connecting IR REPEATER
- 20 Initial Multi-Room Setup
 - 20 – Wired connection (MUSICflow Mesh Network Connection)
 - 20 – Wireless connection (Standard Wireless Connection)
- 20 Installing “Music Flow Player” App
 - 21 – Starting with Music Flow Player app
 - 21 – Simple Connection (EZ Setup)
- 23 Using Media Server for PC
 - 23 – Music Flow PC Software for windows
 - 24 – Nero MediaHome 4 Essentials for Mac OS
- 25 Connecting the speaker to your Home Network

- 25 – Connecting the speaker to your network with a LAN cable
- 27 – Connecting the speaker to your Network via the Wi-Fi Setup Method (Android)
- 30 – Connecting the speaker to your Network via the Wi-Fi Setup Method (iOS)
- 34 Connecting the speakers to your Home Network (Additional)
 - 34 – Connecting the additional speaker to your network with a LAN cable
 - 36 – Connecting the additional speaker to your network via the Wi-Fi Setup Method
- 38 Using the Bridge
 - 38 – Use as a root device (wired to the home router)
 - 39 – Use as a wireless extender

3 Operating

- 41 Enjoying the Music with Music Flow Player app
 - 41 – Overview of Home menu
 - 42 – Overview of the side menu
 - 43 – Playing a song
 - 44 – Overview of Playback
- 46 Different ways of listening to music
 - 46 – Group Playback
 - 47 – Surround Sound Mode (Home Cinema Mode)
 - 49 – Seamless playback
- 50 Using LG HomeChat
 - 50 – About LG HomeChat
 - 50 – How to start LG HomeChat
 - 51 – Usage Examples
- 52 Setting the Speaker with Music Flow Player app
 - 52 – Overview of setting menu
 - 53 – [General] Menu
 - 53 – [Speakers] Menu
 - 54 – [Alarms/Sleep Timer] Menu
 - 55 – [Music Library] Menu
 - 55 – [Account management] Menu
 - 55 – [Time Zone] Menu
 - 55 – [Advanced Settings] Menu
 - 57 – [Google Cast] Menu
 - 57 – [Version Info.] Menu
 - 58 – [Open source licenses] Menu
- 58 Using a Bluetooth Wireless Technology

58	– About Bluetooth
58	– Bluetooth profiles
58	– Listening to Music of a Bluetooth Device
60	Other operations
60	– DRC (Dynamic Range Control)
60	– AV Sync
60	– Using your TV remote control
60	– Turn off the sound temporarily
60	– Sleep timer setting
61	– Auto power down
61	– AUTO POWER On/Off
62	– Auto Display Off / Dimmer
62	Sound adjustment
62	– Adjust volume level automatically
62	– Adjust the Bass
62	– Night mode
63	Standby mode
63	– Standby mode
63	– Network standby mode
63	– Bluetooth standby mode
63	Reset the Speaker
63	– Resetting the speaker

4 Troubleshooting

64	Troubleshooting
64	– General
65	– Network
66	– Application and PC Software
66	– NOTES to use wireless

5 Appendix

67	File requirement
67	Trademarks and licenses
68	Specifications
69	About Status LED's Condition
70	Handling the Speaker
70	Important Information Relating to Network Services
71	TERMS OF USE

1

2

3

4

5

Main Features

Made for iPod/iPhone/iPad or Android device

Enjoys music from iPod/iPhone/iPad or Android device with simple connection.

LG Sound Sync

Controls volume level of this unit by the remote control of your LG TV that is compatible with LG Sound Sync.

Portable In

Listens to music from your portable device.

Music Flow Player application

Listens to music stored on your smart device.

You can control this speaker with your iPod touch/iPhone/iPad or Android device via Music Flow Player app. This speaker and your smart device must be connected to the same network. Visit "iTunes store" or "Google Play Store" or use the QR code shown below to search for "Music Flow Player" app. For detailed information, refer to page 20.



(Android OS)



(Apple iOS)

- Depending on the application's version and the settings of smart device, Music Flow Player app may not be operated normally.
- Some smart devices may not be compatible with this speaker.

Introduction

Symbol used in this manual



Note

Indicates special notes and operating features.



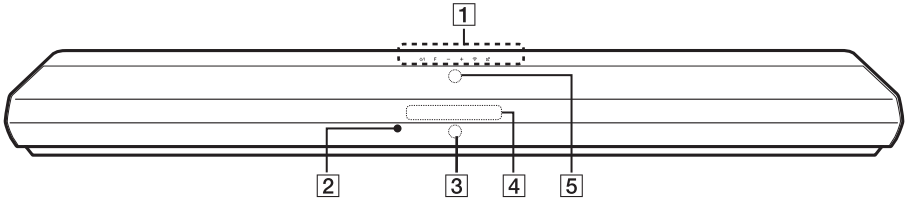
Caution

Indicates cautions for preventing possible damages from abuse.

Symbols

~	Refers to alternating current (AC).
==	Refers to direct current (DC).
⏏	Refers to class II equipment.
⏻	Refers to stand-by.
I	Refers to "ON" (power).
⚡	Refers to dangerous voltage.

Front panel



1 Touch Sensors

⏻ / | (Standby/On)

F (Function): Selects the function and input source. (OPTICAL / HDMI IN / WI-FI / BT READY / LG TV / PORTABLE)

- / + (Volume)



(Wi-Fi): Connects initial MUSICflow product to your network wirelessly.



(Add): Adds the additional MUSICflow product to your network.
(In case one or more MUSICflow products need to be connected.)

2 Remote sensor

3 LED indicator

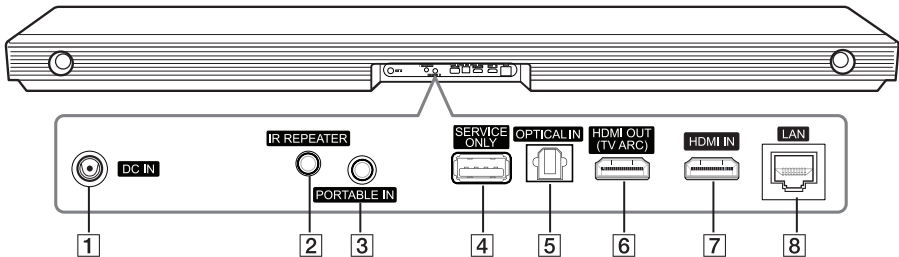
(Works when installed in standing way.)
Shows connection status.

4 Display window

5 LED indicator

(Works when installed in wall mounting way.)
Shows connection status.

Rear panel



1 DC IN (AC adapter input)

2 IR REPEATER

3 PORTABLE IN connectors

4 USB (Service only) : S/W download connector

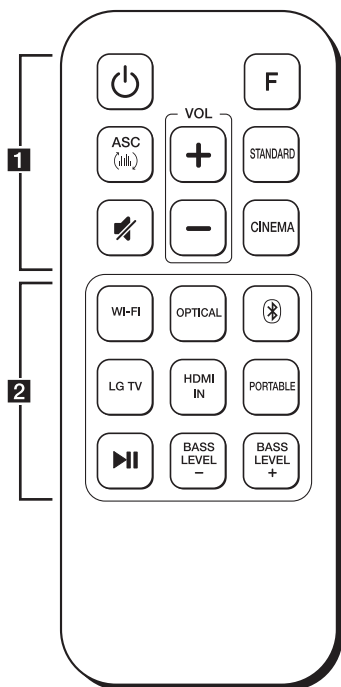
5 OPTICAL IN connectors

6 HDMI OUT (TV ARC) : Connect to HDMI IN (ARC) on TV.

7 HDMI IN

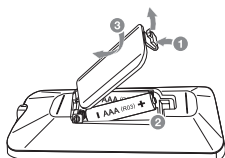
8 LAN port

Remote control



Replacement of Battery

Remove the battery cover on the rear of the remote control, and insert the battery with **+** and **-** matched correctly.



..... **1**

Power : Switches the unit ON or OFF. / Switches to the standby mode.

F : Selects the function and the input source.

ASC : Analyzes the property of input sound and provides the sound optimized for the content.

Mute : Mutes the sound.

VOL + / - : Adjusts speaker volume.

STANDARD : Selects the standardized sound.

CINEMA : Selects the cinematic surround sound.

..... **2**

WI-FI : Selects the WI-FI function.

- Press and hold **WI-FI** on the remote control for about 3 seconds, "ON - AUTO POWER" appears and AUTO POWER on function is turned on. (Page 61.)

OPTICAL : Selects the OPTICAL function.

- Press and hold **OPTICAL** on the remote control for about 3 seconds. "ON - TV REMOTE" appears and you can control this unit by your TV remote control. (Page 61.)

Bluetooth : Selects the Bluetooth function.

- Press and hold **Bluetooth** on the remote control for about 3 seconds, "ON - AUTO DISPLAY" appears and Auto Display off function is turned on. (Page 61.)

LG TV : Selects the LG TV function.

- Press and hold **LG TV** on the remote control for about 3 seconds, "OFF - AUTO POWER" is displayed.

HDMI IN : Selects the HDMI IN function.

- Press and hold **HDMI IN** on the remote control for about 3 seconds. "OFF - TV REMOTE" is displayed.

PORTABLE : Selects the PORTABLE function.

- Press and hold **PORTABLE** on the remote control for about 3 seconds, "OFF - AUTO DISPLAY" is displayed.

Play/Pause : Starts playback. / Pauses playback.

BASS LEVEL + / - : Adjusts sound level of Bass.

Installing the sound bar

You can hear the sound by connecting the unit to the other device: TV, Blu-ray disc player, DVD player, etc.

Place the unit in front of the TV and connect it to the device you want. (Refer to 13 - 19)



! Caution

- For best performance of wireless connection such as Bluetooth, do not install the unit on Metallic furniture because wireless connection communicates through a module positioned on the bottom of the unit.
- Be careful not to make scratches on the surface of the Unit when installing or moving them.

! Note

For the convenient button usage, it is recommended to have some distance between the soundbar and your TV when you install the sound bar.

Mounting the main unit on a wall

You can mount the main unit on a wall.

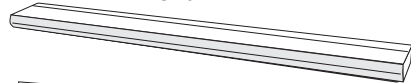


! Caution

Because it is difficult to make a connection after installing this unit, you should connect the cables before installation.

Preparation materials

Unit



Wall bracket install guide



Wall bracket



(Not supplied)

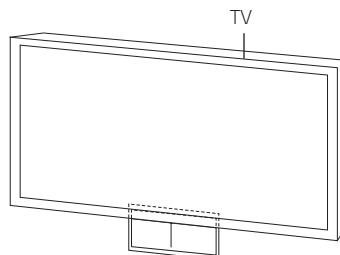
⚙️ ⚙️ Screws (A)



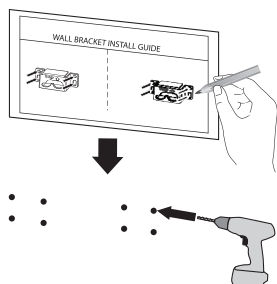
⚙️ ⚙️ Wall plug



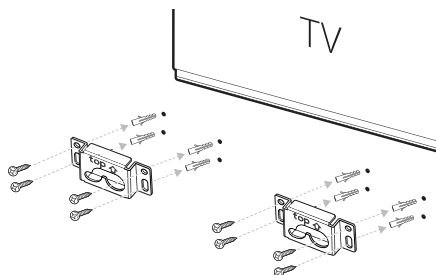
1. Match the TV's BOTTOM EDGE of Wall bracket install guide with the bottom of TV and attach to the position.



- When you mount it on a wall (concrete), use the wall plugs. You should drill some holes. A guide sheet (Wall bracket install guide) is supplied to drill. Use the sheet to check the point to drill.



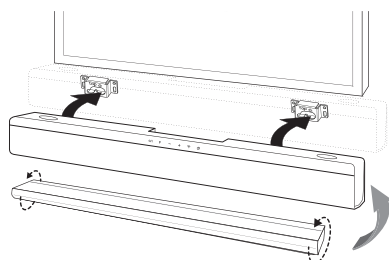
- Remove the Wall bracket install guide.
- Fix the brackets with screws (A) as shown in the illustration below.



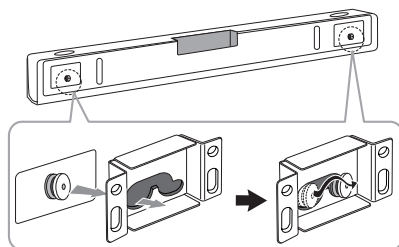
! Note

Screws (A) and Wall Plugs are not supplied for mounting the unit. We recommend the Hilti (HUD-1 6 x 30) for the mounting.

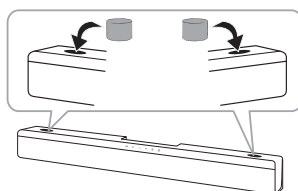
- Connect the bottom of the unit faced with the brackets on the wall.



- Fix the hooks of the unit on the brackets as shown below.



- If you want to protective inflow of foreign substance, insert foreign substance-protective sponge as shown below (optional).



! Note

To detach the unit, perform it in reverse order.

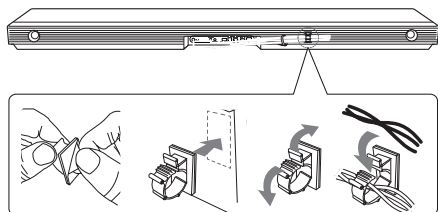
! Caution

- Do not install this unit upside down. It can damage the parts of this unit or be the cause of personal injury.
- Do not hang onto the installed unit and avoid any impact to the unit.
- Secure the unit firmly to the wall so that it does not fall off. If the unit falls off, it may result in an injury or damage to the product.
- When the unit is installed on a wall, please make sure that a child does not pull any of connecting cables, as it may cause it to fall.

Organizing cables

Organize the cable with cable holder.

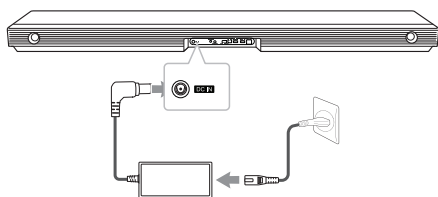
1. Remove the protective vinyl of the sticker.
2. Attach and fix the cable holder as shown below.
3. Insert cables to the cable holder and lock the cable holder.



Connecting the AC Adapter

Connect the speaker to the power supply with the supplied AC adapter.

1. Connect the supplied AC power cord to the AC adapter.
2. Connect the AC adapter cable to DC IN adapter input.
3. Plug the AC power cord into an AC outlet.



Caution

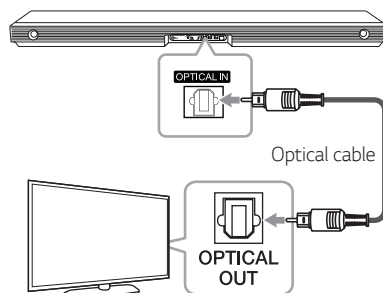
Only use the AC adapter supplied with this device. Do not use a power supply from another device or manufacturer. Using any other power cable or power supply may cause damage to the device and void your warranty.

Connecting to your TV

Please connect with this unit and TV using the optical digital cable or HDMI cable considering the state of the TV.

Using an OPTICAL cable

1. Connect the OPTICAL IN jack on the back of the unit to OPTICAL OUT jack on the TV using an OPTICAL cable.



2. Set the input source to OPTICAL. Press repeatedly **F** on the remote control or **F** on the unit until the function is selected.

Note

- You can enjoy the TV audio through the speakers of this unit. In the case of some TV models, you must select the external speaker option from the TV menu. (For details, reference your TV user manual.)
- Set up the sound output of TV to listen to the sound through this unit :
TV setting menu → [Sound] → [TV Sound output] → [External speaker (Optical)]
- Details of TV setting menu vary depending on the manufacturers or models of your TV.

LG Sound Sync

Sound Sync

You can control some functions of this unit by your TV's remote control with LG Sound Sync. It is compatible with the LG TV that is supported LG Sound Sync. Make sure of the LG Sound Sync logo on your TV.

Controllable function by LG TV's remote control :
Volume up/down, mute

Refer to the TV's instruction manual for the details of LG Sound Sync.

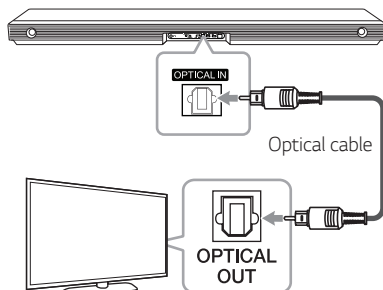
Make one of the following connections, depending on the capabilities of your equipment.

! Note

- You can also use the remote control of this unit while using LG Sound Sync. If you use TV's remote control again, the unit synchronizes with the TV.
- When the connection fails, make sure of the condition of the TV and power.
- Make sure of the condition of this unit and the connection in the cases below when using LG Sound Sync.
 - Turn off the unit.
 - Changing the function to the others.
 - Disconnecting the optical cable.
- The amount of time to turn off this unit is different depending on your TV when you set AUTO POWER function to ON.

With wired connection

1. Connect your LG TV to the unit by using an optical cable.



2. Set up the sound output of TV to listen to the sound through this unit :
TV setting menu → [Sound] → [TV Sound output] → [LG Sound Sync (Optical)]
3. Turn on the unit by pressing (Power) on the remote control.
4. Select OPTICAL function by using **F** on the remote control or **F** on the unit until the function is selected.

You can see "LG OPT" on the display window if connecting normally between this unit and your TV.

! Note

Details of TV setting menu vary depending on the manufacturers or models of your TV.

With wireless connection

1. Turn on the unit by pressing (Power) on the remote control.
2. Select LG TV function by using **F** on the remote control or **F** on the unit until the function is selected.
3. Set up LG Sound Sync (Wireless) on the TV. Refer to the TV's instruction manual.

"PAIRED" appears on the display window for about 3 seconds and then you can see "LG TV" on the display window if connecting normally between this unit and your TV.

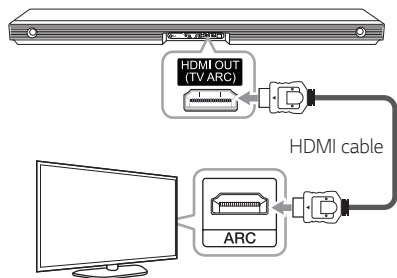
! Note

If you turned off the unit directly by pressing (Power), LG Sound Sync (Wireless) will be disconnected.

Using an HDMI cable

If you connect this unit to a TV that supports HDMI CEC and ARC (Audio Return Channel), you can enjoy the TV audio through the speakers of this unit without connecting the optical cable.

Connect the HDMI OUT (TV ARC) jack on the back of the unit to ARC jack on the TV using an HDMI cable.



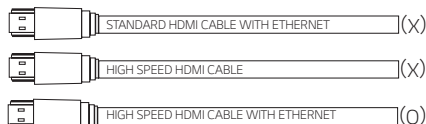
! Note

- HDMI CEC (Consumer Electronics Control): Using a single remote control, you have the ability to operate CEC compatible devices (TV, Sound Bar, Blue-ray player, etc.)
- You can also enjoy extra functions such as Bluetooth with **F** on remote control or **F** on this unit. When you go back to live TV channel after using the extra functions (Bluetooth) of this audio system, you should choose your preferred speaker on TV to enjoy the sound from this audio system again.

HDMI cable Checklist

Some HDMI cables do not support the ARC function, this can result in no sound output.

When connecting this unit to the TV, if there is no sound, there might be a problem with the HDMI cable. Therefore connect this unit to the TV and check whether the Type A, High speed HDMI™ Cable with Ethernet.



Enjoy rich sound broadcast of the channel with the sound bar

Connection through HDMI Cable*

Your television must support the newest HDMI features (HDMI CEC¹⁾ / ARC (Audio Return Channel) to fully enjoy the Live broadcasting channel with audio system through an HDMI cable. Unless your TV supports these HDMI features, the audio system should be connected through an OPTICAL cable.

1) HDMI CEC (High-Definition Multimedia Interface Consumer Electronics Control)

Consumer Electronics Control (CEC) is an HDMI feature designed to allow the user to command and control the CEC-enabled devices, that are connected through HDMI by using only one of their remote controls.

* Trade names for CEC are SimpLink (LG), Anynet+ (Samsung), BRAVIA Sync (Sony), EasyLink (Philips), etc.

What is SIMPLINK?



Some functions of this unit are controlled by the TV's remote control when this unit and LG TV's with SIMPLINK are connected through HDMI connection.

Controllable functions by LG TV's remote control : Power on/off, volume up/down, etc.

Refer to the TV owner's manual for the details of SIMPLINK function.

LG TV's with SIMPLINK function has the logo as shown above.

! Note

- Depending on the state of the unit, some SIMPLINK operation may differ from your purpose or not work.
- Depending on a TV or a player which is connected with this unit, SIMPLINK operation may differ from your purpose.

ARC (Audio Return Channel) function

The ARC function enables an HDMI capable TV to send the audio stream to HDMI OUT of the unit.

To use this function :

- Your TV must support the HDMI-CEC and ARC function and the HDMI-CEC and ARC must be set to On.
- The setting method of HDMI-CEC and ARC may differ depending on the TV. For details about ARC function, refer to your TV manual.
- You must use the HDMI cable (Type A, High Speed HDMI™ cable with Ethernet).
- You must connect the HDMI OUT (TV ARC) on the unit with HDMI IN of the TV that supports ARC function using an HDMI cable.
- You can connect only one Sound bar to TV compatible with ARC.

! Note

- ARC function is automatically selected when ARC signal comes in from TV, no matter what kind of the function you are using.
- You can enjoy the TV audio through the speakers of this unit. In the case of some TV models, you must select the external speaker option from the TV menu. (For details, reference your TV user manual.)
- Set up the sound output of TV to listen to the sound through this unit :
TV setting menu → [Sound] → [TV Sound output] → [External speaker (HDMI ARC)]
- Details of TV setting menu vary depending on the manufacturers or models of your TV.

Additional information for HDMI

- When you connect an HDMI or DVI compatible device make sure of the following:
 - Try switching off the HDMI/DVI device and this player. Next, switch on the HDMI/DVI device and leave it for around 30 seconds, then switch on this player.
 - The connected device's video input is set correctly for this unit.
 - The connected device is compatible with 720 x 576p, 1280 x 720p, 1920 x 1080i or 1920 x 1080p video input.
- Not all HDCP-compatible HDMI or DVI devices will work with this player.
 - The picture will not be displayed properly with non-HDCP device.

! Note

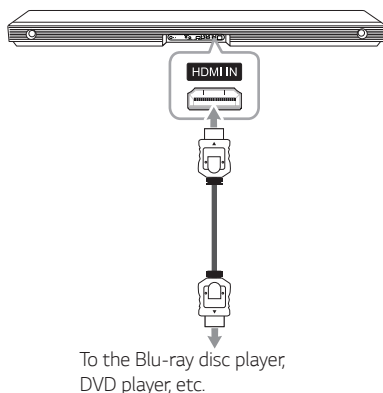
- If a connected HDMI device does not accept the audio output of the player, the HDMI device's audio sound may be distorted or may not output.
- Changing the resolution when the connection has already been established may result in malfunctions. To solve the problem, turn off the player and then turn it on again.
- When the HDMI connection with HDCP is not verified, TV screen is changed to black screen. In this case, check the HDMI connection, or disconnect the HDMI cable.
- If there are noises or lines on the screen, please check the HDMI cable (length is generally limited to 4.5 m).
- You cannot change the video resolution in the HDMI IN mode. Change the video resolution of the connected component.
- If the video output signal is abnormal when your personal computer is connected to HDMI IN jack, change the resolution of your personal computer to 576p, 720p, 1080i or 1080p.

Optional equipment connection

HDMI connection

For enjoying sound only

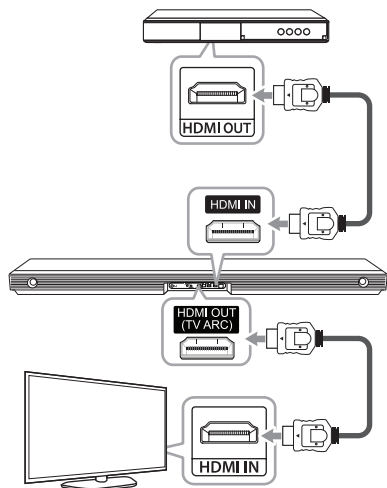
You can enjoy the sound from the external device you connect.



1. Connect HDMI IN jack on the back of the unit to HDMI OUT jack on the audio device such as Blu-ray disc player; DVD player; etc.
2. Set the input source to HDMI IN. Press repeatedly **F** on the remote control or **F** on the unit until the function is selected.

For enjoying both sound and picture

You can enjoy both sound and picture from the external device you connect.

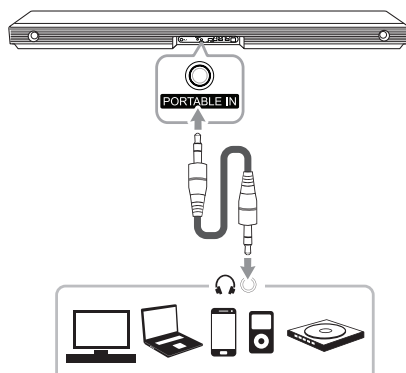


1. Connect HDMI IN jack on the back of the unit to HDMI OUT jack on the external device such as Blu-ray disc player, DVD player, etc.
2. Connect HDMI OUT (TV ARC) jack on the back of the unit to HDMI IN jack on the TV.
3. Set the input source to HDMI IN. Press repeatedly **F** on the remote control or **F** on the unit until the function is selected.

! Note

HDMI OUT jack is for TV connection. Even though PCM multi channel is inputted to the unit through an HDMI cable, the unit can only output 2 channel to TV.

PORTABLE IN connection



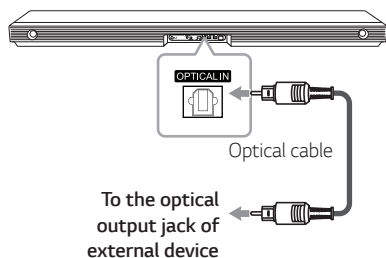
Listening to music from your portable player

The unit can be used to play the music from many types of portable players or external devices.

1. Connect the portable player to the PORTABLE IN connector of the unit.
2. Turn the power on by pressing **⏻** (Power).
3. Select the PORTABLE function by pressing **F** on the remote control or **F** on the unit until the function is selected.
4. Turn on the portable player or external device and start playing it.

OPTICAL IN connection

Connect an optical output jack of external devices to the OPTICAL IN jack.



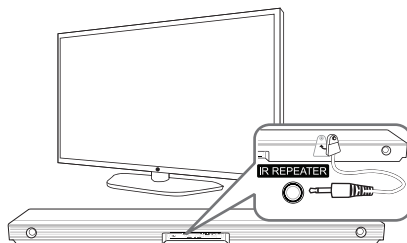
1. Connect the OPTICAL IN jack on the back of the unit to optical out jack of your TV (or digital device etc.)
2. Select the input source to OPTICAL by pressing **F** on the unit repeatedly, or pressing OPTICAL on the remote control or until the function is selected.
3. Listen to sound from the connected device.

Connecting IR REPEATER

IR Repeater is supplied as an accessory with the unit in order to communicate well with the remote control and the TV.

Remote control of your TV may not be operated if the unit hides the remote sensor of the TV.

You can solve the problem by connecting IR Repeater with LG TV.



1. Remove the protective vinyl of IR Repeater.
2. Put IR Repeater on the back of the unit with the sensor of IR Repeater facing the remote sensor of the TV.
3. Connect the end of IR Repeater to IR REPEATER jack.

Caution

- Do not block ventilation when you put IR Repeater on the unit.
- Do not disconnect the power cord. If you want to use IR Repeater, keep the unit on standby mode.

Note

- Depending on your TV, some or all buttons may not be function on the TV.
- It is recommended to attach an IR Repeater sensor on the rear panel of the unit.

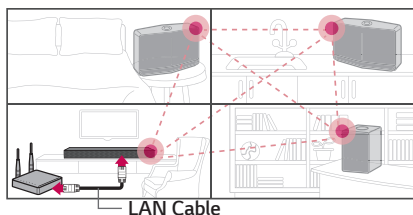
Initial Multi-Room Setup

When installing the MUSICflow product for the first time, you can choose two types of connection as below.

Wired connection (MUSICflow Mesh Network Connection)

Connect your speaker to the home router using LAN cable.

Then you can connect the additional MUSICflow products (Optional) to your home network wirelessly. Refer to "Connecting the speakers to your Home Network (Additional)" on page 34.



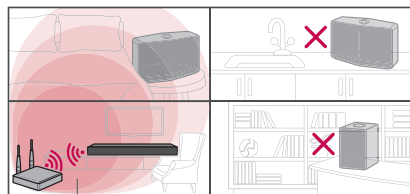
LAN Cable

Wireless connection (Standard Wireless Connection)

When the wired connection is unavailable between your speaker and home router, this unit offers music streaming service within home router's Wi-Fi coverage.

Connect one of the your speaker to the home router wirelessly.

Then you can connect the additional MUSICflow products (Optional) to your home network wirelessly. Refer to "Connecting the speakers to your Home Network (Additional)" on page 34.



Wireless signal

Installing "Music Flow Player" App

Through "iTunes store" or "Google Play Store"

1. Tap the "iTunes store" icon or "Google Play Store" icon.
2. Type in "Music Flow Player" in the search bar and tap "Search."
3. Select "Music Flow Player" in the search result list to download.

! Note

- Music Flow Player app will be available in version of the software as follow;
Android OS : Ver 4.0 (ICS) (or later)
iOS O/S : Ver 6.0 (or later)
- Depending on the device, "Music Flow Player" app may not work.

Through QR code

Install "Music Flow Player" app through QR code. Scan the QR code using the scanning application.



(Android OS)



(Apple iOS)

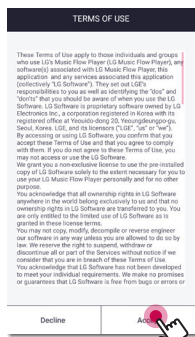
Note

- Make sure that your smart device is connected to the internet.
- Make sure that your smart device has a scanning application. If you don't have, download it from "iTunes store" or "Google Play Store."

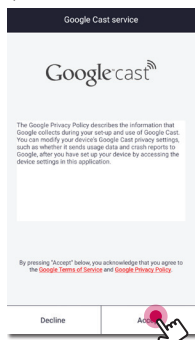
Starting with Music Flow Player app

When you launch Music Flow Player app for the first time, the terms of use and Google Cast Service appear on the screen.

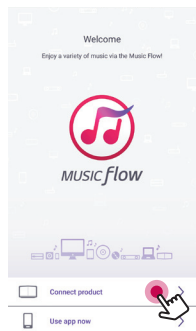
1. Check the contents of terms of use and select [Accept].



2. Check the contents of Google Cast Service and select [Accept].



3. Select [Connect product] to install the speaker you've purchased.



Refer to "Connecting the speaker to your Home Network" on page 25.

Note

If you want to return to the terms of use screen, initialize the Music Flow Player app on the smart device's setting menu.

Simple Connection (EZ Setup)

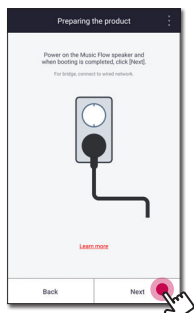
Preparation

- For Simple Connection, Wi-Fi network condition is needed.
- Make sure that the Bluetooth setting on your smart device is on.

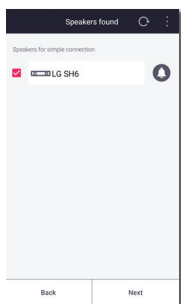
Note

- Simple Connection is supported by Bluetooth Ver 4.0 (or higher).
- If Simple Connection screen is not displayed on the screen, refer to "Connecting the speaker to your Home Network" on page 25.

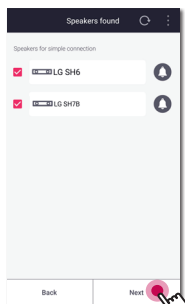
1. Plug in the desired device, and tap [Next].



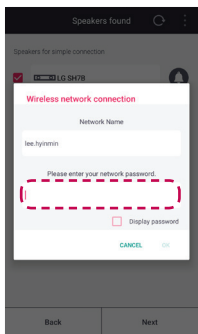
2. App searches for the speaker and connects it automatically. Tap [Next].



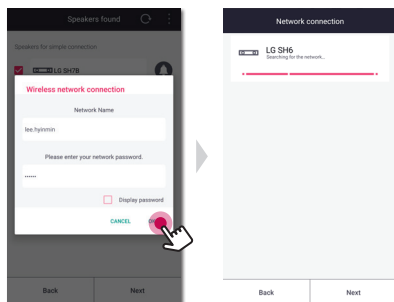
or



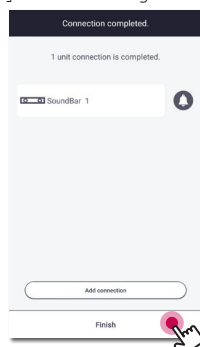
3. If the network password is set, security screen is displayed. Type the password.



4. After typing password, tap [Next].



5. Tap [Finish] to finish making the connection.



After finishing, TV connection screen is displayed. Follow the direction on the screen.

Using Media Server for PC

Media server Software allows users to access audio files stored in media server and enjoy them on this speaker via home networking.

Before connecting to PC to play a file, Media server Software should be installed on your PC.

! Note

Make sure that wireless network environment using a router is installed at your home.

- **Windows :** Music Flow PC Software
- **Mac OS :** Nero MediaHome 4 Essentials

Music Flow PC Software for windows

About Music Flow PC Software

Music Flow PC Software makes you enjoy the audio files stored on your media server (PC) via the speaker.

Downloading Music Flow PC Software

1. Start up your computer, visit <http://www.lg.com>. If necessary, select your region.
2. Click support tab.
3. Fill your model name on the cover of owner's manual in search bar.
4. Find and download the "Music Flow PC Software" file.

Installing Music Flow PC Software

1. Before installation, close all running programs including firewall and Anti-Virus programs.
2. Unzip and double-click "Setup.exe" to install Music Flow PC Software. The installation is prepared and the installation wizard appears.
3. Follow the directions of the installation wizard displayed on the screen.
4. Click the [Exit] button to complete the installation.

! Note

- Music Flow PC Software is not supported with Mac OS. In case of Mac OS, you can use the Nero MediaHome.
- The Music Flow PC Software is a customized software edition only for sharing files and folders to this speaker.
- If you want a full explanation about Music Flow PC Software, click the question marked icon on home menu.

System requirements (Windows PC)

- CPU : Intel® 2.0 GHz or AMD Sempron™ 2000+ processors
- Memory : 1 GB of free RAM
- Graphics card : 64 MB video memory, minimum resolution of 1024 x 768 pixels, and 16 bit color settings
- Free Disk Space : 200 MB
- Windows® XP (Service Pack 2 or higher), Windows Vista®, Windows® 7, Windows® 8.0, Windows® 8.1, Windows® 10
- Windows® Media Player® 11.0 or higher
- Network environment: 100 MB Ethernet, WLAN

Sharing music files

On your computer, you must share the folder contained music files to play them on this speaker.

This parts explains the procedure for selecting the shared folders on your computer.

1. Double-click the "Music Flow PC Software" icon.
2. Click [✖] icon in the upper-right-hand corner of the screen. The setting menu appears.
3. On the setting menu, click [📁] icon on the left to go to the sharing file menu.
4. On the sharing file menu, Click [📁] icon to open the [Browse Folder] window.
5. Select the folder containing the files you want to share. The selected folder is added to the list of shared folders.

Nero MediaHome 4 Essentials for Mac OS

About Nero MediaHome Essentials

Nero MediaHome 4 Essentials is a software for sharing video, audio and photo files stored on your computer to this speaker as a digital media server.

Downloading Nero MediaHome Essentials

1. Start up your computer, visit <http://www.lg.com>. If necessary, select your region.
2. Click support tab.
3. Fill your model name on the cover of owner's manual in search bar.
4. Find and download the "Nero MediaHome 4 Essentials" file.

Installing Nero MediaHome Essentials

1. Before installation, close all running programs including firewall and Anti-Virus programs.
2. Unzip and double-click NeroMediaHome.dmg file. In the Nero MediaHome window, drag the Nero MediaHome icon either to the Applications folder within the window or to any other desired location.
3. Follow the directions of the installation wizard displayed on the screen.
4. Click the [Exit] button to complete the installation.

System requirements (Macintosh)

- Mac OS X 10.5 (Leopard) or 10.6 (Snow Leopard)
- Macintosh computer with an Intel x86 processor
- Hard drive space: 200 MB hard drive space for a typical installation of Nero MediaHome standalone
- Memory: 256 MB RAM

Sharing music files

On your computer, you must share the folder contained music files to play them on this speaker.

This part explains the procedure for selecting the shared folders on your computer.

1. Double-click the "Nero MediaHome 4 Essentials" icon.
2. Click [Network] icon on the left and define your network name in the [Network name] field. The Network name you enter will be recognized by your player.
3. Click [Shares] icon on the left.
4. Click [Local Folders] tab on the [Shares] screen.
5. Click [Add] icon to open the [Browse Folder] window.
6. Select the folder containing the files you want to share. The selected folder is added to the list of shared folders.
7. Click [Start Server] icon to start the server.



Note

The network drive cannot configure the shared folder setting.

Connecting the speaker to your Home Network

Using a wired network provides the best performance, because the attached devices connect directly to the network without radio frequency interference.

Please refer to the documentation for your network device for further instructions.

Preparation

- Make sure that wireless network environment using a router is installed at your home.
- Make sure that the speaker and the smart device are connected to the same router.

Requirements

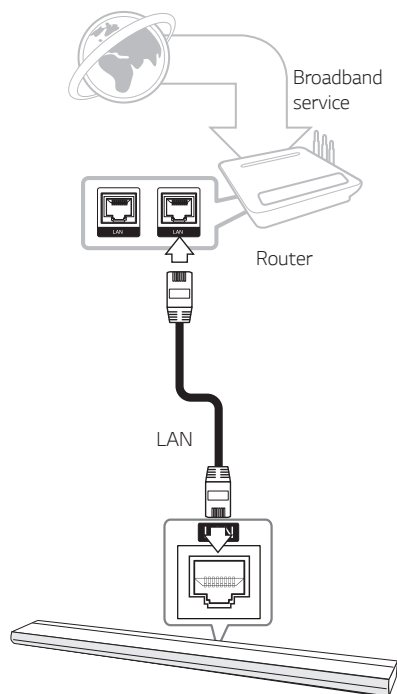
- Wireless router
- Smart device (Android or iOS)



Note

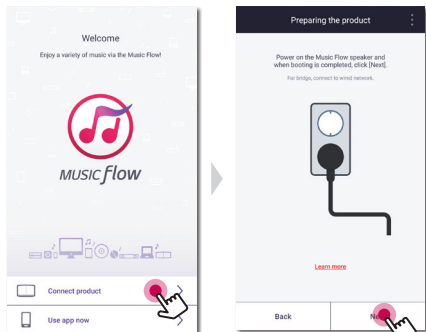
- Make sure that DHCP's server is activated on wireless router.
- If you cannot connect the speaker with your router, go to setting of the router and then make sure that "Allow wireless client to see each other and access my local network" box is unchecked.

Connecting the speaker to your network with a LAN cable

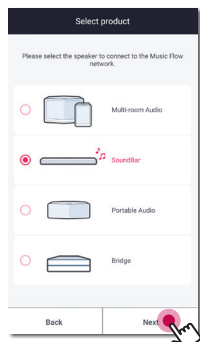
Connection overview



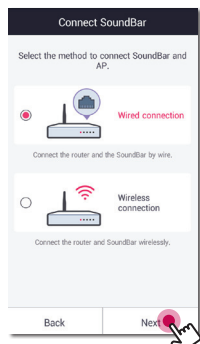
1. Turn on the unit by using  on the remote control or  on the unit. The LED indicator starts to blink in white.
2. On your smart device, launch Music Flow Player app. Select [Connect product] to install the speaker. Plug in the desired device, and tap [Next].



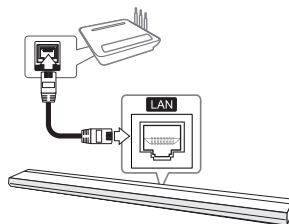
3. Select the product you want to connect and tap [Next] on the screen.



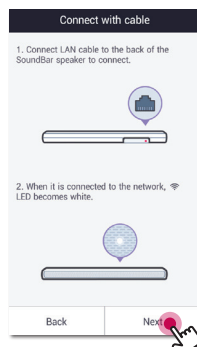
4. Select [Wired connection] on the screen.



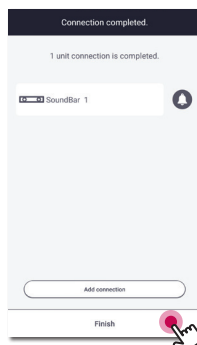
5. Connect one end of the LAN cable to the speaker's LAN port and connect the other end to your wireless router. Wait a moment until the LED indicator stops blinking and stays white.



6. Then select [Next] on the screen.

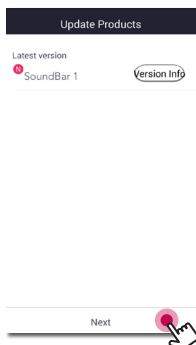


7. Select [Finish] to complete the connection.



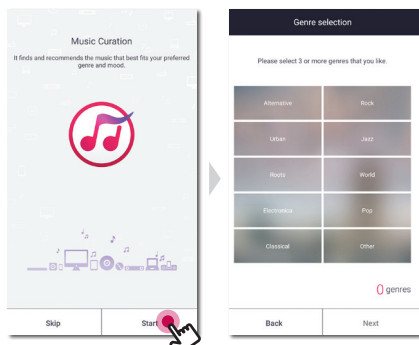
(If there is an update)

8. This application is checking the Version of software of your speaker and then shows the version.



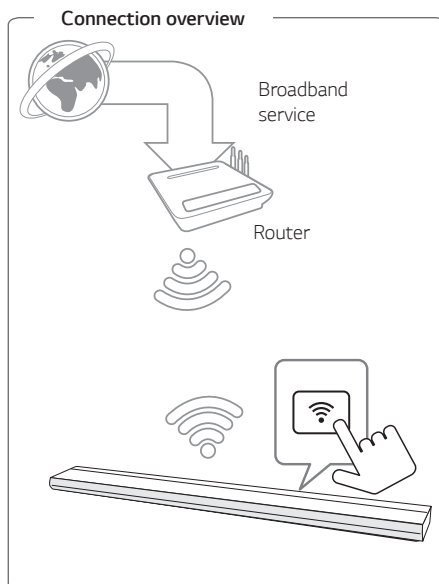
Select [Next] after checking the version information.



9. Select [Start] to curate your music on your smart device.

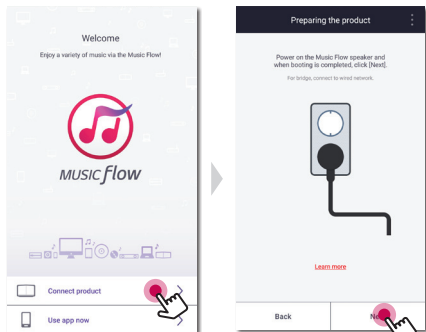
**! Note**

- You cannot use the speaker without a router. When using the wired router, you can control the speaker with Music Flow PC Software. (Page 23)
- The speaker and the smart device should be connected to the same router.

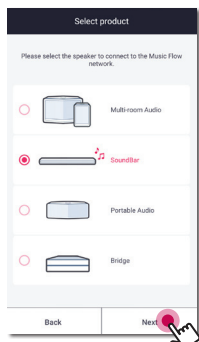
Connecting the speaker to your Network via the Wi-Fi Setup Method (Android)



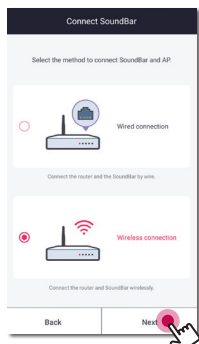
1. Turn on the unit by using  on the remote control or  on the unit. The LED indicator starts to blink in white.
2. On your smart device, launch Music Flow Player app. Select [Connect product] to install the speaker. Plug in the desired device, and tap [Next].




3. Select the product you want to connect and tap [Next] on the screen.



4. Select [Wireless connection] on the screen.

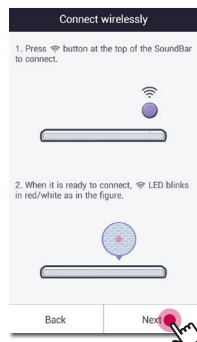


5. Then select [Next] on the screen.

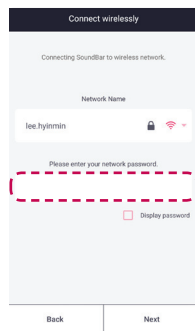
6. Press the  button on the unit. Then the LED indicator blinks in white and red alternately.



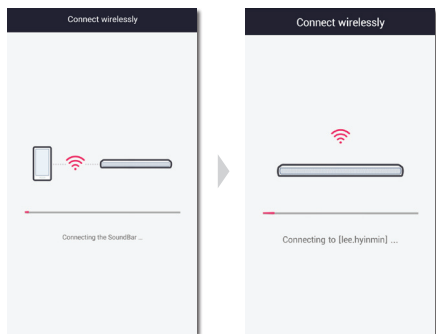
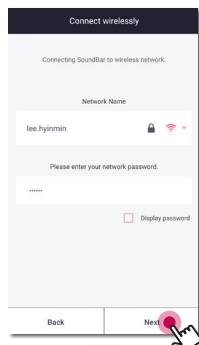
7. Then select [Next] on the screen.



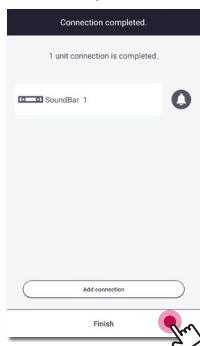
8. If you have a password for your network, the security screen appears on your smart device. Enter your password.



9. Then select [Next] on the screen.



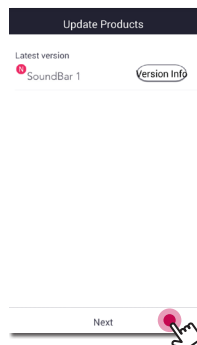
10. Select [Finish] to complete the connection.



After speaker connection, follow the instructions for TV connection.

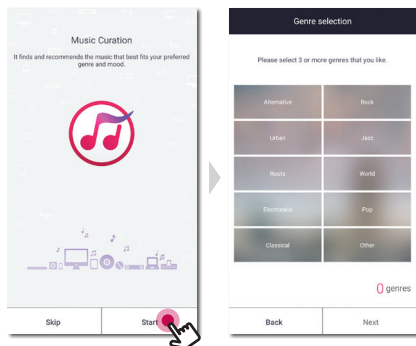
(If there is an update)

11. This application is checking the Version of software of your speaker and then shows the version.



Select [Next] after checking the version information.

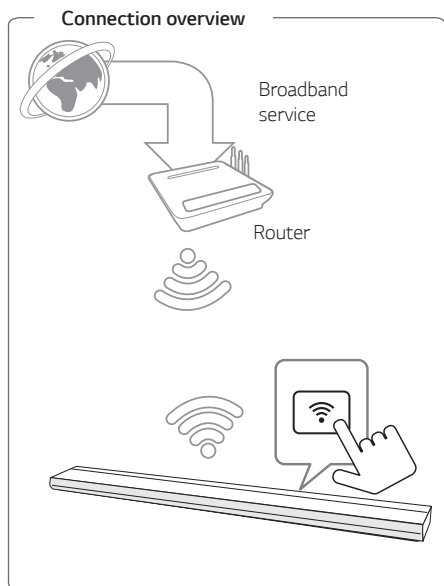
12. Select [Start] to curate your music on your smart device.



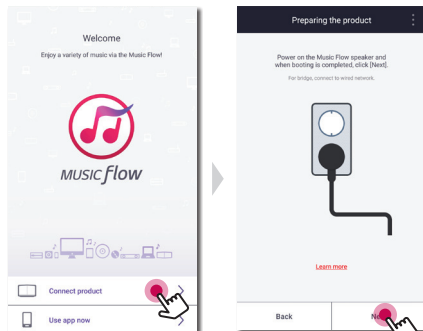
! Note

If the speaker fails to connect to your network or its network connection operates abnormally, place the speaker closer to your router and try again.

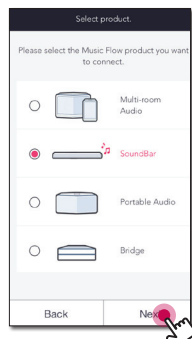
Connecting the speaker to your Network via the Wi-Fi Setup Method (iOS)



1. Turn on the unit by using on the remote control or on the unit. The LED indicator starts to blink in white.
2. On your smart device, launch Music Flow Player app. Select [Connect product] to install the speaker. Plug in the desired device, and tap [Next].




3. Select the product you want to connect and tap [Next] on the screen.

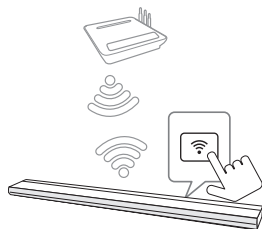


4. Select [Wireless connection] on the screen.

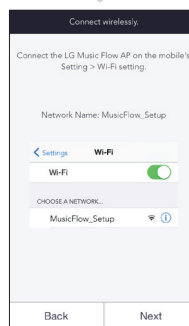
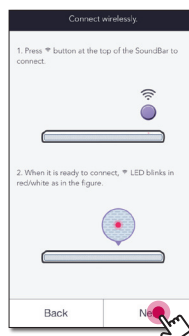


5. Then select [Next] on the screen.

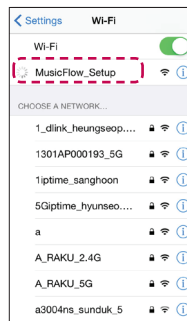
6. Press the  button on the unit. Then the LED indicator blinks in white and red alternately.



7. Then select [Next] on the screen.



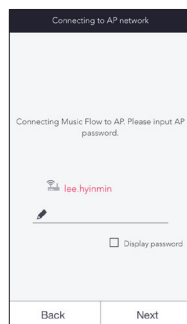
8. On your iOS device, go to iOS setting -> Wi-Fi setting and select "MusicFlow_Setup" to connect.



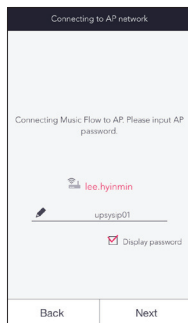
Note

- If "MusicFlow_Setup" is not on the list, scan for available Wi-Fi networks again.
- When your smart device is connected to "MusicFlow_Setup", you cannot use the internet.

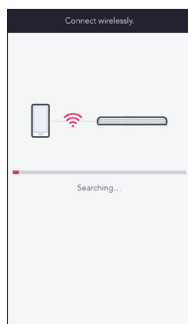
9. If you have a password for your network, the security screen appears on your smart device. Enter your password.



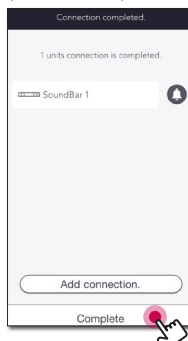
10. Then select [Next] on the screen.



11. Then select [Next] on the screen.



12. Select [Complete] to complete the connection.



! Note

If the speaker fails to connect to your network or its network connection operates abnormally, place the speaker closer to your router and try again.

Notes on Network Connection

- Many network connection problems during set up can often be fixed by re-setting the router. After connecting the speaker to the home network, quickly power off and/or disconnect the power cable of the home network router or cable modem. Then power on and/or connect the power cable again.
- Our company is not responsible for any malfunction of the speaker and/or the internet connection feature due to communication errors/malfunctions associated with your broadband internet connection or other connected equipment.
- The wireless network operate at 2.4 GHz radio frequencies that are also used by other household devices such as cordless telephone, **Bluetooth** devices, microwave oven, and can be affected by interference from them.
- Turn off all unused network equipment in your local home network. Some devices may generate network traffic.
- If the speaker fails to connect to your network or its network connection operates abnormally, place the speaker closer to your router and try again.
- Depending on your home network environment and the performance of wireless router, it may not work well to connect the speaker to your wireless router.
- You cannot connect the speaker to wireless router which has hidden SSID.
- The connection you've made may be disconnected if you select other application or change the setting of the connected speaker via "Music Flow Player" app. In such a case, please check the connection status.
- Even after connection of Music Flow Player app, music may be output from your smart device. In this case, select the connected speaker on the playback screen.
- Depending on the speed of your network, playback of online contents may not work well.
- Wireless signal interference may lead to disconnection of network or stopping playback.

- You need to turn the speaker's power off and on again if you restart the router.
- You need to perform a factory set and setup the network connection for speaker, if you install new router.
- If you use other characters than the english alphabet or digits for the SSID name of your access point or wireless router, it may be displayed differently.

Connecting the speakers to your Home Network (Additional)

You can enjoy the music with multiple speakers and single smart device you have.

Requirements

- Wireless router
- Smart device (Android or iOS)
- Another speaker

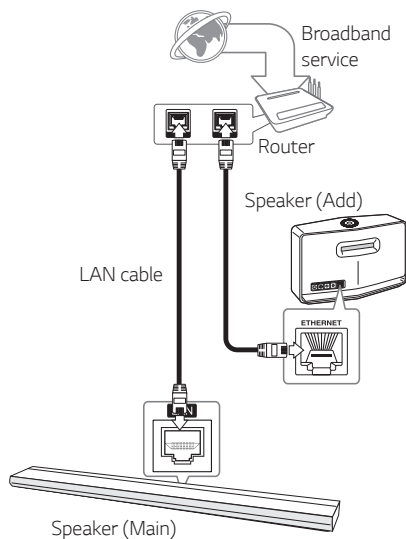


Note

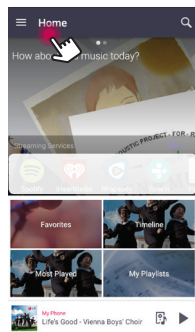
Signal interference may cause playback to stop.

Connecting the additional speaker to your network with a LAN cable

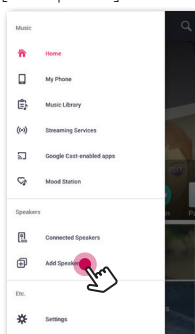
Connection overview




1. Connect the speaker (Main) to your network. Refer to "Connecting the speaker to your Home network" on page 25.
2. On your smart device, select the Music Flow Player app. Tap the [Home] menu.



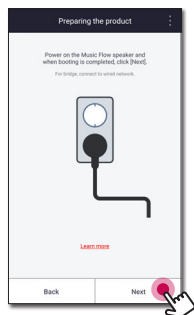
3. Select the [Add Speaker] on the side menu.



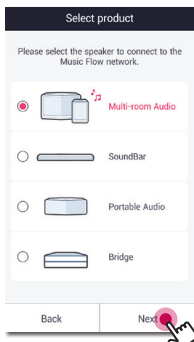
Note

You can also add another speaker by using  button on the screen of [Connected Speakers].

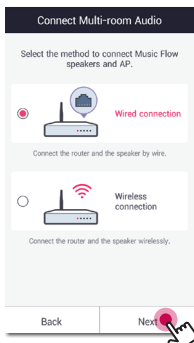
4. Plug in the desired device, and tap [Next].



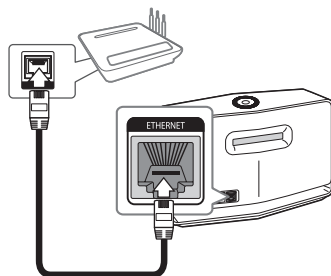
5. Select the product you want to connect and tap [Next] on the screen.



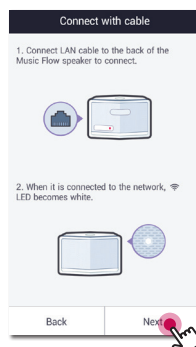
6. Select [Wired connection] on the screen.



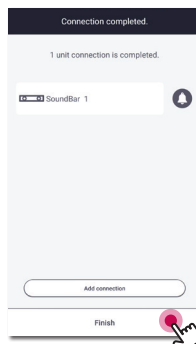
7. Connect one end of the LAN cable to the speaker's ETHERNET port and connect the other end to your wireless router. Wait a moment until the LED indicator stops blinking and stays white.



8. Then select [Next] on the screen.



9. Select [Finish] to complete the connection.

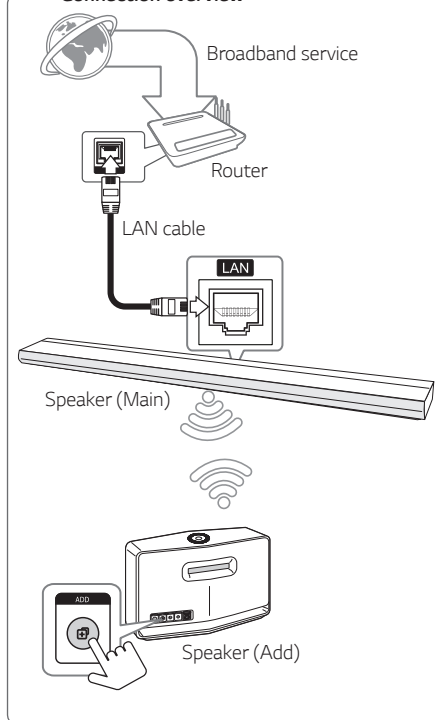


Connecting the additional speaker to your network via the Wi-Fi Setup Method

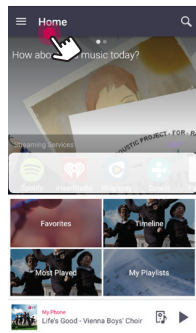
2

Connecting

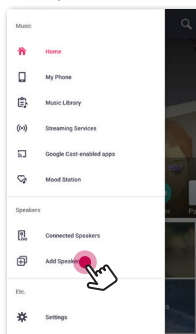
Connection overview




1. Connect the speaker (Main) to your network. Refer to "Connecting the speaker to your Home network" on page 25
2. On your smart device, select the Music Flow Player app. Tap the [Home] menu.



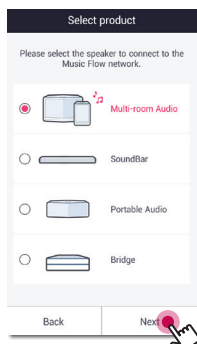
3. Select the [Add Speaker] on the side menu.



! Note

You can also add another speaker by using  button on the screen of [Connected Speakers].

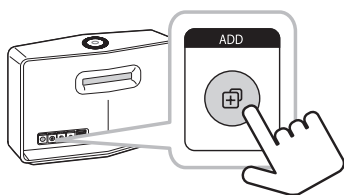
4. Select the product you want to connect and tap [Next] on the screen.



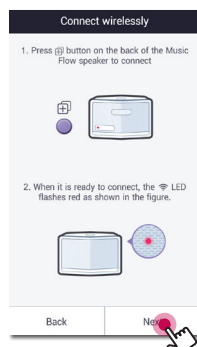
5. Select [Wireless connection] on the screen.



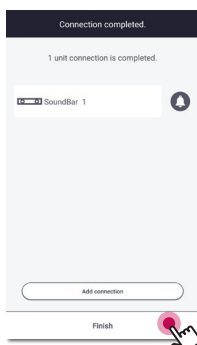
6. Press the **ADD** button on the rear of the speaker (Add). Then  Network status LED blinks red.



7. Then select the [Next] on the screen.



8. Select [Finish] to complete the connection.



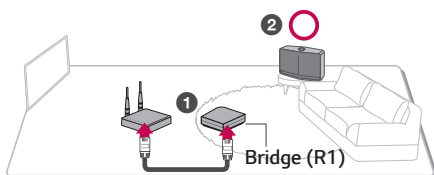
! Note

Speakers may be not connected if the distance between the Sound Bar (Main) connected by LAN cable and the speaker (Add) to be connected is too far.

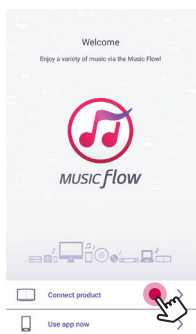
Using the Bridge

Use as a root device (wired to the home router)

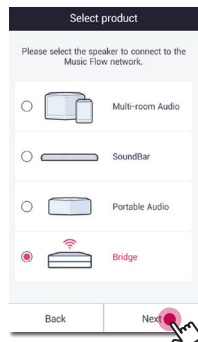
When your home router is located too far from any speaker location that is to be connected via wired mode, connect the **Bridge (R1)** to your home router with LAN cable.



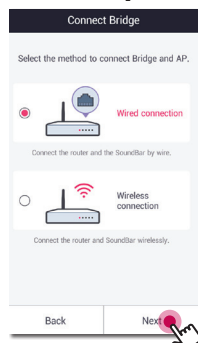
1. Attach the power cord to the power port on the rear of the **Bridge (R1)** and then plug the power cord into an electrical outlet.
2. The power LED on the front of **Bridge (R1)** turns on. On your smart device, launch Music Flow Player app. Select [Connect product] to install the speaker.



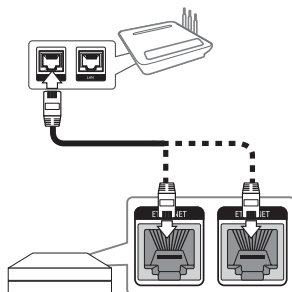
3. Select the [Bridge] and tap [Next] on the screen.



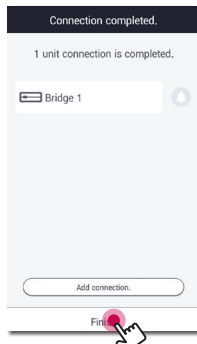
4. Select [Wired connection] on the screen.



5. Connect one end of the LAN cable to the Bridge's ETHERNET port, and connect the other end to your wireless router. Wait a moment until Network status LED stops blinking and stays white.



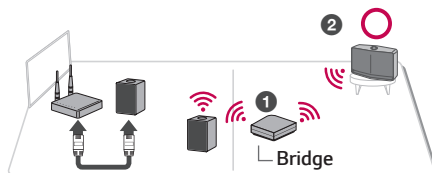
6. Select [Finish] to complete the connection.



7. Connect the speaker to Music Flow R1. Refer to the "Connecting the speakers to your Home Network (Additional)" on page 34.

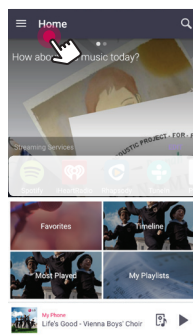
Use as a wireless extender

When you want to expand MUSICflow mesh network coverage, add the **Bridge (R1)** to your home network.

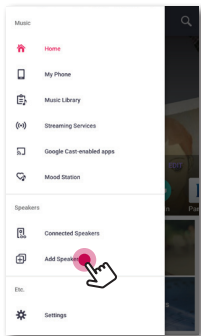


If you want to use this connection, Initial MUSICflow product is connected to your home router with LAN cable.

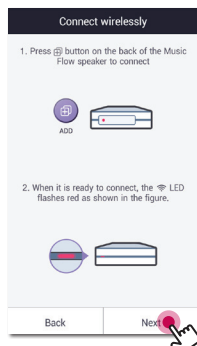
1. Attach the power cord to the power port on the rear of the **Bridge (R1)** and then plug the power cord into an electrical outlet.
2. The power LED on the front of **Bridge (R1)** turns on. On your smart device, select the Music Flow Player app. Tap the [Home] menu.



3. Select the [Add Speaker] on the side menu.

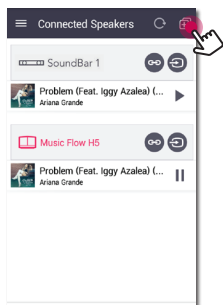


5. Then select the [Next] on the screen.

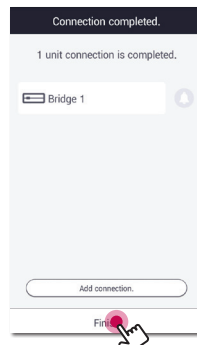


! Note

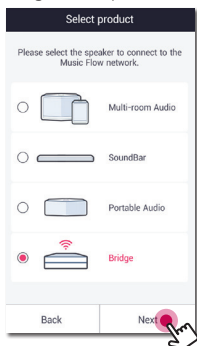
You can also add another speaker as below.



6. Select [Finish] to complete the connection.



4. Select the Bridge and tap [Next] on the screen.



Enjoying the Music with Music Flow Player app

With Music Flow Player app, you can play music in your smart device.

! Note

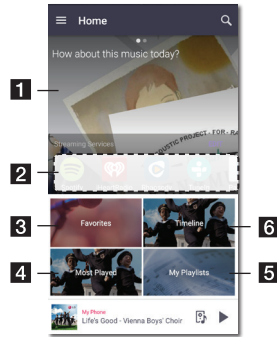
- For more detailed instruction about Music Flow Player app, switch on the [User Guide] in [Settings] > [General] on the side menu.
- Some of the content in this part may differ from Music Flow Player app depending on the application's version.

Preparation

1. Check the network connection with the speaker. (Page 25)
2. To use the speaker, you must download and install the Music Flow Player app. (Page 20)

Overview of Home menu

Launch Music Flow Player app on your smart device. The [Home] appears.



1 Recommendation – Click the sentence area to see the recommendation.

2 Streaming Services – Displays the online services. You can enjoy the online radio and music.

3 Favorites – Displays the favorites songs

4 Most Played – Displays the songs most played on this speaker.

5 My Playlists – Displays the playlists.

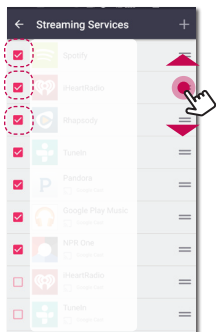
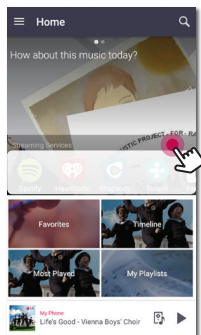
6 Timeline – Displays the songs played on this speaker.

! Note

Depending on your smart device's OS or version of "Music Flow Player" app, some of the content in this manual may differ.

Edit the Online streaming Service list

1. Launch Music Flow Player app on your smart device. The [Home] appears.
2. Tap the [EDIT] menu.



- Select the checkbox of the Online service you want to see on Home.
- Drag upwards or downwards to change the order of the Online service.
- Tap the **+**, add the online services.

In case of the Android device, you can add the online services among the installed apps in the device. If you select the added app, the app is run during the Bluetooth pairing operation.

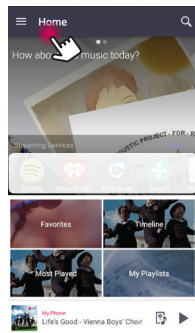
In case of the iOS device, when you connect the added app, you should set the Bluetooth connection for yourself.

! Note

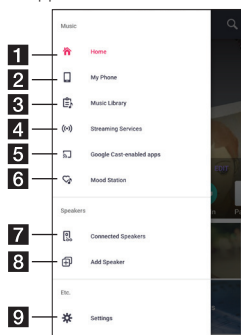
The displayed Online Streaming Services may vary depending on your region.

Overview of the side menu

1. Launch Music Flow Player app on your smart device. The [Home] appears.
2. Tap the [Home] menu.



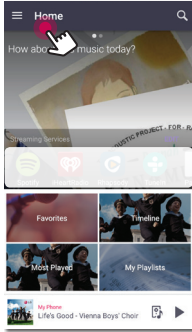
3. Side menu appears.



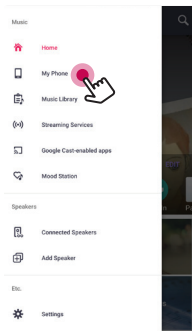
- 1 Home** – Displays the Home menu.
- 2 My Phone** – Displays the songs on this smart device.
- 3 Music Library** – Displays the songs on the connected devices (Media server).
- Streaming Services** – Displays the online services. You can enjoy the online radio and music.
- Google Cast-enabled apps** – Displays available apps on Google Cast.
- Mood Station** – Listens to preferred music among 15 mood themes.
- Connected Speakers** – Displays the connected speaker.
- Add Speaker** – Goes to the speaker installation screen.
- Settings** – Displays the settings menu.

Playing a song

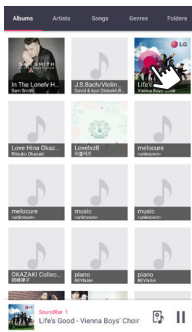
1. Launch Music Flow Player app on your smart device. The [Home] appears.
2. Tap the [Home] menu.



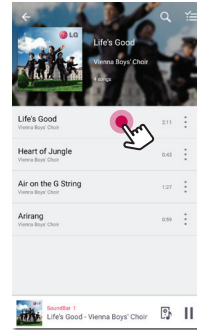
3. Side menu appears.
Select the [My Phone] on the side menu.



4. Select the desired album.

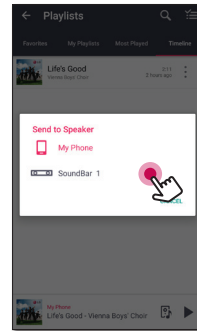


5. Select the desired song. Then selected song is displayed and played.



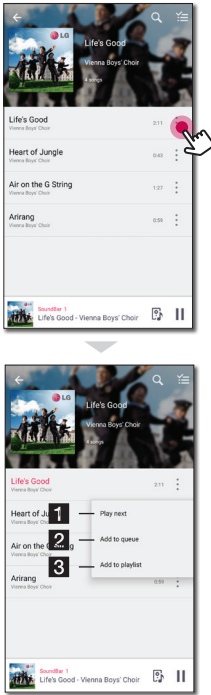
! Note

If the speaker is not selected, the selecting speaker pop-up appears. Select a desired speaker.



Managing a playlist

On an album screen, tap the [:] of the desired song. The pull down menu appears.



- 1 Play next** – Selects music to play next.
- 2 Add to queue** – Adds to queue list.
- 3 Add to playlist** – Adds to a desired playlist.

! Note

Depending on your wireless environment, playing a song with the speaker may not work smoothly.

Overview of Playback

You can confirm and adjust various information on the playback screen.



- 1** Displays the speaker that music plays through.

Displays current playing music.

- Repeats the desired contents. Every time you click it, the state changed in the (Repeat One) - (Repeat All) - (Repeat Off) order.
- 2**
 - Shuffles the music on the list. Music will be played in random order.

Adjusts playback.

- 3**
 - Adjusts the volume.
 - Pauses playback.
 - Skips fast backward or forward.
 - Adjusts the sound effect.

Tap the [:], various option appears.

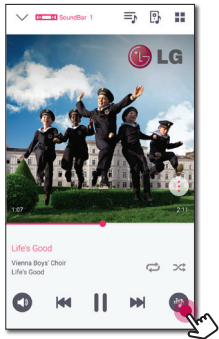
- Saves the music to the [Favorites]. You can find [Favorites] on [Home] tab
- 4** - Adds music to [My Playlist].
- Shares on the social network services.
- Searches for more music that is similar to the music being played.
- Edits the current playlist.
- 5** - Selects a speaker to play.
- Displays music menu.

Selecting Sound effect

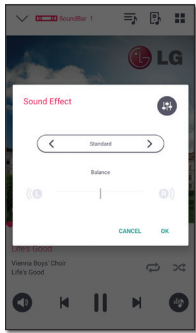
This speaker has a number of pre-set surround sound fields. You can select a desired sound mode by tapping [🔊].

The displayed items for the equalizer may be different depending on sound sources and effects.


1. During playback, tap the [🔊] as below.



2. Tap the < or >.



You can select the various sound effects.

Sound Effect	Description
ASC	Analyzes the property of input sound and provides the sound optimized for the content in real time.
Standard	You can enjoy optimized sound.
Cinema	You can enjoy more immersive and cinematic surround sound.
	You can set Treble and Bass value. The set value will be reflected to the overall sound effect.

! Note

- When you play the songs with smart device's speaker, the sound equalizer is not supported.
- You can also select a desired sound mode by using **ASC, STANDARD, CINEMA** on the remote control.
- In some of surround modes, some speakers, there's no sound or low sound. It depends on the mode of surround and the source of audio, it is not defective.
- You may need to reset the surround mode, after switching the input, sometimes even after the sound file changed.

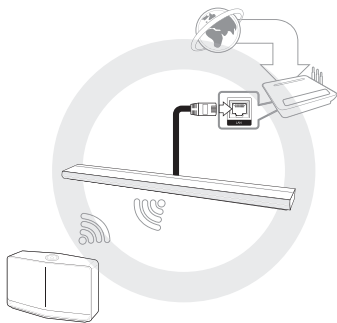
Different ways of listening to music

There are a number of differing ways of listening to music : Group, Surround and Seamless playbacks.

! Note

If you want to enjoy the group playback and Surround playback, it is recommended that at least one speaker is connected by LAN cable. To change speaker connection setting when all the speaker have been already connected wirelessly, reset all the speaker and connect again after connecting the one speaker of them.

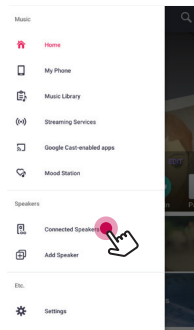
In the wireless connection, the smoothness of playback is subject to the location of installed speaker. Install the speakers at a short distance from the router. To enjoy the smooth group playback or surround playback wirelessly, it is recommended to use the router supporting 802.11n. In this case, set the router's security mode setting to OPEN or AES.



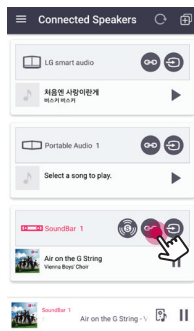
Group Playback

You can group multiple speakers linked to the Music Flow Player app and play the same music through all the connected speakers in the same group.

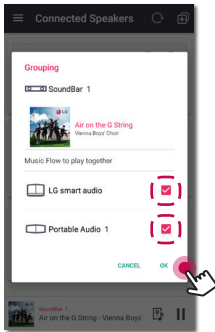
1. Select [Connected Speakers] on the side menu of Music Flow Player app.



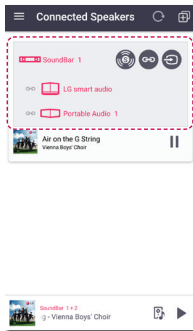
2. Connected speakers appear. Select the [] on the speaker desired song plays through.



3. Grouping option appears.
Tap the checkbox to select the speaker you want to play with. Then select [OK].



4. The speakers are ready to group playback.



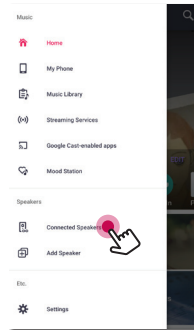
! Note

- If the speakers are not grouped, you can enjoy different music on each speaker.
- It is recommended to connect less than 5 devices for the smooth playback.
- The weak signal because of the long distance between speakers or wireless router and signal interference may cause abnormal playback.
- Depending on your wireless environment, the grouping may be broken.
- For smooth group playback, it is recommended to select the speaker connected by LAN cable as a master speaker. If you set the master speaker connected wirelessly, placed closer from the speaker connected wired.

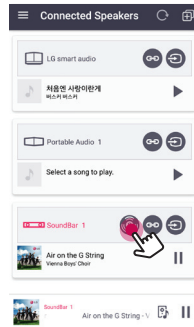
Surround Sound Mode (Home Cinema Mode)

Simply add a LG MUSICflow sound bar to your network and synchronize it with your LG MUSICflow speakers to enjoy a home cinema system experience.

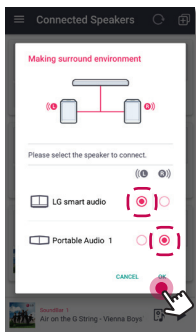
1. Select [Connected Speakers] on the side menu of Music Flow Player app.



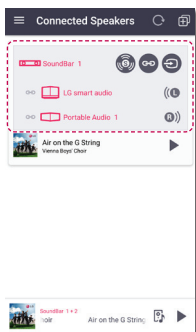
2. Connected speakers appear.
Select the [⊕] on the speaker.






3. Surround environment option appears. Select the left and right speakers by tapping connected speakers. Then select [OK].



4. The speakers are ready to surround playback.



! Note

- It is recommended to set the surround speakers to same models.
- The weak signal because of the long distance between speakers or wireless router and signal interference may cause abnormal playback.
- Depending on your wireless environment, the grouping may be broken.
- For smooth playback, it is recommended to select the speaker connected by LAN cable as a master speaker. If you set the master speaker connected wirelessly, placed closer from the speaker connected wired.
- To enjoy the home cinema system without Music Flow Player app, follow the below steps.
 1. Plug in the Sound bar
 2. The Sound bar connect to the home network. (wired or wireless)
 3. Plug in the rear speakers.
 4. The rear speakers connect to the home network. (wired or wireless)
 5. Press the sound bar's  (Add) button and then press the left rear speaker's  (Add) button. After left rear speaker connection, press the right rear speaker's  (Add) button.
 6. When the speaker setting is complicated, surround sound mode is set automatically.
- If the home cinema mode configure with retained product, updates the speaker to the latest version.
- Check every speaker's network connection when you cannot set the speakers. If the speakers are not connected to the home network, refer the "Connecting the speaker to your Home Network".

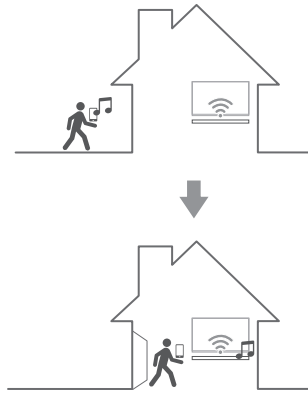
Seamless playback

You can easily change the playing speaker from your smart device or the speaker to the another speaker without pause.

! Note

- It is not supported when you go out of the house with your smart device.
- Wi-Fi function on smart device must be turned on.
- If the source is Portable In and Bluetooth, seamless play is not supported. (Media server and online streaming service are supported.)
- In case of the online streaming service, the music you are listening to is played from the beginning.
- On seamless play, each speaker keeps its existing volume value. If no sound coming out from the speaker during playback, check the switched speaker's volume is set to 0.

Changing playing speaker from a smart device to a speaker



1. If the smart device playing music is carried from outside to a room where the connected speaker is in, the pop-up window on the smart device will appear to ask you which speaker you want to play music through.
2. Select the speaker on the pop-up list, the music you are listening to is played through without a pause.

Using LG HomeChat

! Note

- For more information, see <http://homechat.lge.com>.
- Depending on the region, the LG HomeChat service may not be available.

About LG HomeChat

- What kind of service is LG HomeChat?
- LG HomeChat service enables users to chat with Smart home devices in a friendly, daily language through mobile messenger LINE.
- What kind of audio functions does LG HomeChat provide?
- Control : Play, Pause, Mood Station, Volume Settings, Shuffle, Repeat, Alarm/Sleep Timer, etc.
- Monitoring : Audio Status, View Alarm(s)/Sleep Timer(s)
- Situation Scenario : Coming home, Sleeping and Party mode

! Note

Supported LG HomeChat functions may vary over time.

How to start LG HomeChat

Step 1. Install LINE

Please check if "LINE" application is installed on your mobile device, and if not, search and install "LINE" from your application market(Google Play Store, Apple App Store, etc.).

! Note

Additional data charges may occur if installed over 3G/4G, according to your device plan.

Step 2. Adding LG HomeChat as a friend on LINE

1. Launch LINE and tap "More > Official Accounts" button.
2. Find "LG HomeChat" from the list or search for "LG HomeChat" through search function and select it.
3. Add "LG HomeChat" as friend, and you are ready to chat with LG HomeChat.

Step 3. Agree to Service Terms and Conditions

1. Please tap the Terms and Conditions link in your LG HomeChat conversations.
2. Please confirm your age. (Age requirements may vary for different countries.)
3. Read our terms and conditions, check off the three boxes, and tap the "I Agree" button.

! Note

For safe device control, LG HomeChat does not allow service to young children. Please make sure young children do not use LG HomeChat service.

Step 4. Connect audio to LG HomeChat

1. To control your home device(s) through HomeChat, you need to make sure that the smart device installed Music Flow Player and the speaker are connected to the same Wi-Fi network and first register your speaker. Enter "Register" for a link for product registration.
If you haven't installed Music Flow Player app already, refer to Installing "Music Flow Player" App on page 20.
2. Click the audio button to connect product(s) registered to Music Flow Player to LG HomeChat. (For a pop-up asking for app install on Android's KitKat version, tap "yes")
3. Product(s) with "Available" displayed on the right is available for LG HomeChat service. Select product(s) you wish to connect to LG HomeChat, and tap "next".
4. Connection successfully completed! Tap "Return to LG HomeChat Conversations" and chat with your product(s).

Step 5. Use LG HomeChat

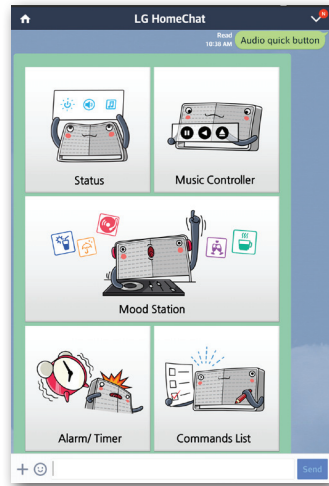
1. Call "Audio" to give command(s). Enter "Audio What's on now?" or "Audio Status" to check current status of your audio.
2. Enter "Audio Commands" or "Audio Help" to see the list of audio key functions and command short-keys.

! Note

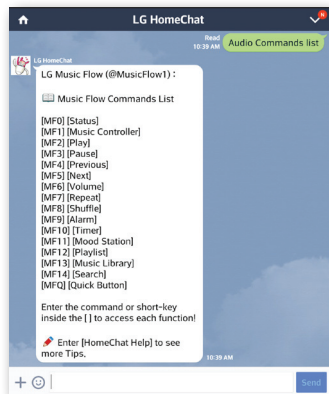
- If you have any questions during LG HomeChat use, enter "Help" for various user's manuals.
- For questions regarding products, contact LG Electronics Service Center for a faster response.

Usage Examples

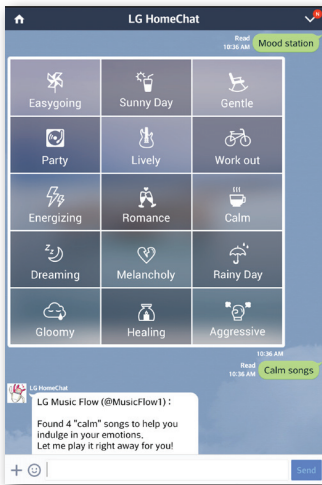
Audio quick button



Audio Commands list



Mood station

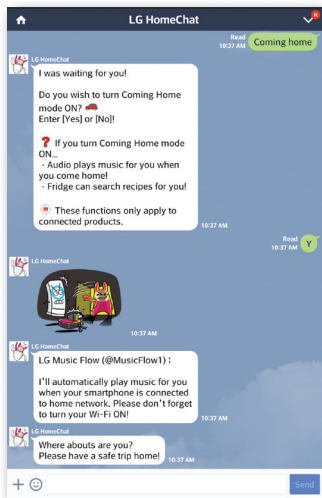


Analyzes the songs in Music Library using Gracenote, and organizes them according to Mood.

Note

The organization may not be correct depending on the audio file.

Coming home



Setting the Speaker with Music Flow Player app

With Music Flow Player app, you can set the connected speaker in your smart device.

Note

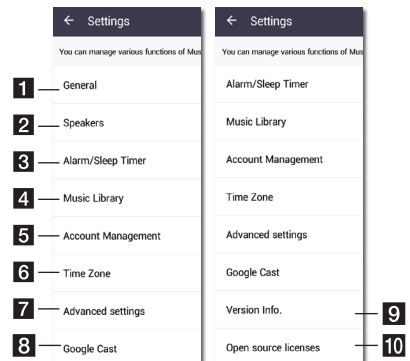
- For more detailed instruction about Music Flow Player app, switch on the [User Guide] in [Settings] > [General] on the side menu.
- Some of the content in this part may differ from Music Flow Player app depending on the application's version.

Preparation

- Check the network connection with the speaker. (Page 25)
- To use the speaker, you must download and install the Music Flow Player app. (Page 20)

Overview of setting menu

- Launch Music Flow Player app on your smart device.
- Select [Settings] on the side menu.



1 General – Sets for easier use of the speaker.

2 Speakers – Sets connected speaker.

3 Alarms/Sleep Timer – Wakes on and off the speaker at a designated time.

4 Music Library – Manages the music library Library.

- 5 **Account Management** – Manages social networking service and streaming services.
- 6 **Time zone** – Sets time zone.
- 7 **Advanced settings** – Displays the Advance settings menu. (Page 55)
- 8 **Google Cast** – Displays the Google cast menu.
- 9 **Version Info.** – Updates the speaker to the latest version.
- 10 **Open source licenses** – Shows LGE Open Source Software Notice.

[General] Menu

Sets for easier use of the speaker.

Lock Screen Setting (Android only)

This function allows you to display the Music Flow Player on the lock screen. (Lock screen setting is [ON] by default.)



Note

[Lock Screen Setting] may differ from Music Flow Player app depending on the application's version.

User Guide

This function allows you to display or delete the guide on the menu.

Music Curation

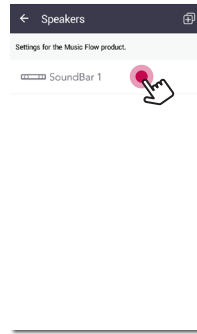
Goes to the music curation.

Gesture

When this function is on, you can easily continue playback your music by simply shaking your mobile.

[Speakers] Menu

You can adjust speakers connected to your network.



- 1 — Rename
- 2 — Speaker LED ☒
- 3 — IP Info.
192.168.0.36
- 4 — Compressed sound transmission
It transmits compressed sound source for smooth playback when performing group playback. Auto
- 5 — DRC ☐
- 6 — Night ☐

- 7 — Auto Volume On/Off
It prevents sudden increase of volume. ☐
- 8 — AV Sync Ons
- 9 — Auto Display On/Off
Inactivity will cause the display to turn off automatically. ☒
- 10 — Auto Power On/Off
Sound Bar is turned on and off according to TV status. ☒
- 11 — Bluetooth standby mode
It enters standby mode in order for the Bluetooth device to connect even when the network is not available. ☐
- 12 — Connect SoundBar and TV
You can easily connect TV and Sound Bar.
- 13 — Using the TV remote control
Control the sound bar using the TV remote control. ☒
- 14 — Initialize
- 15 — System version
- 16 — Share usage data
Send Google Cast usage data and crash reports to Google. ☒
- 17 — Learn about Google Cast privacy


- 1 Rename** – Renames the speaker.
- 2 Speaker LED** – Turns on or off speaker's LED indicator.
- 3 IP Info.** - Shows the IP address of the speaker.
- 4 Compressed sound transmission** – Adjusts the compression of audio source according to network status.
- 5 DRC** – Turns on or off DRC function. (Page 60)
- 6 Night** – Turns on or off Night Mode function. (Page 62)
- 7 Auto Volume On/Off** – Turns on or off Auto Volume function. (Page 62)
- 8 AV Sync** – Adjust the audio and video Synchronization. (Page 60)
- 9 Auto Display On/Off** – Turns on or off Auto Display function.
- 10 Auto Power On/Off** – Turns on or off Auto Power function. (Page 61)
- 11 Bluetooth standby mode** – Turns on or off Bluetooth standby mode.
- 12 Connect SoundBar and TV** – Guide you to connect to your TV. (through Optical (Page 13) or HDMI (Page 15))
- 13 Using the TV remote control** - Adjusts some functions of this unit with your TV remote control. (Page 60)
- 14 Initialize** – Resets the speaker.
- 15 System version** – Displays the current system version.
- 16 Share usage data** - Select whether to send Google cast usage data and crash reports to Google.
- 17 Learn about Google Cast privacy** - Shows Privacy policy of Google cast.

[Alarms/Sleep Timer] Menu

Turns on and off the speaker at a designated time.

Alarms

Speaker will let you know when it is time.

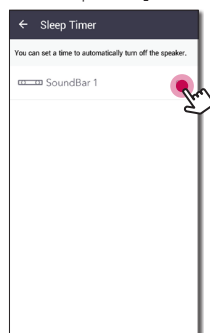
 Deletes selected alarm.

 Adds new alarm.

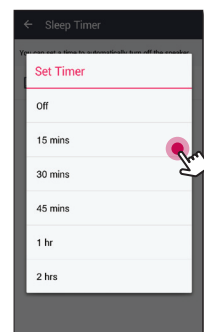
Sleep Timer

Sets a time to automatically turn off the speaker.

1. Select the speaker to set timer on [Sleep Timer] in the [Alarms/Sleep Timer] menu.



2. Set the desired timer on selected speaker.



[Music Library] Menu

Manages the music library index.

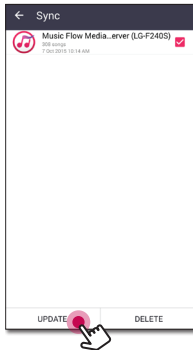
Sync Schedule

You can set the time to update the Music index automatically. Select the days and time to perform the update. (Sync Schedule is [OFF] by default.)

Sync

Manages the music library index.

1. Select the desired server and click the checkbox.



2. Tap the [Update] to update the desired server.

[Account management] Menu

Manages various social networking service and online streaming service.

[Time Zone] Menu

Automatic Time zone

It offers to use network provided time.

Set Time Zone

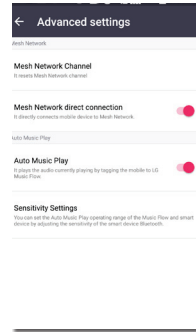
If you deselect [Automatic Time zone], you can select your time zone yourself.

[Advanced Settings] Menu

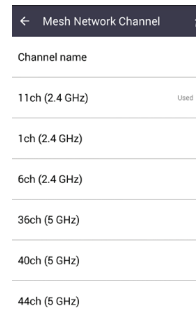
Mesh Network Channel

If normal playback or group playback is not smooth using multiple speakers including wireless speaker connection, changed the mesh network channel to improve network speed.

1. Select the [Settings] -> [Advanced Settings] option.



2. Select the [Mesh Network Channel] option. The channel information now being used is displayed.



3. Select the channel to change.
4. The channel information is updated to the selected channel.

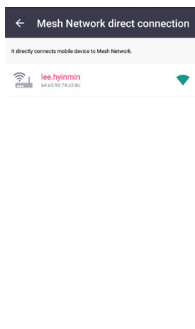
! Note

- The speaker is disconnected temporarily during the channel changing.
- If you changed the channel when the speaker turned off, turn on and add it again.
- If the speaker is not connected to network after changing the channel, add the speaker again.

Mesh Network direct connection (Android only)

You can directly connect the smart device to speaker connected your home network.

When your smart device is placed in a position where it cannot connect to the home network, select a nearby speaker in the [Mesh Network direct connection] list and then connect the smart device to the speaker.

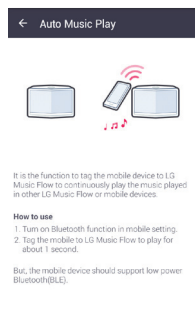


Auto Music Play

You can easily change the rendering device from your smart device or a speaker to another speaker by approaching your smart device to the desired speaker.

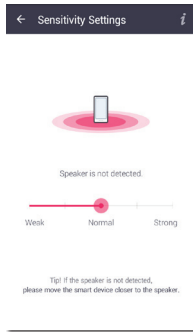
- Your smart device should support bluetooth (BLE).
- This function is subject to the smart device capability and the Wi-Fi network status.
- Auto music play option in the music flow app should be turned on.
- This function may cause more battery consumption.

1. Turn on the [Auto Music Play] option in the Advanced settings menu on the music flow app.
2. Tag the smart device to LG Music Flow to play for about 1 second.



Sensitivity Settings

Sets the operating distance of Auto Music Play between the speaker and your smart device to adjust sensitivity of Bluetooth(BLE).



- Place your smart device close enough to the tag on the speaker. It is recommend to be within about 5 cm (2 inches).
- Set the slide bar at [Close], the leftmost position.
- Move the slide to the right slowly until the notification appears.

! Note

- The smart device should support low power Bluetooth (BLE).
- BLE support specifications in case of android can vary depending on the manufacturer.

Device	O/S
Android	Android 4.3 (or later)
Apple	iOS 7.1.2 (or later)

[Google Cast] Menu

Learn how to cast

Shows to use Google Cast.

Google Cast-enabled apps

Shows available apps on Google Cast.

Legal information

Select [Google Terms of Service], [Google Privacy Policy] or [Open source license] to show the selected information.

[Version Info.] Menu

Updates the speaker to the latest version.

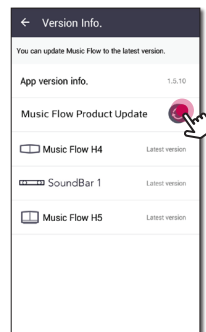
App version info.

Displays the current application's version.

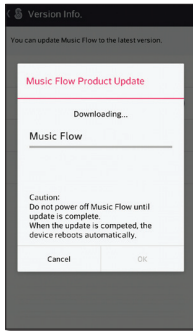
Device version info.

Updates the latest speaker's firmware version.

1. Find the speakers need to update and tap the [🔄].

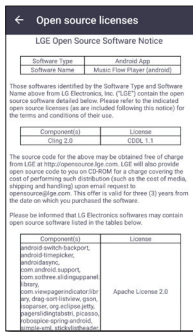


2. Starts the software update.



[Open source licenses] Menu

Shows LGE Open Source Software Notice.



Using a Bluetooth Wireless Technology

About Bluetooth

Bluetooth is wireless communication technology for short range connection.

The sound may be interrupted when the connection interfered by the other electronic wave or you connect the bluetooth in the other rooms.

Connecting individual devices under **Bluetooth** wireless technology does not incur any charges. A mobile phone with **Bluetooth** wireless technology can be operated via the Cascade if the connection was made via **Bluetooth** wireless technology.

- Available Devices : Android device, iOS device
- Version: 4.0
- Codec: SBC


Bluetooth profiles

In order to use Bluetooth wireless technology, devices must be able to interpret certain profiles. This speaker is compatible with following profile.

A2DP (Advanced Audio Distribution Profile)

Listening to Music of a Bluetooth Device

Before you start the pairing procedure, make sure that the Bluetooth feature on your smart device is turned on. Refer to your Bluetooth device's user guide. Once a pairing operation is performed, it does not need to be performed again.

1. Select the Bluetooth function by using  on the remote control or **F** on the unit until the function is selected.
Appears "BT" and then "BT READY" in display window.
2. Operate the Bluetooth device and perform the pairing operation. When searching for this speaker on your Bluetooth device, a list of the devices found may appear in the Bluetooth device display depending on the type of Bluetooth device. Your speaker appears as "LG SH6(XX:XX)".
3. Select the "LG SH6(XX:XX)".

! Note

- XX:XX means the last four digits of address. For example, if your unit has a MAC address such as 20:C3:8F:C9:**31:55**, you will see "LG SH6(31:55)" on your Bluetooth device.
- Depending on the Bluetooth device type, some device have a different pairing way. Enter the PIN code (0000) as needed.

4. When this unit is successfully connected with your Bluetooth device, "PAIRED" will appear on the display window.
5. Listen to music.
To play music in your Bluetooth device, refer to your Bluetooth device's user guide.
According to your Bluetooth device's volume level, the volume level of Bluetooth will be adjusted.

! Note

- When using **Bluetooth** technology, you have to make a connection between the unit and the bluetooth device as close as possible and keep the distance.
However it may not work well in the case below :
 - There is a obstacle between the unit and the bluetooth device.
 - There is a device using same frequency with **Bluetooth** technology such as a medical equipment, a microwave or a wireless LAN device.

! Note

- This unit supports Bluetooth auto pairing. However it does not operate in the case below:
 - When you restart this unit.
 - When you disconnect this unit by yourself.
 - When you disconnect this unit on the connected Bluetooth device.
- The sound may be interrupted when the connection is interfered with by the some other electronic wave.
- You cannot control the **Bluetooth** device with this unit.
- Pairing is limited to "One" **Bluetooth** device. Multi-Pairing is not supported.
- Depending on the type of the device, you may not be able to use the Bluetooth function.
- You can enjoy using **Bluetooth** when using Phone, MP3, Notebook, etc..
- The more distance between the unit and the bluetooth device, the lower the sound quality becomes.
- The **Bluetooth** connection will be disconnected when the unit is turned off or the **Bluetooth** device gets too far from the unit.
- If the **Bluetooth** connection is disconnected, connect the **Bluetooth** device again.
- When a **Bluetooth** device is not connected, "BT READY" appears on the display window.
- If you set the Wi-Fi function in the state of unconnected network, **Bluetooth** and Wireless TV Sound Sync may not be connected.

Other operations

DRC, Night, Auto volume, AV Sync setting can be configured only on App or PC software.

DRC (Dynamic Range Control)

Make the sound clear when the volume is turned down (Dolby Digital only). Set to “On” in DRC menu.

AV Sync

When receiving audio signals from TV, sound and images may not be matched. In the case, this function can adjust the delay time.

You can set the time between 0 and 300 ms on AV Sync menu.

Using your TV remote control

You can control some functions of this unit by your TV remote control even by other company's product. Controllable functions are volume up/down and mute.

Press and hold **OPTICAL** on the remote control for about 3 seconds. “ON - TV REMOTE” appears and you can control this unit by your TV remote control.

To check the status of this function, press and hold **OPTICAL**.

To turn off this function, press and hold **HDMI** on the remote control for about 3 seconds. “OFF - TV REMOTE” is scrolled.


Note

- Supported TV brands


LG	Panasonic	Philips	Samsung
Sharp	Sony	Toshiba	Vizio

- Make sure that the sound output of your TV is set to [External speaker].
- Depending on the remote control, this function may not work well.
- This function does not operate on LG TV's magic remote control.
- This function may not work well when some TV control functions such as HDMI CEC, SIMPLINK and LG Sound Sync set to ON.
- Some remote control may not be supported.
- Some remote control may not operate if you press repeatedly the volume button.

Turn off the sound temporarily

Press  (Mute) to mute your unit.

You can mute your unit, for example, to answer the telephone, “MUTE” is displayed in the display window.

To cancel it, press  (Mute) again on the remote control or change the volume level.

Sleep timer setting

This unit will turn off by itself after the time set.

You can set Sleep timer between 15 minutes and 2 hour on Sleep timer menu. To cancel the Sleep timer you set, select Off.

Auto power down

This unit will turn itself off to save electric consumption when the main unit is not connected to an external device and is not used for 20 minutes.

It will also turn off after six hours if the Main unit is connected to a device using portable input.

When network is connected, the speaker switches to the network standby mode. Then the LED indicator on the unit becomes dimmed in white.

If network is disconnected, the speaker switches to the standby mode. Then the LED indicator on the unit turns red.

AUTO POWER On/Off

This unit automatically turns on and off by an input source : Optical.

When you turn on your TV or an external device connected to this unit, this unit recognizes the input signal and selects the optical function. You can hear the sound from your device.


Press and hold **WI-FI** on the remote control for about 3 seconds, "ON - AUTO POWER" appears and AUTO POWER on function is turned on.

Press and hold **LG TV** on the remote control for about 3 seconds, "OFF - AUTO POWER" is displayed.

! Note

- After the unit is turned on by AUTO POWER function, it will be automatically turned off if there is no signal for a certain period of time from the TV connected by LG Sound Sync (Optical).
- After the unit is turned on by AUTO POWER function, it will be automatically turned off if there is no signal for a certain period of time from the external device.
- If you turned off the unit directly, it cannot be turned on automatically by AUTO POWER function. However the unit can be turned on by AUTO POWER function when optical signal comes in after 5 seconds of no signal.
- Depending on the connected device, this function may not operate.
- If you want to use AUTO POWER, SIMPLINK must be turned off. It takes for about 30 seconds to switch on or off SIMPLINK.
- You can set the AUTO POWER function only when this unit is turned on.
- If you turn off (Red LED) this unit in the network disconnected status, you cannot AUTO POWER On by LG Sound Sync (Wireless).

Auto Display Off / Dimmer

Press and hold  on the remote control for about 3 seconds, "ON - AUTO DISPLAY" appears and Auto Display off function is turned on. (Default: ON)

OPT, HDMI, LG TV, ARC: If there is no key input for about 15 seconds, display will be darkened and after about 5 seconds, display will be turned off.

Wi-Fi, PORTABLE, BT: If there is no key input for about 15 seconds, display will be darkened.

To turn off this function, press and hold PORTABLE for about 3 seconds. "OFF - AUTO DISPLAY" is scrolled. Display window will be darkened if there is no key input for about 15 seconds in all functions.

Sound adjustment

Adjust volume level automatically

This unit supports Auto volume function that automatically adjusts the volume level.

You can set Auto Volume to On or Off on Auto Volume menu.

Adjust the Bass

You can adjust the sound level of Bass.

BASS : -5 dB to 5 dB

You can adjust the sound level of Bass using BASS LEVEL +/- on the remote control.

Night mode

Set Night mode to On to reduce the sound intensity and improve fineness and softness.

You can set Night mode to On or Off on Night mode menu.

Standby mode




The speaker switches to the standby mode if there is no music playback or no button operation.

Standby mode

Option 1.

If network is disconnected and there is no music playback and no button operation for 20 minutes, the speaker switches to the standby mode. Then "GOOD-BYE" appears on the display window and the LED indicator on the unit turns red.

Option 2.




If you press and hold  /  on the unit or  on the remote control for about 3 seconds, the speaker switches to the standby mode. Then "GOOD-BYE" appears on the display window and the LED indicator on the unit turns red.

Network standby mode

Option 1.

When network is connected but music is not played and buttons are not pressed for 20 minutes, the speaker switches to the network standby mode. Then the LED indicator on the unit becomes dimmed in white.

Option 2.

If you press  /  on the unit or  on the remote control, the speaker switches to the network standby mode. Then the LED indicator on the unit becomes dimmed in white.

Bluetooth standby mode

If the Bluetooth standby mode is set to ON, the speaker switches Bluetooth standby mode when is turned off.

In Bluetooth standby mode, Bluetooth and LG TV can be connected without Network connection. Bluetooth and LG TV are able to connect even if network is not connected.



Note

- Adjust volume level of the main unit to minimum. And then, press and hold VOL - and LG TV on the remote control for about 3 seconds. Shows current setting status of Bluetooth standby mode. You can change the mode during scroll by pressing LG TV button.
- If you turn off the unit in the Wi-Fi function, Bluetooth standby mode does not operate.
- To use this function, you should turn on the AUTO POWER function.

Reset the Speaker


If the speaker is not turned on or doesn't respond, reset the speaker.

Resetting the speaker

- Press and hold the  button until you hear the beep sound once. You can see "DISABLED" on the display window. Then all wireless network ports are deactivated and the stored wireless network information is deleted.
- Press and hold the  button until you hear the beep sound twice. You can see "RESET" on the display window. You can reset the speaker to its original factory settings.

Troubleshooting

General

Symptoms	Cause & Solution
The unit does not work properly.	<ul style="list-style-type: none">• Turn off the power of this unit and the connected external device (TV, DVD-player, Amplifier, etc.) and turn it on again.• Disconnect the power cord of this unit and the connected external device (TV, DVD-player, Amplifier, etc.) and then try connecting again.• Previous setting may not be saved when device power is shut off.
The power does not turn on.	<p>Is the power cord plugged into the outlet?</p> <ul style="list-style-type: none">• Connect the power plug to the outlet.
A function does not work when the button is pressed.	<p>Is there static electricity in the air?</p> <ul style="list-style-type: none">• Disconnect the power plug and connect it again.
Sound is not produced.	<p>Is the volume set to minimum?</p> <ul style="list-style-type: none">• Adjust the volume.• When you are using connection with a external device (set top box, Bluetooth device etc.), adjust volume level of the device. <p>Is the mute function activated?</p> <ul style="list-style-type: none">• Press  or adjust the volume level to cancel the mute function. <p>Is the function selected properly?</p> <ul style="list-style-type: none">• Check the input source and select the correct input source.
The remote control does not work properly.	<p>Is the remote control too far from the unit?</p> <ul style="list-style-type: none">• Operate the remote control within about 7 m (22.97 feet). <p>Is there an obstacle in the path of the remote control and the unit?</p> <ul style="list-style-type: none">• Remove the obstacle. <p>Are the batteries in the remote control exhausted?</p> <ul style="list-style-type: none">• Replace the batteries with new one.
The AUTO POWER function does not work.	<ul style="list-style-type: none">• Check connection of the external device such as TV, DVD/Blu-Ray player or Bluetooth device.• Check the state of SIMPLINK and turn off SIMPLINK.• Depending on the connected device, this function may not operate.
LG Sound Sync does not work.	<ul style="list-style-type: none">• Check whether your LG TV supports LG Sound Sync.• Check connection of LG Sound Sync.• Check sound setting of your TV and this unit.

Symptoms	Cause & Solution
When you feel the output sound of the unit is low.	<p>Check the details below and adjust the unit according to them.</p> <ul style="list-style-type: none"> • Switch [ON] state of DRC function to [OFF] on DRC menu. • With the sound bar connected with TV, change the AUDIO DIGITAL OUT setting on TV Setup Menu from [PCM] to [AUTO] or [BITSTREAM]. • With the sound bar connected with Player, change the AUDIO DIGITAL OUT setting on Player Setup Menu from [PCM] to [PRIMARY PASS-THROUGH] or [BITSTREAM]. • Change Audio DRC setting on Player setup menu to [OFF] state.

Network

Symptoms	Cause & Solution
Cannot connect the speaker to your home network.	The wireless communication may be interrupted from household devices that are using radio frequencies. Move the speaker away from them.
Media servers are not displayed on the device list.	<ul style="list-style-type: none"> • The firewall or anti-virus software on your media server is running. Turn off the firewall or anti-virus software running on your media server. • Make sure that the speaker is connected to the same network that your media server is connected.
Music Flow Player doesn't work properly.	<p>Is the Music Flow Player plugged in?</p> <ul style="list-style-type: none"> • Plug in the Music Flow Player. <p>Is the LAN cable connected to the wireless router and the Music Flow Player properly?</p> <ul style="list-style-type: none"> • Connect the LAN cable to the LAN port on the back of the Music FlowPlayer and to your wireless router. <p>When the Music Flow Player is plugged in, does the Music Flow Player's LED show it's operating properly?</p> <ul style="list-style-type: none"> • If you experience troubles with connecting the Music Flow Player, try relocating the speaker closer to the wireless router or the Music Flow Player. <p>If you restart the router?</p> <ul style="list-style-type: none"> • You need to turn the speaker's power off and on again. <p>If you install new router.</p> <ul style="list-style-type: none"> • You need to perform a factory set and setup the network connection for speaker.

Application and PC Software

Symptoms	Cause & Solution
Music Flow Player app doesn't work properly.	<p>Does an error occur when accessing the app?</p> <ul style="list-style-type: none">• Make sure that your smart device is compatible with the app.• Make sure that the Music Flow Player app is the latest version.• Make sure that the speaker's front LED turns from red to white.
Music Flow PC Software doesn't work properly.	<p>Does the firewall on your PC or Mac set to enable?</p> <ul style="list-style-type: none">• Disable all your firewalls and try to connect again. Refer to your firewall's instruction or website. <p>Is the LAN cable connected to the wireless router and your PC or Mac properly?</p> <ul style="list-style-type: none">• Ensure that the speaker and your PC or Mac are correctly connected to the local area network and can access the internet.• The wireless communication may be interrupted from household devices that are using radio frequencies. Move the speaker and your PC or Mac away from them.

NOTES to use wireless

Symptoms	Cause & Solution
This device may have wireless interference.	<ul style="list-style-type: none">• Wireless may not operate normally in weak signal area.• Do not install the device on metal furniture for optimum performance.
Bluetooth device may malfunction or make noise in the following cases.	<ul style="list-style-type: none">• When any part of your body contact the transceiver of the Bluetooth device or sound bar.• When there is an obstacle or wall or the device is installed in a secluded spot.• When there is a device(a wireless LAN, a medical equipment or a microwave) using same frequency, make the distance between the products as far away as possible each other.• When connecting the device to the Bluetooth device, make the distance between the products as close as possible each other.• When the device gets too far from the Bluetooth device, the connection is disconnected and also malfunction may occur.

File requirement

Available File extensions : ".mp3", ".wma", ".flac", ".m4a", ".aac", ".ogg", ".wav"

Sampling frequency: within 32 to 48 kHz (mp3, wma), up to 192 kHz/24 bit (flac)

Bit rate: up to 320 kbps (mp3, wma)

- The file requirements are not always compatible. There may have some restrictions by file features and media server's ability.
- Some wav files are not supported on this speaker.
- Depending on the types of file or ways of recording, it may not play back.
- Some DRM-loaded files are not supported on this speaker.

Trademarks and licenses

All other trademarks are trademarks of their respective owners.



Manufactured under license from Dolby Laboratories. Dolby and the double-D symbol are trademarks of Dolby Laboratories.



For DTS patents, see <http://patents.dts.com>.
Manufactured under license from DTS Licensing Limited. DTS, the Symbol, & DTS and the Symbol together are registered trademarks, and DTS Digital Surround is a trademark of DTS, Inc. © DTS, Inc. All Rights Reserved.



Bluetooth wireless technology is a system which allows radio contact between electronic.

Connecting individual devices under **Bluetooth** wireless technology does not incur any charges. A mobile phone with **Bluetooth** wireless technology can be operated via the Cascade if the connection was made via **Bluetooth** wireless technology.




The **Bluetooth** word mark and logos are owned by the Bluetooth SIG, Inc. and any use of such marks by LG Electronics is under license.

Other trademarks and trade names are those of their respective owners.



The terms HDMI and HDMI High-Definition Multimedia Interface, and the HDMI logo are trademarks or registered trademarks of HDMI Licensing LLC in the United States and other countries.

Specifications

General	
Power requirements	25 V  2 A (AC adapter)
Power consumption	25 W
	Networked standby : 5.5 W (If all network ports are activated.) How to disconnect the wireless network connection or the wireless device Press and hold the  button until you hear the beep sound twice.
AC adapter	Model : DA-50F25 Manufacturer: Asian Power Devices Inc. Input: 100 - 240 V ~ 50 - 60 Hz Output: 25 V  2 A
Dimensions (W x H x D)	Approx. 1060 mm x 76 mm x 145 mm (41.7 inch x 2.9 inch x 5.7 inch)
Net Weight	Approx. 5.3 kg (11.8 lb)
Operating temperature	5 °C to 35 °C
Operating humidity	5 % to 90 %
Available Digital Input Audio Sampling Frequency	32 kHz, 44.1 kHz, 48 kHz, 96 kHz












Input/Output	
OPTICAL IN	3 V (p-p), Optical jack x 1
PORTABLE IN	0.5 Vrms (3.5 mm stereo jack) x 1
HDMI IN	19 Pin (Type A, HDMI™ connector) x 1
HDMI OUT	19 Pin (Type A, HDMI™ connector) x 1

Amplifier (RMS Output)	
Total	150 W
Front	(15W x 3) x 2 (4Ω at 1kHz, THD 1%) 30W x 2 (8Ω at 12kHz, THD 1%)





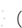
System	
LAN port	Ethernet jack x 1, 10 BASE-T/100 BASE-TX
Wireless LAN (Internal antenna)	Integrated IEEE 802.11n (Draft 2.0) wireless networking access, compatible with 802.11a/b/g/n Wi-Fi networks.

- Designs and specifications are subject to change without prior notice.

About Status LED's Condition

Color	Status	
 ↔  (Off) (White)	The unit is waiting for network connection	Network Status
 ↔  (White) (Red)	The initial unit is being connected to the network ( button is pressed)	
 (White)	The unit is connected to the network	
 ↔  (Off) (Red)	The additional unit is being connected to the network ( button is pressed)	
 (Dimmed White)	Network standby mode	Standby Mode Status
 (Red)	Standby mode	

! Note for Status LED's Condition

- When you set the group at first, Network status LED turns green.
- The additional groups are set, the Network status LED color is changed in group order.
( (Green) >  (Magenta) >  (Cyan) >  (Blue) >  (Yellow))
- If the grouped speakers switch to the network standby mode, the brightness of Network status LED gets dark.

Handling the Speaker

When shipping the speaker

Please save the original shipping carton and packing materials. If you need to ship the speaker, for maximum protection, re-pack the speaker as it was originally packed at the factory.

Keeping the exterior surfaces clean

- Do not use volatile liquids such as insecticide spray near the speaker.
- Wiping with strong pressure may damage the surface.
- Do not leave rubber or plastic products in contact with the speaker for a long period of time.

Cleaning the speaker

To clean the player, use a soft, dry cloth. If the surfaces are extremely dirty, use a soft cloth lightly moistened with a mild detergent solution. Do not use strong solvents such as alcohol, benzene, or thinner, as these might damage the surface of the speaker.

Important Information Relating to Network Services

All information, data, documents, communications, downloads, files, text, images, photographs, graphics, videos, webcasts, publications, tools, resources, software, code, programs, applets, widgets, applications, products and other content ("Content") and all services and offerings ("Services") provided or made available by or through any third party (each a "Service Provider") is the sole responsibility of the Service Provider from whom it originated.

The availability of and access to Content and Services furnished by the Service Provider through the LGE Device are subject to change at any time, without prior notice, including, but not limited to the suspension, removal or cessation of all or any part of the Content or Services.

Should you have any inquiry or problem related to the Content or Services, you may refer to the Service Provider's website for the most up-to-date information. LGE is neither responsible nor liable for customer service related to the Content and Services. Any question or request for service relating to the Content or Services should be made directly to the respective Content and Service Providers.

Please note that LGE is not responsible for any Content or Services provided by the Service Provider or any changes to, removal of, or cessation of such Content or Services and does not warrant or guaranty the availability of or access to such Content or Services.

TERMS OF USE

These Terms of Use apply to those individuals and groups who use LG's Multiroom Speaker (LG Multiroom Speaker), any software(s) associated with LG Multiroom Speaker, this application and any services associated with this application (collectively "LG Software"). They set out LGE's responsibilities to you as well as identifying the "dos" and "don'ts" that you should be aware of when you use the LG Software. LG Software is proprietary software owned by LG Electronics Inc., a corporation registered in Korea with its registered office at Yeouido-dong 20, Yeongdeungpo-gu, Seoul, Korea. LGE, and its licensors ("LGE", "us" or "we").

By accessing or using LG Software, you confirm that you accept these Terms of Use and that you agree to comply with them. If you do not agree to these Terms of Use, you may not access or use the LG Software. To the extent that any conflict arises between these Terms of Use and any other document referred to in these Terms of Use, these Terms of Use will take precedence, unless clearly stated otherwise in the relevant document.

We grant you a non-exclusive license to use the pre-installed copy of LG Software solely to the extent necessary for you to use your LG Multiroom Speaker personally and for no other purpose.

You acknowledge that all ownership rights in LG Software anywhere in the world belong exclusively to us and that no ownership rights in LG Software are transferred to you. You are only entitled to the limited use of LG Software as is granted in these license terms.

You may not copy, modify, decompile or reverse engineer our software in any way unless you are allowed to do so by law. We reserve the right to suspend, withdraw or discontinue all or part of the Services without notice if we consider that you are in breach of these Terms of Use.

You acknowledge that LG Software has not been developed to meet your individual requirements. We make no promises or guarantees that LG Software is free from bugs or errors or that it will always be available. We use commercially reasonable efforts to provide LG Software on a continuous, high quality basis but cannot guarantee that they will always be available, uninterrupted or error free. It is possible that we may have to interrupt or discontinue the LG Software or suspend or restrict your use of all or any part of the Services where we consider it reasonably necessary for technical, operational, security, legal or

regulatory reasons.

We do not accept any responsibility if for any reason the Services or any part of them are unavailable at any time or for any period.

Although you may use LG Software to download and access content or applications made available by third parties on your LG Software, we make no promises or guarantees that you will always be able to access such content or applications. So far as we are legally able to do so, we exclude any warranties, conditions or other terms which may be implied into these license terms by law.

So far as we are legally able to do so, we exclude any liability for any loss or damage incurred by you or any other person in connection with your use of LG Software. We are only responsible for loss or damage suffered that is a foreseeable result of our breach of these license terms or our negligence up to the amount specified below, but we are not responsible for any loss or damage that is not foreseeable. Loss or damage is foreseeable if it is an obvious consequence of our breach or if it was contemplated by you and us when you starting using LG Software.

For any loss or damage that is not excluded under these license terms, whether in contract, tort (including negligence) or otherwise, the total liability of us and our group of companies to you is limited to the amount that you paid for your LG Software service. To the extent permissible under the applicable laws, some jurisdictions do not allow the limitation or exclusion of liability for incidental or consequential damages, or have legislation that restricts the limitation or exclusion of liability, so the above limitation may not apply to you.

Nothing in these license terms shall limit or exclude our liability for death or personal injury relating from our negligence, fraud or fraudulent misrepresentation or any other liability that cannot be excluded or limited by law.

LG Software provides access to "apps" and link to other services owned and operated by third parties, such as content providers. Any third party apps, services and content that you access via the Services are made available to you by these third party providers and are outside the scope of these Terms of Use.

Your dealings with any third party providers are solely between you and the relevant provider and may be subject to the provider's own terms and conditions and privacy policy. We encourage you to read these documents, although we are not responsible for their content. We do not accept any responsibility for apps,

services or content provided by third party providers. We may impose limits on the use of or access to certain third party content, application or services, in any case without notice or liability. We expressly disclaims any responsibility or liability for any change, interruption, disabling, removal of or suspension of any content, application or service made available through this LG Software. We are neither responsible nor liable for customer service related to the content, application and services. Any question or request for service relating to third party's content, application or services should be made directly to the respective content and service providers or application developers, as appropriate.

These terms do not affect your statutory rights as a consumer.

Suitability of the Services for children and parental control tools

Modify this accordingly to suit if appropriate: The Services are not directed at children under the age of 13 and are not structured specifically to attract children under 13. Further, certain content that you may access through your use of the Services may contain material that you consider indecent, objectionable or which may not be suitable for children.

If you permit a child to use your LG Smart TV to access the Services, you are solely responsible for deciding whether or not the relevant Services are appropriate for access by that child.

[Your Smart TV offers a parental control tool (by way of a 4 digit PIN). If you have enabled the 4-digit PIN, your LG Smart TV will not be able to display restricted content unless you type in the PIN. You are responsible for setting up and maintaining the parental control tool and any other controls that are available, and we will not be responsible for any harm, loss or damage you suffer or any other user of your LG Smart TV suffers as a result of your failure to do so. Depending on the models of your LG Smart TV, these features may not be available.

Viruses and Security

Modify this accordingly to suit if appropriate: We use commercially reasonable efforts to ensure that the Services are secure and virus free, but those efforts cannot and do not guarantee that the Services will be free from bugs, viruses, or other vulnerabilities.

Further, we do not accept responsibility for any loss or damage caused by a virus, distributed denial-of-service attack, or other technologically harmful material that may infect your LG Smart TV, data or

other material belonging to you, during your use of the Services.

Modify as you think appropriate: Complaints

If you have any queries, concerns or complaints about the Services, please contact [include reference to non-personal LG email address].

Modify as you think appropriate: Miscellaneous

Unless expressly stated otherwise, these Terms of Use and the documents referred to in them contain the entire agreement between us and you relating to your use of the Services and supersede any previous agreements, arrangements, undertakings or proposals, written or oral, between us and you relating to your use of the Services.

We may assign, sub-contract or otherwise transfer any or all of our rights and obligations under these Terms of Use to any company, firm or person. We can only do this if it does not materially affect your rights under these Terms of Use. You may not assign, sub-contract or otherwise transfer your rights or obligations under these Terms to anyone else (except where you dispose of your LG Smart TV to a third party) unless you first agree this with us in writing.

If we decide not to exercise or enforce any right that we have against you at a particular time, then this does not prevent us from later deciding to exercise or enforce that right.

If any part of these Terms of Use is found to be illegal, invalid or otherwise unenforceable by a court or regulator, then, where required, that part shall be deleted and the remaining parts of the Terms of Use will continue to be enforceable.

These Terms of Use do not create or infer any rights that are enforceable by any person who is not party to them.

These Terms of Use are governed by the laws of the country where your LG Smart TV is sold and both you and LGE agree to submit to the exclusive jurisdiction of the courts of the country where your LG Smart TV is sold in connection with the same

This Agreement shall be governed by the laws of the Republic of Korea, excluding their conflicts of laws provisions.

If you have any questions or comments about these Terms of Use please contact www.lg.com.

These Terms of Use may be updated by LGE from time to time. If we make a material change to our Terms of Use, we will update you via your LG Software or other means.

OPEN SOURCE SOFTWARE NOTICE INFORMATION

To obtain the source code under GPL, LGPL, MPL, and other open source licenses, that is contained in this product, please visit <http://opensource.lge.com>.

In addition to the source code, all referred license terms, warranty disclaimers and copyright notices are available for download.

LG Electronics will also provide open source code to you on CD-ROM for a charge covering the cost of performing such distribution (such as the cost of media, shipping and handling) upon email request to opensource@lge.com. This offer is valid for three (3) years from the date on which you purchased the product.

Gracenote® End User License Agreement

This application or device contains software from Gracenote, Inc. of Emeryville, California ("Gracenote"). The software from Gracenote (the "Gracenote Software") enables this application to perform disc and/or file identification and obtain music-related information, including name, artist, track, and title information ("Gracenote Data") from online servers or embedded databases (collectively, "Gracenote Servers") and to perform other functions. You may use Gracenote Data only by means of the intended End-User functions of this application or device.

You agree that you will use Gracenote Data, the Gracenote Software, and Gracenote Servers for your own personal non-commercial use only. You agree not to assign, copy, transfer or transmit the Gracenote Software or any Gracenote Data to any third party. YOU AGREE NOT TO USE OR EXPLOIT GRACENOTE DATA, THE GRACENOTE SOFTWARE, OR GRACENOTE SERVERS, EXCEPT AS EXPRESSLY PERMITTED HEREIN.

You agree that your non-exclusive license to use the Gracenote Data, the Gracenote Software, and Gracenote Servers will terminate if you violate these restrictions. If your license terminates, you agree to cease any and all use of the Gracenote Data, the Gracenote Software, and Gracenote Servers. Gracenote reserves all rights in Gracenote Data, the Gracenote Software, and the Gracenote Servers, including all ownership rights. Under no circumstances will Gracenote become liable for any payment to you for any information that you provide. You agree that Gracenote, Inc. may enforce its rights under this Agreement against you directly in its own name.

The Gracenote service uses a unique identifier to track queries for statistical purposes. The purpose of a randomly assigned numeric identifier is to allow the Gracenote service to count queries without knowing anything about who you are. For more information, see the web page for the Gracenote Privacy Policy for the Gracenote service.

The Gracenote Software and each item of Gracenote Data are licensed to you "AS IS." Gracenote makes no representations or warranties, express or implied, regarding the accuracy of any Gracenote Data from in the Gracenote Servers. Gracenote reserves the right to delete data from the Gracenote Servers or to change data categories for any cause that Gracenote deems sufficient. No warranty is made that the Gracenote Software or Gracenote Servers are error-free or that functioning of Gracenote Software or

Gracernote Servers will be uninterrupted. Gracernote is not obligated to provide you with new enhanced or additional data types or categories that Gracernote may provide in the future and is free to discontinue its services at any time. GRACENOTE DISCLAIMS ALL WARRANTIES EXPRESS OR IMPLIED, INCLUDING, BUT NOT LIMITED TO, IMPLIED WARRANTIES OF MERCHANTABILITY, FITNESS FOR A PARTICULAR PURPOSE, TITLE, AND NON-INFRINGEMENT. GRACENOTE DOES NOT WARRANT THE RESULTS THAT WILL BE OBTAINED BY YOUR USE OF THE GRACENOTE SOFTWARE OR ANY GRACENOTE SERVER. IN NO CASE WILL GRACENOTE BE LIABLE FOR ANY CONSEQUENTIAL OR INCIDENTAL DAMAGES OR FOR ANY LOST PROFITS OR LOST REVENUES.

copyright © 2000 to present Gracernote

