



Register online and get  
a free **10 year** warranty

[www.sitecom.com/warranty](http://www.sitecom.com/warranty)

# Installation guide PC or Mac



RoHS

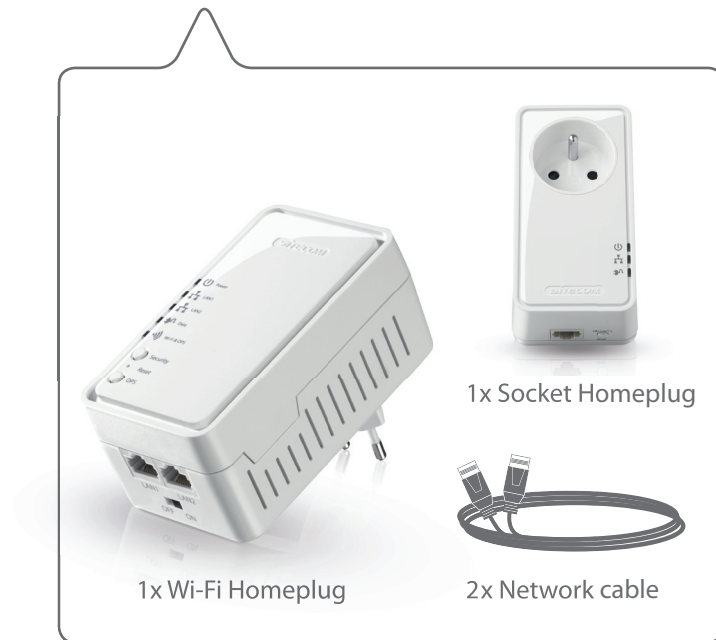


# Wi-Fi homeplug

- UK** Full manual available
- FR** Manuel complet est disponible
- DE** Ausführliche Anleitung erhältlich
- NL** Volledige handleiding beschikbaar
- IT** Manuale completo disponibile
- ES** Manual completo disponible
- PT** Manual completo disponível
- RU** Полное руководство доступно

[www.sitecom.com/helpdesk](http://www.sitecom.com/helpdesk)

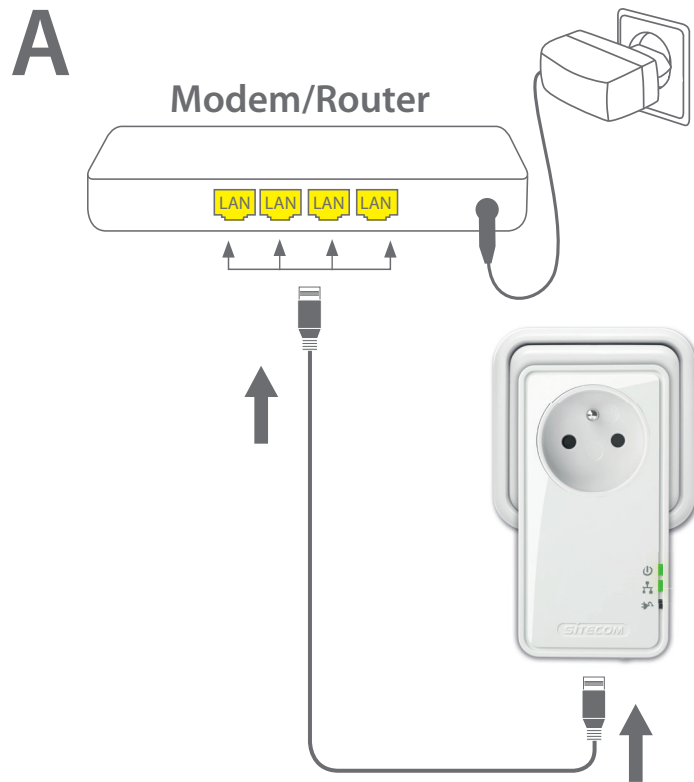
## Package content



1

## Setup the homeplugs

- FR Installation des fiches Homeplug
- DE Homeplugs anschließen
- NL Homeplugs aansluiten
- IT Configurare gli homeplug
- ES Colocar los homeplugs
- PT Configure os homeplugs
- RU Вставьте штекеры в разъемы



B

Wi-Fi Homeplug



C



wait 1 min.

go to step 2 →

# 2

## Connect and secure your homeplugs

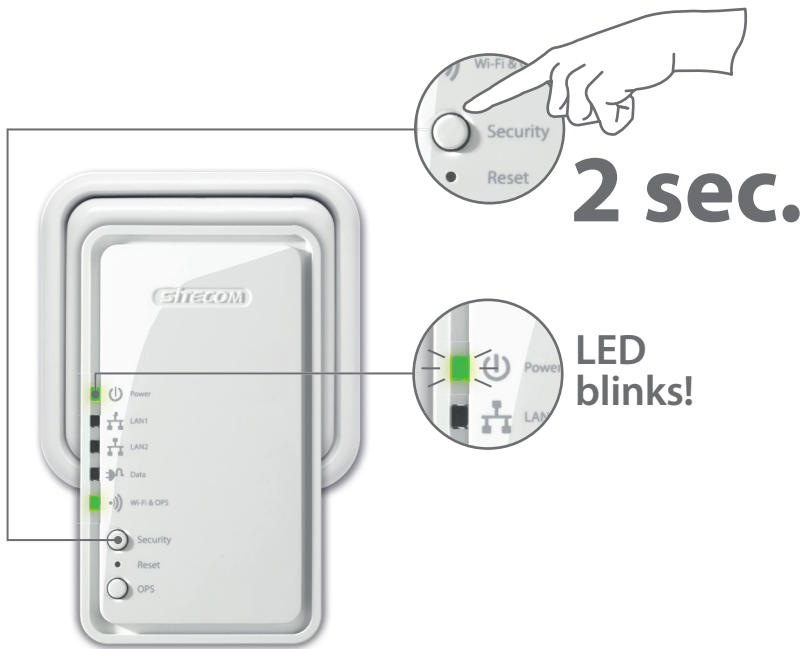
- FR Connexion et sécurisation de vos fiches Homeplug
- DE Homeplugs verbinden und sichern
- NL Verbind en beveilig je homeplugs
- IT Collega e rendi sicuri i tuoi Homeplug
- ES Conecte y fije bien sus homeplug
- PT Ligue e proteja os seus homeplugs
- RU Безопасность ваших домашних подключений

# A

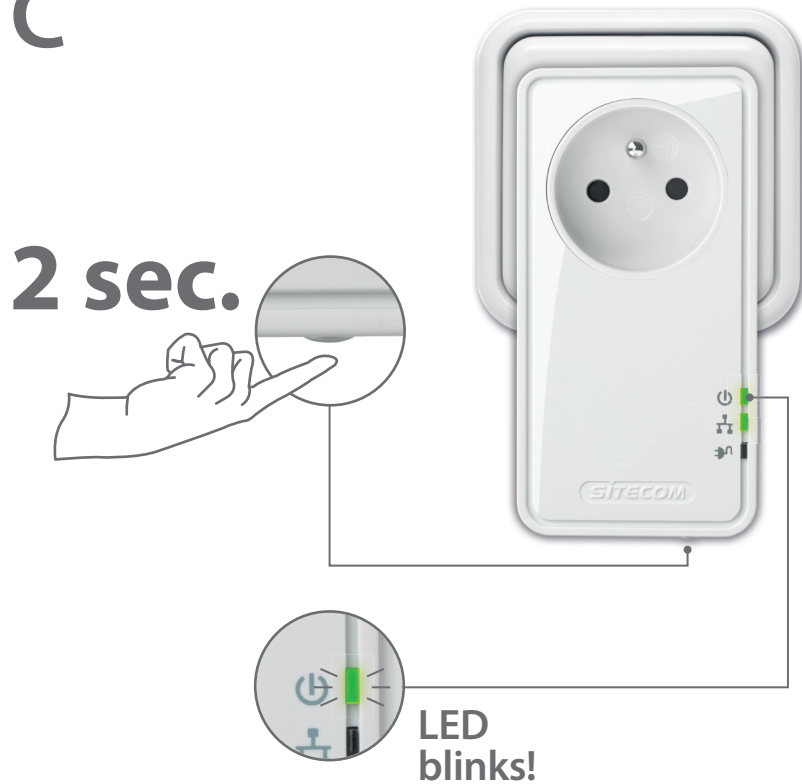
## 10 sec.



# B



# C



C



wait 2 min.



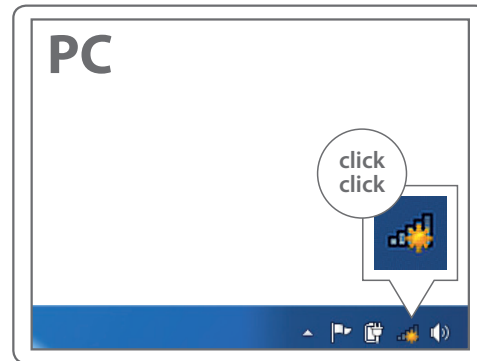
go to step 3 →

3

## Connect to your PC / Mac

- NL Verbind met je PC / Mac
- IT Connetti al PC / Mac
- DE Verbindung zum PC / Mac
- ES Conéctese a su PC / Mac
- PT Ligue ao seu PC / Mac
- FR Peut être connecté à votre ordinateur PC / Mac
- RU Подключитесь к PC / Mac

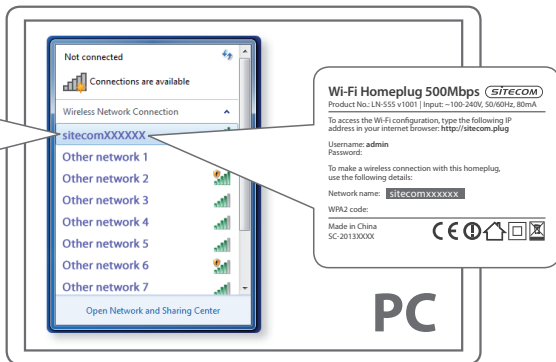
A





**B**

click



**Wi-Fi Homeplug 500Mbps** SITECOM  
Product No.: LN-555 v1001 | Input: ~100-240V, 50/60Hz, 80WmA

To access the Wi-Fi configuration, type the following IP address in your internet browser: <http://sitecom.plug>

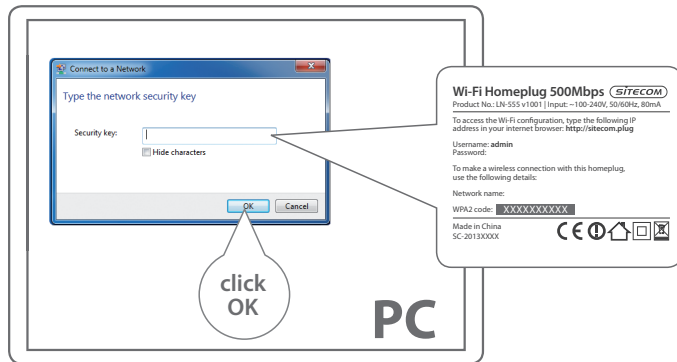
Username: admin  
Password:

To make a wireless connection with this homeplug, use the following details:

Network name: **sitecomXXXXXX**

WPA2 code:

Made in China  
SC-2013XXXX

**C**

**Wi-Fi Homeplug 500Mbps** SITECOM  
Product No.: LN-555 v1001 | Input: ~100-240V, 50/60Hz, 80WmA

To access the Wi-Fi configuration, type the following IP address in your internet browser: <http://sitecom.plug>

Username: admin  
Password:

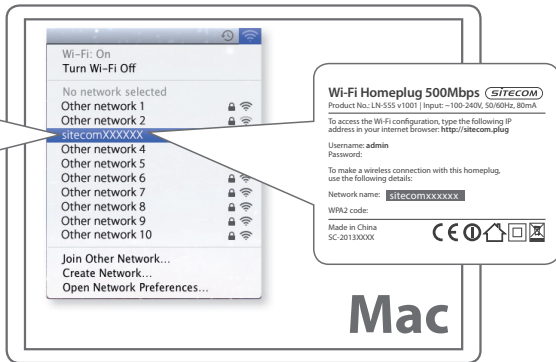
To make a wireless connection with this homeplug, use the following details:

Network name:

WPA2 code: **XXXXXXXXXX**

Made in China  
SC-2013XXXX

click



**Wi-Fi Homeplug 500Mbps** SITECOM  
Product No.: LN-555 v1001 | Input: ~100-240V, 50/60Hz, 80WmA

To access the Wi-Fi configuration, type the following IP address in your internet browser: <http://sitecom.plug>

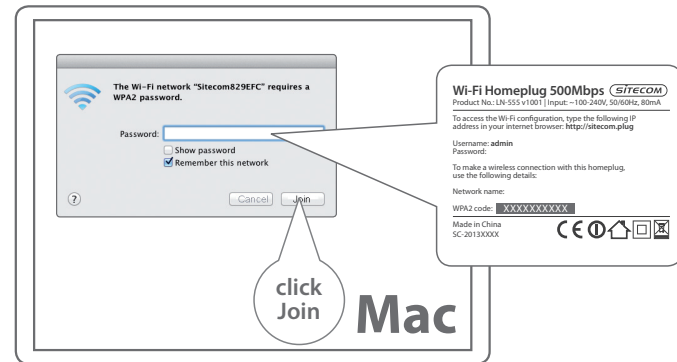
Username: admin  
Password:

To make a wireless connection with this homeplug, use the following details:

Network name: **sitecomXXXXXX**

WPA2 code:

Made in China  
SC-2013XXXX



**Wi-Fi Homeplug 500Mbps** SITECOM  
Product No.: LN-555 v1001 | Input: ~100-240V, 50/60Hz, 80WmA

To access the Wi-Fi configuration, type the following IP address in your internet browser: <http://sitecom.plug>

Username: admin  
Password:

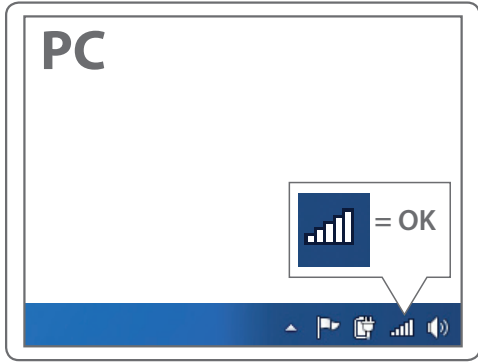
To make a wireless connection with this homeplug, use the following details:

Network name:

WPA2 code: **XXXXXXXXXX**

Made in China  
SC-2013XXXX

D



Done.  
Enjoy!

Trouble? [www.sitecom.com/helpdesk](http://www.sitecom.com/helpdesk)