



# Installation guide



# Wi-Fi USB adapter AC600

- UK** Full manual available in English
- NL** Volledige handleiding beschikbaar in het engels
- IT** Il manuale utente completo è disponibile in lingua inglese
- DE** Vollständiges Handbuch in englischer Sprache verfügbar
- ES** Manual completo disponible en inglés
- PT** Manual completo disponível em inglês
- FR** Manuel complet disponible en anglais
- RU** Подробное руководство доступно на английском языке



[www.sitecom.com/helpdesk](http://www.sitecom.com/helpdesk)

## Package content

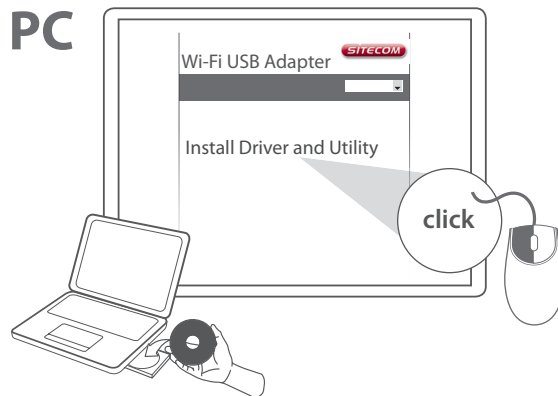


1

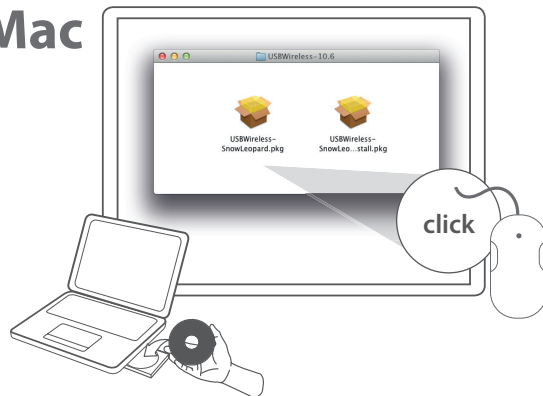
## Installation PC / Mac

- NL Installatie PC / Mac
- IT Installazione su PC / Mac
- DE Installation PC / Mac
- ES Instalación en PC / Mac
- PT Instalação PC / Mac
- FR Installation PC / Mac
- RU Установка на PC / Mac

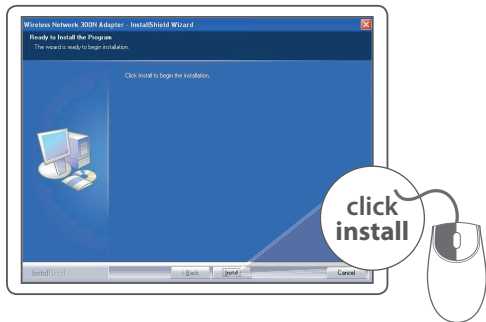
A PC



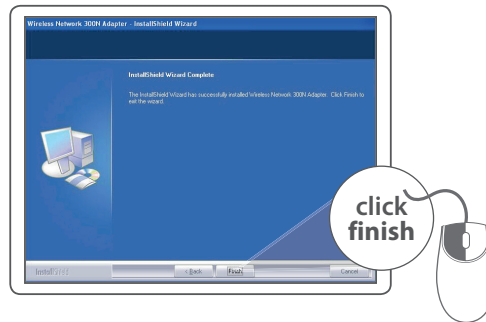
Mac



**B** PC



**C** PC



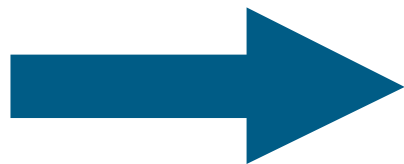
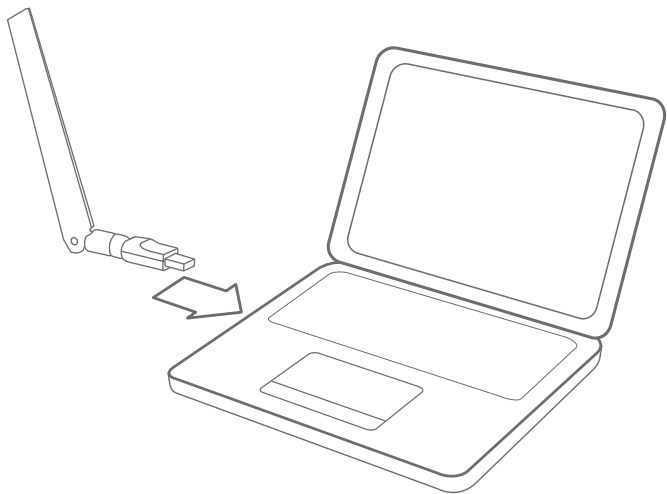
**Mac**



**Mac**



D

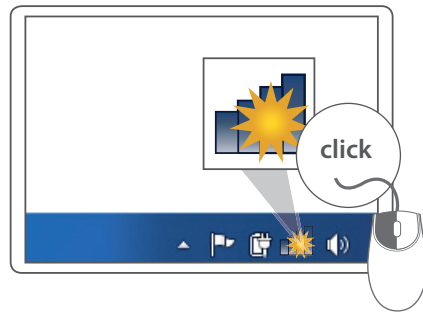


# 2

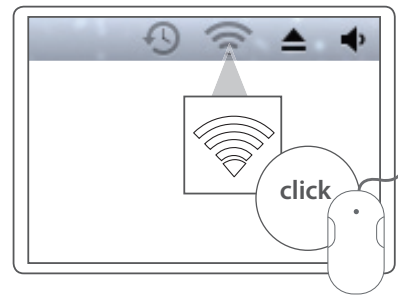
## Make a connection

- NL Maak verbinding
- IT Crea un collegamento
- DE Verbindung herstellen
- ES Realizar una conexión
- PT Fazer uma ligação
- FR Mise en place d'une connexion
- RU Создайте подключение

A PC

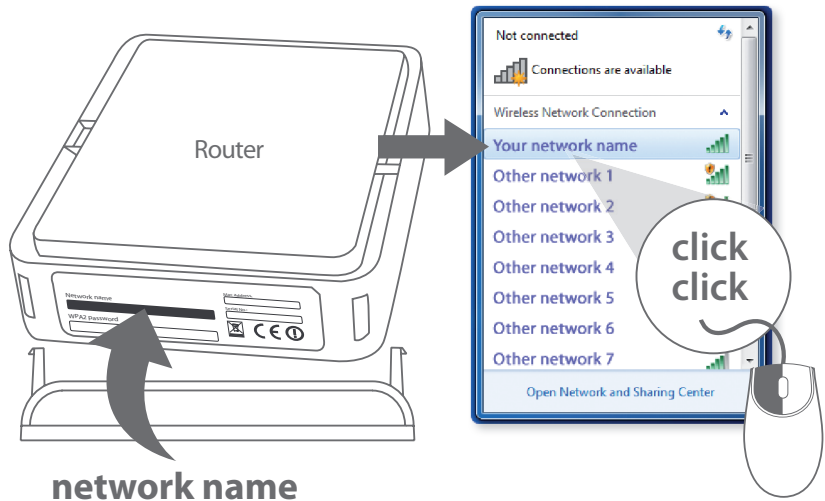


Mac

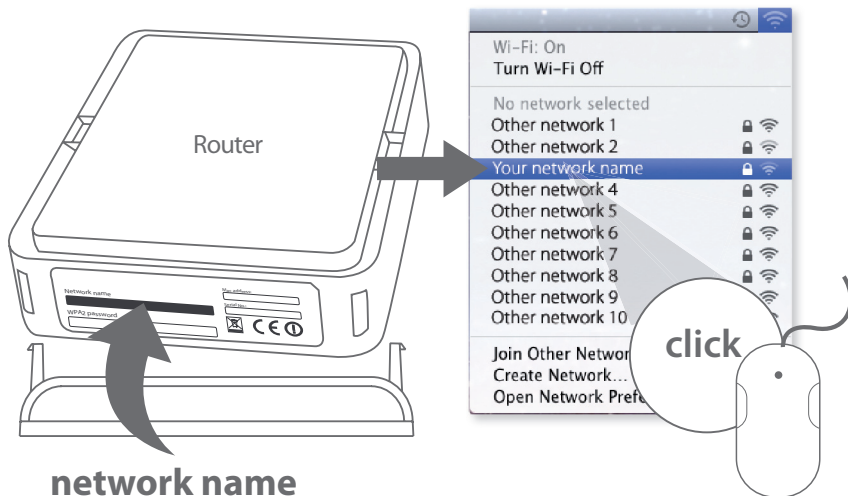


# B

# PC

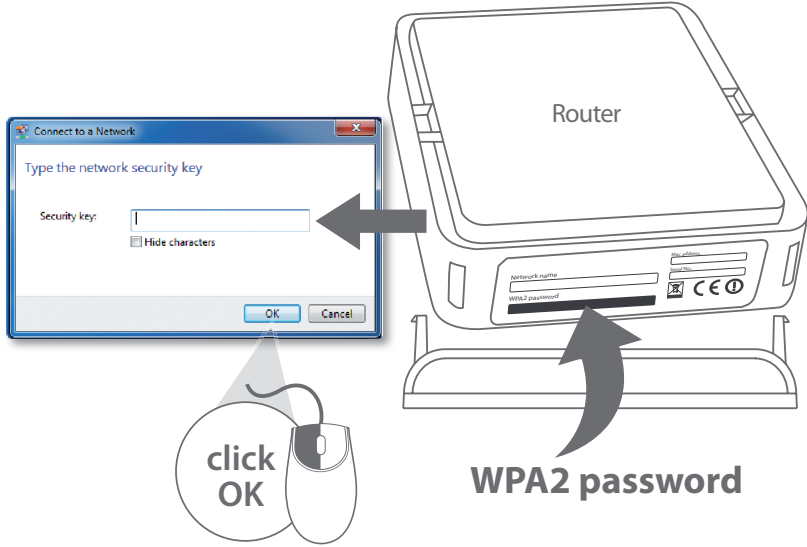


# Mac

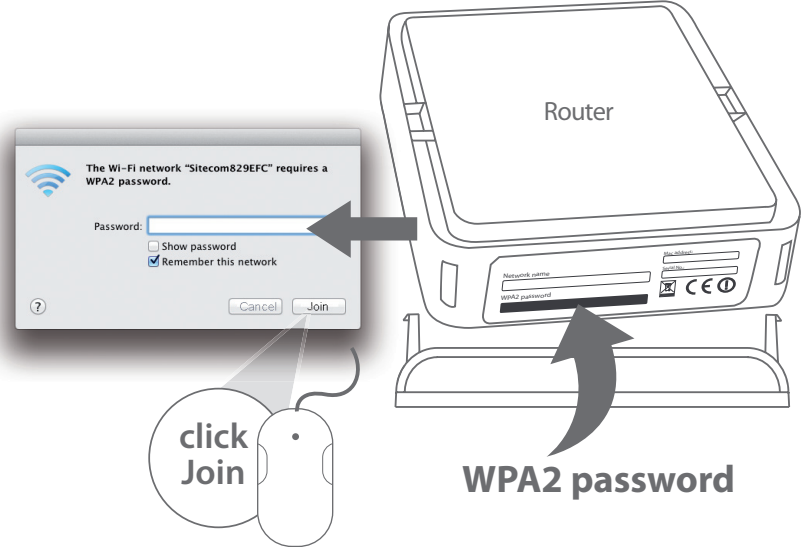


C

PC

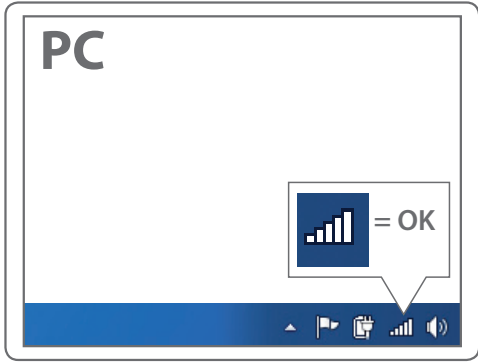


Mac





D



**Done. Enjoy!**

Trouble? [www.sitecom.com/helpdesk](http://www.sitecom.com/helpdesk)



Register this product online  
within 3 weeks of purchase and  
get a free **10 year** warranty

[www.sitecom.com/warranty](http://www.sitecom.com/warranty)