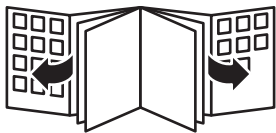


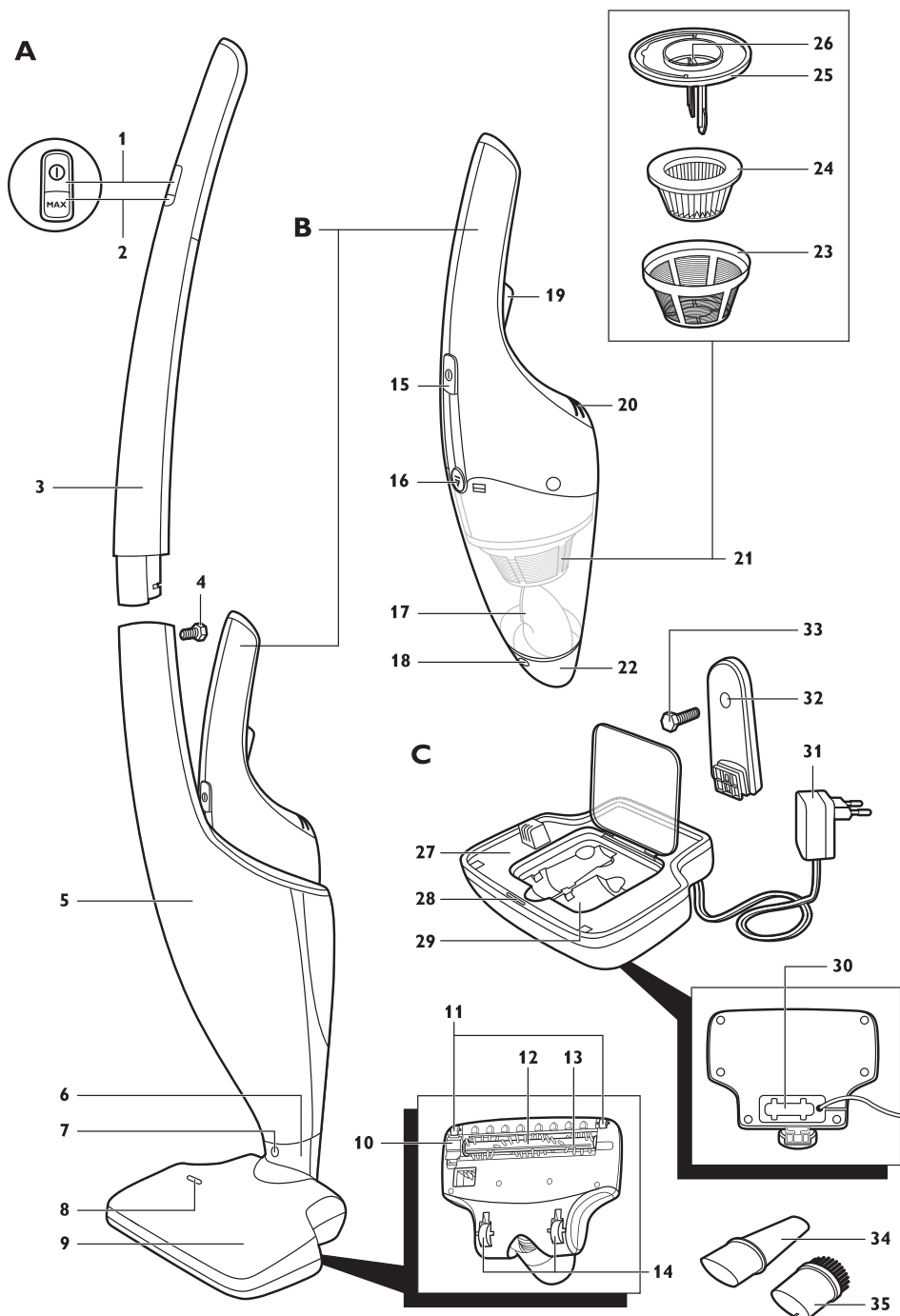
Register your product and get support at
www.philips.com/welcome

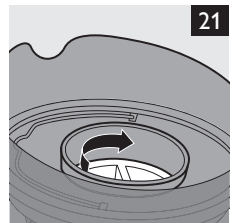
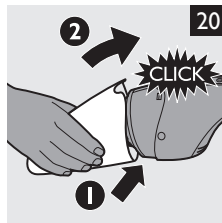
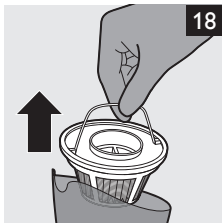
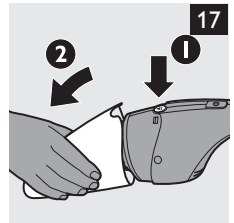
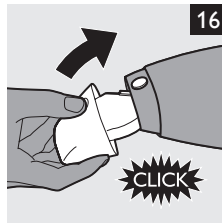
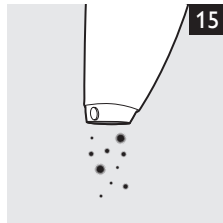
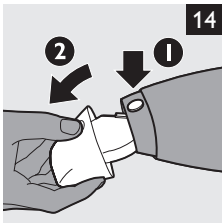
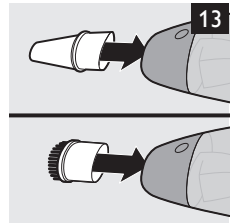
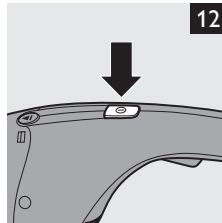
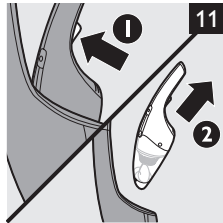
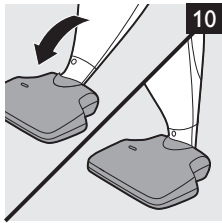
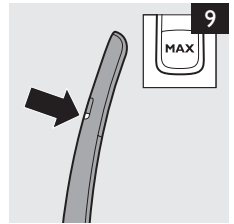
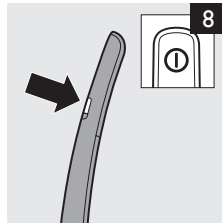
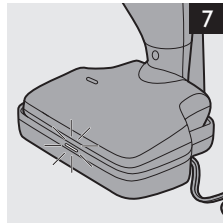
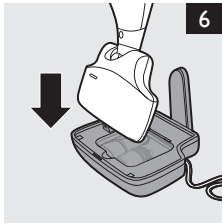
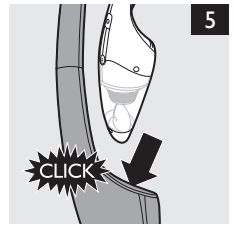
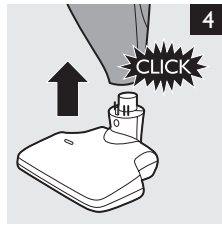
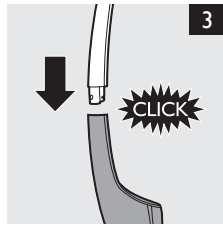
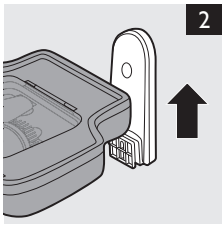
FC6161



PHILIPS







Introduction

Congratulations on your purchase and welcome to Philips! To fully benefit from the support that Philips offers, register your product at www.philips.com/welcome.

General description (Fig. 1)

A Stick

- 1 On/off button
- 2 MAX button for maximum power
- 3 Upper stick part
- 4 Screw to attach upper stick part to lower stick part
- 5 Lower stick part
- 6 Floor nozzle joint
- 7 Floor nozzle release button
- 8 'Brush blocked' light
- 9 Floor nozzle
- 10 Retainer
- 11 Front wheels
- 12 Roller brush
- 13 Cutting groove
- 14 Rear wheels

B Handheld vacuum cleaner

- 15 On/off button
- 16 Dust compartment release button
- 17 Dust compartment
- 18 Nozzle release button
- 19 Handheld vacuum cleaner release button
- 20 Exhaust air openings
- 21 Filter unit
- 22 Detachable nozzle
- 23 Outer filter
- 24 Inner filter
- 25 Filter holder
- 26 Filter rattle mechanism

C Accessories

- 27 Charging base
- 28 Charging light
- 29 Storage compartment
- 30 Cord storage facility
- 31 Adapter
- 32 Back support of charging base
- 33 Wall mounting screw
- 34 Crevice tool
- 35 Brush tool

Important

Read this user manual carefully before you use the appliance and save it for future reference.

Danger

- Never suck up water or any other liquid. Never suck up flammable substances and do not suck up ashes until they are cold.
- Never immerse the appliance, the charging base or the adapter in water or any other liquid, nor rinse it under the tap.

Warning

- Check if the voltage indicated on the adapter corresponds to the local mains voltage before you connect the appliance.
- Do not use the vacuum cleaner; the charging base or the adapter if it is damaged.
- If the adapter or charging base is damaged, always have it replaced with one of the original type in order to avoid a hazard.
- The adapter contains a transformer. Do not cut off the adapter to replace with another plug, as this causes a hazardous situation.
- This appliance is not intended for use by persons (including children) with reduced physical, sensory or mental capabilities, or lack of experience and knowledge, unless they have been given supervision or instruction concerning use of the appliance by a person responsible for their safety.
- Children should be supervised to ensure that they do not play with the appliance.

Caution

- Remove the adapter from the wall socket before you clean the charging base.
- Only charge the vacuum cleaner with the adapter and charging base supplied. During charging, the adapter feels warm to the touch. This is normal.
- Always switch off the vacuum cleaner after use.
- The voltage on the contact strips in the charging base is low and therefore not dangerous.
- Never block the exhaust air openings during vacuuming.
- Switch off the appliance when you charge it.
- Always use the vacuum cleaner with the filter unit assembled.

Electromagnetic fields (EMF)

This Philips appliance complies with all standards regarding electromagnetic fields (EMF). If handled properly and according to the instructions in this user manual, the appliance is safe to use based on scientific evidence available today.

Before first use

- 1** Remove any protective foil or plastic from the appliance.
- 2** Attach the back support to the back of the charging base ('click') (Fig. 2).

Note: You only have to do this once. Never disassemble the back support from the charging base.

- 3** For better stability, you must mount the charging base to the wall. To do so, drive the screw supplied through the hole in the back support into the wall.

- 4** Place the upper stick part on the lower stick part ('click') (Fig. 3).

Note: Make sure that the recesses of the upper stick fit exactly on the projections of the lower stick.

Note: You only have to do this once. Never disassemble the upper stick from the lower stick.

- 5** Fasten the screw with a screwdriver or coin.
- 6** Place the stick on the floor nozzle ('click') (Fig. 4).

Preparing for use**Charging the batteries**

It takes approx. 7 hours to fully charge the batteries.

- 1** Put the adapter of the charging base in the wall socket.
- 2** Place the handheld vacuum cleaner in the stick ('click') (Fig. 5).

Note: Make sure the handheld vacuum cleaner is switched off when you place it in the stick.

3 Place the appliance on the charging base (Fig. 6).

► The charging light goes on to indicate that the appliance is charging. (Fig. 7)

Note: The charging light does not give any information about the battery charge level.

► When the batteries are fully charged, the charging process stops and the charging light goes out to save energy.

Note: You can leave the appliance on the charging base, even when the batteries are fully charged. Every 5 minutes, the charging light lights up for 3 seconds. This indicates that the charging base checks if the batteries are still fully charged.

Note: If you place the appliance on the charging base while it is switched on, the appliance switches off automatically after 2 seconds and the batteries do not charge.

Saving energy

If you are not going to use the appliance for a longer period of time, remove the adapter from the wall socket to save energy.

Using the appliance

The power of this cordless stick vacuum cleaner cannot be compared with that of a full-size standard vacuum cleaner. Its cleaning performance on soft floors may not entirely match that of a standard vacuum cleaner, but its cleaning performance on hard floors is just as good.

Using the stick

You can use the stick to clean floors and carpets.

When you use the stick, always make sure the dust compartment is attached to the handheld vacuum cleaner, to prevent damage to the handheld vacuum cleaner.

1 Place the handheld vacuum cleaner properly in the stick ('click'). (Fig. 5)

2 Press the on/off button on the stick to switch on the appliance (Fig. 8).

- The appliance starts to operate at normal speed. Use this speed for optimal operating time and minimal noise. The operating time at this speed is more than 20 minutes.
- Press the MAX button if you want to operate the appliance at maximum speed. Use this speed for optimal cleaning performance. The operating time at this speed is 11 minutes (Fig. 9).
 - If you want to switch back to normal speed, press the MAX button again.

Note: During use, the 'brush blocked' light may flash red to indicate that the roller brush is blocked. If this happens, you have to remove the item that is blocking the brush or clean the brush (see chapter 'Cleaning').

3 If you want to leave the appliance for a while or if you want to remove the handheld vacuum cleaner from the stick during use, you can use the parking position. Push the stick towards the floor nozzle to put it in parking position (Fig. 10).

4 After use, press the on/off button to switch off the appliance.

Using the handheld vacuum cleaner

You can use the handheld vacuum cleaner without the stick to vacuum small and hard-to-reach areas, such as tables, furniture, car seats etc.

When the handheld vacuum cleaner is fully charged, it has an operating time of 12 minutes.

1 If the handheld vacuum cleaner is placed in the stick, press the on/off button on the stick to switch off the appliance before you remove the handheld vacuum cleaner from the stick.

Note: If you remove the handheld vacuum cleaner when the appliance is switched on at normal speed, the handheld vacuum cleaner operates at reduced power when you take it out. To make sure the handheld vacuum cleaner operates at full power, switch it off and back on again.

- 2** Press the handheld vacuum cleaner release button (1) and remove the handheld vacuum cleaner from the stick (2) (Fig. 11).
- 3** Press the on/off button to switch on the handheld vacuum cleaner (Fig. 12).
- 4** After use, press the on/off button again to switch off the handheld vacuum cleaner.

Note: Make sure you switch off the handheld vacuum cleaner before you put it back into the stick.

Note: If you put the handheld vacuum cleaner back into the stick when it is still switched on, the roller brush does not work and the cleaning performance is not optimal. To make the roller brush operate, press the on/off button on the stick to switch off the appliance and then press the on/off button again to switch the appliance back on again.

Accessories

The handheld vacuum cleaner comes with the following accessories:

- a crevice tool to vacuum corners or narrow gaps.
- a brush tool to clean delicate surfaces.

- 1** Take the accessory you want to use from the storage compartment of the charging base.
- 2** Attach the accessory to the detachable nozzle (Fig. 13).

Cleaning

Always remove the adapter from the wall socket before you clean the charging base.

- 1** Clean the outside of the handheld vacuum cleaner, the outside of the stick and the outside of the charging base with a damp cloth.
- 2** If you want to empty and clean the dust compartment or clean the filter unit, follow the instructions in sections 'Emptying and cleaning the dust compartment' and 'Cleaning the filter unit' below.

Emptying and cleaning the dust compartment

Make sure you empty and clean the dust compartment of the handheld vacuum cleaner regularly.

Note: It is not necessary to hold the handheld vacuum cleaner over a dustbin when you open it.

Quick emptying

You can empty the dust compartment quickly in the following way:

- 1** Press the nozzle release button (1) and take the detachable nozzle off the handheld vacuum cleaner (2) (Fig. 14).
- 2** Shake the contents of the dust compartment into a dustbin (Fig. 15).
- 3** First attach the bottom of the detachable nozzle and then push the top of the detachable nozzle towards the vacuum cleaner until it locks into place ('click'). (Fig. 16)

Thorough cleaning

You can empty and clean the dust compartment thoroughly in the following way:

- 1** Hold the handheld vacuum cleaner over a dustbin, press the dust compartment release button (1) and remove the dust compartment (2) (Fig. 17).
- 2** Remove the filter unit from the dust compartment (Fig. 18).

- 3** Shake the dust compartment with your free hand to empty the contents into a dustbin (Fig. 19).
- 4** If necessary, clean the dust compartment with a damp cloth.
- 5** If necessary, clean the filter unit. See section 'Cleaning the filter unit' below.
- 6** Put the filter unit back into the dust compartment.
- 7** To reattach the dust compartment, align the slot on the dust compartment with the projection on the handheld vacuum cleaner. First attach the bottom of the dust compartment (1) and then push the top of the dust compartment towards the vacuum cleaner (2) until it locks into place ('click'). (Fig. 20)

Cleaning the filter unit

Make sure you clean the filter unit regularly.

Quick cleaning

You can clean the filter unit quickly in the following way:

- 1** Hold the handheld vacuum cleaner over a dustbin, press the dust compartment release button (1) and remove the dust compartment (2) (Fig. 17).
- 2** Turn the rattle mechanism inside the filter holder a few times. (Fig. 21)
 - The rattle mechanism loosens the dust from the inner filter.
- 3** To reattach the dust compartment, align the slot on the dust compartment with the projection on the handheld vacuum cleaner. First attach the bottom of the dust compartment (1) and then push the top of the dust compartment towards the vacuum cleaner (2) until it locks into place ('click'). (Fig. 20)

Thorough cleaning

You can clean the filter unit thoroughly in the following way:

- 1** Hold the appliance over a dustbin, press the dust compartment release button (1) and remove the dust compartment (2) (Fig. 17).
- 2** Remove the filter unit from the dust compartment (Fig. 18).
- 3** Turn the outer filter clockwise (1) and remove it from the filter holder (2) (Fig. 22).
- 4** Turn the inner filter clockwise (1) and remove it from the filter holder (2) (Fig. 23).
- 5** Clean the inner filter and the outer filter with a brush or with a standard vacuum cleaner if they are very dirty.

Note: If necessary you can clean the inner filter and the outer filter in cold or lukewarm water. Dry the inner and outer filter thoroughly before you use the filter unit again.

- 6** Place the inner filter back onto the filter holder (1) and turn it anticlockwise to attach it (2). (Fig. 24)
- 7** Place the outer filter back onto the filter holder (1) and turn it anticlockwise to attach it (2). (Fig. 25)
- 8** Put the filter unit back into the dust compartment (Fig. 26).

Note: Make sure you insert the filter unit in the correct way. The word 'up' must point towards the top of the dust compartment.

- 9** To reattach the dust compartment, align the slot on the dust compartment with the projection on the handheld vacuum cleaner. First attach the bottom of the dust

compartment (1) and then push the top of the dust compartment towards the vacuum cleaner (2) until it locks into place ('click'). (Fig. 20)

Cleaning the floor nozzle joint

The joint of the floor nozzle may get blocked by large dirt particles. Follow the steps below to clean the joint.

- 1** Press the on/off button on the stick to switch off the appliance.
- 2** Press the handheld vacuum cleaner release button (1) and remove the handheld vacuum cleaner from the stick (2) (Fig. 11).
- 3** Press the floor nozzle release button (1) to detach the stick from the floor nozzle (2) (Fig. 27).
- 4** Remove the large dirt particles from the joint.
- 5** Place the stick back onto the floor nozzle ('click').

Cleaning the roller brush

When the 'brush blocked' light starts to flash red, the roller brush is blocked. If this happens, follow the steps below to clean the roller brush.

- 1** Press the on/off button on the stick to switch off the appliance.
- 2** Press the handheld vacuum cleaner release button (1) and remove the handheld vacuum cleaner from the stick (2) (Fig. 11).
- 3** Press the floor nozzle release button (1) to detach the stick from the floor nozzle (2).
- 4** Turn the floor nozzle upside down.
- 5** Move the roller brush until the cutting groove faces you. (Fig. 28)
- 6** Use a pair of scissors to cut the hairs, threads etc. that have collected around the roller brush. (Fig. 29)
- 7** Remove fluff, hairs and other dirt from the roller brush.

Note: You can also remove the roller brush for easier cleaning.

Removing the roller brush

- 1** Switch off the appliance.
- 2** Turn the floor nozzle upside down and open the retainer. (Fig. 30)
- 3** Lift the roller brush out of the floor nozzle (Fig. 31).
- 4** Remove fluff, hairs and other dirt from the roller brush and the groove.

Reinserting the roller brush

- 1** First insert the end of the roller brush furthest from the retainer into the nozzle, then insert the end of the roller brush closest to the retainer into the nozzle. (Fig. 32)
- 2** Close the retainer ('click'). (Fig. 33)

Note: If the roller brush is not properly inserted, you cannot close the retainer.

Storage

- 1 Put the accessories in the storage compartment of the charging base (Fig. 34).
- 2 Push the stick towards the floor nozzle to put it into parking position (Fig. 10).
- 3 You can store the appliance on the charging base with the handheld vacuum cleaner placed in the stick (Fig. 6).

Replacement

We advise you to replace the inner filter and the outer filter after a prolonged period of use or if you can no longer clean them properly.

New inner filters are available under type number 4322 004 93471. Contact your Philips dealer:

Replacing the inner and outer filter

- 1 Remove the filter unit from the dust compartment (Fig. 18).
- 2 Turn the outer filter clockwise (1) and remove it from the filter holder (2) (Fig. 22).
- 3 Turn the inner filter clockwise (1) and remove it from the filter holder (2) (Fig. 23).
- 4 Place a new inner filter on the filter holder (1) and turn it anticlockwise to attach it (2) (Fig. 24).
- 5 Place a new outer filter on the filter holder (1) and turn it anticlockwise to attach it (2) (Fig. 25).
- 6 Put the filter unit back into the dust compartment (Fig. 26).

Note: Make sure you insert the filter unit in the correct way. The word 'up' must point towards the top of the dust compartment.

Accessories

New inner filters are available under type number 4322 004 93471 . Contact your Philips dealer:

Environment

- Do not throw away the appliance with the normal household waste at the end of its life, but hand it in at an official collection point for recycling. By doing this, you help to preserve the environment (Fig. 35).
- The built-in rechargeable batteries contain substances that may pollute the environment. Remove the batteries when you discard the appliance. Do not throw away the batteries with the normal household waste, but hand them in at an official collection point. You can also take the appliance to a Philips service centre. The staff of this centre will remove the batteries for you and will dispose of them in an environmentally safe way (Fig. 36).

Removing the rechargeable batteries

NiMH batteries may explode when exposed to high temperatures or fire.

Only remove the rechargeable batteries if they are completely empty.

You can remove the rechargeable batteries in the following way.

- 1 Let the handheld vacuum cleaner run until it stops.
- 2 Remove the panel with the exhaust air openings from the handheld vacuum cleaner with a screwdriver (Fig. 37).
- 3 Remove the panel on the handle with your fingernail. (Fig. 38)

- 4 Undo the screws on the side of the handheld vacuum cleaner. (Fig. 39)
- 5 Press the dust compartment release button and separate the two housing parts.
- 6 Cut the wires connected to the rechargeable batteries one by one (Fig. 40).
- 7 Remove the rechargeable batteries (Fig. 41).

Guarantee and service

If you need service or information or if you have a problem, please visit the Philips website at www.philips.com or contact the Philips Consumer Care Centre in your country (you find its phone number in the worldwide guarantee leaflet). If there is no Consumer Care Centre in your country, go to your local Philips dealer.

Troubleshooting

This chapter summarises the most common problems you could encounter with your appliance. Please read the different sections for more details. If you are unable to solve the problem, please contact the Philips Consumer Care Centre in your country.

Problem	Cause	Solution
The appliance does not work.	The batteries may be low.	Recharge the batteries.
	If you are using the stick, the contact strips on the stick and/or on the handheld vacuum cleaner may be dirty or may not make proper contact.	Wipe the contact strips on the stick and on the handheld vacuum cleaner clean with a dry cloth and then place the handheld vacuum cleaner in the stick. Move the handheld vacuum cleaner slightly to the left and right a few times until you hear a click.
The charging light does not go on and/or the appliance does not charge.	You may not have placed the appliance on the charging base properly.	Place the appliance on the charging base properly. The charging light goes on to indicate that the appliance is charging.
	You may not have put the adapter in the wall socket properly.	Put the adapter in the wall socket properly.
	You may have put the appliance on the charging base with the handheld vacuum cleaner switched on.	If you place the appliance on the charging base with the handheld vacuum cleaner switched on, the appliance switches off automatically after two seconds and the batteries do not charge.
The charging light does not go on and/or the appliance does not charge.	The contact strips on the stick and/or on the handheld vacuum cleaner may be dirty or may not make proper contact.	Wipe the contact strips on the stick and the handheld vacuum cleaner clean with a dry cloth and then place the handheld vacuum cleaner in the stick. Move the handheld vacuum cleaner slightly to the left and right a few times until you hear a click.

Problem	Cause	Solution
	If you can switch on the appliance after a few hours charging, the charging light is defective.	Take the appliance to your dealer or a service centre authorised by Philips for repair.
	If the appliance still does not charge, it may be defective.	Take the appliance to your dealer or a service centre authorised by Philips for examination or repair.
The handheld vacuum cleaner does not vacuum properly.	The dust compartment may not be attached properly.	Attach the dust compartment to the handheld vacuum cleaner properly.
	The dust compartment may be full.	Empty the dust compartment.
	If you are using the stick, the contact strips on the stick and/or on the handheld vacuum cleaner may be dirty or may not make proper contact.	Wipe the contact strips on the stick and the handheld vacuum cleaner clean with a dry cloth. Then place the handheld vacuum cleaner in the stick. Move the handheld vacuum cleaner slightly to the left and right a few times until you hear a click.
	The floor nozzle joint may be blocked by large dirt particles.	Clean the floor nozzle joint (see chapter 'Cleaning').
Dust escapes from the handheld vacuum cleaner.	The dust compartment may be full.	Empty the dust compartment.
	The dust compartment may not be attached properly.	Attach the dust compartment to the handheld vacuum cleaner properly.
	The filter unit may not be placed in the dust compartment properly.	Place the filter unit in the dust compartment properly.
The handheld vacuum cleaner does not work properly when one of the accessories is attached to the detachable nozzle.	The dust compartment may be full.	Empty the dust compartment.
	The accessory may be obstructed.	Remove the obstruction from the accessory.
	The filter unit may be clogged.	Clean the inner filter and the outer filter (see chapter 'Cleaning').
The 'brush blocked' light flashes red.	The roller brush is blocked.	Clean the roller brush (see chapter 'Cleaning').

Problem	Cause	Solution
	The 'brush blocked' light may flash red because you use the stick on deep-pile carpet.	In this case the roller brush is not blocked and the suction power does not decrease. You can continue to use the stick to clean the carpet.
The appliance produces a lot of noise.	There may be solid particles in the dust compartment.	Empty the dust compartment and clean the filter unit (see chapter 'Cleaning').
	The floor nozzle joint may be blocked by large dirt particles.	Clean the floor nozzle joint (see chapter 'Cleaning').
The appliance does not pick up dirt effectively.	The roller brush is clogged.	Clean the roller brush (see chapter 'Cleaning').

简介

感谢您的惠顾，欢迎光临飞利浦！为了您能充分享受飞利浦提供的支持，请在 www.philips.com/welcome 上注册您的产品。

一般说明 (图 1)

A 握柄

- 1 开/关按钮
- 2 最大吸力 MAX 按钮
- 3 把杆上半部分
- 4 将握柄上半部分旋接到握柄下半部分
- 5 把杆下半部分
- 6 吸嘴接合点
- 7 吸嘴拆卸按钮
- 8 “滚刷阻塞”指示灯
- 9 吸嘴
- 10 固定器
- 11 前轮
- 12 滚刷
- 13 切割沟槽
- 14 后轮

B 手持式吸尘器

- 15 开/关按钮
- 16 集尘桶拆卸按钮
- 17 集尘桶
- 18 吸嘴拆卸按钮
- 19 手持式吸尘器拆卸按钮
- 20 排气口
- 21 过滤器部件
- 22 可拆卸式吸嘴
- 23 外层过滤网
- 24 内层过滤网
- 25 滤芯固定架
- 26 滤网装置

C 附件

- 27 充电座
- 28 充电指示灯
- 29 储藏空间
- 30 电源线存储装置
- 31 适配器
- 32 充电座靠背
- 33 壁挂式螺钉
- 34 缝隙吸嘴
- 35 毛刷

注意事项

使用本产品之前，请仔细阅读本使用说明书，并妥善保管以备日后参考。

危险

- 切勿吸入水或其它液体。切勿吸入易燃物质，也不要吸入未冷却的灰烬。
- 切勿将本产品、充电座或适配器浸入水或任何其它液体中，也不要将它们放在水龙头下冲洗。

警告

- 在将本产品连接电源前，务必检查当地的电压是否与电源适配器所标电压一致。
- 如果吸尘器、充电座或适配器已损坏，请勿再使用。
- 如果适配器或充电座损坏，必须用原装型号更换，以免发生危险。
- 电源适配器内含有一个变压器。切勿自行更换插头，否则将导致严重后果。
- 本产品不打算由肢体不健全、感觉或精神上有障碍或缺乏相关经验和知识的人（包括儿童）使用，除非有负责他们安全的人对他们使用本产品进行监督或指导。
- 应照看好儿童，避免他们将产品当作玩具。

注意

- 清洁充电座之前，务必将适配器从墙上的电源插座中拔出。
- 只能用本产品随附的适配器和充电座为吸尘器充电。充电期间，适配器会有微热，这是正常现象。
- 使用后，请务必关闭吸尘器。
- 充电座接触片上的电压为低电压，因此没有危险。
- 吸尘时切勿阻塞排气口。
- 充电前请关闭产品。
- 使用吸尘器时，请确保装上过滤部件。

电磁场 (EMF)

这款飞利浦产品符合关于电磁场 (EMF) 的相关标准。据目前的科学证明，如果正确使用并按照本用户手册中的说明进行操作，本产品是安全的。

首次使用之前

1 撕掉产品上的保护膜或塑料保护罩。

2 将靠背装到充电座背面（可听到“咔哒”一声）。(图 2)

注意：您只需要安装一次。不需再拆下充电器靠背。

3 为了获得更好的稳定性，必须把充电座安装在墙壁上。将螺丝穿过靠背上的孔固定于墙上。

4 将握柄上半部分装到握柄下半部分（可听到“咔哒”一声）。(图 3)

注意：确保握柄上半部分的凹陷部位正好卡入握柄下半部分的凸起部位。

注意：您只需要按装一次。不需要再把握柄上半部分拆下。

5 用螺丝刀或硬币固定螺钉。

6 将握柄卡入吸嘴（可听到“咔哒”一声）。(图 4)

使用准备**为电池充电**

电池充满电大约需要 7 小时。

1 将充电座的适配器插入电源插座。

2 将手持式吸尘器插接到握柄上（可听到“咔哒”一声）。(图 5)

注意：将手持式吸尘器插接到握柄时，确保关闭产品的电源。

3 将产品插接到充电座。(图 6)

▶ 充电指示灯亮起，表示吸尘器正在充电。(图 7)

注意：充电指示灯无法指示电池的充电量。

▶ 电池充满电后，充电过程停止，然后充电指示灯熄灭以节约能源。

18 简体中文

注意：您可以将产品留在充电座中，即使电池已完全充电。每隔 5 分钟，充电指示灯就会亮起 3 秒。这表示充电座正在检查电池是否仍然充满电。

注意：如果您将启动状态下的产品放在充电座上，产品会在 2 秒钟后自动关闭，并且电池不充电。

节约能源

如果在较长一段时间内不再使用本产品，请将适配器从插座中拔下，以节约能源。

使用本产品

不要将本款无线立式吸尘器的吸力与全尺寸标准吸尘器的吸力比较。它在软地板上的清洁效果可能与标准吸尘器不完全相同，但在硬地板上则完全一样。

使用握柄

您可以使用握柄来清洁地板和地毯。

使用握柄时，务必确保手持式吸尘器上装了集尘桶，以免损坏手持式吸尘器。

1 将手持式吸尘器正确插接到握柄上（可听到“咔哒”一声）。(图 5)

2 按下握柄上的开/关按钮打开产品电源。(图 8)

▶ 产品开始以正常速度工作。使用这种速度可以优化操作时间并减少噪音。这种速度下的工作时间可超过 20 分钟。

- 如果要以最高速度工作，请按 MAX（最大）按钮。使用这种速度可以优化清洁效能。这种速度下的工作时间为 11 分钟。(图 9)
- 如果您要切换回正常速度，请再次按 MAX（最大）按钮。

注意：在使用期间，“滚刷阻塞”指示灯可能闪烁，以表示滚刷被阻塞。如果出现这种情况，您必须清除阻塞滚刷的物品或清洁滚刷（见“清洁”一章）。

3 如果您想将产品放置一段时间，或者要在使用期间从握柄取下手持式吸尘器，您可以使用摆放固定位置。将握柄向吸嘴推动，使其进入摆放固定位置。(图 10)

4 使用后，按开关按钮关闭产品。

使用手持式吸尘器

您可以将不带握柄的手持式吸尘器用于清洁小面积和难以触及的区域，例如桌面、家私、汽车座椅等等。

当手持式吸尘器充满电时，可持续工作 12 分钟。

1 如果手持式吸尘器插接在握柄上，在从握柄上取下手持式吸尘器之前，请按下握柄上的开/关按钮关闭产品。

注意：如果在产品以常速运转时取下手持式吸尘器，则手持式吸尘器吸力更低。为确保以全部吸力使用手持式吸尘器，请将其关闭再重新打开。

2 按手持式吸尘器释放按钮 (1) 并从握柄取下手持式吸尘器 (2)。(图 11)

3 按开/关按钮启动手持式吸尘器。(图 12)

4 使用后，再次按开/关按钮关闭手持式吸尘器。

注意：确保您先关闭手持式吸尘器再将其插回握柄。

注意：如果在手持式吸尘器仍然开启的情况下将其插回握柄，滚刷将无法工作，并且清洁效能不是最佳。要使滚刷运转，请按握柄上的开/关按钮关闭产品，然后再次按开/关按钮打开产品。

附件

手持式吸尘器随附有以下附件：

- 一个用于角落或狭窄缝隙吸尘的缝隙吸嘴。
- 一把用于清洁细致表面的毛刷。

- 1** 从充电座的储藏空间取出您要使用的附件。
- 2** 将附件安装到可拆卸式吸嘴上。(图 13)

清洁

清洁充电座之前，将适配器从墙上的电源插座中拔出。

- 1** 用湿布清洁手持式吸尘器的表面、握柄的表面以及充电座的表面。
- 2** 如果您要倒空和清洁集尘桶，或清洁过滤器，请按照下面“倒空并清洁集尘桶”和“清洁过滤器”部分中的说明执行操作。

倒空并清洁集尘桶

确保定期倒空并清洁手持式吸尘器的集尘桶。

注意：打开垃圾箱时，无需将手持式吸尘器放在垃圾箱上面。

快速倒空

您可以按照以下方法快速倒空集尘桶：

- 1** 按吸嘴拆卸按钮 (1)，从手持式吸尘器 (2) 上取下可拆卸式吸嘴。(图 14)
- 2** 抖动集尘桶中的尘垢以将其倒入垃圾桶。(图 15)
- 3** 先装可拆卸式吸嘴的底部，然后将可拆卸式吸嘴的顶部推向吸尘器，直到其锁入到位（可听到“咔哒”一声）。(图 16)

彻底清洁

您可以按照以下方法彻底倒空集尘桶：

- 1** 将手持式吸尘器拿到垃圾桶的上方，按下集尘桶拆卸按钮 (1) 然后卸下集尘桶 (2)。(图 17)
- 2** 将过滤器从集尘桶中取出。(图 18)
- 3** 用另一只手抖动集尘桶，将尘垢倒入垃圾桶。(图 19)
- 4** 如果必要，可用湿布清洁集尘桶。
- 5** 如果必要，应清洁过滤器。见下面“清洁过滤器”部分。
- 6** 将过滤网重新装回集尘桶。
- 7** 要重新安装集尘桶，可以将集尘桶的槽与手持式吸尘器的突出部分对齐。首先连接集尘桶的底部 (1)，然后将集尘桶的顶部推向吸尘器 (2)，直到其锁定到位（可听到“咔哒”一声）。(图 20)

清洁过滤器

确保定期清洁过滤器。

快速清洁

您可以按照以下方法快速清洁过滤器：

- 1** 将手持式吸尘器拿到垃圾桶的上方，按下集尘桶拆卸按钮 (1) 然后卸下集尘桶 (2)。(图 17)
- 2** 转几次过滤器架内的震动装置。(图 21)

震动装置会使过滤器内部的灰尘松动。

3 要重新安装集尘桶，可以将集尘桶的槽与手持式吸尘器的突出部分对齐。首先连接集尘桶的底部 (1)，然后将集尘桶的顶部推向吸尘器 (2)，直到其锁定到位 (可听到“咔哒”一声)。(图 20)

彻底清洁

您可以按照以下方法彻底清洁过滤器：

1 将吸尘器拿到垃圾箱上方，按下集尘桶拆卸按钮 (1)，然后卸下集尘桶 (2)。(图 17)

2 将过滤器从集尘桶中取出。(图 18)

3 顺时针旋转外层过滤器 (1)，将其从过滤器架上取下 (2)。(图 22)

4 顺时针旋转内层过滤器 (1)，将其从过滤器架上取下 (2)。(图 23)

5 如果过滤网很脏，请用毛刷或标准吸尘器清洁内层过滤网和外层过滤网。

注意：如果必要，还可以用冷水或温水清洁内层和外层过滤器。在您再次使用过滤器之前，务必将内层和外层过滤器彻底擦干。

6 将外层过滤器放回过滤器架 (1)，然后逆时针旋转将其安装好 (2)。(图 24)

7 将内层过滤器放回过滤器架 (1)，然后逆时针旋转将其安装好 (2)。(图 25)

8 将过滤网重新装回集尘桶。(图 26)

注意：确保正确插入过滤器。“up”字样必须指向集尘桶的顶部。

9 要重新安装集尘桶，可以将集尘桶的槽与手持式吸尘器的突出部分对齐。首先连接集尘桶的底部 (1)，然后将集尘桶的顶部推向吸尘器 (2)，直到其锁定到位 (可听到“咔哒”一声)。(图 20)

清洁吸嘴接合点

吸嘴的接合点可能被大块污垢阻塞。请按照下面的步骤清洁接合点。

1 按下握柄上的开/关按钮关闭产品电源。

2 按手持式吸尘器释放按钮 (1) 并从握柄取下手持式吸尘器 (2)。(图 11)

3 按吸嘴拆卸按钮 (1) 将握柄从吸嘴取下 (2)。(图 27)

4 清理接合点处的大块污垢。

5 将握柄插回吸嘴 (可听到“咔哒”一声)。

清洁滚刷

当“滚刷阻塞”指示灯开始闪烁红色时，即表示滚刷阻塞。如果发生这种情况，请按照下面的步骤清洁滚刷。

1 按下握柄上的开/关按钮关闭产品电源。

2 按手持式吸尘器释放按钮 (1) 并从握柄取下手持式吸尘器 (2)。(图 11)

3 按吸嘴拆卸按钮 (1) 将握柄从吸嘴取下 (2)。

4 将两用吸尘嘴倒转。

5 移动滚刷，直到切割沟槽朝向您。(图 28)

6 使用一把剪刀剪掉缠住滚刷的毛发、线头等等。(图 29)

7 从滚刷上摘下绒毛、毛发及其他污物。

注意：您也可以拆下滚刷以便于清洁。

拆下滚刷

- 1 关闭产品。
- 2 将两用毛刷倒转并打开固定器。(图 30)
- 3 将滚刷从吸嘴提出。(图 31)
- 4 从滚刷和沟槽上摘下绒毛、毛发及其他污物。

将滚刷插回。

- 1 先将滚刷距固定器最远的一端插入吸嘴，然后再将滚刷距固定器最近的一端插入吸嘴。(图 32)
- 2 将固定器关闭（可听到“咔哒”一声）。(图 33)

注意：如果未正确插入滚刷，则不能关闭固定器。

存储

- 1 将附件放在充电座的储藏空间中。(图 34)
- 2 将握柄向地板吸嘴推动，将其锁定在固定位置。(图 10)
- 3 您可将产品存放在充电座上，并将手持式吸尘器插接在握柄上。(图 6)

更换

在长时间使用之后或者无法再清洁干净时，我们建议您更换内层过滤器。新的内层过滤器供应型号为 4322 004 93471。请联系您的飞利浦经销商。

更换内层和外层过滤器

- 1 将过滤器从集尘桶中取出。(图 18)
- 2 顺时针旋转外层过滤器 (1)，将其从过滤器架上取下 (2)。(图 22)
- 3 顺时针旋转内层过滤器 (1)，将其从过滤器架上取下 (2)。(图 23)
- 4 将新的内层过滤器放在过滤器架上 (1)，然后逆时针旋转将其安装好 (2)。(图 24)
- 5 将新的外层过滤器放在过滤器架上 (1)，然后逆时针旋转将其安装好 (2)。(图 25)
- 6 将过滤网重新装回集尘桶。(图 26)

注意：确保正确插入过滤器。“up”字样必须指向集尘桶的顶部。

附件

新的内层过滤器供应型号为 4322 004 93471。请联系您的飞利浦经销商。

环保

- 弃置产品时，请不要将其与一般生活垃圾堆放在一起；应将其交给官方指定的回收中心。这样做有利于环保。(图 35)
- 内置可充电电池含有可污染环境的物质。在扔掉本产品前取出电池。请勿将电池与普通家庭垃圾一同丢弃，而应将其送到正式的回收点，也可以将产品交给飞利浦服务中心。维修中心的员工会帮您取出电池，并以环保的方式处理。(图 36)

卸下充电电池

镍氢电池在高温或燃烧环境可能发生爆炸。

只在充电电池的电量完全用尽时将其取出。

您可以按照以下方法取出充电电池。

- 1 让手持式吸尘器运行到停止为止。
- 2 用螺丝刀从手持式吸尘器卸下带排气孔的面板。(图 37)
- 3 用指甲取下手柄上的面板。(图 38)
- 4 拧下手持式吸尘器侧面上的螺钉。(图 39)
- 5 按集尘桶拆卸按钮，将两个外壳部件分离。
- 6 逐根剪掉连接到充电电池的电线。(图 40)
- 7 卸下充电电池。(图 41)

保修与服务

如果您需要服务或信息，或者有任何疑问，请访问飞利浦网站：www.philips.com。您也可以与所在国家/地区的飞利浦顾客服务中心联系（可从全球保修卡中找到其电话号码）。如果您的所在地没有飞利浦客户服务中心，可与当地的飞利浦经销商联系。

故障种类和处理方法

本章归纳了您的产品在使用时最常遇到的问题。有关详细说明，请参阅相关章节。如果您无法解决问题，请与贵国/地区的飞利浦客户服务中心联系。

问题	原因	解决方法
产品不能工作。	电池电量可能不足。	为电池充电。
	如果使用握柄，则握柄和/或手持式吸尘器上的接触片可能脏了或接触不良。	擦拭握柄和手持式吸尘器上的接触片。用干布清洁，然后将手持式吸尘器插接到握柄。将手持式吸尘器轻轻向左或向右移几次，直到听到“咔哒”一声。
充电指示灯不亮和/或产品不充电。	您可能没有将产品正确地放置在充电座上。	将本产品正确放在充电座上。充电指示灯亮，表示产品正在充电。
	您可能没有将适配器正确插入电源插座。	将适配器正确插入电源插座。
	您可能将产品放到充电座时手持式吸尘器开启。	如果您将产品放到充电座时手持式吸尘器开启，产品会在两秒后自动关闭并且电池不充电。
	握柄和/或手持式吸尘器上的接触片可能脏了或接触不良。	擦拭握柄和手持式吸尘器上的接触片。用干布清洁，然后将手持式吸尘器插接到握柄。将手持式吸尘器轻轻向左或向右移几次，直到听到“咔哒”一声。
	如果您在充电几小时后启动产品，则充电指示灯有故障。	请将本产品送往经销商处，或经飞利浦授权的服务中心进行维修。

问题	原因	解决方法
	如果产品仍不能充电，则可能有故障。	请将本产品送往经销商处，或经飞利浦授权的服务中心进行检查或维修
手持式吸尘器不能正常吸尘。	集尘桶可能没有正确安装。	将集尘桶正确安装到手持式吸尘器上。
	集尘桶可能已满。	清空集尘桶。
	如果使用握柄，则握柄和/或手持式吸尘器上的接触片可能脏了或接触不良。	擦拭握柄和手持式吸尘器上的接触片。用干布清洁，然后将手持式吸尘器插接到握柄。将手持式吸尘器轻轻向左或向右移几次，直到听到“咔哒”一声。
	吸嘴接合点可能被大块污垢阻塞。	清洁吸嘴接合点（见“清洁”一章）。
尘土从手持式吸尘器中溢出。	集尘桶可能已满。	清空集尘桶。
	集尘桶可能没有正确安装。	将集尘桶正确安装到手持式吸尘器上。
	过滤器可能没有正确放置在集尘桶中。	将过滤网正确放置到集尘桶中。
将一个附件安装到可拆卸式吸嘴时，手持式吸尘器不能正常工作。	集尘桶可能已满。	清空集尘桶。
	附件可能阻塞。	从附件中取出阻塞物。
	过滤器可能阻塞。	清洁内层过滤网和外层过滤网（见“清洁”一章）。
“滚刷阻塞”指示灯闪烁红色。	滚刷阻塞。	清洁滚刷（见“清洁”一章）。
	“滚刷阻塞”指示灯可能闪烁红色，因为您在长毛绒地毯上使用握柄。	在这种情况下，滚刷没有阻塞，吸力不会降低。您可以继续使用握柄清洁地毯。
产品噪音过大。	集尘桶内有固体颗粒。	倒空集尘桶并清洁过滤器（见“清洁”一章）。
	吸嘴接合点可能被大块污垢阻塞。	清洁吸嘴接合点（见“清洁”一章）。
产品无法有效地清扫尘土。	滚刷阻塞。	清洁滚刷（见“清洁”一章）。

PHILIPS

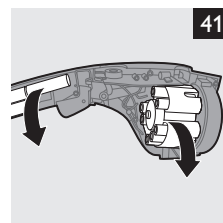
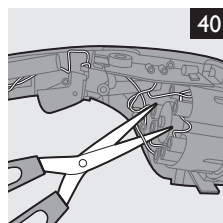
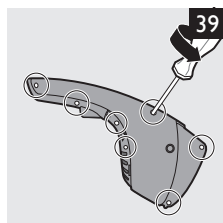
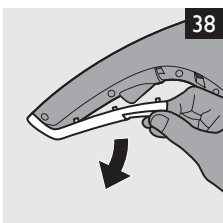
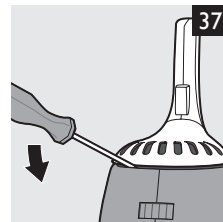
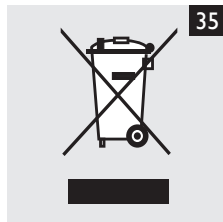
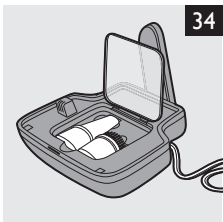
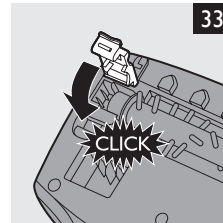
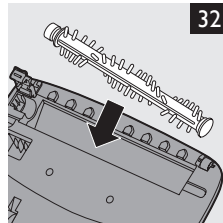
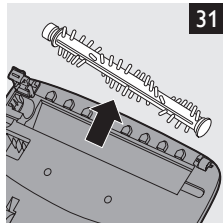
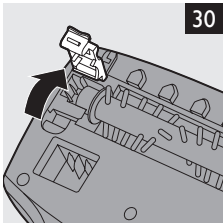
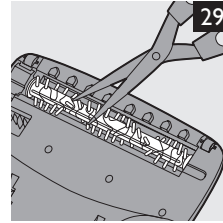
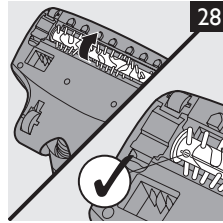
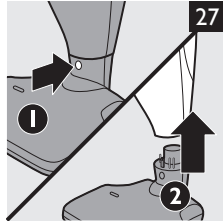
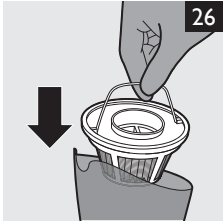
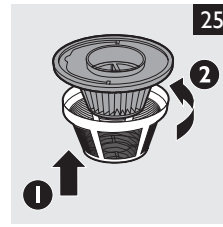
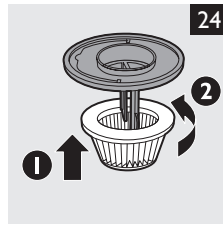
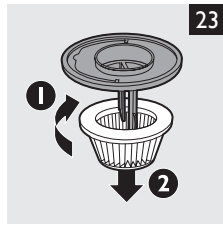
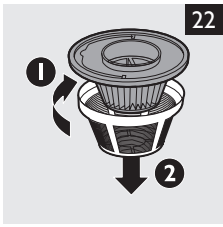
产品 : 飞利浦立式/手持二合一充电式吸尘器
型号 : FC6161
额定电压 : 220V~
额定频率 : 50Hz
额定输入功率 : 9W
生产日期 : 请见产品底部
产地 : 中国

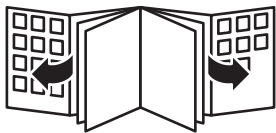


飞利浦电子香港有限公司
香港新界沙田香港科学园科技道东五号
全国顾客服务热线: 4008 800 008

本产品根据国标 GB4706.1-2005, GB4706.7-2004,
GB4343.1-2009及GB17625.1-2003制造

请妥善保管本使用说明书
发行日期: 2011/03/14







www.philips.com

 100% recycled paper
100% 循环再造纸

4222.003.3548.3