



View Quest

Retro Mini

Operation Guide



Guide d'utilisation
Betriebsanleitung

Guía de funcionamiento
Guia de Operação

Gebruiksaanwijzing
Bruksanvisning






View Quest
Sound & Style

Welcome To View Quest

View Quest is a unique British brand inspired by the fusion of Sound and Style.

At View Quest we believe that colour and design is an important part of who we are, so why should the technology we buy only be Black or Silver and lacking individuality of design?

Our award winning acoustic development programme ensures all our products feature the latest technology and unbeaten sound quality. Couple this with our passion for the creative world of: the arts, fashion & interior design and this means our products don't just sound great, they look great too.

So thank you for joining the View Quest Revolution with our award winning technology that's designed to match your style.

We encourage you to fall in love with View Quest and your new Retro Mini.



Jonathan Merricks
CEO & Creative Director



Daniel Copley
Product Designer

Bardot

DAB/DAB+ • FM • Bluetooth



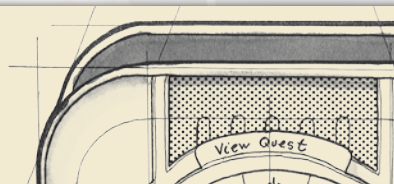
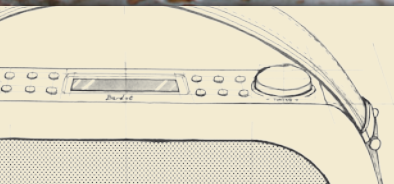
Christie

DAB/DAB+ • FM • Bluetooth



An Iconic design which embodies our Sound & Style mission
DAB / DAB+ / FM Radio Reception
Bluetooth Connectivity
Award winning British Speaker Technology

Classic design, modern functionality
DAB / DAB+ / FM Radio Reception
Bluetooth & NFC Connectivity
Optional Rechargeable Battery Pack & Carry Case



Retro

DAB/DAB+ • FM • Apple Dock



Hepburn

DAB/DAB+ • FM • Bluetooth



Our classic, with retro style and modern function
DAB / DAB+ / FM Radio Reception
Apple docking for 30-pin or Lightning connector devices



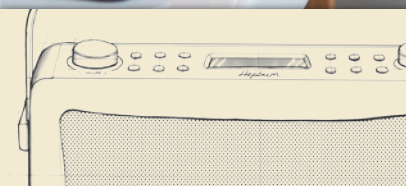
iCreate
★★★★

Macworld
★★★★

Vintage style with modern functionality
DAB / DAB+ / FM Radio Reception
Bluetooth Connectivity



Macworld
★★★★



The View Quest Colour Range

BLACK

BROWN

CREAM

RED

MUSTARD

EMERALD

TEAL

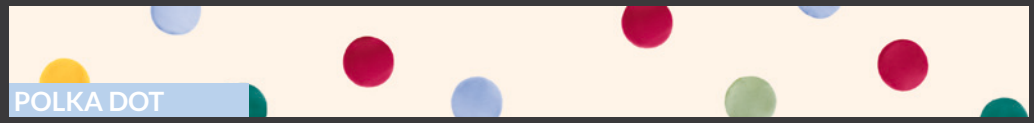
BLUE

RADIANT ORCHID

HOT PINK

PURPLE

Emma Bridgewater Pattern Range 2014/15



POLKA DOT



BLUE DAISY



LOVE SAMPLER



ROSE & BEE



PINK WALLPAPER



BLACK TOAST



MARMALADE



Retro Mini

RETRO STYLE | MINI DESIGN | MODERN SOUNDS

Contents

- Welcome to View Quest 3
- If You Love Retro Mini... You'll Love... 4
- The Benefits of Digital Radio 12
- Your VQ Retro Mini - Born in Britain 13
- Finding Your Way Round Your VQ Retro Mini 14

- What Can My VQ Retro Mini Do? 17
 - Overview 17
 - DAB/DAB+ Radio Reception 17
 - FM Radio Reception 17
 - Bluetooth 17
 - Auxiliary Connections 18
 - MyEQ 18
 - VQ Lifestyle Alarm 18

- Turn on, Tune in and Enjoy Retro Mini Sound & Style 20
 - Positioning 20
 - Preparing 20
 - Switching On 20
 - DAB/DAB+ 21
 - FM 22
 - Bluetooth 23
 - Auxiliary Connections 25
 - MyEQ 25
 - VQ Lifestyle Alarm 27
 - Sleep Timer 28
 - Other Functions 29

- Important Safety & Environmental Information 30
- Specification 33
- Support 34

The Benefits of Digital Radio

When you upgrade to digital radio you get more choice than ever before – with your existing favourite stations just waiting to be experienced in digital quality but also a plethora of new digital-only stations featuring all kinds of; music, chat and programming you'll love.

Digital radio is not just about choice, it's about quality – with digital broadcasts you'll hear everything in crystal clear clarity.

If you have any concerns about the digital coverage in your area – you can check your signal on the UK Digital Radio website, it's completely free and totally impartial – www.ukdigitalradio.com

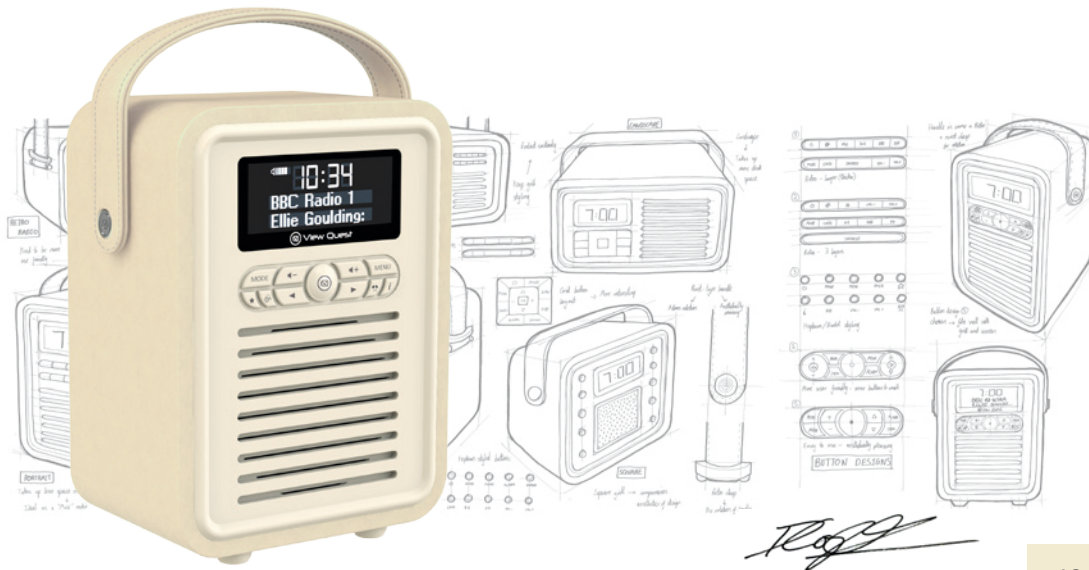


Your VQ Retro Mini - Born In Britain

You can be proud of your Retro Mini and rely on its quality as it's designed and engineered in Britain featuring British acoustic development.

At View Quest we're proud to be British and we're proud to take our inspiration from quintessential British areas of excellence - Design, Fashion, Music and The Arts.

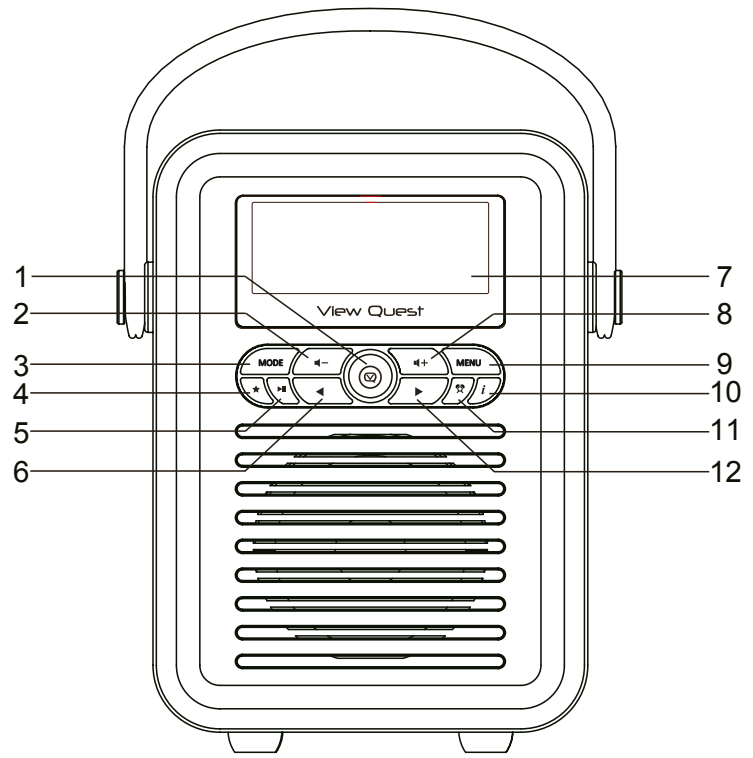
It's our aim to take these inspirations and create our own unique sense of Sound & Style – but also to share these influences with you to inspire your own sense of style.



Finding Your Way Around Your Retro Mini

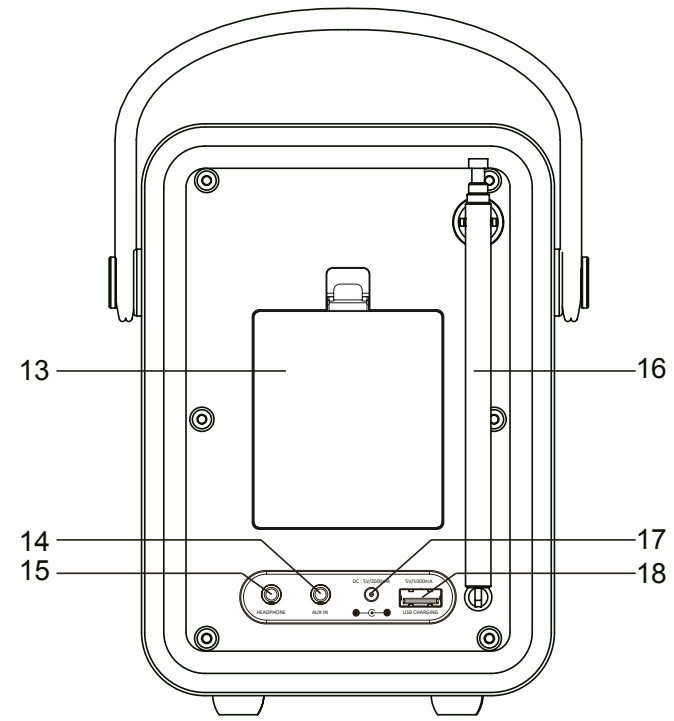
Front View

1. Centre button
2. Vol- button
3. MODE button
4. FAVOURITE button
5. Play/Pause button
6. Left button
7. LCD display
8. Vol+ button
9. MENU button
10. INFO button
11. Alarm button
12. Right button



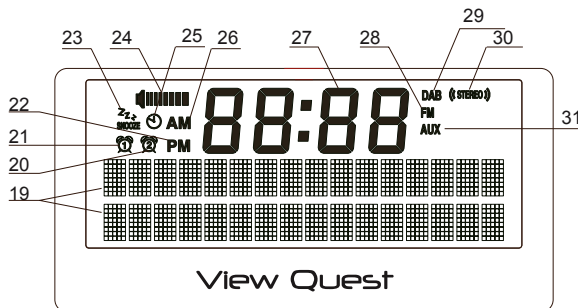
Back View

13. Battery Compartment
14. AUX IN socket
15. Headphone socket
16. Telescope Antenna
17. 5V/2A DC IN socket
18. 5V/1A USB charge out socket



LCD DISPLAY

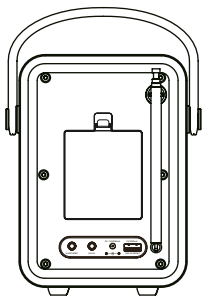
- | | |
|---------------------|----------------------|
| 19. 2x16 dot matrix | 25. Sleep icon |
| 20. Alarm 2 icon | 26. AM icon |
| 21. Alarm 1 icon | 27. Clock icon |
| 22. PM icon | 28. FM mode icon |
| 23. Snooze icon | 29. DAB mode icon |
| 24. Volume bar | 30. STEREO icon |
| | 31. AUX in mode icon |

**Battery Use**

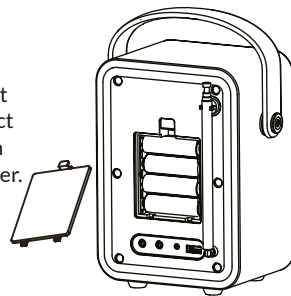
Your Retro Mini can be powered by 4 x Type 'AA' batteries.

Battery Removal

1. Use the thumb or finger to pull clip down and outward in order to release battery cover.



2. Be sure to insert batteries of the correct type and ensure correct polarity (+/-). And then secure the battery cover.



NOTE: If you're not powering your Retro Mini with batteries we recommend you remove them.

What Can My VQ Retro Mini Do?**Overview**

- DAB / DAB+ / FM Radio Reception
- Bluetooth Connectivity
- 3.5mm Aux-in Connection
- 3.5mm Headphone Connection
- USB Charging (For External Devices)
- MyEQ
- VQ LifeStyle Alarm – dual alarm & sleep timer
- Mains or Battery Power

**DAB/DAB+ Radio Reception**

DAB / DAB+ (Digital Radio) brings a superior listening experience whether it's music, chat or any other programming. Your Retro Mini features DAB and DAB+ the two standards in digital broadcasting which means you can listening to digital radio all across Europe. And when you find a station you love save it as one of your 30 preset favourites.

FM Radio Reception

Just in case you find yourself without Digital Coverage we make sure you can keep listening to the radio with FM reception, and you can save your favourite stations to the 30 presets.

Bluetooth

When it's time for your own music simply connect by Bluetooth and you can enjoy all the music you've got on any of your smart devices – whether it's stored on your device or being streamed through services such as Spotify or Tunes it all sounds great on your Retro Mini.

Auxiliary Connections

3.5mm Aux-in Connection:

If you don't have a smart device or would rather not use Bluetooth but still want to listen to your own music, it's no problem with Retro Mini, simply connect via the 3.5 Aux-in cable connection.

3.5mm Headphone Connection:

Past your bedtime and time to hide under the covers with your favourite tunes – just plug in your headphones and no one will know.

USB Charging:

Your Retro Mini is a very useful companion as you can charge smart devices from the USB connection – perfect for a bedside table, in the office or just anywhere you need a little power boost.

MyEQ

The MyEQ function on Retro Mini gives a range of specially tailored presets controlling bass and treble because it's your sound, so it should be perfect for what you're listening to, where you're listening and when you're listening.

VQ Lifestyle Alarm

The dual alarms and sleep timer make Retro Mini the perfect bedside companion, his & hers or week & weekend - set the alarm or countdown for whenever you need it.



Retro Mini
TECHNICAL SPECIFICATIONS

Turn On, Tune In and Enjoy Retro Mini Sound & Style

Positioning

A good place for your Retro Mini:

- has a flat and stable surface with sufficient ventilation
- is within 1.4metres of a power socket if you are using mains power.
- has space above it for you to fully extend the telescopic aerial vertically.
- is away from bright sunlight, heat sources, humidity and dampness.

Preparing

- If using mains power: connect the mains power lead into the socket on the back of the radio (DC IN). Switch the mains power wall socket off. Now plug the power adaptor into the wall socket, and switch the wall socket on.
- If not using mains power, ensure new batteries are correctly fitted. Your Retro Mini can be powered by four type 'AA' alkaline or rechargeable batteries (not supplied). When using batteries to power the unit, function and operation are the same as using the mains, except that in standby mode, the LCD will shut down and can not charge out for any device .
- If operating on batteries, please switch of the mains adaptor and remove the mains power plug from the back of the radio.
- Fully extend the radio aerial vertically for the best reception.

Switching on

- When switching on the unit, press and hold the Centre button.
- What you will see when you switch on:
- "View Quest" will be displayed for 2 seconds, followed by the clock. This is 'standby' mode.
- After 10 seconds the display backlight will switch off.

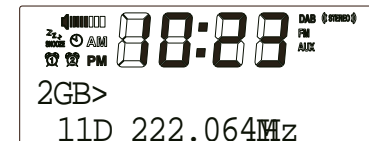
Leaving and entering standby mode

- Press and hold Centre button to switch between working and standby mode. In standby mode the display shows a clock and date, in working mode the display shows information about the current function.

The Specific Functions of Your Retro Mini

DAB/DAB+

1. For best reception, make sure the aerial is fully extended vertically.
2. To switch to DAB/DAB+, press MODE button repeatedly until the display shows DAB.
 - a. First time use, or after Factory Reset : Your Retro Mini will automatically begin to quick scan for DAB/DAB+ stations. A progress bar will show the progress of the scan, and multiplex information is shown. Stations found will be automatically stored. The number of stations found will also be displayed at the upper right corner of the display. The first station available will be shown on the display and played automatically.
If no DAB/DAB+ signal is detected, "No Signal" will be displayed.
 - b. Subsequent use: Your last selected station will be displayed, tuned and played if possible. The display will show the Station Name on the top line of 2X16 matrix, and the Programme Type, if available, on the second line.



3. Press the Left and Right button to browse the stations. Press Centre button to confirm the stations you want to listen to.
4. To full scan or manually tune for stations
If you want to perform full scan or manual scan for your desired stations, press MENU button to select Full Scan or Manual Scan. Using Left and Right button to select and confirm by the Centre button.
5. Press Play/Pause button if you want to mute the DAB radio.
6. Press INFO button, the scrolling information of the station will be displayed according to the following sequence DYNAMIC LABEL SEGMENT (DLS), PROGRAM TYPE, ENSEMBLE NAME, SIGNAL STRENGTH, CURRENT TIME, ENSEMBLE FREQ, TRANSFER RATE. The information type you select will then be displayed for the current DAB/DAB+ station.

FM

1. For best reception, make sure the aerial is fully extended vertically.
2. To switch to FM, press MODE button repeatedly until the display shows FM.
 - a. First time use, or after Factory Reset: Your Retro Mini will tune to and display 87.50MHz, the lowest point of the FM spectrum.
 - b. Subsequent use: Your last selected station will be displayed, tuned and played if possible.



3. If you would like to perform manual scanning, you can press Left and Right button to fine tune the station by 0.05Hz step, or you can press and hold the Left and Right button to scan next or previous available stations.
4. Press Play/Pause button if you want to mute the FM radio.
5. Press INFO button to scroll the station info from below accordingly can include RADIO TEXT, PROGRAM TYPE, SIGNAL STRENGTH, CURRENT TIME, FM FREQ, STEREO MONO. The information type you select will be displayed for the current FM station.

Storing and Selecting Favourite Stations

The Retro Mini can store up to 30 stations DAB radio and 30 stations FM radio stations. Follow the steps below to store and select your favourite stations

To store a Favourite station:

1. Tune to the DAB or FM radio station you want to store.
2. Press and hold the FAVOURITE button to setup the favourite list. Using Left and Right button to navigate the number you want to store.
3. Press Centre button to confirm your selection

To recall a Favourite station when listening to DAB or FM radio

1. To tune to the favourites, press FAVOURITE button to access.
2. Press Left and Right button to navigate your desired favourite station and press Centre button to confirm.



Bluetooth

If your phone, tablet or any Bluetooth devices is capable of storing audio files, you can use Bluetooth to stream any music stored in your Bluetooth devices to Retro Mini.

1. To switch to BLUETOOTH press MODE button repeatedly until the display shows Bluetooth.



2. Enable Bluetooth on your device.

3. On your device, select an option to add a new Bluetooth device.

NOTE: Adding a Bluetooth Device varies on different smart devices, if in doubt please refer to your device manufacturers manual.

4. Start the pairing on your device. Do this by selecting "Retro Mini" from the list of available devices shown on your device. This will connect automatically and once paired, your Retro Mini display will show "Connected".

NOTE: The auto pairing will search for 1 minute for available device. If nothing is paired, the display will show "NO CONNECTION".

5. To reconnect or disconnect from Retro Mini, press and hold the MODE button until a "Beep" sound is heard.

NOTE: You will need to disconnect any connected Bluetooth devices from Retro Mini to stream from a different Bluetooth device.

NOTE: Bluetooth will automatically disconnect if you are out of the range of the Retro Mini.

Controlling Bluetooth music playback

You can control the music in Retro Mini to your Bluetooth device wirelessly.

1. Press Play/Pause button to play or pause the music playback.

2. Press Left and Right button to skip track or press and hold to rewind and forward.

3. Press the Vol+ and Vol - button to adjust the volume level.

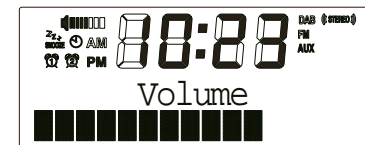
NOTE: You can do vice versa, press the same type of buttons in your Bluetooth device to control the music playback function wirelessly.

Auxiliary Connections

AUX-IN

1. To connect the auxiliary device: plug the aux-in cable into the 3.5mm AUX-IN jack at the back of the radio.

2. To switch to AUX IN, press MODE button repeatedly until the display shows AUX.



3. To control the playback of the auxiliary device you need to use the device's own controls. You may need to adjust volume on your Retro Mini and the auxiliary device for optimum volume and clarity.

4. Press Play/Pause button if you want to mute the music playback

Using the Headphone Jack

You can enjoy your personal music via the headphone jack. Simply plug your headphone to the headphone jack at the back of the unit.

MyEQ

Tailor your audio experience to what you're listening to with the MyEQ function.

1. Press the Menu button to enter into the menu list.

2. Press Left and Right button to choose "EQ Setup", press the Centre button to confirm your selection.

3. Press Left and Right button to select our preset EQ: Flat / Rock / Pop / Jazz / Classical / Bass

4. Press Centre button to confirm the selection

Setting the Clock, Alarm, Count Down Timer and Sleep Timer

Note: The clock, alarm, count down timer and sleep timer function does not work when Retro Mini is being powered by the AA batteries.

Setting the clock

The time and date on Retro Mini is automatically set by the DAB or FM radio signal. If the time/date does not update automatically, you can manually set it by using this option.

Note: Any time or date updates received by DAB or FM broadcast will override manual settings, if clock synchronisation is selected. Please refer below instructions for more information.

Setting the time and date manually

1. Press the Menu button, and press Left and Right button to choose "Clock Setup", and then press Centre button to confirm.
2. Press Left and Right to scroll to "Time Setup". Press Centre button to confirm.
3. Press Left and Right to scroll to "Manual". Press Centre button to confirm.
4. Press Left and Right button repeatedly to adjust the year and then press Centre button to next setting.
5. Repeat the action as step 4 to set Month/Date/HOUR/MIN. Press Centre button to confirm the choice you selected.

Clock synchronisation options

1. Press Menu button and press the Left and Right button to choose "Clock Setup", press Centre button to confirm. Press Left and Right to scroll to "Time Setup". Press Centre button to confirm.

2. Press Left and Right button to choose Radio/Manual. Press Centre button to confirm your selection

Note: Radio means clock synchronisation automatically via the radio broadcasting signal. Any manual setting will be override when Radio is chosen.

Note: Manual means clock will not be synchronised. The clock will only be set manually.

Set the time 12/24 hour

1. Press Menu button, and press Left and Right button to choose "12/24 hour", and then press Centre button to confirm.
2. Press Left and Right to choose 12 or 24 hour. Press Centre button to confirm.

Setting the VQ Lifestyle alarm

The alarm in Retro Mini switches the radio on (if in standby) and tunes to a DAB or FM radio station or sounds a tone.

1. Press the Alarm button to enter into Alarm setup Menu.
2. Press Alarm button to choose the Alarm 1 or Alarm 2.
3. Press Left and Right button to the next Alarm setting to turn the alarm on and off. Press Centre button to confirm and go to the next level.
4. In alarm time setting, using Left and Right to adjust the hh. Press Centre to confirm and to set the mm. Press Centre button to confirm again.
5. Finally choose how you would like to wake up. Using Left and Right to select your alarm tone, you can have Beep1/Beep2/DAB/FM. Press Centre button to confirm your selection and exist.
6. The alarm icon will appear on the display to show that the alarm is set.

Snoozing a sounding alarm

To snooze a sounding alarm, press Centre button to snooze. The alarm will sound again in 10 minutes

NOTE: The alarm will automatically stop after 60mins if Centre button is not pressed to snooze.

Cancelling a sounding alarm

To cancel a sounding tone alarm, press ALARM button once to stop.

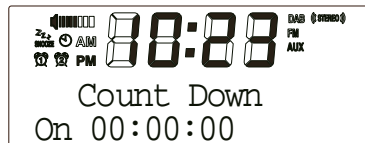


Disabling an alarm

1. Press Alarm button when alarm is not sounding. Enter into the alarm setting menu
2. Press Left and Right button to select Alarm On/Off menu.
3. Press Centre button to confirm your selection.

Setting the Count Down Timer

1. Press and hold the Alarm button to enter into the setup menu. Press Left and Right button to switch the timer ON/OFF, and then press Centre button to confirm the selection.



2. HH:MM:SS is displayed. Press Left and Right button to adjust the HH, press Centre button to confirm. Repeat the instruction to set the MM and SS setting. Press the Centre button to start.
3. When the timer sounds, press CENTRE button to cancel the timer.

Note: If the alarm is snoozed, the countdown timer is also set to buzz during the same time, the countdown timer will be disabled.

Setting the Sleep Timer

The Sleep Timer can be set to switch Retro Mini off after a period of time.

1. Press Menu button to enter into the menu list.
2. Press Left and Right button to choose "Sleep", press Centre button to confirm your selection.
3. Press Left and Right button to set the timer for up to 90 minutes or choose Sleep off to cancel.
4. The sleep timer icon will appear on the display to show that the sleep timer is set.

Other Functions

Backlight Setting

You can adjust the backlight during power on.

1. Press Menu button to enter into the menu list.
2. Press Left and Right button to choose "Backlight", press Centre button to confirm your selection.
3. Press Left and Right button to choose Lo/Mid/Hi backlight level.
4. Press Centre button to confirm the selection.

Changing the language

1. Press Menu button to enter into the menu list.
2. Press Left and Right button to choose "Language", press Centre button to confirm your selection.
3. Press Left and Right button to select a menu language from English, French, German and Dutch.
4. Press Centre button to confirm the selection.

WARNING:

Factory Reset

Resetting your Retro Mini removes all favourites, stored stations, alarms and resets all other options to the default settings.

1. Press Menu button to enter into the menu list.
2. Press Left and Right button to choose "Reset", press Centre button to confirm your selection.
3. Press Left and Right button to choose YES or NO, press Centre button to confirm your selection.
4. When you confirm YES, the Retro Mini will be reset to the factory default.

Important Safety Information – please read

Please read this guide before using your unit – it contains guidance and recommendations that can help ensure long-lasting, trouble-free, safe operation. Please keep this guide for future reference.

Be careful. Avoid:

- Liquids: don't expose your unit to drips or splashes, and don't put liquid containers like vases on it or near it.
- Humidity or moisture: humid or moist places like outdoors, bathrooms and steam rooms need specially-designed equipment.
- Heat: don't expose your unit to direct sunlight or heat from radiators or other heat sources. Audio/video devices can generate a lot of heat; don't put your unit on top of such devices. Don't use naked flames anywhere near your unit.
- Dust and restricted airflow: make sure your unit is in free-flowing air to avoid overheating.
- Vibration: constant vibration can cause damage.
- Extreme climates: this unit is designed for operation in moderate climates.

IMPORTANT:

- **DO NOT** listen at high volume: High volumes can permanently damage hearing.
- **DO NOT** Use equipment, especially headphones, when it could distract you from activities that require attention to safety.
- **DO NOT** Use equipment that is not working normally or you suspect may be faulty or damaged.
- **DO NOT** leave equipment switched on when it is unattended unless it is specifically stated that it is designed for unattended operation. Switch off using the switch on the equipment and make sure that your family knows how to do this. Special arrangements may need to be made for infirm or handicapped people.

Always:

- Operate all controls as instructed in the manual.
- Ensure that all electrical connections (including the mains plug, extension leads and inter-connections between the pieces of equipment) are properly made and in accordance with the manufacturer's



CAUTION

TO REDUCE THE RISK OF ELECTRIC SHOCK DO NOT REMOVE COVER (OR BACK), NO USER SERVICEABLE PARTS INSIDE, REFER SERVICING TO QUALIFIED SERVICE PERSONNEL.



DANGEROUS VOLTAGE

risk of electric shock to persons is present within this product's enclosure.



ATTENTION

This manual contains important operating and maintenance instructions, for your safety, it is necessary to refer to the manual.

WARNING

TO PREVENT FIRE OR SHOCK HAZARD, DO NOT EXPOSE THIS APPLIANCE TO DRIPPING OR SPLASHING.

Note: This unit will become warm when used for a long period of time. This is normal and does not indicate a problem with the unit.

Battery safety guidelines

- Be sure to insert batteries of the correct type and ensure correct polarity (+/-).
- To insert batteries, remove the battery compartment cover and insert batteries observing polarity.
- Ensure the cover is secure and remove batteries in a safe manner without the use of metallic or other conductive objects.
- Batteries should not be replaced by children.
- Never dispose of batteries in fire as they may explode.
- Batteries should not be exposed to excessive heat such as sunshine, fire or a naked flame.
- Only use batteries of the same type.
- Do not mix old and new batteries and do not mix alkaline and rechargeable batteries.
- Do not attempt to charge non-rechargeable batteries.
- If the radio is not going to be used for a long period of time, remove the batteries.
- Always remove spent batteries from the battery compartment and dispose of them responsibly to protect the environment.

Note: For battery operation, please switch off the mains adaptor and remove the mains power plug from the back of the radio.

Environmental Disposal Information

Electrical and electronic products displaying the crossed out wheeled bin symbol above must not be disposed of in general household waste. Take the product to a recycling facility that accepts electrical and electronic products. Check with your Local Authority for your nearest recycling centre.



For further details, please contact:

View Quest
9-10 Mill Lane
Alton
Hampshire
GU 34 2QG
support@viewquest.co.uk

Specification

1. Mode: DAB/DAB+ (BAND III 5A-13F), FM (87.5MHz-108MHz), BLUETOOTH, AUX_IN
2. LCD: 2x16 dots matrix; black background white fonts, negative LCD
3. Power Supply: DC 5V/2A, DC OUTPUT 5V/1A (USB SOCKET)
4. Battery requirement: 4 xAA type (not included)
5. Output Power: 5W
6. STANDBY MODE: Show Clock (Only in DC IN mode)
7. Dimensions: 224mm x 147mm x 105mm



Support

We're sure you're going to have a long and happy relationship with your new Retro Mini. How can we be so sure, well, we've designed, engineered and loved this product from the pages of a concept book through to the gorgeous product you have in your hands. We're very proud of our products and the care and attention we give them, this is reflected in our fantastically low returns rate.

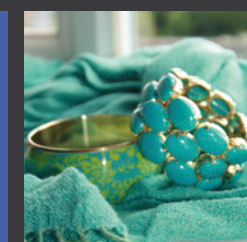
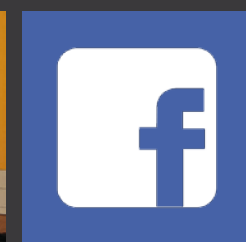
However, if you do have a problem then we're always happy to help:



+44 (0)1792 704 452



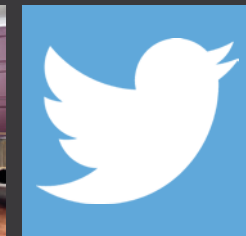
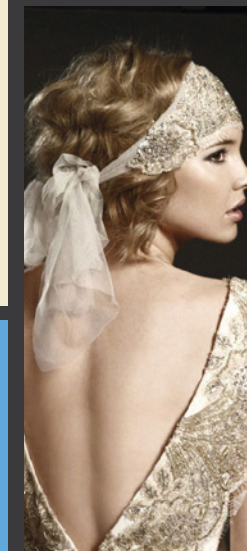
Support@viewquest.co.uk



If You Love Your Retro Mini Let The World Know

We take great pride in all our products and we hope you love your Retro Mini, if you do we'd love to hear about it. So why not share your experience and your own sense of sound & style with us via social media or reviews with our retailers.

#SoundStyle



SHOW US YOUR

Sound & Style

#SoundStyle

 /ViewQuest

 @View_Quest

 @ViewQuest

 /ViewQuest



www.viewquest.co.uk



+44 (0)1792 704 452



Support@viewquest.co.uk