

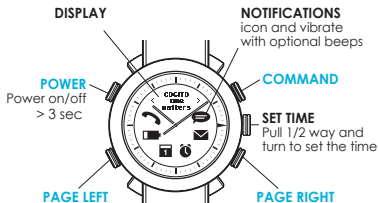


**COGITO**<sup>TM</sup>  
CLASSIC

Scan to download the App:



# Quick Start Guide



## DISPLAY

Tap PAGE LEFT or PAGE RIGHT to view additional information from display. Tap PAGE LEFT and PAGE RIGHT together to see the time. Display supports Latin characters only.

## LIGHT

Tap upper left (POWER) button once.

## PAIRING

When the watch is OFF, press POWER & COMMAND buttons until 1st beep (approx. 3 sec) and all icons will blink every 2 sec.


## SOFT RESET

Press the 4 buttons together for 3 sec until you see all ALERT icons blinking and the watch turns off.

## NOTIFICATIONS

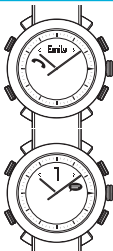
### Incoming Call, Missed Call notifications

Caller ID will be displayed during incoming calls. Phone numbers will be displayed if it has not been stored as contact in your phone book.

 Caller ID supports Latin characters only.

### TEXT and social media app alerts

Supports SMS, MMS and social media posts on Facebook and message notification from Skype, Line, WhatsApp, WeChat, Instagram and more...



## Incoming email alerts

number of alerts



## Calendar and Reminder alerts

Alerts you when there are upcoming events or reminders.



## Low or Critical battery alerts

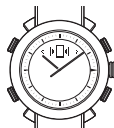
The display shows the battery percentage and the Low or Critical battery icons.

actual  
percentage of  
phone battery



## To find the COGITO watch

The watch beeps and blinks when tapping the  "find my watch" icon in the Connected Watch App.



## To find your phone


### For iOS7 users:

Your device beeps when tapping the COMMAND button. Please refer to the settings in the Connected Watch App.

### For Android users:

Press COMMAND and PAGE RIGHT buttons together and your device beeps.

## To activate out of range notification

After tapping the out of range icon , the watch beeps and blinks when your phone and watch are apart from each other. Range for the Bluetooth is about 10-20 meter, distance are varies based on the devices and environment.

## Step 1: Download the Connected Watch App

### For iOS users:

Search for the “Connected Watch” App in the App Store.

Compatible with iOS 7 devices that support Bluetooth® Smart technology such as the iPhone 5s, iPhone 5c, iPhone 5, iPhone 4s, iPad mini, iPad (3rd and 4th generation), and iPod touch (5th generation).

### For Android users:

Download the “Connected Watch” App from Google Play.

The app is available for selected Android 4.3 and Android 4.4 devices that support Bluetooth® Smart technology. Currently compatible with Samsung Galaxy S3, S4, S4 Mini, S4 Active, Note 2, Note 3, HTC One and Nexus 5, etc.

Visit [www.cogitowatch.com](http://www.cogitowatch.com) for the latest compatibility list. Contact [support@cogitowatch.com](mailto:support@cogitowatch.com) if Google Play is not supported in your country.

## Step 2: Pair and connect the COGITO watch with your mobile phone or tablet

1. Set the watch into PAIRING mode by pressing together the POWER & COMMAND buttons until 1st beep (approx. 3 sec) and all icons will blink every 2 sec.

### 2. For iOS7 users:

Open your device Bluetooth settings and select “COGITO” in the device list. Press “PAIR” when prompted.

### For Android users:

Open the Connected Watch App and tap the Device List icon at the bottom left. The app will search for your watch accordingly. Select “COGITO” in the device list and connect.

## Step 3: Customize your notifications settings.

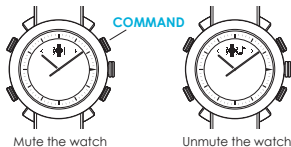
Tap the Notifications Settings icon at the top right of the Connected Watch App (iOS7 and Android) and select which notifications you wish to receive on your COGITO watch.

### To acknowledge a notification:

Press the COMMAND button or check the notification on your mobile phone or tablet.

### To mute/unmute your watch:

Press the COMMAND button for 5 sec to mute the watch. Press another 5 sec to unmute the watch and you will hear a beep sound.



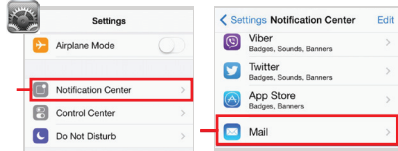
## To take photos using your COGITO watch:

Tap the Camera icon  in the Connected Watch App. This will trigger the camera interface of the app. Press the COMMAND button to take photos remotely.

## Enable the email notifications on your iOS notification center

For iOS device user: if you want to receive email notifications

**Step 1 :** Go to iOS “Settings”, and **Step 2 :** Tap “Mail” to configure tap “Notification Center” the settings.



**Step 3:** Select the alert style, sound etc. Then, enable “Show in Notification Center” to allow your device to communicate with your watch.

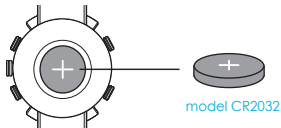
Show in Notification Center 

\*Now you are ready to enjoy the connected experience with the Connected Watch App. If you are having trouble with other app notification, please check the iOS notification center by following this 3 steps.

## Replacing the connected system battery:

Battery cover  
(Open to insert /  
replace the battery)

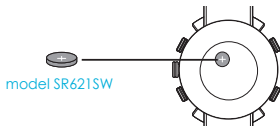




model CR2032

1. Open the back case of the watch to remove the old battery.
2. Replace with a new battery.
3. Carefully replace the back case of the watch, ensuring that the o-ring is correctly seated (for a water tight seal).

#### Replacing the watch movement battery:



model SR621SW

1. Open the back case of the watch and remove the CR2032 cell button battery.
2. Remove the protective sticker and carefully set it aside.
3. Remove analog system battery located beneath the protected sticker. (model SR621SW, battery life up to 3 years\*\*)
4. Carefully put back the protective sticker.
5. Insert the CR2032 battery and carefully replace the back case of the watch ensuring that the o-ring is correctly seated (for a water tight seal).

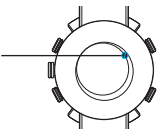
\*\* Battery life may vary depending on the volume of notification, brand and condition of the battery.

Caution advised by certification: Danger of explosion if the battery is incorrectly replaced. Replace only with the same or equivalent type.

#### Hard reset

If your watch gets into unrecoverable state, a hard reset might be necessary.

1. Open the back case of the watch and remove the battery.
2. Replace the battery.
3. Apply a hard reset by touching the metal parts for a second.
4. Carefully replace the backcase of the watch, ensuring that the o-ring is correctly seated (for a water tight seal).



#### One year limited warranty

Register your product by setting-up a CONNECTEDEVICE account in the Connected Watch App. Keep your original receipt as proof of purchase.

To keep your watch in good condition and to avoid voiding the warranty:

- Do not expose the watch to excessive pressure, impact, dust, open flames or extreme temperatures.
- Operating temperature: -20 to +55C. (-4 to +131F)
- Always ensure the back case and o-ring is correctly in place and the watch is tightly sealed before exposing the watch to any moisture or liquid.
- Do not attempt to repair or modify the watch yourself. Service and maintenance should be performed by authorized technicians.
- 10 ATM/100 M of water resistance means that your watch can be worn for most indoor or outdoor activities, including most water sports. Suitable for recreational surfing, swimming, snorkeling, sailing and water sports. NOT suitable for diving.
- Avoid submerging the watch for an extended period of time.
- To maintain water resistance, do not press any buttons or pull out the crown while under water.
- Keep the front glass away from sharp or hard objects to prevent scratches.
- Exposure to high or low temperatures or frequent successive alerts may shorten battery life.
- Keep the watch, accessories and any small parts out of the reach of children.

For support, please email us at  
[support@cogitowatch.com](mailto:support@cogitowatch.com)

**COGITO**<sup>TM</sup>  
 CLASSIC

For more information about the watch and  
 Connected Watch App, visit [cogitowatch.com](http://cogitowatch.com)

Thank you for supporting COGITO<sup>TM</sup>

## **FCC/ Industry Canada Notice**

This device complies with Part 15 of the FCC rules. Operation is subject to the following two conditions: (1) This device may not cause harmful interference. (2) This device must accept any interference received, including interference that may cause undesired operation.

Caution: Changes or modifications to this Bluetooth® device not expressly approved by the party responsible for compliance could void the user's authority to operate it.

## **Certification and Safety approvals**

This product is CE marked according to the provisions of the R&TTE Directive (99/5/EC). We declare that this product is in compliance with the essential requirements and other relevant provisions of Directive 1999/5/EC. For further information, please refer to website.

Bluetooth® is a trademark owned by Bluetooth SIG, Inc. and is used by the manufacturer under license.

## **IC Statement**

This device complies with Industry Canada licence-exempt RSS standard(s). Operation is subject to the following two conditions: (1) this device may not cause interference, and (2) this device must accept any interference, including interference that may cause undesired operation of the device.

Le présent appareil est conforme aux CNR d'Industrie Canada applicables aux appareils radio exempts de licence. L'exploitation est autorisée aux deux conditions suivantes: (1) l'appareil ne doit pas produire de brouillage, et (2) l'utilisateur de l'appareil doit accepter tout brouillage radioélectrique subi, même si le brouillage est susceptible d'en compromettre le fonctionnement.

## **NCC**

本產品符合低功率電波輻射性電機管理辦法 第十二條、第十四條等條文規定:

1. 經型式認證合格之低功率射頻電機，非經許可，公司、商號或使用者均不得擅自變更頻率、加大功率或變更原設計之特性及功能。
2. 低功率射頻電機之使用不得影響飛航安全及干擾合法通信；經發現有干擾現象時，應立即停用，並改善至無干擾時方得繼續使用。前項合法通信，指依電信法規定作業之無線電通信。低功率射頻電機須忍受合法通信或工業、科學及醫療用電波輻射性電機設備之干擾。

Company name : CONNECTEDDEVICE Ltd -8/F, Tai Yip Building, 141 Thomson Rd, Wan Chai, HongKong

## **EN Note on environmental protection:**

After the implementation of the European Directive 2002/96/EU in the national legal system, the following applies: Electrical and electronic devices may not be disposed of with domestic waste. Consumers are obliged by law to return electrical and electronic devices at the end of their service lives to the public collecting points set up for this purpose or point of sale. Details to this are defined by the national law of the respective country. This symbol on the product, the instruction manual or the package indicates that a product is subject to these regulations. By recycling, reusing the materials or other forms of utilizing old devices, you are making an important contribution to protecting our environment.



## FR **Remarques concernant la protection de l'environnement:**

Conformément à la directive européenne 2002/96/CE et 2006/66/CE, et afin d'atteindre un certain nombre d'objectifs en matière de protection de l'environnement, les règles suivantes doivent être appliquées:

Les appareils électriques et électroniques ainsi que les batteries ne doivent pas être éliminés avec les déchets ménagers. Le pictogramme "picto" présent sur le produit, son manuel d'utilisation ou son emballage indique que le produit est soumis à cette réglementation. Le consommateur doit retourner le produit/la batterie usager aux points de collecte prévus à cet effet. Il peut aussi le remettre à un revendeur. En permettant enfin le recyclage des produits ainsi que les batteries, le consommateur contribuera à la protection de notre environnement. C'est un acte écologique.

## ES **Nota sobre la protección medioambiental:**

Después de la puesta en marcha de la directiva Europea 2002/96/EU y 2006/66/EU en el sistema legislativo nacional, se aplicara lo siguiente: Los aparatos eléctricos y electrónicos, así como las baterías, no se deben evacuar en la basura doméstica. El usuario está legalmente obligado a llevar los aparatos eléctricos y electrónicos, así como pilas y pilas recargables, al final de su vida útil a los puntos de recogida comunales o a devolverlos al lugar donde los adquirió. Los detalles quedaran definidos por la ley de cada país. El simbolo en el producto, en las instrucciones de uso o en el embalaje hace referencia a ello. Gracias al reciclaje, al reciclaje del material o a otras formas de reciclaje de aparatos/pilas usados, contribuye Usted de forma importante a la protección de nuestro medio ambiente.

## DE **Hinweis zum Umweltschutz:**

Ab dem Zeitpunkt der Umsetzung der europäischen Richtlinien 2002/96/EG und 2006/66/EG in nationales Recht gilt folgendes:

Elektrische und elektronische Geräte sowie Batterien dürfen nicht mit dem Hausmüll entsorgt werden. Der Verbraucher ist gesetzlich verpflichtet, elektrische und elektronische Geräte sowie Batterien am Ende ihrer Lebensdauer in den dafür eingerichteten, öffentlichen Sammelstellen oder an die Verkaufsstelle zurückzugeben. Einzelheiten dazu regelt das jeweilige Landesrecht. Das Symbol auf dem Produkt, der Gebrauchsanleitung oder der Verpackung weist auf diese Bestimmungen hin. Mit der Wiederverwertung, der stofflichen Verwertung oder anderen Formen der Verwertung von Altgeräten/Batterien leisten Sie einen wichtigen Beitrag zum Schutz unserer Umwelt.

## IT **Informazioni per protezione ambientale:**

Dopo l'implementazione della Direttiva Europea 2002/96/EU e 2006/66/EU nel sistema legale nazionale, ci sono le seguenti applicazioni: Le apparecchiature elettriche ed elettroniche e le batterie non devono essere smaltite con i rifiuti domestici. I consumatori sono obbligati dalla legge a restituire i dispositivi elettrici ed elettronici e le batterie alla fine della loro vita utile ai punti di raccolta pubblici preposti per questo scopo o nei punti vendita. Dettagli di quanto riportato sono definiti dalle leggi nazionali di ogni stato. Questo simbolo sul prodotto, sul manuale d'istruzioni o sull'imballo indicano che questo prodotto è soggetto a queste regole. Riciclando, ri-utilizzando i materiali o utilizzando sotto altra forma i vecchi prodotti/le batterie, darete un importante contributo alla protezione dell'ambiente.

## DU **Notitie aangaande de bescherming van het milieu:**

Ten gevolge van de invoering van de Europese Richtlijn 2002/96/EU en 2006/66/EU in het nationaal juridisch system, is het volgende van toepassing:

Elektrische en elektronische apparatuur, zoals batterijen mag niet met het huishuיל weggegooid worden. Consumenten zijn wettelijk verplicht om elektrische en elektronische apparaten zoals batterijen op het einde van gebruik in te dienen bij openbare verzamelplaatsen speciaal opgezet voor dit doeleinde of bij een verkooppunt. Verdere specificaties aangaande dit onderwerp zijn omschreven door de nationale wet van het betreffende land. Dit symbool op het product, de gebruiksaanwijzing of de verpakking duidt erop dat het product onderworpen is aan deze richtlijnen. Door te recycleren, hergebruiken van materialen of andere vormen van hergebruiken van oude toestellen/batterijen, levert u een grote bijdrage aan de bescherming van het milieu.

## Fin **Ympäristönsuojelua koskeva ohje:**

Siitä lähtien, kun Euroopan unionin direktiivi 2002/96/EU ja 2006/66/EU otetaan käyttöön kansallisessa lainsäädännössä, pätevät seuraavat määräykset:

Sähkö- ja elektroniikkalaitteita ja paristoja ei saa hävittää talousjätteen mukana. Kuluttajalla on lain mukaan velvollisuus toimittaa sähkö- ja elektroniikkalaitteet niiden käyttöön päätyttyä niille varattuihin julkisiin keräyspisteisiin tai palauttaa ne myyntipaikkaan. Tähän liittyvistä yksityiskohdista säädetään kulloisenkin osavaltion laissa. Näistä määräyksistä mainitaan myös tuotteen symbolissa, käyttöohjeissa tai pakkaussessa. Uudelleenkäytöllä, materiaalien/paristojen uudelleenkäytöllä tai muilla vanhojen laitteiden uudelleenkäyttövoilla on tärkeä vaikutus yhteisen ympäristömme suojelussa.



[cogitowatch.com](http://cogitowatch.com)

[support@cogitowatch.com](mailto:support@cogitowatch.com)

[facebook.com/cogitowatch](https://facebook.com/cogitowatch)



**cogitowatch.com**  
support@connectedevice.com

