



Register this product online  
within 3 weeks of purchase and  
get a free **10 year** warranty

[www.sitecom.com/warranty](http://www.sitecom.com/warranty)

# Installation guide

## PC or Mac



# Wi-Fi range extender N300

- UK Full manual available in English
- NL Volledige handleiding beschikbaar in het engels
- IT Il manuale utente completo è disponibile in lingua inglese
- DE Vollständiges Handbuch in englischer Sprache verfügbar
- ES Manual completo disponible en inglés
- PT Manual completo disponível em inglês
- FR Manuel complet disponible en anglais
- RU Подробное руководство доступно на английском языке



[www.sitecom.com/helpdesk](http://www.sitecom.com/helpdesk)

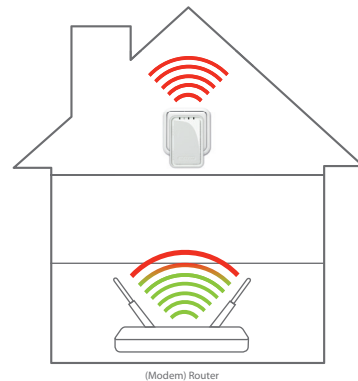
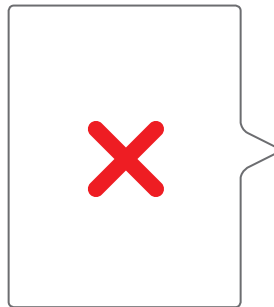
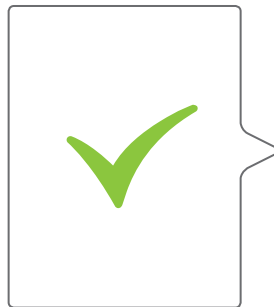
Have the network login details ready



1

## Positioning range extender

- NL Plaatsing van de Range Extender
- IT Posizionamento del Range Extender
- DE Range Extender aufstellen
- ES Posicionamiento del extensor de rango
- PT Posicionar o Range Extender
- FR Positionnement du Range Extender
- RU Расположение расширителя беспроводного диапазона



# 2

## Range extender configuration

- NL Configuratie van de Range Extender
- IT Configurazione del Range Extender
- DE Konfiguration des Range Extenders
- ES Configuración del extensor de rango
- PT Configuração do Range Extender
- FR Configuration du Range Extender
- RU Конфигурация расширителя беспроводного диапазона

Choose one of the **two** options:



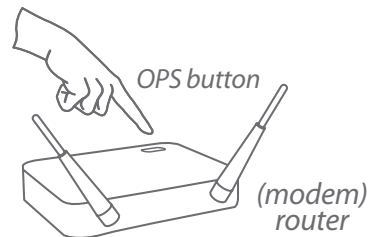
- NL Kies één van de twee opties:
- IT Scegli una delle due opzioni sequenti:
- DE Wählen Sie eine der beiden Optionen:
- ES Escoja una de las dos opciones:
- PT Escolha uma das duas opções:
- FR Choisissez une des 2 options:
- RU Выберите один из двух вариантов:

# Option 1: Range Extender configuration via push button

*In combination with a (Modem) Router with OPS/WPS*

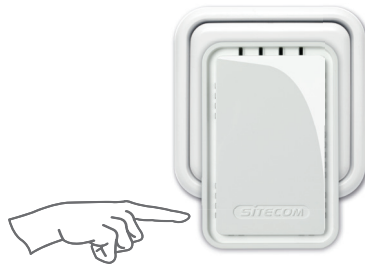
- NL Optie 1: Range Extender configuratie met een druk op de knop  
*In combinatie met een (Modem) Router met OPS/WPS*
- IT Opzione 1: Configurazione del Range Extender via push button  
*In combinazione con un (Modem) Router con OPS/WPS.*
- DE Option 1: Range Extender per Knopfdruck konfigurieren  
*In Verbindung mit einem (Modem) Router mit OPS/WPS*
- ES Opción 1: Configuración del Repetidor de Señal pulsando el botón  
*En combinación con un (Modem)Router con OPS/WPS*
- PT Opção 1: Configuração do Amplificador de Sinal através de botão de pressão  
*Em combinação com um Router (Modem) com OPS / WPS*
- FR Option 1: configuration commutateur par bouton  
*en combinaison avec un (modem) routeur équipé du ops / wps.*
- RU 1 Настройка Расширителя диапазона нажатием кнопки  
*сочетании с функцией OPS/WPS (модема) роутера*

## A



Push 2 seconds

## B



Push 2 seconds

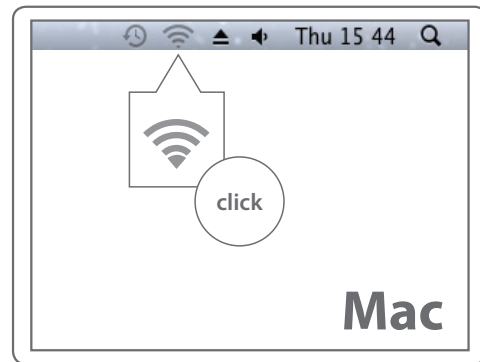
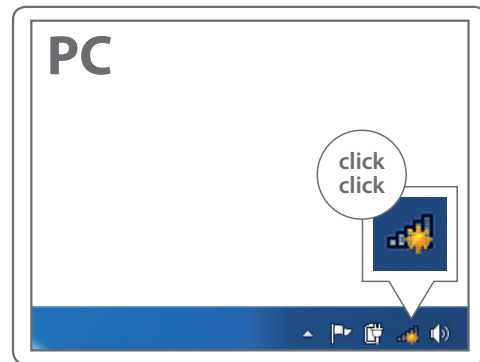
➔  
Go to step 3

# Option 2:

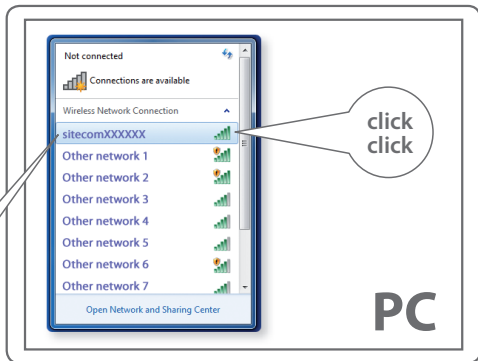
## Range Extender configuration via wizard

- NL Optie 2: Range Extender configuratie via wizard
- IT Opzione 2: Configurazione del Range Extender via wizard.
- DE Option 2: Range Extender mit Hilfe des Wizards konfigurieren
- ES Opción 2: Configuración del Repetidor de Señal con el asistente
- PT Opção 2: Configuração do Amplificador de Sinal via assistente/operador
- FR Option 2: configuration commutateur par set-up wizard
- RU 2 Настройка Расширителя диапазона через мастера настройки

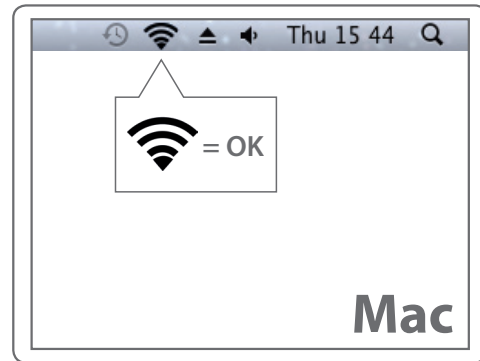
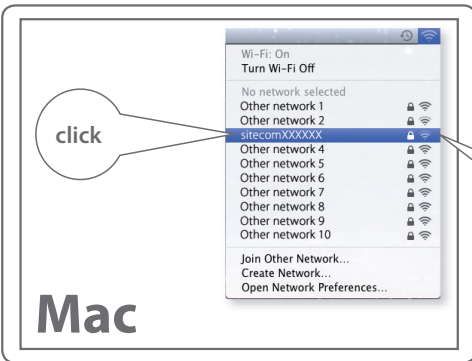
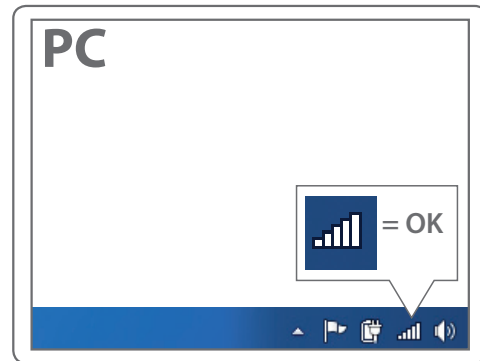
A



# B




# C



# D

type: `http://sitecom.extender`

 Open your browser

**PC**


# E

User name: **admin**  
Password: **admin**

click **OK**

**PC**

type: `http://sitecom.extender`

 Open your browser

**Mac**

User name: **admin**  
Password: **admin**

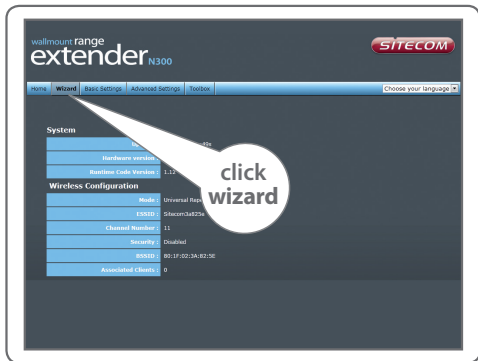
log in to this area

click **Log in**

**Mac**



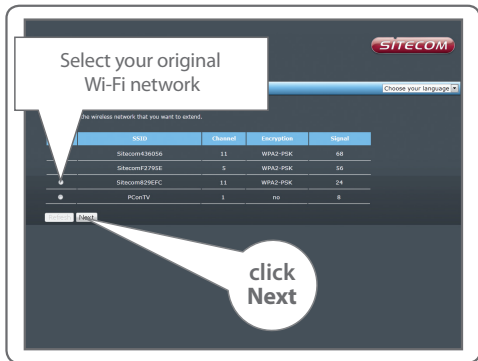
F



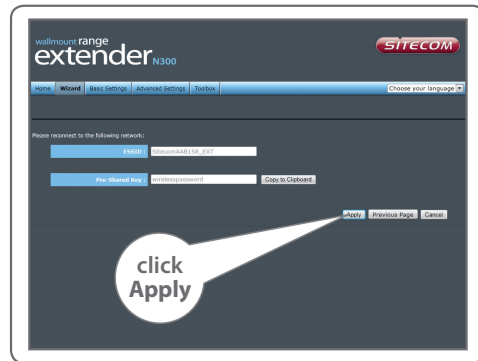
H



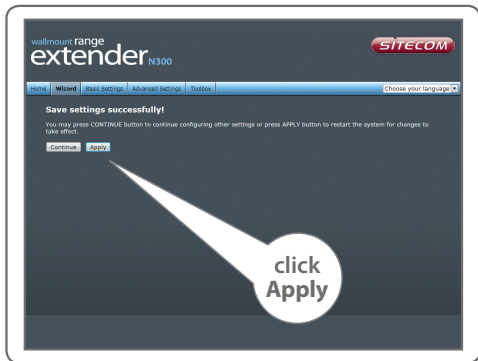
G



I



# J



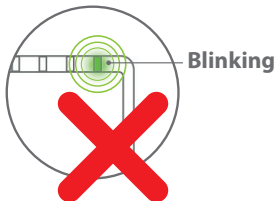
# K



## wait 1 min.



Solid



Blinking



- UK** Confirm the position with the signal strength LED.  
**Solid green:** ideal position, **blinking green:** move range extender closer to the (modem) router.
- FR** Vérifiez la position à l'aide de la diode électroluminescente d'intensité du signal. **Allumée en vert:** position idéale, **clignotante en vert:** rapprochez le Range Extender du routeur (ou du modem-routeur).
- DE** Überprüfen Sie die Position mit der Signalstärke-LED.  
**Konstant grün:** ideale Position, **grün blinkend:** verkleinern Sie den Abstand zwischen Range Extender und (Modem) Router.
- NL** Controleer de positie met de LED-siginaalindicator.  
**Brandt groen:** optimaal. **Knippert groen:** plaats Range Extender dicht bij router (modem).
- IT** Verificare la posizione con il LED di potenza del segnale.  
**verde fisso:** posizione ideale; **verde lampeggiante:** spostare l'estensore di portata avvicinandolo al (modem) router.
- ES** Confirme la posición con el LED de fuerza de señal.  
**verde intenso:** posición ideal, **verde parpadeante:** mover el extensor de rango más cerca del (módem) router.
- PT** Confirme a posição com o LED indicador de força do sinal.  
**verde aceso:** posição ideal, **verde a piscar:** aproxime o range extender do (modem) router.
- RU** Проверьте правильность положения с помощью индикатора мощности сигнала. **Постоянный зеленый:** идеальное положение; **мигающий зеленый:** переместите расширитель диапазона ближе к маршрутизатору (модему).



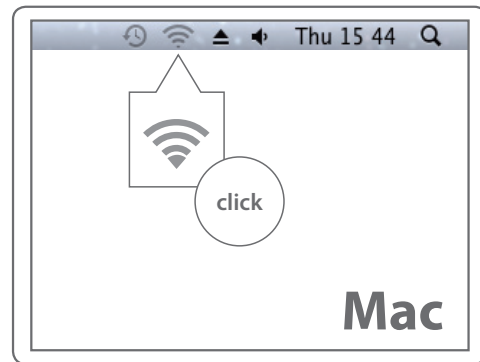
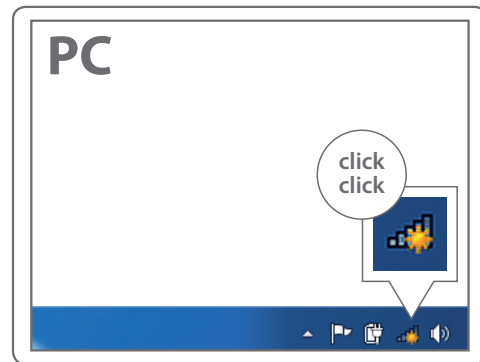
## Go to step 3

3

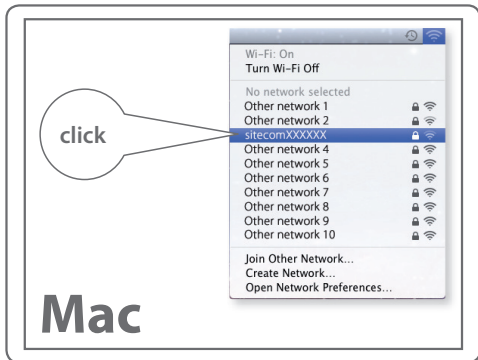
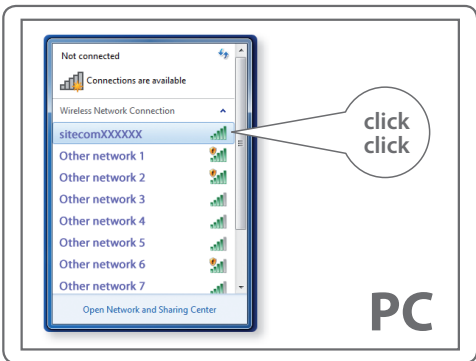
## Connect to your PC / Mac

- NL Aansluiten op je PC / Mac
- IT Connetti al PC / Mac
- DE Verbindung zum PC / Mac
- ES Conéctese a su PC / Mac
- PT Ligue ao seu PC / Mac
- FR Peut être connecté à votre ordinateur PC / Mac
- RU Подключитесь к PC / Mac

A

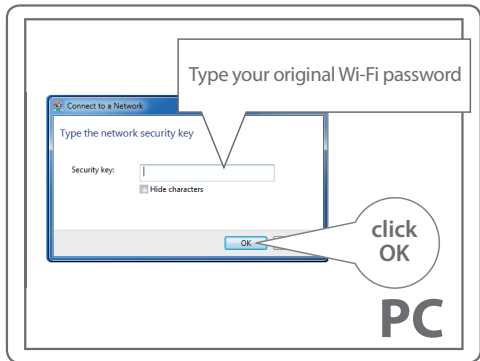


# B

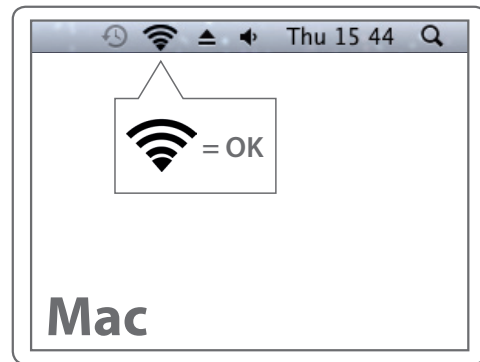
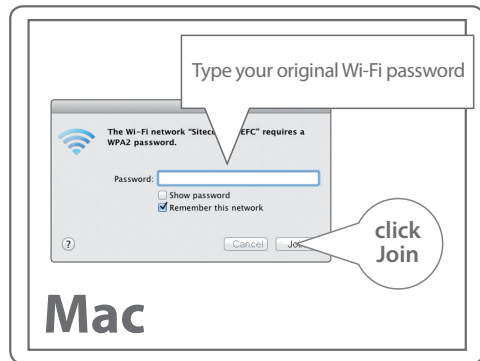
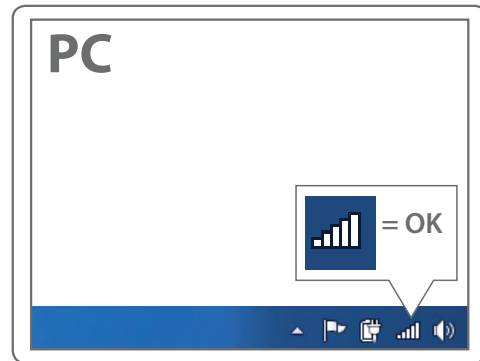


- ! UK The Extender's wireless network name (**SSID**) changes to your existing Wi-Fi network name, with **\_EXT** at the end of the name.
- FR Le nom de réseau sans fil (**SSID**) de l'Extender reprend le nom de votre réseau Wi-Fi existant, complété du suffixe **\_EXT**.
- DE Der WLAN-Name (**SSID**) des Extenders wird auf den Namen des bestehenden WLANs geändert, und es wird **\_EXT** angehängt.
- NL De naam van het draadloze netwerk (**SSID**) van de Extender verandert in je bestaande WiFi-netwerknaam en heeft de aanduiding **\_EXT** aan het einde van de naam.
- IT Il nome della rete dell'Extender (**SSID**) prenderà il nome della tua rete wireless con il suffisso **\_EXT**.
- ES El nombre de la red inalámbrica del amplificador de señal (**SSID**) cambia a su nombre de red Wi-Fi actual, con el sufijo **\_EXT** al final del nombre.
- PT O nome da rede sem fios do Ampliador (**SSID**) muda para o nome da rede Wi-Fi existente, com **\_EXT** no fim do nome.
- RU Имя беспроводной сети расширителя (**SSID**) изменится на существующее сетевое имя Wi-Fi с **\_EXT** на конце имени.

# C



# D



# E



## Done. Enjoy!

Trouble? [www.sitecom.com/helpdesk](http://www.sitecom.com/helpdesk)

## Indication of the LEDs

NL	Indicatie van de LED's	PT	Indicação dos LEDs
IT	Indicatori LED	FR	Signification des diodes
DE	LED-Anzeigen	RU	Индикация на светодиодах
ES	Indicación de los LED		

