

Gigaset

SL930A

Congratulations

By purchasing a Gigaset, you have chosen a brand that is fully committed to sustainability. This product's packaging is eco-friendly!

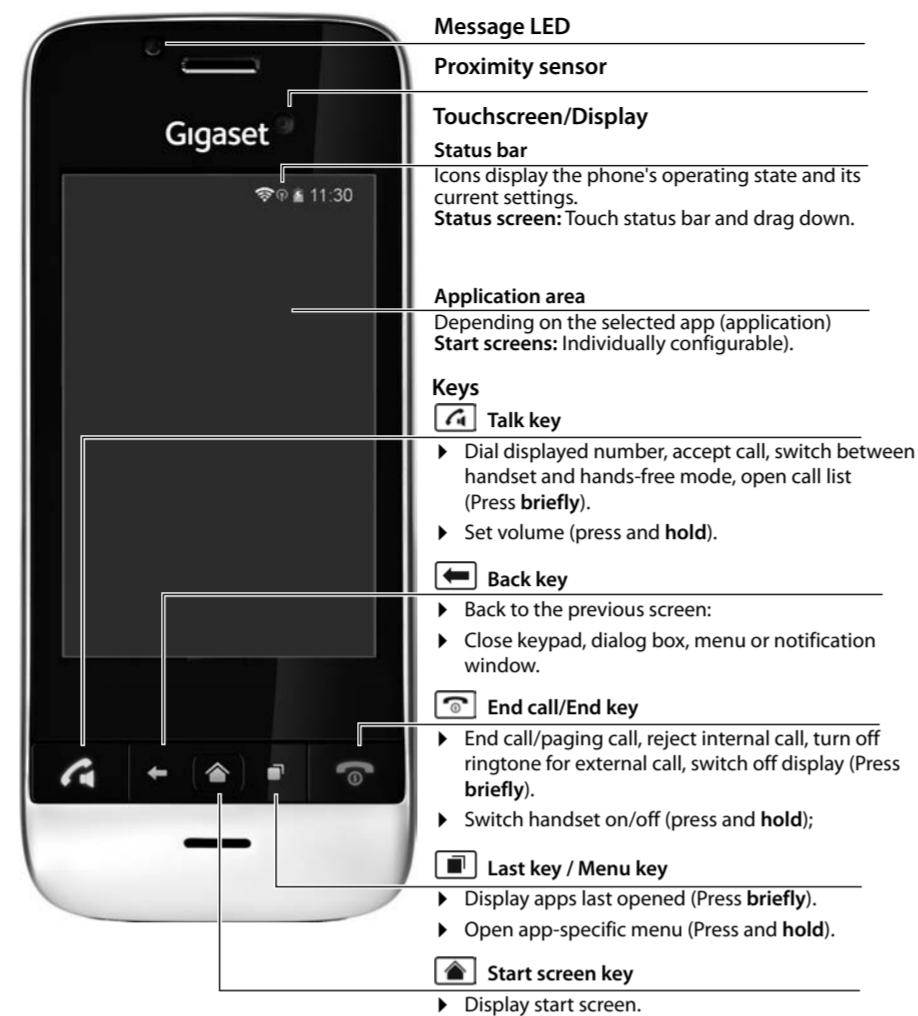
To learn more, visit www.gigaset.com.



GIGASET HELPLINE: 08450 318190

GIGASET. INSPIRING CONVERSATION.
MADE IN GERMANY

Overview



If you have problems setting up or operating this product please call
GIGASET UK HELPLINE 08450 318190
GIGASET IRL HELPLINE 0818 2000 33

To download the latest full Gigaset SL930A and other user guides, visit our website:
www.gigaset.com/uk

Message LED

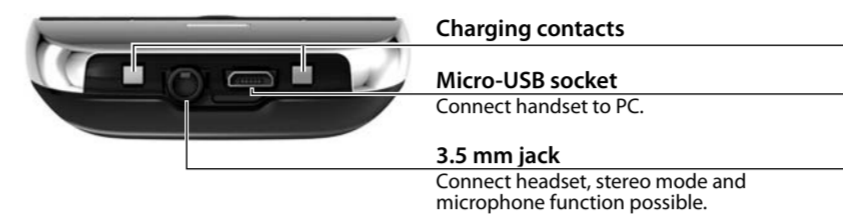
The message LED is situated on the left next to the earpiece. It indicates, for example:

- ◆ Missed calls
- ◆ New messages on the answer machine
- ◆ Missed appointments

For an event, which is indicated using the message LED, you are given additional information on the status screen.



Connections



Base



User guide

Online: As soon as your phone is connected to the WLAN and is able to establish an Internet connection, you can use the online help on the handset.

- ▶ Open the application menu and tap on **Help** .

To enable you to quickly find the desired information, a table of contents , an index and a search function are available. The online help provides comprehensive information about its navigation options on the first page.

Getting started

i To use Internet services on your phone, you need an operational router with WLAN functionality and an Internet connection to which you register your handset as a WLAN client.

Install the base and charging cradle

The base and charging cradle are designed for use in closed, dry rooms within a temperature range of +5°C to +45°C.

- ▶ Position the base on a level, non-slip surface at a central point in the building or house, or mount the base onto the wall.

- i**
- ◆ Range for telephone mode:
Pay attention to the DECT range of the base. This is up to 50 m inside buildings and up to 300 m in unobstructed outdoor areas. The range is reduced when **Maximum range** is deactivated.
▶ Menu ▶ Settings ▶ DECT.
 - ◆ Range for data connections:
The WLAN range of the router is normally lower than the range of the base. Refer to the user guide for your router to determine this.
 - ◆ Never expose the phone to heat sources, direct sunlight or other electrical devices.
 - ◆ Protect your phone from moisture, dust, corrosive liquids and vapours.



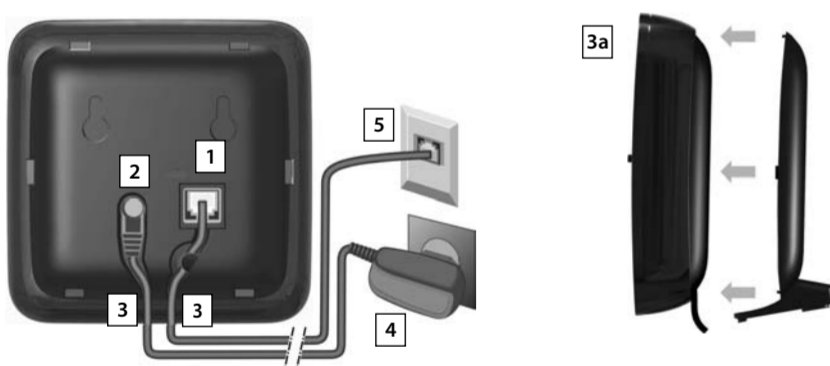
A31008-M2311-L121-1-7643

Issued by
Gigaset Communications GmbH
Frankenstr. 2a
D-46395 Bocholt

© Gigaset Communications GmbH 2013
Subject to availability. All rights reserved.
Rights of modification reserved.
www.gigaset.com

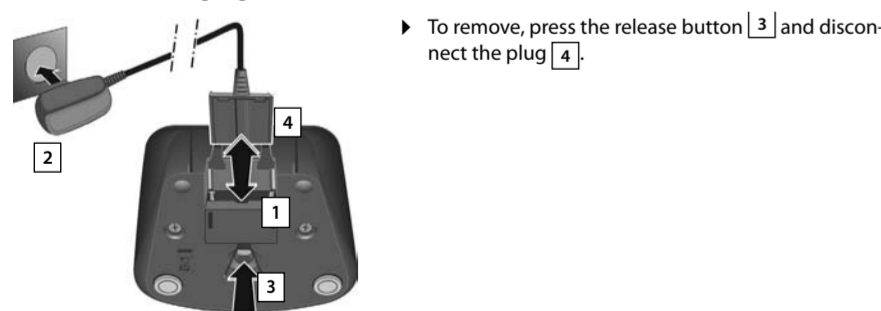
Google, Google Play, Android and other marks are trademarks of Google Inc.

Connect the base to the telephone network and the mains power supply in the order shown below:



- i**
- ◆ The power adapter must **always** be connected, as the phone will not operate without a power supply.
 - ◆ Use only the **supplied** power adapter and phone cord. The pin connections on telephone cables may vary.

Connect the charging cradle



Set up the handset for use

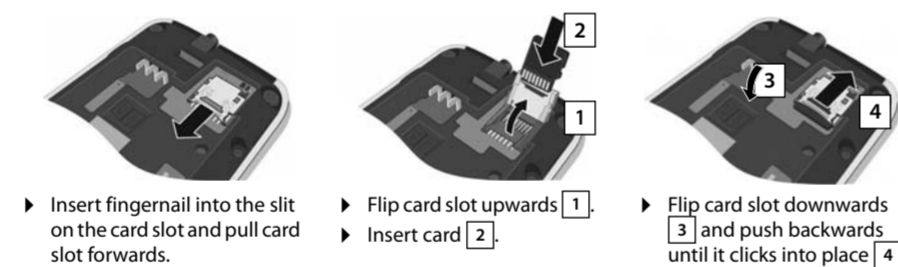
i To be able to use the full range of phone functions, we recommend operating the handset together with a Gigaset SL930A base. You can also register the Gigaset SL930H base to another base. You can find more information about the handset functions in connection with the individual Gigaset base at: www.gigaset.com/compatibility.

The handset display and keys are protected by a film. **Please remove the protective film!**

! Please **do not** use a touchscreen pen to operate the handset! Do not use any other manufacturers' protective case / film. They may restrict the operability of your handset.

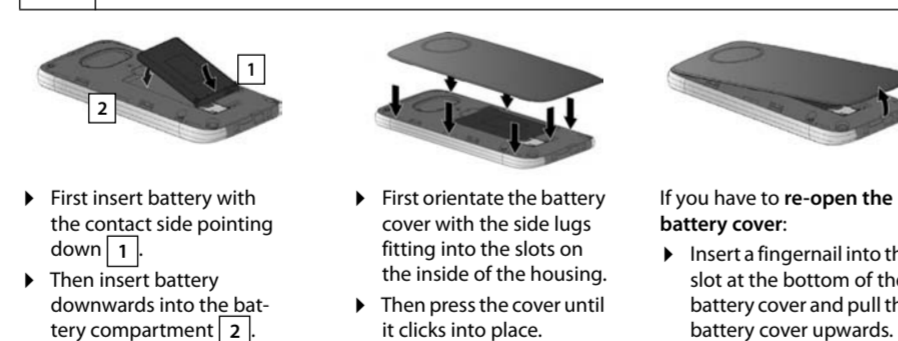
Insert SD card (not included)

In order to store personal data, images, videos or music, you can insert a microSD card into your handset.



Insert the battery and close the battery cover

! Use only the rechargeable battery recommended by Gigaset Communications GmbH, as this could otherwise result in significant health risks and personal injury. For example, the outer casing of the battery could be destroyed or the battery could explode. The phone could also malfunction or be damaged.



Charge the battery

The battery is supplied partly charged. Please charge it completely before use.

- ▶ Charge the handset in the charging cradle for **4 hours**. The handset automatically switches on when you place it into the charging cradle.

- i**
- ◆ The handset may only be placed in the designated charging cradle.
 - ◆ The battery may heat up during charging. This is not dangerous.
 - ◆ After a time, the charge capacity of the battery will decrease for technical reasons.



Basic settings

Before you use your phone, make the following settings:

- ◆ Change the language.
- ◆ Set the country and area code
- ◆ Register the handset. To do this you need the system PIN for the base.
- ◆ Connect the phone to the WLAN. To do this, you will need the access data to your WLAN (network name and password). To use Internet services on your phone, you will need a router with WLAN functionality and an Internet connection.

If the phone has not yet been switched on: ▶ Press and hold the End call key .

You configure all the settings using the Settings menu.

Open the Settings menu: ▶ Open the application menu ▶ Tap on Settings .

- i**
- ◆ Information on operating the touchscreen.
 - ◆ Information on entering text.
 - ◆ Information on the Application menu.

Change the language

- ▶ Menu ▶ Settings ▶ Language & input ▶ Language.

A list of available languages is displayed.

- ▶ Select desired language. Where applicable, scroll through the list to the desired language.

If the language is spoken in several countries, select the entry for the country.

Your language selection is immediately activated.

Set the country and area code

The country selection is the basis for the automatic setting of time zone and country code. Your phone needs a country and area code to correctly dial telephone numbers, which may be saved in different formats on your handset, and to load country-specific applications.

! If you skip this setting, it may be the case that numbers in your phonebook, although they formally look correct, cannot be dialled.

- ▶ Press on start screen key . ▶ Tap on ▶ Open context menu . ▶ Tap on Settings.

- ▶ **Country:** ▶ Select country from the list.

The country code is automatically set to fit the selected country. If your country is not in the list, select **Other country** (at the very bottom of the list) and enter the country code yourself.

- ▶ **Country (dial code):** ▶ Enter country code. ▶ Confirm by pressing OK.

- ▶ **Area (dial code):** ▶ Enter area code. ▶ Confirm by pressing OK.

The code consists of a prefix and the number. The country-specific prefix is placed before the area code number if the country code is not also dialled.

Register the handset

Handsets contained in the package have already been registered to the base. If however a handset has not been registered, register it now.

On the base: ▶ Press and hold the Registration/paging key

(min. 5 secs).

On the handset within a minute:

- ▶ Menu ▶ Settings ▶ Handsets & base ▶ Register.
- ▶ Enter the system PIN if required (factory setting: 0000). ▶ Confirm PIN by pressing OK.

The connection to the base is established; this may take some time. Following a **successful registration** the message **Handset registered** is displayed.

- ▶ Confirm message by pressing OK.

Connect the handset to WLAN

- ▶ Menu ▶ Settings ▶ Wi-Fi.
- ▶ Switch on WLAN with the sliding switch.

A list of WLANs in range of your phone is displayed.

- ▶ Tap on the desired WLAN. If necessary, tap on **SCAN** to update the list.

The signal strength of the selected WLAN and the security protocol used are displayed.

- ▶ Enter **Password** (network key).

- ▶ Tap on **Connect**.

If the desired network is not displayed:

- ▶ Tap on **ADD A NETWORK**. ▶ Enter the **Network SSID** for the desired WLAN. ▶ Select security procedure. ▶ Enter password (network key). ▶ Tap on **Connect**.

If the handset is able to establish an Internet connection, the date and time are automatically set.

Your phone is now ready for use.

Switch the handset on/off

Switch on: ▶ Press the End call key . The device switches on after a few seconds.

Or: ▶ Place the handset into the charging cradle. It switches on after about 35 seconds.

Switch off: ▶ Press and hold the End call key . ▶ **Power off** ▶ OK.

i If a screen lock has been set up: ▶ Unlock the screen.

