

*Pioneer*

**X-EM22**  
**X-EM12**

CD Receiver System



Discover the benefits of registering your product online at  
<http://www.pioneer.co.uk> (or <http://www.pioneer.eu>).

Operating Instructions



## CAUTION

TO PREVENT THE RISK OF ELECTRIC SHOCK, DO NOT REMOVE COVER (OR BACK). NO USER-SERVICEABLE PARTS INSIDE. REFER SERVICING TO QUALIFIED SERVICE PERSONNEL.

D3-4-2-1-1\_B1\_En

## WARNING

This equipment is not waterproof. To prevent a fire or shock hazard, do not place any container filled with liquid near this equipment (such as a vase or flower pot) or expose it to dripping, splashing, rain or moisture.

D3-4-2-1-3\_A1\_En

## WARNING

To prevent a fire hazard, do not place any naked flame sources (such as a lighted candle) on the equipment.

D3-4-2-1-7a\_A1\_En

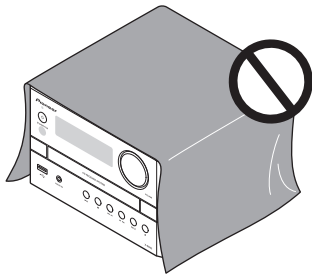
## VENTILATION CAUTION

When installing this unit, make sure to leave space around the unit for ventilation to improve heat radiation (at least 10 cm at top, 10 cm at rear, and 10 cm at each side).

## WARNING

Slots and openings in the cabinet are provided for ventilation to ensure reliable operation of the product, and to protect it from overheating. To prevent fire hazard, the openings should never be blocked or covered with items (such as newspapers, table-cloths, curtains) or by operating the equipment on thick carpet or a bed.

D3-4-2-1-7b\*\_A1\_En



## Operating Environment

Operating environment temperature and humidity:  
+5 °C to +35 °C (+41 °F to +95 °F); less than 85 %RH  
(cooling vents not blocked)

Do not install this unit in a poorly ventilated area, or in locations exposed to high humidity or direct sunlight (or strong artificial light)

D3-4-2-1-7c\*\_A1\_En

## CAUTION

The **STANDBY/ON** switch on this unit will not completely shut off all power from the AC outlet. Since the power cord serves as the main disconnect device for the unit, you will need to unplug it from the AC outlet to shut down all power. Therefore, make sure the unit has been installed so that the power cord can be easily unplugged from the AC outlet in case of an accident. To avoid fire hazard, the power cord should also be unplugged from the AC outlet when left unused for a long period of time (for example, when on vacation).

D3-4-2-2-2a\*\_A1\_En

## CAUTION

This product is a class 1 laser product classified under the Safety of laser products, IEC 60825-1:2007.

**CLASS 1 LASER PRODUCT**

D58-5-2-2a\_A1\_En

This product is for general household purposes. Any failure due to use for other than household purposes (such as long-term use for business purposes in a restaurant or use in a car or ship) and which requires repair will be charged for even during the warranty period.

K041\_A1\_En

## WARNING

Store small parts out of the reach of children and infants. If accidentally swallowed, contact a doctor immediately.

## POWER-CORD CAUTION

Handle the power cord by the plug. Do not pull out the plug by tugging the cord and never touch the power cord when your hands are wet as this could cause a short circuit or electric shock. Do not place the unit, a piece of furniture, etc., on the power cord, or pinch the cord. Never make a knot in the cord or tie it with other cords. The power cords should be routed such that they are not likely to be stepped on. A damaged power cord can cause a fire or give you an electrical shock. Check the power cord once in a while. When you find it damaged, ask your nearest PIONEER authorized service center or your dealer for a replacement.

5002\*\_A1\_En

## Condensation

If the unit is moved suddenly from a cold place into a warm room (in winter, for example) or if the temperature in the room in which the player is installed rises suddenly due to a heater, etc., water droplets (condensation) may form inside (on operating parts and the lens). When condensation is present, the player will not operate properly and playback is not possible. Let the player stand at room temperature for 1 or 2 hours with the power turned on (the time depends on the extent of condensation). The water droplets will dissipate and playback will become possible. Condensation can also occur in the summer if the player is exposed to the direct wind from an air-conditioner. If this happens, move the player to a different place.

5005\_A1\_En

## Radio wave caution

*X-EM22 only*

This unit uses a 2.4 GHz radio wave frequency, which is a band used by other wireless systems (Microwave ovens and Cordless phones, etc.). In this event noise appears in your television image, there is the possibility this unit (including products supported by this unit) is causing signal interference with the antenna input connector of your television, video, satellite tuner, etc. In this event, increase the distance between the antenna input connector and this unit (including products supported by this unit).

- Pioneer is not responsible for any malfunction of the compatible Pioneer product due to communication error/malfunctions associated with your network connection and/or your connected equipment. Please contact your Internet service provider or network device manufacturer.
- A separate contract with/payment to an Internet service provider is required to use the Internet.

## Information for users on collection and disposal of old equipment and used batteries

(Symbol for equipment)



These symbols on the products, packaging, and/or accompanying documents mean that used electrical and electronic products and batteries should not be mixed with general household waste.

For proper treatment, recovery and recycling of old products and used batteries, please take them to applicable collection points in accordance with your national legislation.

(Symbol examples for batteries)



By disposing of these products and batteries correctly, you will help to save valuable resources and prevent any potential negative effects on human health and the environment which could otherwise arise from inappropriate waste handling.

For more information about collection and recycling of old products and batteries, please contact your local municipality, your waste disposal service or the point of sale where you purchased the items.

**These symbols are only valid in the European Union.**

**For countries outside the European Union:**

If you wish to discard these items, please contact your local authorities or dealer and ask for the correct method of disposal.



K058a\_A1\_En

Thank you for buying this Pioneer product.

Please read through these operating instructions so that you will know how to operate your model properly. After you have finished reading the instructions, put them in a safe place for future reference.

# Contents

## 01 Before you start

Introduction	5
What's in the box	5
Loading the battery in the remote control	5

## 02 Part names and functions

Overview of the main unit	7
Overview of the remote control	8

## 03 Connections

Speaker connection	9
FM antenna installation	10
Connect power	10

## 04 Getting started

Turning on	11
APS mode	11
Setting the clock	11
Selecting a source	11

## 05 Playing

Playing a disc	12
Playing from a USB storage device	12
Controlling playback	12
Programming tracks	13
For a CD	13
For WMA/MP3 files	13
Erasing the program	13

## 06 Bluetooth® Audio playback (X-EM22 only)

Music playback using <i>Bluetooth</i> wireless technology	14
Remote control operation	14
Pairing with the unit (Initial registration)	14
Listen to music on the unit from a <i>Bluetooth</i> capable device	15
Radio wave caution	15
Scope of operation	15
Radio wave reflections	16
Precautions regarding connections to products supported by this unit	16

## 07 Listening to the FM radio

Tuning to an FM radio station	17
Programming radio stations	17
Tuning to a preset radio station	17
Display RDS information	17

## 08 Other features

Turn on automatically	18
Setting the sleep timer	18
Routing audio from other devices	18
Through the AUDIO IN socket	18
USB 500 mA charge	18
Setting and deactivating the DEMO mode	18

## 09 Additional information

USB playability information	19
Supported MP3 disc formats	19
RDS program types	19
Troubleshooting	20
Cautions on use	21
When moving this unit	21
Place of installation	21
Do not place objects on this unit	21
Cleaning the product	22
Cleaning the lens	22
Handling discs	22
Storing	22
Cleaning discs	22
About specially shaped discs	22
Specifications	23

## Chapter 1:

# Before you start

## Introduction

### With this system, you can:

- enjoy audio from discs, USB storage devices, and other external devices
- listen to FM radio stations
- enjoy audio from *Bluetooth* wireless technology enabled device (X-EM22 only)

### Playable media:

- Discs: CD-DA, CD-R, CD-RW, MP3-CD, WMA-CD
- Files: .mp3, .wma
- USB storage device
  - Compatibility: USB 1.1/2.0 (Full Speed)
  - Class support: MSC (Mass Storage Class)
  - File system: FAT12, FAT16, FAT32
  - Maximum number of albums/folders: 99
  - Maximum number of tracks/files: 999
  - Maximum level of directory: 8

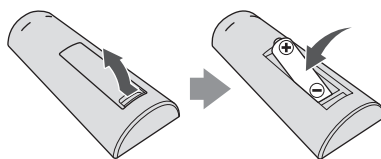
## What's in the box

Check and identify the contents of the package:

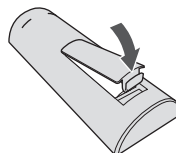
- Main unit
- Speaker unit x 2
- Remote control
- AAA battery (R03)
- Warranty card
- Operating Instructions (this document)

## Loading the battery in the remote control

1 Open the rear lid and load the battery as illustrated below.



2 Close the rear lid.



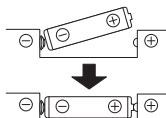
The battery included with the unit has been provided to allow you check product operation and may not last long. We recommend using an alkaline battery that has a longer life.

### CAUTION

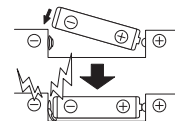
- When inserting the battery, make sure not to damage the spring on the battery's  $\ominus$  terminal. This can cause the battery to leak or overheat.



Insert the battery by aligning the  $\ominus$  pole against the remote control's  $\ominus$  terminal



If a battery pushes and bends the  $\ominus$  terminal out of shape, there is possibility of the alkaline battery shorting out



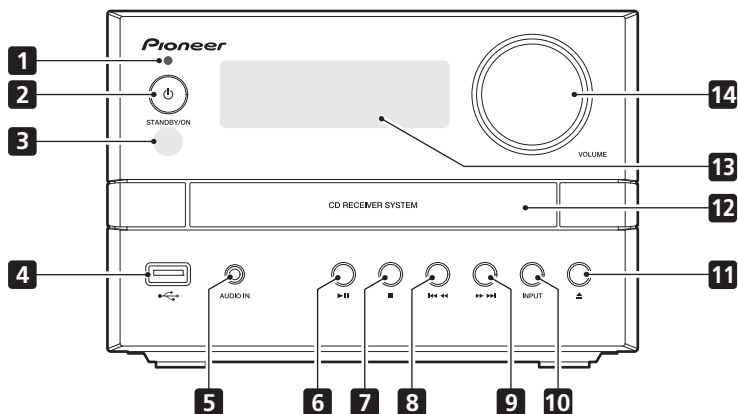
The  $\ominus$  terminal is bent out of shape

- Do not use any battery other than the one specified.
- When loading the battery into the remote control, set it in the proper direction, as indicated by the polarity marks (⊕ and ⊖).
- Do not heat the battery, disassemble it, or throw it into flames or water.
- To prevent leakage of battery fluid, remove the battery if you do not plan to use the remote control for a long period of time (1 month or more). If the fluid should leak, wipe it carefully off the inside of the case, then insert a new battery. If a battery should leak and the fluid should get on your skin, flush it off with large quantities of water.
- When disposing of a used battery, please comply with governmental regulations or environmental public institution's rules that apply in your country/area.
- **WARNING**  
Do not use or store batteries in direct sunlight or other excessively hot place, such as inside a car or near a heater. This can cause batteries to leak, overheat, explode or catch fire. It can also reduce the life or performance of batteries.

## Chapter 2:

## Part names and functions

## Overview of the main unit

1 **Bluetooth indicator (X-EM22 only)**2 **STANDBY/ON**

- Switch between standby and on.

3 **Remote control sensor**

- Point the remote control to this, and then operate it within approximately 7 m. The product may have trouble capturing remote control signals if there is a fluorescent light nearby. If this happens, move the product away from the fluorescent light.

4 

- Connect to a USB storage device.

5 **AUDIO IN**

- Connect to the audio output socket (usually the headphones socket) of an external device.

6 **▶||**

- Use to play, pause, or resume playback.

7 **■**

- Use to stop playback.

8 **◀◀◀**

- Skip to the previous track.
- Press and hold to play reverse quickly within a track.
- Tune to the previous radio station.
- Press and hold to search the previous radio station automatically.

9 **▶▶▶**

- Skip to the next track.
- Press and hold to play forward quickly within a track.
- Tune to the next radio station.
- Press and hold to search the next radio station automatically.

10 **INPUT**

- Press repeatedly to select the input source.

11 **▲**

- Open or close the disc tray.

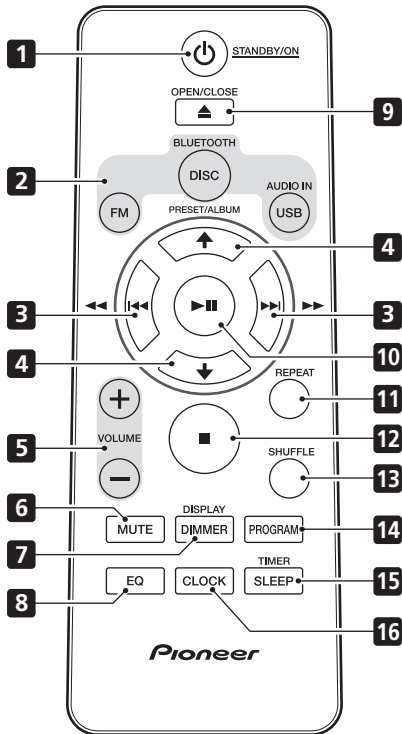
12 **Disc tray**

- Place the disc with the label side up.

13 **Main display**14 **VOLUME**

- Rotate to increase or decrease the volume level.

## Overview of the remote control



### 1 STANDBY/ON

- Switch between standby and on.

### 2 **Input function buttons**

- Use to select the input source (**DISC**, **BT** (X-EM22 only), **USB**, **AUDIO IN**, **TUNER**).

### 3

- Skip to the track.
- Press and hold to play quickly within a track.
- Tune to the station.
- Press and hold to search the radio station automatically.

### 4

- Skip to the previous or next album.
- Select a preset radio station.

### 5 **VOLUME +/-**

- Use to set the listening volume.

### 6 **MUTE**

- Use to mute or restore volume.

### 7 **DIMMER/DISPLAY**

- Display the current status or media information.
- Display the available ID3 information of MP3 tracks.
- Press and hold to dim or brighten the display. The brightness can be controlled in three steps. However the brightness cannot be controlled during FM entry.
- Display the available information of an RDS radio station.

### 8 **EQ**

- Use to select EQ.  
[FLAT] → [ROCK] → [CLASSIC] → [POP] → [JAZZ] → (Back to beginning)

### 9 **OPEN/CLOSE**

- Open or close the disc tray.

### 10 **▶||**

- Use to play, pause, or resume playback.
- Use to confirm actions.

### 11 **REPEAT**

- Use to select the repeat mode of each input source.
- [CD]/[BT]  
Repeat 1 [REP ONE] → Repeat all [REP ALL] → (Back to beginning)
- [USB]  
Repeat 1 [REP ONE] → Repeat album [REP ALB] → Repeat all [REP ALL] → (Back to beginning)

### 12 **■**

- Use to stop playback.

### 13 **SHUFFLE**

- Shuffled order of track playback from a **DISC**, **USB**.

### 14 **PROGRAM**

- Use to program audio tracks.
- Use to program radio stations.

### 15 **SLEEP/TIMER**

- Set the sleep timer in the working mode.
- Set alarm timer in the standby mode.

### 16 **CLOCK**

- In the working mode or standby mode, press to display the clock for a while.
- In the standby mode, press and hold to set the clock.



## Chapter 3:

# Connections

### ⚠ CAUTION

- Be sure to turn off the power and unplug the power cord from the power outlet whenever making or changing connections.
- Connect the power cord after all the connections between devices have been completed.

- Make sure that the speaker cable cores do not become exposed and make contact with other cable cores. This may cause malfunction of the product.
- Do not allow the speaker cable core to come into contact with the receiver body.



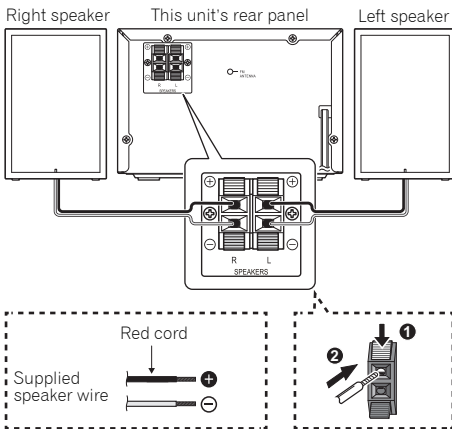
## Speaker connection

- Push open the tabs and insert exposed wire.
- Use the provided speaker wires to connect this unit with the speakers. Connect the tip of the red wire to the (+) terminal and the tip of the black wire to the (-) terminal.
- Both speakers can be used on either the right or the left side.

- If the speaker cable core comes into contact with any metal portion of the receiver's body, it may damage the speakers and cause smoke and fire. Insert speaker cables securely into the terminals and check that the cable does not come out of easily.

### 📝 Note

- There is no difference between L and R speakers.



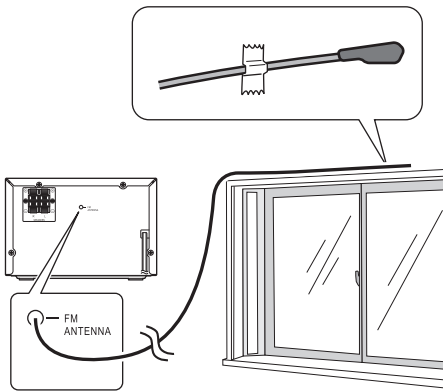
### ⚠ CAUTION

- These speaker terminals carry **HAZARDOUS LIVE voltage**. To prevent the risk of electric shock when connecting or disconnecting the speaker cables, disconnect the power cord before touching any uninsulated parts.
- Do not connect any speakers other than those supplied to this system.
- Do not connect the supplied speakers to any amplifier other than the one supplied with this system. Connection to any other amplifier may result in malfunction or fire.
- Do not attach these speakers to the wall or ceiling. They may fall off and cause injury.

## FM antenna installation

### Note

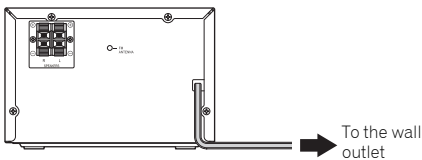
- The antenna on the back panel is used to improve reception of FM. Extend this antenna and fix it to a position with the best reception.
- Never tug strongly on the antenna line since damage of an antenna may be caused.
- This product does not support MW (medium wave) radio reception.



## Connect power

### Note

- Before you connect the AC power cord, make sure that you have completed all other connections.



Connect the AC power cord to the wall outlet.

## Chapter 4:

## Getting started

**⚠ CAUTION**

- Use of controls or adjustments or performance of procedures other than herein expressly specified may result in hazardous radiation exposure or other unsafe operation.

Always follow the instructions in this chapter in sequence.

**Turning on****▶ Press  STANDBY/ON**

This product switches to the last selected source.

**APS mode**



- After this product is kept inactive for 15 minutes, it automatically switches to the standby mode.

**Setting the clock**** Note**



- During setting, if no action is made within 90 seconds, the system exits clock setting without saving earlier operations.
- When power supply is restored after unit is plugged in again or after a power failure, reset the clock.

**1 In the standby mode, press and hold CLOCK to activate clock setting.**



[24H] blinks.

**2 Press   to select [24H] or [12H] and then press CLOCK to confirm.**

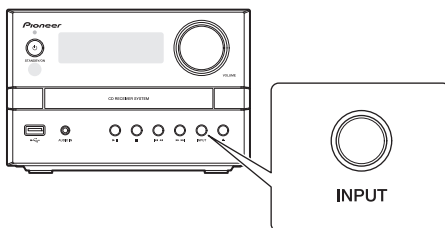
The hour digits will blink.

**3 Press   to set the hour, and then press CLOCK to confirm.**

The minute digits blink.

**4 Press   to set the minute, and then press CLOCK to confirm.****Selecting a source**

Press **INPUT** repeatedly to select a source.



- **[DISC]**: the disc in the disc tray
- **[BT]**: Bluetooth capable device that is paired (X-EM22 only)
- **[USB]**: .wma/.mp3 files stored on the connected USB storage device
- **[TUNER]**: the FM radio
- **[AUDIO IN]**: the audio input through the **AUDIO IN** socket

## Chapter 5: Playing

### Playing a disc

1 Press **DISC** on the remote control or **INPUT** repeatedly on the main unit to switch the source to **[DISC]**.

2 Press **▲** to eject the disc tray.

3 Load a disc with the printed side facing up.

4 Press **▲** again to close the disc tray.

Playback starts automatically after a few seconds.

- If playback does not start automatically, press **▶▶** to start playback.

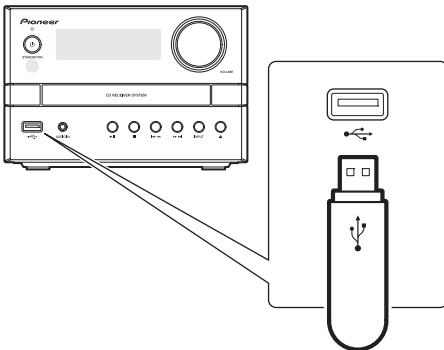
### Playing from a USB storage device

This system can play .mp3 and .wma files that are copied onto a supported USB storage device:

- Flash drive
- Memory card reader
- HDD: hard disk drive (This product can detect only a portable HDD with USB power peak current no more than 500 mA.)

#### Note

- Pioneer does not guarantee compatibility with all USB storage devices.
- NTFS (New Technology File System) file system is not supported.



1 Connect the USB storage device to the USB socket.

2 Press **USB** on the remote control or **INPUT** repeatedly on the main unit to switch the source to **[USB]**.

Playback starts automatically.

If playback does not start automatically,

1 Press **↑/↓** to select an album.

2 Press **◀◀/▶▶** to select a track.

3 Press **▶▶** to start playback.

### Controlling playback

During playback, follow the instructions below to control playback.

Buttons	Functions
<b>▶▶</b>	Pause or resume playback.
<b>■</b>	Stop playback.
<b>◀◀/▶▶</b>	Skip to the previous or next track.  Press and hold to rewind a track or search forward fast within a track.
<b>↑/↓</b>	Skip to the previous or next album when no less than one album exists.
<b>REPEAT</b>	Select an available play mode. <ul style="list-style-type: none"> <li>• Repeat 1 <b>[REP ONE]</b>: repeat the current track</li> <li>• Repeat all <b>[REP ALL]</b>: repeat all tracks</li> <li>• Repeat album <b>[REP ALB]</b>: repeat the current album (only USB function)</li> </ul>
<b>SHUFFLE</b>	Select an available play mode. <ul style="list-style-type: none"> <li>• Shuffle <b>⌘</b>: play tracks randomly</li> </ul> Shuffle <b>⌘</b> is unavailable for programmed tracks.

## Programming tracks

### Note

- You can program up to 20 tracks.
- During programming, if no operation is made within 20 seconds, the system returns to the stop mode without saving earlier operations.

### For a CD

#### 1 Press to stop playback.

[T0], the total number of tracks, and the duration time are displayed.

#### 2 Press PROGRAM to activate the programming.

[01 PR01] (the sequence number) are displayed with [01] blinking.

#### 3 Press to select a track.

#### 4 Press PROGRAM again to program the selected track.

#### 5 Repeat steps 3 and 4 to program more tracks.

#### 6 Press to start playback.

### For WMA/MP3 files

#### 1 Press to stop playback.

[F XX] (XX indicates the total number of albums) and [XXX] (XXX indicates the total number of tracks) are displayed.

#### 2 Press PROGRAM to activate the programming.

[01 PR01] are displayed with [01] blinking.

#### 3 Press / repeatedly to select an album.

[F XX] (XX indicates the album number) are displayed.

#### 4 Press repeatedly to select a track.

[XXX] (XXX indicates the track number) are displayed.

#### 5 Press PROGRAM again to confirm the selected track.

#### 6 Repeat steps 3 to 5 to program more tracks.

#### 7 Press to start playback.

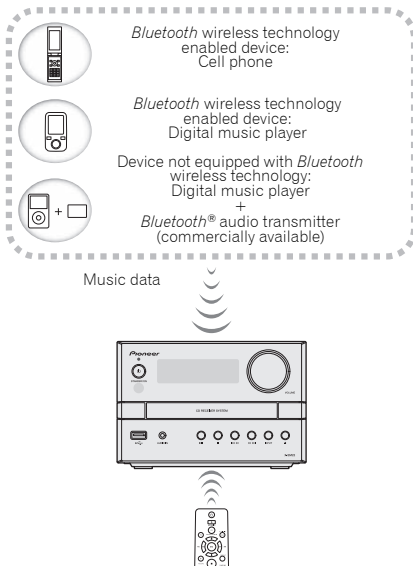
### Erasing the program

- ▶ To erase the program,
  - Switch to another source.

## Chapter 6:

# Bluetooth® Audio playback (X-EM22 only)

## Music playback using Bluetooth wireless technology



The unit is capable of playing back music stored on *Bluetooth* capable devices (cell phones, digital music players etc.) wirelessly. You can also use a *Bluetooth* audio transmitter (sold separately) to enjoy music from devices that do not have *Bluetooth* functionality. Please refer to the user's manual for your *Bluetooth* capable device for more details.

### Note

- The *Bluetooth*® word mark and logos are registered trademarks owned by Bluetooth SIG, Inc. and any use of such marks by PIONEER CORPORATION is under license. Other trademarks and trade names are those of their respective owners.
- The *Bluetooth* wireless technology enabled device must support A2DP profiles.
- Pioneer does not guarantee proper connection and operation of this unit with all *Bluetooth* wireless technology enabled devices.

## Remote control operation

The remote control supplied with this unit allows you to play and stop media, and perform other operations.

### Note

- The *Bluetooth* wireless technology enabled device must support AVRCP profiles.
- Remote control operations cannot be guaranteed for all *Bluetooth* wireless technology enabled devices.

## Pairing with the unit (Initial registration)

In order for the unit to playback music stored on a *Bluetooth* capable device, pairing must first be performed. Pairing should be performed when first using the unit with the *Bluetooth* capable device, or when the pairing data on the device has been erased for any reason.

Pairing is a step required to allow communication using *Bluetooth* wireless technology to be carried out.

- Pairing is only performed the first time that you use the unit and the *Bluetooth* capable device together.
- In order to allow communication using *Bluetooth* wireless technology to take place, pairing must be performed on both the unit and the *Bluetooth* capable device.

### 1 Press **BLUETOOTH** on the remote control or **INPUT** repeatedly on the main unit to switch the source to **[BT]**.

The *Bluetooth* indicator blinks.

### 2 Turn on the power to the *Bluetooth* capable device that you wish to pair with, and perform pairing procedure on it.

### Note

- This unit will be displayed as "X-EM22" on all *Bluetooth* capable devices that you have.

Pairing will start.

- Place the *Bluetooth* capable device close to the unit.
- Please refer to the user's manual for your *Bluetooth* capable device for details on when pairing can be performed and the procedures required for pairing.
- When PIN code entry is requested, enter "0000." (This unit does not accept any PIN code setting other than "0000.")

### 3 Confirm on the *Bluetooth* capable device that pairing has been completed.

- If pairing with the *Bluetooth* capable device has been completed correctly, a beep will sound, and the *Bluetooth* indicator will switch from blinking to staying lit.
- If the *Bluetooth* indicator will not switch from blinking to staying lit, the pairing was not completed correctly so please try pairing with the unit again.
- If pairing has been completed correctly, you need not repeat this procedure again.

Even devices that have already been paired with this unit will not connect during pairing mode in the following cases.

In such cases, delete pairing history from the *Bluetooth* wireless technology device and perform pairing again.

In order to pair with the unit, press and hold the ►|| on the unit for 3 seconds.

- Up to 8 pairing history can be recorded with this unit. If connecting to a *Bluetooth* wireless technology device over 8 units, the oldest pairing history will be deleted.
- If the settings are reset to the factory setting, all pairing history will be deleted. In order to reset to factory setting, press and hold the ►|| on the unit for more than 8 seconds.

## Listen to music on the unit from a *Bluetooth* capable device

### 1 Press **BLUETOOTH** on the remote control or **INPUT** repeatedly on the main unit to switch the source to **[BT]**.

The unit will start using the **BT** function, and connect with a *Bluetooth* capable device.

### 2 A *Bluetooth* connection will be created between the *Bluetooth* capable device and the unit.

Procedures for connecting to the unit should be performed from the *Bluetooth* capable device.

- Please refer to the user's manual for your *Bluetooth* capable device for details of the connection procedures.

### 3 Playback music from the *Bluetooth* capable device.

#### Note

- When *Bluetooth* capable device is not connected and no operations have been performed for more than 15 minutes, the unit will automatically power off.

## Radio wave caution

This unit uses a 2.4 GHz radio wave frequency, which is a band used by other wireless systems (see list below). To prevent noise or interrupted communication, do not use this unit nearby such devices, or make sure these devices are switched off during use.

- Cordless phones
- Cordless facsimiles
- Microwave ovens
- Wireless LAN devices (IEEE802.11b/g)
- Wireless AV equipment
- Wireless controllers for game systems
- Microwave-based health aids
- Some baby monitors

Other, less common, equipment that may operate on the same frequency:

- Anti-theft systems
- Amateur radio stations (HAM)
- Warehouse logistic management systems
- Discrimination systems for train or emergency vehicles

#### Note

- In the event noise appears in your television image, there is the possibility that a *Bluetooth* wireless technology enabled device or this unit (including products supported by this unit) are causing signal interference with the antenna input connector of your television, video, satellite tuner, etc. In this event, increase the distance between the antenna input connector and the *Bluetooth* wireless technology enabled device or this unit (including products supported by this unit).
- If there is something obstructing the path between this unit (including devices supported by this unit) and the device equipped with *Bluetooth* wireless technology (such as a metal door, concrete wall, or insulation containing tinfoil), you may need to change the location of your system to prevent signal noise and interruptions.

## Scope of operation

Use of this unit is limited to home use. (Transmission distances may be reduced depending on communication environment).

In the following locations, poor condition or inability to receive radio waves may cause the audio to be interrupted or stopped:

- In reinforced concrete buildings or steel framed or iron-framed buildings.
- Near large metallic furniture.
- In a crowd of people or near a building or obstacle.
- In a location exposed to the magnetic field, static electricity or radio wave interference from radio communication equipment using the same frequency band (2.4 GHz) as this unit, such as a 2.4 GHz wireless LAN device (IEEE802.11b/g) or microwave oven.

- If you live in a heavily populated residential area (apartment, townhouse, etc.) and if your neighbor's microwave is placed near your system, you may experience radio wave interference. If this occurs, move your unit to a different place. When the microwave is not in use, there will be no radio wave interference.

### **Radio wave reflections**

The radio waves received by this unit include the radio wave coming directly from the device equipped with *Bluetooth* wireless technology (direct wave) and waves coming from various directions due to reflections by walls, furniture and building (reflected waves). The reflected waves (due to obstacles and reflecting objects) further produce a variety of reflected waves as well as variation in reception condition depending on locations. If the audio cannot be received properly due to this phenomenon, try moving the location of the device equipped with *Bluetooth* wireless technology a little. Also note that audio may be interrupted due to the reflected waves when a person crosses or approaches the space between this unit and the device equipped with *Bluetooth* wireless technology.

### **Precautions regarding connections to products supported by this unit**

- Complete connections for all devices supported by this unit, including all audio cords and power cables before connecting them to this unit.
- After completing connections to this unit, check the audio and power cables to confirm that they not twisted together.
- When disconnecting this unit, confirm that you have sufficient working space in the surrounding area.
- When changing connections of audio or other cables for products supported by this unit, confirm that you have sufficient working space in the surrounding area.



## Chapter 7:

## Listening to the FM radio

## Tuning to an FM radio station

 Note

- Make sure that you have connected and fully extended the FM antenna.

**1 Press FM on the remote control or INPUT repeatedly on the main unit to switch the source to tuner.**

**2 Press and hold ◀▶ until the frequency starts to change.**

- To tune to a station at a specific frequency, press ◀▶ repeatedly until the desired frequency is displayed.

## Programming radio stations

 Note

- You can program up to 30 preset radio stations.
- To overwrite a programmed radio station, store another one with its sequence number.

**1 Tune to a radio station.**

**2 Press PROGRAM to activate programming.**  
[XX] (XX indicates the sequence number) blinks.

**3 Press ↑/↓ to allocate a sequence number from 1 to 30 to this radio station, and then press PROGRAM to confirm.**

The preset sequence number and the frequency of this radio station are displayed.

**4 Repeat steps 1-3 to program more stations.**

 Tip

- Press and holding **PROGRAM** will allow you to freely select any radio station. The selected station will be saved automatically.

## Tuning to a preset radio station

- Press ↑/↓ to select the sequence number of that preset radio station.

## Display RDS information

RDS (Radio Data System) is a service that allows FM stations to show additional information. If you tune to an RDS radio station, [RDS] and the station name are displayed.

**1 Tune to an RDS radio station.**

**2 Press DISPLAY repeatedly to scroll through the available information:**

- Station name
- Frequency
- Program type such as [NEWS] (news), [SPORT] (sport), [POP M] (pop music)...
- Text messages
- CT (Clock Time)

## Chapter 8:

## Other features

## Turn on automatically



You can set a time for automatic power on.

 **Note**

- Make sure that you have set the clock before this setup.



**1 In standby mode, press the CLOCK to display time and then press and hold SLEEP/TIMER.**

[SOURCE] (time for auto power on) blinks.

**2 Press**   **to select [SOURCE].**



**3 Press SLEEP/TIMER.**

The hour digits blink.



**4 Press**   **to set the hour.**

**5 Press SLEEP/TIMER again.**

The minute digits blink.

**6 Press**   **to set the minute.**

**7 Press SLEEP/TIMER again.**

**8 Press**   **to set the volume.**

**9 Press SLEEP/TIMER.**

The clock time and [TIMER] are displayed.

- To deactivate the timer, display the time and then press **SLEEP/TIMER** again.
- The power cannot be turned on while the timer is being set. Finish setting the time, then turn on the power.

## Setting the sleep timer

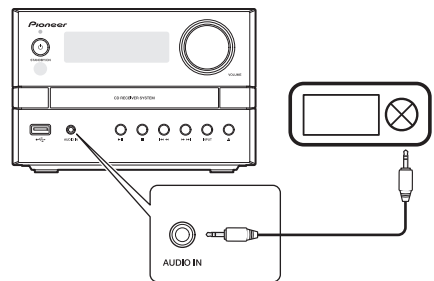
In the working mode, press **SLEEP/TIMER** repeatedly to select a preset period (15, 30, 45, 60, 90 or 120 minutes).

When the sleep timer is activated, [SLEEP] is displayed on the lower-right corner of the main display.

- To deactivate the sleep timer, press **SLEEP/TIMER** repeatedly until [SLEEPOFF] is displayed.

## Routing audio from other devices

## Through the AUDIO IN socket



**1 Connect a stereo mini-plug cable (commercially available) to**

- the **AUDIO IN** socket on the front panel of the main unit, and
- the headphones socket on the external device (for example, an MP3 player).

**2 Press AUDIO IN on the remote control or INPUT repeatedly on the main unit to switch the source to [AUDIO IN].**

**3 Play the external device.**

## USB 500 mA charge

The USB terminal on this unit has a 500 mA output. A USB device up to 500 mA can be connected and used/charged.

## Setting and deactivating the DEMO mode

You can set it to DEMO mode where the display scrolls the words. When the power is off (standby mode) press and hold

- . This will set the DEMO mode. To deactivate, press ■ again.

## Chapter 9:

## Additional information

## USB playability information

## Compatible USB devices:

- USB flash memory (USB1.1/2.0 (Full Speed))
- USB flash players (USB1.1/2.0 (Full Speed))
- Memory cards (an additional card reader is required)

## Supported formats:

- USB or memory file format FAT12, FAT16, FAT32 (sector size: 512 bytes)
- MP3 bitrates (data rates): 32 kbps to 320 kbps and variable bitrates
- WMA v9 or earlier
- Directory nesting up to 8 levels
- Number of albums/folders: maximum 99
- Number of tracks/files: maximum 999 (depending on file name length)
- ID3 tag v2.0 or later (Only English letters and numbers are supported.)
- File name in Unicode UTF8 (maximum length: 16 bytes)

Audio files cannot be played depending on the encoding software settings, USB device type, recording, other conditions.

## Unsupported formats:

- Empty albums: an album that does not contain MP3/WMA files
- Unsupported file formats are skipped. For example, Word documents (.doc) or MP3 files with extension.dlf are ignored and not played.
- AAC, WAV, PCM audio files
- DRM protected WMA files (.wav, .m4a, .m4p, .mp4, .aac)
- WMA files in Lossless format

## Supported MP3 disc formats

- ISO9660, Joliet
- Maximum track/file number: 999 (depending on file name length)
- Maximum album number: 99
- Supported sampling frequencies: 32 kHz, 44.1 kHz, 48 kHz
- Supported bitrates: 32 kbps to 320 kbps, variable bitrates

Audio files cannot be played depending on the encoding software settings, USB device type, recording, other conditions.

## RDS program types

NO TYPE	No RDS programme type
NEWS	News services
AFFAIRS	Politics and current affairs
INFO	Special information programs
SPORT	Sports
EDUCATE	Education and advanced training
DRAMA	Radio plays and literature
CULTURE	Culture, religion and society
SCIENCE	Science
VARIED	Entertainment programs
POP M	Pop music
ROCK M	Rock music
EASY M	Light music
LIGHT M	Light classical music
CLASSICS	Classical music
OTHER M	Special music programs
WEATHER	Weather
FINANCE	Finance
CHILDREN	Children's programs
SOCIAL	Social Affairs
RELIGION	Religion
PHONE IN	Phone In
TRAVEL	Travel
LEISURE	Leisure
JAZZ	Jazz Music
COUNTRY	Country Music
NATION M	National Music
OLDIES	Oldies Music
FOLK M	Folk Music
DOCUMENT	Documentary
TES	Alarm Test
ALARM	Alarm

## Troubleshooting

### WARNING

- Never remove the casing of this apparatus.

Incorrect operation is often mistaken for trouble or malfunction. If you think that there is something wrong with this component, check the points below. Sometimes the trouble may lie in another component. Inspect the other components and electrical appliances being used. If the trouble cannot be rectified even after checking the points below, ask your nearest Pioneer authorized service center or your dealer to carry out repair work.

- If the unit does not operate normally due to external effects such as static electricity, disconnect the power plug from the outlet and insert it again to return to normal operating conditions.

Problem	Solution
No power.	<p>Make sure that the AC power cord is connected properly.</p> <p>Make sure that there is power at the AC outlet.</p> <p>With a power-saving feature, the system switches off automatically 15 minutes after the system stays inactive.</p>
No sound or poor sound.	<p>Adjust the volume.</p> <p>Make sure that the speakers are connected correctly.</p>
No response from the system.	<p>Reconnect the AC power plug, and then turn on the system again.</p> <p>With a power-saving feature, the system switches off automatically 15 minutes after the system stays inactive.</p>
Remote control does not work.	<p>Reduce the distance between the remote control and the main unit.</p> <p>Insert battery with its polarity (+/- signs) aligned as indicated.</p> <p>Replace the batteries.</p> <p>Aim the remote control directly at the sensor on the front panel of the main unit.</p>
No disc is detected.	<p>Insert a disc.</p> <p>Make sure that you place the disc with its label facing upwards.</p> <p>Wait until the moisture condensation at the lens has cleared.</p> <p>Replace or clean the disc.</p> <p>Make sure that the recordable disc is finalized and the format is supported.</p>
USB storage device is not supported.	<p>Make sure that the USB storage device is compatible with the system.</p> <p>Is the USB storage device connected properly? Make sure that the device is firmly inserted.</p>
Cannot play some files on the USB storage device.	<p>Make sure that the file format is supported.</p> <p>Make sure that the file quantity does not exceed the maximum. (page 19)</p>
Radio reception is poor.	<p>Increase the distance between the system and other electrical appliances.</p> <p>Fully extend the antenna.</p>
Timer does not work.	<p>Set the clock correctly.</p> <p>Switch on the timer.</p>
Clock/timer setting is erased.	<p>Power has been interrupted or the AC power cord has been disconnected.</p> <p>Reset the clock/timer.</p>

## When the *Bluetooth* wireless technology device is connected or operated (X-EM22 only)

Problem	Solution
X-EM22 only The <i>Bluetooth</i> wireless technology device cannot be connected or operated. Sound from the <i>Bluetooth</i> wireless technology device is not emitted or the sound is interrupted.	Check that no object that emits electromagnetic waves in the 2.4 GHz band (microwave oven, wireless LAN device or <i>Bluetooth</i> wireless technology apparatus) is near the unit. If such an object is near the unit, set the unit far from it. Or, stop using the object emitting the electromagnetic waves.
	Check that the <i>Bluetooth</i> wireless technology device is not too far from the unit and that obstructions are not set between the <i>Bluetooth</i> wireless technology device and the unit. Set the <i>Bluetooth</i> wireless technology device and the unit so that the distance between them is less than about 10 m* and no obstructions exist between them.
	* The distance given is to be used as a rough guide. The actual allowable distance between devices may vary depending on conditions in the surrounding environment.
	The <i>Bluetooth</i> wireless technology device may not be set to the communication mode supporting the <i>Bluetooth</i> wireless technology. Check the setting of the <i>Bluetooth</i> wireless technology device.

## Cautions on use

### When moving this unit

When moving this unit, be sure to first check that there is no disc loaded. Then press **⏻** **STANDBY/ON**, wait until **[GOOD BYE]** disappears on main display to turn off, and then unplug the power cord. Damage may occur if the unit is transported or moved with a disc inserted, or when another device is connected to the USB terminal, or **AUDIO IN** mini-plug jack.

### Place of installation

- Choose a stable place near the TV or stereo system being used with this unit.
- Do not place this unit on top of a TV or color monitor. Also, install it away from cassette decks and other devices easily affected by magnetic forces.

### Avoid the following locations:

- Places exposed to direct sunlight
- Humid or poorly ventilated places
- Extremely hot places
- Places exposed to vibrations
- Places in which there is much dust or cigarette smoke
- Places exposed to soot, steam, or heat (kitchens, etc.)

### Do not place objects on this unit

Do not place any objects on top of this unit.

### Do not obstruct the ventilation holes.

Do not use this unit on shaggy rugs, beds, sofas, etc., or wrapped in cloth, etc. Doing so will prevent the heat from dispersing, leading to damage.

### Do not expose to heat.

Do not place this unit on top of an amplifier or other components that generate heat. When rack mounting it, to avoid the heat given off by the amplifier or other audio components, place it on a shelf below the amplifier.

- Turn off the power of this unit when not using it.
- Depending on signal conditions, striped patterns may appear on a TV screen and noise may enter the sound of radio broadcasts when the power of this unit is on. If this happens, turn off the power of this unit.

### **Cleaning the product**

- Unplug the power cord from the power outlet when cleaning this unit.
- Clean this unit using a soft cloth. For tough dirt, apply some neutral detergent diluted in 5 to 6 parts water to a soft cloth, wring out thoroughly, wipe off the dirt, and then wipe again with a soft, dry cloth.
- Alcohol, thinner, benzene, insecticides, etc., could cause the print or paint to peel off. Also, leaving rubber or vinyl products in contact with this unit for long periods of time could mar the cabinet.
- When using chemical-impregnated wipes, etc., read the cautions included with the wipes carefully.

### **Cleaning the lens**

- The lens of this unit should not become dirty in normal use, but if for some reason it should malfunction due to dust or dirt, consult your nearest Pioneer authorized service center. Although lens cleaners for players are commercially available, we advise against using them since some may damage the lens.

## **Handling discs**

### **Storing**

- Always place discs in their cases and store them vertically, avoiding hot, humid places, places exposed to direct sunlight and extremely cold places.
- Be sure to read the cautions included with the disc.

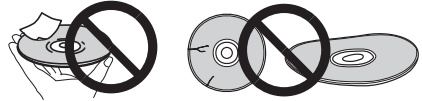
### **Cleaning discs**

- Discs may not play if there are fingerprints or dust on them. In this case, use a cleaning cloth, etc., to gently wipe the disc from the inside towards the outside. Do not use dirty cleaning cloths.



- Do not use benzene, thinner or other volatile chemicals. Also, do not use record spray or antistatic agents.
- For tough dirt, apply some water to a soft cloth, wring out thoroughly, wipe off the dirt, and then wipe off the moisture with a dry cloth.
- Do not use damaged (cracked or warped) discs.
- Do not let the signal surface of discs get scratched or dirty.

- Do not attach pieces of paper or stickers to discs. Doing so could warp discs, making it impossible to play them. Also, note that rental discs often have labels attached to them, and the glue of the label may have oozed out. Check that there is no glue around the edges of such labels before using rented discs.



### **About specially shaped discs**

Specially shaped discs (heart-shaped, hexagonal, etc.) cannot be played on this unit. Do not attempt to play such discs, as they could damage this unit.



## Specifications

- **Amplifier**

Rated Output Power . . . . 15 W + 15 W, RMS, 1 kHz, 6 Ω, 10 %

- **Disc**

Disc diameter . . . . . 12 cm, 8 cm  
 Support discs . . . . . CD-DA, CD-R, CD-RW, MP3-CD, WMA-CD  
 Frequency response . . . . . 60 Hz to 16 kHz (44.1 kHz)

- **Tuner (FM)**

Tuning range . . . . . 87.5 MHz to 108 MHz

- **Bluetooth (X-EM22 only)**

Version . . . . . Bluetooth Specification Ver. 4.0  
 Output . . . . . Bluetooth Specification Class 2  
 Estimated line-of-sight transmission distance\*  
 . . . . . About 10 m  
 Frequency range . . . . . 2.401 GHz to 2.480 GHz ISM Band  
 Modulation

. . . . . FH-SS (Frequency Hopping Spread Spectrum)  
 Supported Bluetooth profiles . . . . . A2DP, AVRCP  
 Supported Codec . . . . . SBC (Subband Codec)  
 Supported contents protection . . . . . SMSC-T

\* The line-of-sight transmission distance is an estimate.  
 Actual transmission distances supported may differ  
 depending on surrounding conditions.

- **Speakers**

Type . . . . . 1 way 1 speaker system  
 Speaker composition . . . . . 10 cm cone type  
 Speaker Impedance . . . . . 6 Ω

- **General information**

AC power . . . . . 220 V to 240 V, 50 Hz/60 Hz  
 Operation power consumption . . . . . 15 W  
 Standby power consumption . . . . . ≤ 0.5 W  
 USB Direct . . . . . USB 1.1/2.0 (Full Speed)  
 USB 5V Power . . . . . ≤ 500 mA

Dimensions  
 – Main unit (W x H x D) . . . . . 180 mm x 121 mm x 247 mm  
 – Speaker box (W x H x D) . . . . . 145 mm x 215 mm x 180 mm  
 Weight  
 – Main unit . . . . . 1.48 kg  
 – Speaker box . . . . . 1.36 kg x 2

- **Note**

- The specifications and design of this product are subject to change without notice.
- Corporation and product names mentioned herein are trademarks or registered trademarks of the respective corporations.

## Declaration of Conformity with regard to the R&TTE Directive 1999/5/EC

Manufacturer:

**PIONEER HOME ELECTRONICS CORPORATION**

1-1, Shin-ogura, Saiwai-ku,  
Kawasaki-shi, Kanagawa  
212-0031, Japan

EU Representative's:

**Pioneer Europe NV**

Haven 1087, Keetberglaan 1,  
9120 Melsele, Belgium  
<http://www.pioneer.eu>



[\*] X-EM22

### English:

Hereby, Pioneer, declares that this [\*] is in compliance with the essential requirements and other relevant provisions of Directive 1999/5/EC.

### Suomi:

Pioneer vakuuttaa täten että [\*] tyyppinen laite on direktiivin 1999/5/EY oleellisten vaatimusten ja sitä koskevien direktiivin muiden ehtojen mukainen.

### Nederlands:

Hierbij verklaart Pioneer dat het toestel [\*] in overeenstemming is met de essentiële eisen en de andere relevante bepalingen van richtlijn 1999/5/EG

### Français:

Par la présente Pioneer déclare que l'appareil [\*] est conforme aux exigences essentielles et aux autres dispositions pertinentes de la directive 1999/5/CE

### Svenska:

Härmed intygar Pioneer att denna [\*] står i överensstämmelse med de väsentliga egenskapskrav och övriga relevanta bestämmelser som framgår av direktiv 1999/5/EG.

### Dansk:

Undertegnede Pioneer erklærer herved, at følgende udstyr [\*] overholder de væsentlige krav og øvrige relevante krav i direktiv 1999/5/EF

### Deutsch:

Hiermit erklärt Pioneer, dass sich dieses [\*] in Übereinstimmung mit den grundlegenden Anforderungen und den anderen relevanten Vorschriften der Richtlinie 1999/5/EG befindet". (BMW)

### Ελληνικά:

ΜΕ ΤΗΝ ΠΑΡΟΥΣΑ Pioneer ΔΗΛΩΝΕΙ ΟΤΙ [\*] ΣΥΜΜΟΡΦΩΝΕΤΑΙ ΠΡΟΣ ΤΙΣ ΟΥΣΙΩΔΕΙΣ ΑΠΑΙΤΗΣΕΙΣ ΚΑΙ ΤΙΣ ΛΟΙΠΕΣ ΣΧΕΤΙΚΕΣ ΔΙΑΤΑΞΕΙΣ ΤΗΣ ΟΔΗΓΙΑΣ 1999/5/ΕΚ

### Italiano:

Con la presente Pioneer dichiara che questo [\*] è conforme ai requisiti essenziali ed alle altre disposizioni pertinenti stabilite dalla direttiva 1999/5/CE.

### Español:

Por medio de la presente Pioneer declara que el [\*] cumple con los requisitos esenciales y cualesquiera otras disposiciones aplicables o exigibles de la Directiva 1999/5/CE



### **Português:**

Pioneer declara que este [\*] está conforme com os requisitos essenciais e outras disposições da Directiva 1999/5/CE.

### **Čeština:**

Pioneer tímto prohlašuje, že tento [\*] je ve shodě se základními požadavky a dalšími příslušnými ustanoveními směrnice 1999/5/ES

### **Eesti:**

Käesolevaga kinnitab Pioneer seadme [\*] vastavust direktiivi 1999/5/EÜ põhinõuetele ja nimetatud direktiivist tulenevatele teistele asjakohastele sätetele.

### **Magyar:**

Alulírott, Pioneer nyilatkozom, hogy a [\*] megfelel a vonatkozó alapvető követelményeknek és az 1999/5/EC irányelv egyéb előírásainak.

### **Latviešu valoda:**

Ar šo Pioneer deklarē, ka [\*] atbilst Direktīvas 1999/5/EK būtiskajām prasībām un citiem ar to saistītajiem noteikumiem.

### **Lietuvių kalba:**

Šiuo Pioneer deklaruoja, kad šis [\*] atitinka esminius reikalavimus ir kitas 1999/5/EB Direktyvos nuostatas.

### **Malti:**

Hawnhekk, Pioneer jiddikjara li dan [\*] jikkonforma mal-ħtiġijiet essenzjali u ma provvedimenti oħrajn relevanti li hemm fid-Direttiva 1999/5/EC

### **Slovenčina:**

Pioneer týmto vyhlasuje, že [\*] spĺňa základné požiadavky a všetky príslušné ustanovenia Smernice 1999/5/ES.

### **Slovenščina:**

Pioneer izjavlja, da je ta [\*] v skladu z bistvenimi zahtevami in ostalimi relevantnimi določili direktive 1999/5/ES.

### **Română:**

Prin prezenta, Pioneer declara ca acest [\*] este in conformitate cu cerintele esentiale si alte prevederi ale Directivei 1999/5/EU.

### **български:**

С настоящето, Pioneer декларира, че този [\*] отговаря на основните изисквания и други съответни постановления на Директива 1999/5/EC.

### **Polski:**

Niniejszym Pioneer oświadcza, że [\*] jest zgodny z zasadniczymi wymogami oraz pozostałymi stosownymi postanowieniami Dyrektywy 1999/5/EC

### **Norsk:**

Pioneer erklærer herved at utstyret [\*] er i samsvar med de grunnleggende krav og øvrige relevante krav i direktiv 1999/5/EF.

### **Íslenska:**

Hér með lýsir Pioneer yfir því að [\*] er í samræmi við grunnkröfur og aðrar kröfur, sem gerðar eru í tilskipun 1999/5/EC

### **Hrvatski:**

Ovime tvrtka Pioneer izjavlja da je ovaj [\*] u skladu osnovnim zahtjevima i ostalim odredbama Direktive 1999/5/EC.





<http://www.pioneer.co.uk>  
<http://www.pioneer.eu>

© 2014 PIONEER HOME ELECTRONICS CORPORATION.  
All rights reserved.

---

**PIONEER HOME ELECTRONICS CORPORATION**

1-1, Shin-ogura, Saiwai-ku, Kawasaki-shi, Kanagawa 212-0031, Japan

**PIONEER ELECTRONICS (USA) INC.**

P.O. BOX 1540, Long Beach, California 90801-1540, U.S.A. TEL: (800) 421-1404

**PIONEER ELECTRONICS OF CANADA, INC.**

340 Ferrier Street, Unit 2, Markham, Ontario L3R 2Z5, Canada TEL: 1-877-283-5901, 905-479-4411

**PIONEER EUROPE NV**

Haven 1087, Keetberglaan 1, B-9120 Melsele, Belgium TEL: 03/570.05.11

**PIONEER ELECTRONICS ASIACENTRE PTE. LTD.**

253 Alexandra Road, #04-01, Singapore 159936 TEL: 65-6472-7555

**PIONEER ELECTRONICS AUSTRALIA PTY. LTD.**

5 Arco Lane, Heatherton, Victoria, 3202, Australia, TEL: (03) 9586-6300

**PIONEER ELECTRONICS DE MEXICO S.A. DE C.V.**

Bldv.Manuel Avila Camacho 138 10 piso Col.Lomas de Chapultepec, Mexico, D.F. 11000 TEL: 55-9178-4270

K002\_B3\_En