

# AKAI

LED TV with built-in DVD player

ALED2202



User manual

Gebruiksaanwijzing

Manuel de l'utilisateur

Manual de instrucciones

Gebrauchsanleitung

Οδηγίες χρήσεως

Brugsanvisning

GB 2

NL 25

FR 49

ES 73

DE 97

EL 122

DA 146

## Table of contents

<b>1.</b>	<b>Safety</b> .....	<b>3</b>
1.1	Intended use .....	3
1.2	Labels in this manual .....	3
1.3	General safety instructions .....	3
<b>2.</b>	<b>Preparations for use</b> .....	<b>4</b>
2.1	Unpacking .....	4
2.2	Package contents .....	5
<b>3.</b>	<b>Installation</b> .....	<b>5</b>
3.1	Mounting the stand .....	6
3.2	Connecting random equipment .....	7
3.3	Connecting to the mains .....	8
3.4	Remote control .....	8
<b>4.</b>	<b>Functions</b> .....	<b>9</b>
4.1	LED TV/DVD Combi .....	9
4.2	Remote control .....	10
<b>5.</b>	<b>Operation</b> .....	<b>13</b>
5.1	Quick start .....	13
5.2	TV setup menu operation .....	14
5.3	TV functions .....	16
5.4	DVD/CD functions .....	16
5.5	DVD setup menu operation .....	19
<b>6.</b>	<b>Cleaning and maintenance</b> .....	<b>20</b>
6.1	Handle and care of a disc .....	20
<b>7.</b>	<b>Troubleshooting</b> .....	<b>21</b>
<b>8.</b>	<b>Technical data</b> .....	<b>23</b>
<b>9.</b>	<b>Disposal of used electrical and electronic equipment</b> .....	<b>24</b>

## Copyright notice

Design and specifications are subject to change without notice.

# 1. Safety

## 1.1 Intended use

The LED TV/DVD Combi plays film and photos from DVD. The appliance also plays music from CD. The appliance can also be used as a TV and as a monitor for a personal computer. Read the manual carefully before first use.



DVDs and DVD appliances are manufactured under the worldwide agreed DVD regional code system that the appliance will operate only with corresponding disc of the same regional code. If the code number on the label of a DVD does not match that on the label alongside, the DVD will not play on this appliance.



The appliance has built-in copyright protection technology that prevents copying from a disc to any media. If a video recorder is connected to the appliance, the video output image will be distorted during recording.

## 1.2 Labels in this manual



### WARNING

A warning means that injury or death is possible if the instructions are not obeyed.



### CAUTION

A caution means that damage to the equipment is possible.



A note gives additional information, e.g. for a procedure.

## 1.3 General safety instructions



### WARNING

Do not put force on the appliance. The appliance can fall and can cause serious injury.

**CAUTION**

Do not spill any liquid on the appliance.

**WARNING**

Do not insert any objects in the ventilation holes.

**CAUTION**

Do not block the ventilation holes.



This appliance is double insulated; therefore no earth wire is required. Always check that the mains voltage corresponds to the voltage on the rating plate. Never attempt to replace the adaptor plug with a regular mains plug.



This appliance employs a laser system. To prevent direct exposure to the laser beam, do not open the appliance. Visible laser radiation when open and interlock defeated.

## 2. Preparations for use

### 2.1 Unpacking

- Unpack the appliance carefully.
- Check the package contents as described below. If any item is missing, please contact your reseller.
- Remove the labels from the front panel carefully if present.



We recommend that you retain the original carton and packing materials in case it ever becomes necessary to return your product for service. This is the only way to safely protect the product against damage in transit. If you do dispose of the carton and the packing materials, please remember to recycle with due care to the environment.

## 2.2 Package contents

The following items are included in the received package:

- 1 LED TV/DVD Combi
- 1 Foot
- 1 Mains cable
- 1 Remote control
- 2 Batteries (AA)
- 1 Operator manual

## 3. Installation

- Place the appliance on the stand. Read the paragraph "Mounting the stand".
- Connect the random equipment to the appliance.  
Read the paragraph "Connecting random equipment".
- Connect the appliance to the mains.  
Read the paragraph "Connecting to the mains".
- Install the batteries in the remote control.  
Read the paragraph "Remote control".



### CAUTION

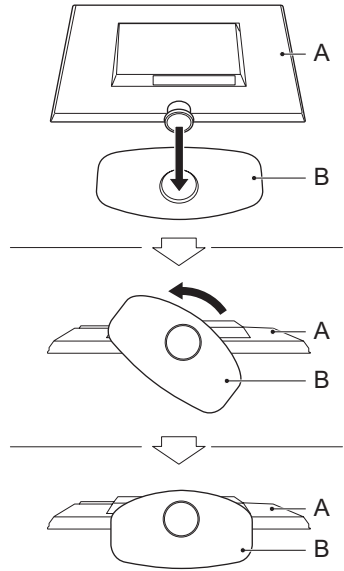
- Do not put the appliance near a heat source.
- Do not expose the appliance to direct sunlight.

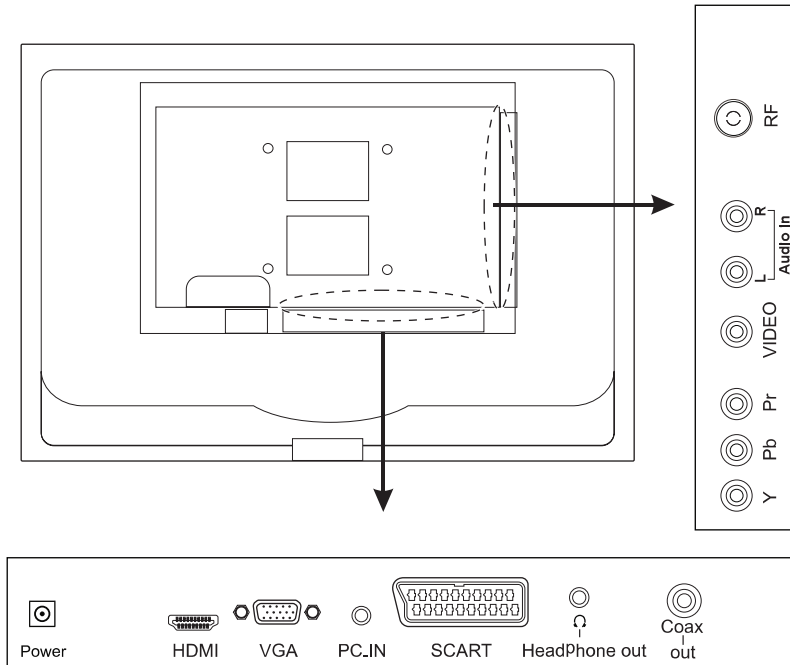


This appliance is equipped with rubber feet to prevent it from moving. The feet are made from non-migrating material specially formulated to avoid leaving any marks or stains on furniture. However, certain types of furniture polishes, wood preservatives or cleaning sprays cause the rubber to soften and leave marks or a residue on the furniture, and potentially risk the surface to become damaged. To prevent damage to wooden surfaces, we recommend that you apply self-adhesive pads to the bottom of the rubber feet before installation.

### 3.1 Mounting the stand

- Put the appliance on a horizontal flat surface, with the screen upside down.
- Insert the appliance (A) into the stand (B).
- Turn the stand (B) into the direction of the arrow until the stand clicks into place.
- Put the appliance straight up. Put the appliance on a horizontal flat surface.





## 3.2 Connecting random equipment

The appliance includes various options for permanent connection of random equipment. Suitable cables can be purchased at your reseller.

### Audio connections (input)

- L/R AUDIO: Connect a suitable cable to the L/R channels of the AUDIO connection.

### Video connections

The appliance has the following video outputs (in order of preference):

- HDMI: Connect a suitable cable into the HDMI connection.
- COMPONENT: Connect a suitable cable to the Y/Pb/Pr channels of the COMPONENT connection.
- SCART: Insert a suitable cable into the SCART connection.
- COMPOSITE: Insert a suitable cable into the VIDEO connection.

## PC connections

The appliance has the following inputs to connect to your personal computer.

- Audio connection: Connect a suitable cable into the PC IN connection.
- Video connection: Connect a suitable cable into the VGA connection.

## Cable connection

- Insert a suitable cable into the RF OUT connection.

## Headphone jack

- To connect a headphone, insert the cable plug in the headphone jack. To prevent hearing damage, remember to adjust the volume to a comfortable level.

## 3.3 Connecting to the mains

- Connect the female connector on the mains cable to the POWER connection.
- Connect the mains plug to a wall socket.

## 3.4 Remote control

### Install batteries

- Remove the battery cover.
- Insert the batteries matching the (+) and (-) polarity markings.
- Re-install the battery cover.



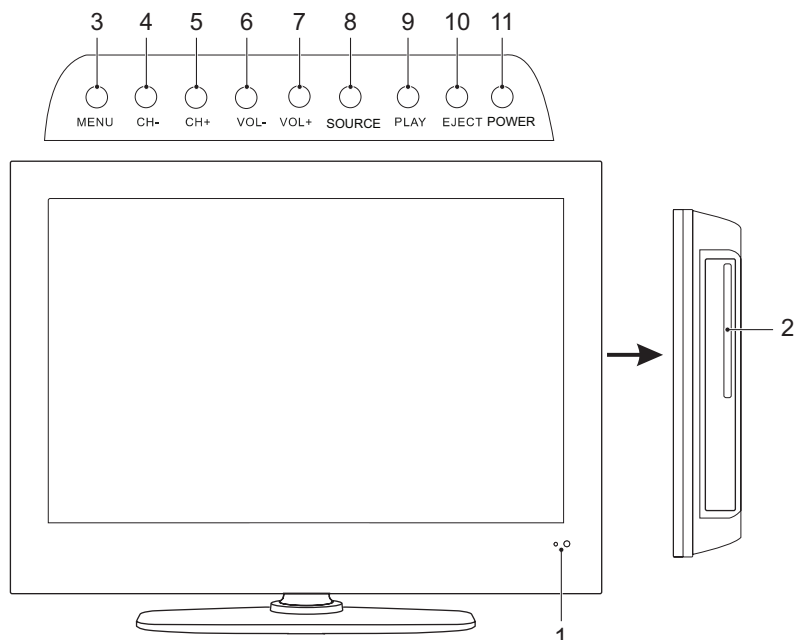
#### CAUTION

Incorrect installation can cause battery leakage and corrosion which will damage the appliance. Corrosion, oxidation, battery leakage and any other gradually acidic defect of this nature will invalidate the guarantee.



## 4. Functions

### 4.1 LED TV/DVD Combi



- 1 Remote control sensor / Standby indicator
- 2 DVD slot

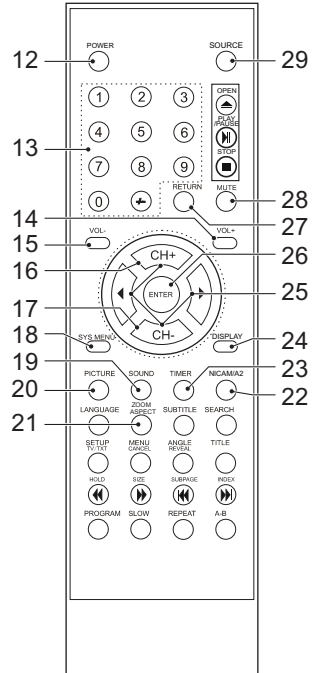
#### Top panel

- |                |                 |
|----------------|-----------------|
| 3 MENU button  | 8 SOURCE button |
| 4 CH - button  | 9 PLAY button   |
| 5 CH + button  | 10 EJECT button |
| 6 VOL - button | 11 POWER button |
| 7 VOL + button |                 |

## 4.2 Remote control

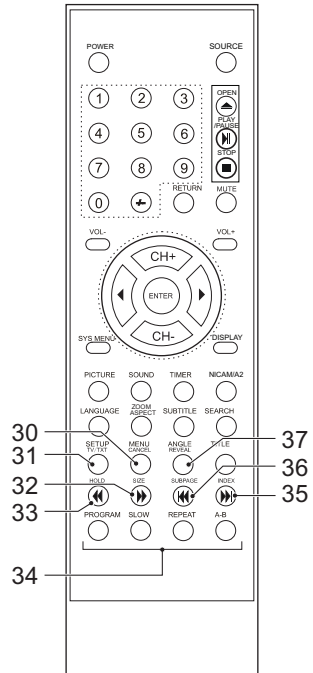
### General functions

- 12 POWER button
- 13 Digit buttons (0-10+)
- 14 VOL + button
- 15 VOL - button
- 16 CH + button
- 17 CH - button
- 18 SYS MENU button
- 19 SOUND button
- 20 PICTURE button
- 21 ASPECT button
- 22 NICAM/A2 button
- 24 DISPLAY button
- 25 Arrow buttons
- 26 ENTER button
- 27 RETURN button
- 28 MUTE button
- 29 SOURCE button



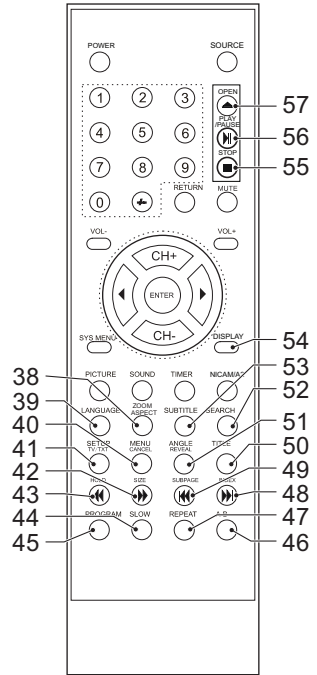
## Teletext functions

- 30 CANCEL button
- 31 TV/TXT button
- 32 SIZE button
- 33 HOLD button
- 34 Coloured buttons
- 35 INDEX button
- 36 SUBPAGE button
- 37 REVEAL button



## DVD functions

- 38 ZOOM button
- 39 LANGUAGE button
- 40 MENU button
- 41 SETUP button
- 42 FWD button
- 43 REW button
- 44 SLOW button
- 45 PROGRAM button
- 46 A-B button
- 47 REPEAT button
- 48 NEXT button
- 49 PREV button
- 50 TITLE button
- 51 ANGLE button
- 52 SEARCH button
- 53 SUBTITLE button
- 54 DISPLAY button
- 55 STOP button
- 56 PLAY/PAUSE button
- 57 OPEN button



## 5. Operation

All functions of the appliance are accessible using the remote control. All instructions refer to operation with the remote control, unless indicated otherwise.

### 5.1 Quick start

#### General functions

- To switch on the appliance, press the POWER button (12). To switch back to the standby mode, press the POWER button (12) again.
- To select the source mode (TV/AV/Y-Pb-Pr/DVD/SCART/VGA/HDMI), press the SOURCE button (29).
- To adjust the volume, press the VOL + button (14) or the VOL - button (15).
- To mute or restore sound, press the MUTE button (28).
- To set the sleep timer (OFF/15/30/45/60/90/120 min), press the TIMER button (23).
- To select the desired picture mode (USER/NORMAL/SOFT/VIVID), press the PICTURE button (20).
- To select the screen size (16:9, 4:3, ZOOM1, ZOOM2, AUTO), press the ASPECT button (21).
- To select the sound mode (USER/NORMAL/NEWS/MOVIE), press the SOUND button (19).
- To display the setting on the screen, press the DISPLAY button (24).

## DVD/CD functions

- Switch on the appliance.
- Select the DVD mode.
- Insert a disc in the slot (2) with the label backwards.
- To start playback, press the PLAY/PAUSE button (56) once.
- For extended instructions, read the paragraph "DVD/CD functions" further on in this manual.

## 5.2 TV setup menu operation

### To change the initial settings

The following actions must be carried out with the remote control:

- Press the SYS MENU button (18).
- Press the arrow buttons (up and down) (25) to select a menu.
- Press the arrow buttons (right) (25) to enter the selected menu.
- Press the arrow buttons (up and down) (25) to adjust the setting.
- Press the SYS MENU button (18) to store the setting and exit.

### Picture menu

- PICTURE MODE: to set the picture mode (USER/NORMAL/SOFT/VIVID).
- BRIGHTNESS: to adjust the screen brightness.
- CONTRAST: to adjust the screen contrast.
- SATURATION: to adjust the screen saturation.
- SHARPNESS: to adjust the screen sharpness.
- HUE: to adjust the screen hue (TOWARD PURPLE/TOWARD GREEN).  
This option is available for NTSC playback only.
- SCALE: to set the aspect ratio (16:9, 4:3, ZOOM1, ZOOM2, AUTO).



The picture menu can also be entered by pressing the PICTURE button (20).

### Sound menu

- SOUND MODE: to set the picture mode (USER/NORMAL/NEWS/MOVIE).
- VOLUME: to adjust the volume.

- BASS: to adjust the bass.
- TREBLE: to adjust the treble.
- BALANCE: to adjust the balance.



The sound menu can also be entered by pressing the SOUND button (19).

### Channel menu (TV mode only)

- AUTO TUNE: to tune for channels automatically.
- MANUAL TUNE: to tune for channels manually.
- FINE TUNE: to fine-tune weak channels.
- SKIP: to switch automatic skipping of weak channels ON or OFF.
- SOUND SYS: to select the sound system.
- PROGRAM EDIT: to edit the program.

### Function menu

- LANGUAGE: to select the language for the On Screen Display (OSD).
- BLUE BACK: to switch the blue background ON or OFF.
- TTX LANGUAGE: to select the area of the teletext language (WEST/EAST/RUSSIAN/ARABIC/FARSI).
- COLOR TEMP: to set the screen colour temperature (COOL/WARM/NORMAL).
- HOTEL LOCK: to switch the hotel setting menu ON or OFF (password: 0000):



Carefully keep the password to be able to restore the default settings at all times.

- HOTEL MODE: to switch the hotel mode ON or OFF.
- VOLUME CONTROL: to switch the volume control ON or OFF.
- TUNER CONTROL: to switch the tuner control ON or OFF.
- MAX VOLUME: to set the maximum volume.
- CHANGE PASSWORD: to change the password for the hotel mode.
- SOURCE LOCK: to select the source for prohibiting any external input.
- KEYPAD LOCK: to lock or unlock the TV buttons.
- PROG SET: to set the preset source (OFF/TV/AV/Y-Pb-Pr/SCART/VGA/HDMI).
- PROG NUM: to select the program number.
- RESET: to restore the default settings.

## PC menu (PC mode only)

- H-POSITION: to adjust the horizontal position of the screen.
- V-POSITION: to adjust the vertical position of the screen.
- CLOCK: to adjust the pixel clock frequency until the image size is maximised for the screen.
- PHASE: to adjust the phase of the ADC sampling clock relative to the sync signal until a stable image is obtained.
- AUTO ADJUST: to adjust the parameters of the screen automatically.

## 5.3 TV functions

### Teletext functions

- Press the TV/TXT button (31) to open the Teletext mode.
- To select a page, press in the number using the digit buttons.
- To select the next or previous page, press the CH + button (16) or the CH - button (17).
- To select the index page, press the INDEX button (35).
- To show hidden information, press the REVEAL button (37) (optional for some Teletext pages).
- To select the size of Teletext page:
  - Press the SIZE button (32) once to enlarge the upper half of the page.
  - Press the button once again to enlarge the lower half of the page.
  - Press the button once again to cancel the function.
- To hold a Teletext page, press the HOLD button (33).
- Press a coloured button (34) to select a quick link to a teletext page.

## 5.4 DVD/CD functions

After the disc has been loaded, a content menu will display on the TV screen.

- Press the arrow buttons (25) to select a menu item.
- Press the ENTER button (26) to enter the selected menu item.

During playback, the following functions are available:

- To select a chapter (DVD) or track (CD), press the digit buttons (13).
- To select the next or previous chapter (DVD) or track (CD), press the NEXT button (48) or the PREV button (49).
- To forward or rewind the DVD, press the FWD button (42) or the REW button (43). The available speeds are: 2x, 4x, 8x, 20x.



- To pause playback, press the PLAY/PAUSE button (56) once. To resume playback, press the PLAY/PAUSE button (56) again.
- To stop playback temporarily, press the STOP button (55) once. To stop playback permanently, press the STOP button (55) again or press the PLAY/PAUSE button (56).
- To playback in slow-motion, either forward or backward, press the SLOW button (44) repeatedly. The available speeds are: 1/2, 1/3, 1/4, 1/5, 1/6, 1/7.
- To repeat a chapter (DVD) or one or all tracks (CD):
  - Press the REPEAT button (47) once to repeat the current chapter or track.
  - Press the button once again to repeat the current title.
  - Press the button once again to repeat all chapters or tracks.
  - Press the button once again to cancel the function.
- To view a specific title of a DVD, press the TITLE button (50). Use the arrow buttons to select the title.
- To select the audio language of a DVD, press the LANGUAGE button (39) repeatedly until the desired language is set.
- To switch on the subtitles of a DVD, press the SUBTITLE button (53). Press the button again to switch off the subtitles.
- To select extra information of a DVD or CD (remaining time/passed playtime/track number/chapter number), press the DISPLAY button (54).
- To select the camera angle, press the ANGLE button (51).
- To return to the main menu, press the MENU button (40).



- A DVD that does not match the region code cannot be read by this appliance.

## Using the PROGRAM function

- Press the PROGRAM button (45) to enter the PROGRAM function.
- To play tracks from a CD:
  - Press the arrow button (right) (25) to highlight the title.
  - Press the arrow buttons (up and down) (25) to select the title.
- To play chapters from a DVD:
  - Press the arrow button (right) (25) to highlight the title.
  - Press the arrow buttons (up and down) (25) to select the title.
  - Press the arrow button (right) (25) to highlight the chapter.
  - Press the arrow buttons (up and down) (25) to select the chapter.

- To confirm the selection, press the ENTER button (26).
- Repeat the last 2 steps to add additional titles or chapters.
- Press the PLAY/PAUSE button (56) to start the program.

### **Using the A-B REPEAT function**

The A-B REPEAT function can be used to repeat a specific section of a DVD.

- Press the A-B button (46) once to select the starting point (A).
- Press the A-B button (46) again to select the ending point (B).  
The appliance plays the section repeatedly.
- Press the A-B button (46) again to cancel the function. The appliance will resume the normal playback.

### **Using the SEARCH function**

The SEARCH function can be used to select a specific starting point on a DVD or CD.

- Press the SEARCH button (52)(25).
- Press the arrow buttons to select an entry.

The possible entries for DVD are:

- Disc time
- Chapter
- Title
- Chapter time
- Title time

The possible entries for CD are:

- Track time
- Specific track
- Press the digit buttons to set a selection.

### **Using the MP3/MPEG4 playback function**

- Insert an MP3/MPEG4 disc. A content menu will display on the TV screen.
- Press the up/down arrow buttons (16/17) to select a folder or a file.
- Press the ENTER button (26) to enter the selected folder or file.
- Press the MENU button (40) to switch between folders and files. Press the ENTER button (26) to confirm.

## 5.5 DVD setup menu operation



This menu only works in DVD mode.

### To change the initial settings

The following actions must be carried out with the remote control:

- Press the SETUP button (41) to select the setup menu.
- Press the arrow buttons to select an item and change the settings.
- Press the SETUP button (41) to store the settings and exit.

### System setup page



This menu only works with an empty DVD player.

#### TV SYSTEM

- To select the colour system (NTSC/PAL/AUTO).

#### TV TYPE

- To select the aspect ratio (4:3PS/4:3LB/16:9).

#### PASSWORD

- To set the password.

#### RATING

- To set the parental rating password.

#### DEFAULT

- To restore the default settings of the appliance.

### Language setup page

- In the OSD LANGUAGE section, press the arrow buttons to choose the language.
- In the AUDIO section, choose the audio language.
- In the SUBTITLE section, choose the subtitle language.
- In the DVD MENU section, choose the language for the DVD menu.

## Audio setup page

### AUDIO OUT

- Select SPDIF OFF to switch off the digital audio signal output.
- Select SPDIF RAW to set the digital audio signal output to its raw format (DTS/Dolby Digital 5.1).
- Select SPDIF PCM to set the digital audio signal output to PCM format.

## Digital setup page

### DYNAMIC

- Select the value for the dynamic range compression to avoid losing sound details resulting from a low volume.

### DUAL MONO

- Stereo: both channels as is. STEREO is the default setting.
- L-Mono: left channel only.
- R-Mono: right channel only.
- Mix-Mono: the average of both the left and right channel.



This function is only available for Dolby AC-3 encoded 2-channel discs.

## 6. Cleaning and maintenance



### WARNING

Before performing any cleaning or maintenance, switch off and unplug the appliance.

- Clean the outside of the appliance with a soft cloth. When the appliance is very dirty, dampen the cloth slightly with water and a neutral solution.

### 6.1 Handle and care of a disc

- Hold the disc with fingers. Hold the disc outer edge and/or the centre spindle hole. Do not touch the disc surface.
- Do not bend or press the disc. Do not expose the disc to direct sunlight or heating sources.
- Clean the disc surface with a soft, dry cleaning cloth. Wipe the disc surface gently, radially, from centre towards the outer edge.

- Do not apply thinner, alcohol, chemical solvent, or sprays when cleaning. Such cleaning fluids will permanently damage the disc surface.

## 7. Troubleshooting

Trouble	Action
No sound or incomplete audio	<p>Check if the random equipment are switched on and set correctly.</p> <p>Check cables for connection problems.</p> <p>Check if the correct source is selected.</p> <p>Check volume or mute setting.</p>
No picture	<p>Check if the TV is switched on and set to the correct A/V input.</p> <p>Check cables for connection problems.</p>
No power	<p>Check if the power cord has been properly connected to the power outlet.</p>
Malfunction	<p>Should the appliance develop a serious malfunction, unplug the appliance for 30 minutes. After this, power on the appliance and restore to factory default.</p>

### DVD/CD

Trouble	Action
No playback	<p>There is no disc inserted. Load a disc in the appliance.</p> <p>Disc is loaded label facing backward. Place the disc with the label facing forward.</p> <p>Rating level of the disc is higher than the rating level setting of the appliance.</p> <p>Invalid region code.</p> <p>Incorrect type of disc.</p> <p>Disc may be damaged or dirty, clean the disc or try another disc.</p> <p>Moisture may have condensed inside the appliance. Remove the disc and leave the appliance powered on for one or two hours.</p>

No sound or incomplete audio	Select another audio track. During SCAN, SLOW MOTION or SINGLE STEP the sound is muted. Check if the disc is in fast forward or fast rewind mode. Press the PLAY/PAUSE button (56).
No scan or skip possible	Some discs are programmed to refuse user action at certain sections. This is no malfunction. Single chapter or track discs do not allow skip function.
Picture distorted or noisy	Disc may be damaged or dirty, clean the disc or try another disc. Check TV system setting (PAL/NTSC). A VCR is connected between the appliance and the random equipment. Connect the appliance to a A/V directly. Clean the disc.
Picture not full screen	Select the screen format from the appliances setup menu. Select screen format in disc start menu.

## Remote control (RC)

Trouble	Action
RC does not function	Check the battery installation. Point the RC at the remote control sensor. Stay within 8 metres of the appliance.

## 8. Technical data

Parameter	Value
Voltage	100 ~ 240 V <sub>AC</sub> / 50 ~ 60 Hz
Power consumption	60 W
Standby power consumption	<1 W
Max power output	2 x 3 W
Headphones output impedance	32 Ω
Dimensions (W x H x D)	
without foot	548 X 365 X 50 mm
with foot	548 X 395 X 160 mm
Weight	5 kg

### LED screen

Parameter	Value
Diagonal size	55 cm (22")
Ratio	16:9
Resolution	1920 x 1080 pixels
Brightness	250 cd/m <sup>2</sup>
Contrast ratio	1000:1
Response time	5 ms
Viewing angle horizontally / vertically	170°/160°
Television system	PAL/SECAM

### Set-up

Parameter	Value
Wall mountable	VESA standard (100 x 100 mm)

### Remote control

Parameter	Value
Power consumption	2 x 1.5 V
Battery size	AA

## 9. Disposal of used electrical and electronic equipment




The meaning of the symbol on the material, its accessory or packaging indicates that this product shall not be treated as household waste. Please, dispose of this equipment at your applicable collection point for the recycling of electrical and electronic equipments waste. In the European Union and Other European countries which there are separate collection systems for used electrical and electronic product. By ensuring the correct disposal of this product, you will help prevent potentially hazardous to the environment and to human health, which could otherwise be caused by unsuitable waste handling of this product. The recycling of materials will help conserve natural resources. Please do not therefore dispose of your old electrical and electronic equipment with your household waste.

For more detailed information about recycling of this product, please contact your local city office, your household waste disposal service or the shop where you purchased the product.

For more information and warranty conditions, please visit: [www.akai.eu](http://www.akai.eu)





Heeft u na het lezen van deze handleiding nog vragen?  
Neemt u dan contact op met AKAI Benelux via:

**0900-3555333**

Avez-vous des questions après avoir lu ce manuel?  
Contactez AKAI Benelux par téléphone au :

**070-355505**

**[www.akai.eu](http://www.akai.eu)**