

lenovo

Lenovo TAB A10-70

Quick Start Guide v1.0

- Read this guide carefully before using your tablet.
All information labeled with * in this guide refers only to the WLAN + 3G model (Lenovo A7600-H).

Technical specifications



Model and system

Model: Lenovo A7600-F

*Lenovo A7600-H

Version: WLAN

*WLAN + 3G

System: Android 4.2



Size and weight

Height: 264.1 mm

Width: 176.54 mm

Depth: 8.9 mm

Weight: 561 g

*563 g



CPU

CPU: MT8121 Quad Core 1.3GHz

*MT8382 Quad Core 1.3GHz



Camera

Type: CMOS

Pixels: 5 MP (back) + 2 MP (front)



Power and battery

Battery: 6340 mAh



Display

Size: 10.1 inches (diagonal)

Screen: Multi-touch display

Resolution: 1280 × 800

LCD type: IPS



Wireless communication

^②Bluetooth 4.0

WLAN 802.11b/g/n

*WCDMA, GSM



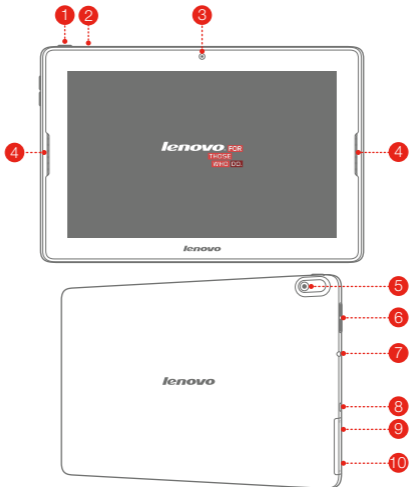
GPS



① Actual product may differ.

② Launch with Android 4.2 which only supports BT 4.0 PXP profile.

First glance

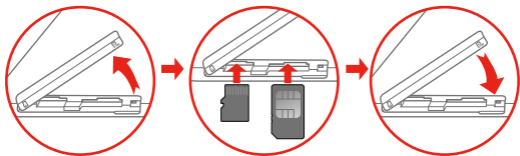
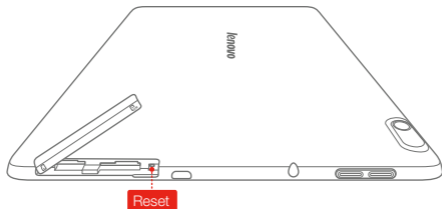


- | | | |
|----------------------|------------------|------------------|
| 1 On/Off button | 2 Microphone | 3 Front camera |
| 4 Speakers | 5 Back camera | 6 Volume key |
| 7 Earphone jack | 8 Micro USB port | 9 *SIM card slot |
| 10 microSD card slot | | |

 The WLAN model (Lenovo A7600-F) does not have a SIM card slot.

Installing the *SIM card & microSD card

You can use cellular services with the WLAN + 3G model (Lenovo A7600-H) by inserting the SIM card provided by your carrier services. Install the SIM card as shown.



Step 1. Open the card slot cover as shown.

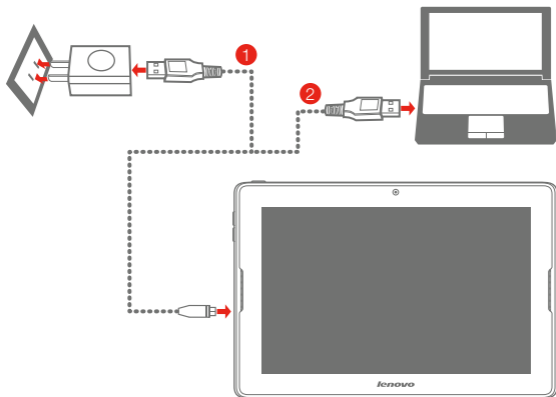
Step 2. Insert the SIM card into the SIM card slot and the microSD card into the microSD card slot.

Step 3. Carefully replace the card slot cover.

ⓘ Do not insert or remove the SIM card while your tablet is turned on. Doing so may permanently damage your SIM card or tablet.


Charging and turning on/off your tablet

Before using your tablet, you might need to charge the battery. Charge the battery as shown.




Method 1. Connect your tablet to a power outlet using the included cable and USB power adapter.

Method 2. Charge the battery using a computer.

 Low battery

 Fully charged

 Charging

 Your device has a built-in rechargeable battery. For more information about battery safety, see “Built-in rechargeable battery notice” in the **Important Product Information Guide**.

Learn more

For other useful manuals, please access “User Guide” from the Browser favorites in your tablet.

For “Regulatory Notices”, please go to <http://support.lenovo.com/>.

Getting support

For support on network service and billing, please contact your wireless network operator. For instructions on how to use your tablet, go to

<http://support.lenovo.com/>.

European Union conformity



Radio and Telecommunications Terminal Equipment Directive

This product is in compliance with the essential requirements and other relevant provisions of the Radio and Telecommunications Terminal Equipment Directive, 1999/5/EC.

Legal notices

Lenovo and the Lenovo logo are trademarks of Lenovo in the United States, other countries, or both.

Other company, product, or service names may be trademarks or service marks of others.

Manufactured under license from Dolby Laboratories. Dolby and the double-D symbol are trademarks of Dolby Laboratories.

First Edition (February 2014) © Copyright Lenovo 2014.

Reduce | Reuse | Recycle



8306LVP912W
Printed in China